

## JCI Range Today 7,099 – 7,115(Support), 7,194 – 7,201 (Resistance)

Jakarta Stock Exchange Composite Index, Indonesia, Jakarta:JKSE, D

EMA (20, close, 0)  
EMA (10, close, 0)  
EMA (5, close, 0)



**Jakarta Composite Index**, JCI closed higher and pullback to area 7,162. The indicator stochastic is bearish, MACD histogram is moving in a negative (line is bearish) and volume is increasing. Bearish scenario: If it moves bearish again, JCI is expected to weaken again to the support range of 7,099 – 7,115. Bullish scenario: If JCI is able to move bullish, JCI has a chance to reach resistance 7,194 – 7,201.

**Stock Pick Today: AMRT, BRIS, CTRA, MEDC**

## AMRT

Sumber Alfaria Trijaya Tbk, Indonesia, Jakarta:AMRT, D

EMA (13, close, 0)  
EMA (34, close, 0)



**(AMRT).** Price closed higher with swing low. Price has opportunity to continue to the nearest resistance. Stochastic is golden cross potential, MACD histogram is moving positive (line is golden cross) and volume is increasing. Confirm buy if the next candle returns bullish or buy on support if it goes down first. Be careful if you fail to stay above the support level or become a support breakdown. **(Trading Buy)**

### TRADING STRATEGY:

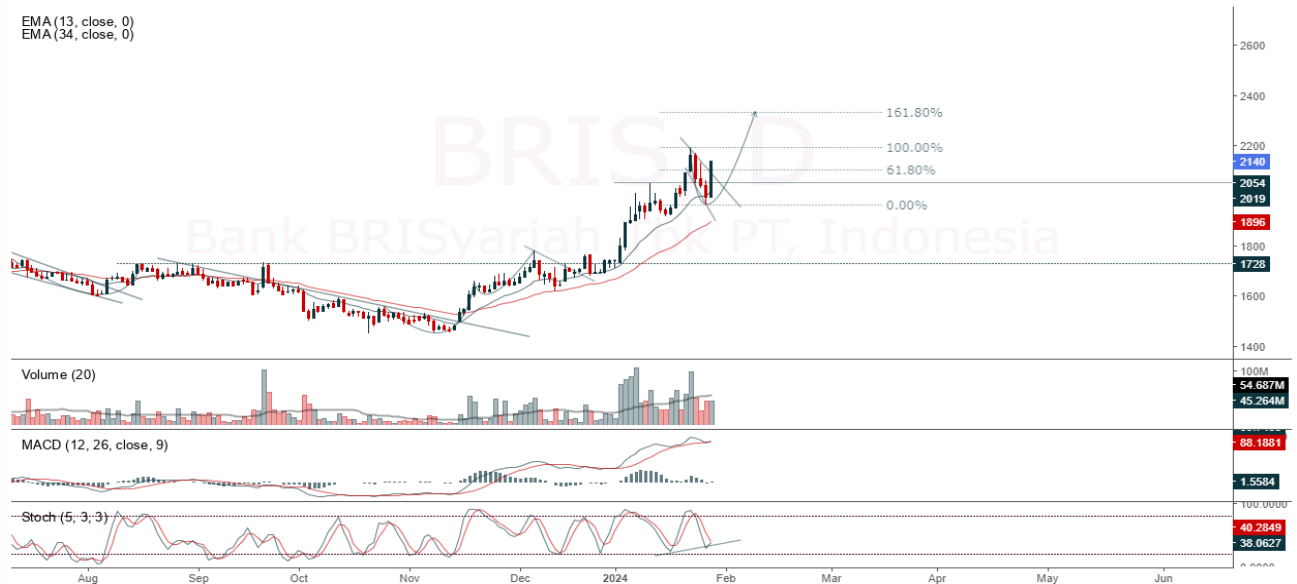
1. Target Price: The price has a bullish opportunity to test the resistance level 2,730. If it breaks level 2,730 then the price will go to level 2,770. We recommend to be careful if the price fails to break through or turn around the support area.
2. Stop Loss: To minimize the risk of loss, we recommend placing a stop loss at level 2,620.

Entry Buy : 2,640 – 2,690  
Target Price : 2,730 – 2,770  
Support : 2,630 – 2,640  
Cut loss : 2,620

**BRIS**

Bank BRISyariah Tbk PT, Indonesia, Jakarta:BRIS, D

EMA (13, close, 0)  
EMA (34, close, 0)



**(BRIS).** Price closed higher and back to rally after correction. Price has the opportunity strengthen to the next resistance. Stochastic is golden cross potential, MACD histogram is moving positive (line is bullish) and volume is increasing. Confirm buy if the next candle returns bullish or buy on support if it goes down first. Be careful if you fail to stay above the support level or become a support breakdown.  
**(Trading Buy)**

**TRADING STRATEGY:**

- 1.Target Price: The price has a bullish opportunity to test the resistance level 2,190. If it breaks level 2,190 then the price will go to level 2,240. We recommend to be careful if the price fails to break through or turn around the support area.
2. Stop Loss: To minimize the risk of loss, we recommend placing a stop loss at level 2,060.

Entry Buy : 2,090 – 2,140  
Target Price : 2,190 – 2,240  
Support : 2,070 – 2,090  
Cut loss : 2,060

## CTRA

Ciputra Development Tbk, Indonesia, Jakarta:CTRA, D

EMA (13, close, 0)  
EMA (34, close, 0)



**(CTRA).** Price closed higher with bullish candle. Price has the opportunity strengthen to the nearest resistance. Stochastic is bullish, MACD histogram is positive direction (line is bearish) and volume is neutral. Confirm buy if the next candle returns bullish or buy on support if it goes down first. Be careful if you fail to stay above the support level or become a support breakdown. **(Trading Buy)**

### TRADING STRATEGY:

1. Target Price: The price has a bullish opportunity to test the resistance level 1,270. If it breaks level 1,270 then the price will go to level 1,290. We recommend to be careful if the price fails to break through or turn around the support area.

2. Stop Loss: To minimize the risk of loss, we recommend placing a stop loss at level 1,215.

Entry Buy : 1,230 – 1,250  
Target Price : 1,270 – 1,290  
Support : 1,220 – 1,230  
Cut loss : 1,215

**MEDC**

Medco Energi Internasional Tbk, Indonesia, Jakarta: MEDC, D

EMA (13, close, 0)  
EMA (34, close, 0)



**(MEDC).** Price closed higher and breakout trendline resistance. Price has the opportunity strengthen to the next resistance. Stochastic is bullish, MACD histogram is positive direction (line is golden cross potential) and volume is increasing. Confirm buy if the next candle returns bullish or buy on support if it goes down first. Be careful if you fail to stay above the support level or become a support breakdown.  
**(Trading Buy)**

**TRADING STRATEGY:**

1. **Target Price:** The price has a bullish opportunity to test the resistance level 1,275. If it breaks level 1,275 then the price will go to level 1,295. We recommend to be careful if the price fails to break through or turn around the support area.

2. **Stop Loss:** To minimize the risk of loss, we recommend placing a stop loss at level 3,900.

- Entry Buy : 1,220 – 1,245
- Target Price : 1,275 – 1,295
- Support : 1,210 – 1,220
- Cut loss : 1,205

## Forecast – Technical Analysis

Ticker	MA5	RSI Rec	MACD Trend	Recomm.	Pivot Point	Support		Resistance		Stop Loss Level
						1	2	1	2	
JCI	Positive	Trading	Negative	Hold	7,150	7,125	7,075	7,175	7,200	6,975
ACES	Negative	Overbought	Positive	Sell	825	820	805	840	845	795
ADRO	Positive	Trading	Negative	Hold	2,390	2,370	2,350	2,410	2,430	2,315
AKRA	Negative	Strong Sell	Positive	Sell	1,660	1,630	1,595	1,695	1,725	1,570
AMRT	Positive	Oversold	Negative	Spec. Buy	2,660	2,630	2,590	2,700	2,730	2,550
ANTM	Positive	Trading	Negative	Hold	1,570	1,550	1,525	1,595	1,615	1,505
ARTO	Positive	Trading	Negative	Hold	3,270	3,090	2,910	3,450	3,630	2,865
ASII	Positive	Oversold	Negative	Spec. Buy	5,000	4,920	4,835	5,075	5,175	4,760
BBCA	Positive	Trading	Negative	Hold	9,475	9,400	9,300	9,575	9,650	9,150
BBNI	Positive	Trading	Negative	Hold	5,525	5,450	5,400	5,575	5,650	5,300
BBRI	Positive	Oversold	Negative	Spec. Buy	5,500	5,400	5,325	5,575	5,675	5,225
BBTN	Positive	Trading	Negative	Hold	1,295	1,285	1,265	1,315	1,325	1,245
BMRI	Positive	Trading	Negative	Hold	6,400	6,325	6,200	6,525	6,600	6,100
BRIS	Positive	Trading	Negative	Hold	2,070	1,995	1,925	2,140	2,215	1,895
BRPT	Positive	Oversold	Negative	Spec. Buy	1,030	1,005	975	1,060	1,085	960
BUKA	Positive	Oversold	Negative	Spec. Buy	186	184	182	188	190	179
CPIN	Positive	Oversold	Negative	Spec. Buy	4,520	4,490	4,460	4,550	4,580	4,395
EMTK	Positive	Oversold	Negative	Spec. Buy	484	468	452	500	515	445
ESSA	Positive	Oversold	Negative	Spec. Buy	515	505	496	525	535	489
EXCL	Positive	Overbought	Positive	Hold	2,330	2,285	2,260	2,355	2,400	2,225
GGRM	Negative	Oversold	Negative	Specu. Buy	20,025	20,000	19,950	20,075	20,100	19,650
GOTO	Positive	Oversold	Negative	Spec. Buy	80	77	73	84	87	72
HRUM	Positive	Oversold	Negative	Spec. Buy	1,150	1,130	1,100	1,180	1,200	1,080
ICBP	Negative	Overbought	Positive	Sell	11,425	11,375	11,300	11,500	11,550	11,125
INCO	Positive	Oversold	Negative	Spec. Buy	3,920	3,835	3,750	4,005	4,090	3,690
INDF	Positive	Trading	Positive	Spec. Buy	6,425	6,400	6,375	6,450	6,475	6,275
INDY	Positive	Oversold	Negative	Spec. Buy	1,380	1,355	1,345	1,390	1,415	1,320
INKP	Positive	Trading	Negative	Hold	7,925	7,875	7,825	7,975	8,025	7,700
INTP	Negative	Trading	Positive	Hold	9,150	9,075	8,950	9,275	9,350	8,825
ITMG	Negative	Trading	Negative	Sell	26,775	26,675	26,550	26,900	27,000	26,150
KLBF	Negative	Oversold	Negative	Specu. Buy	1,515	1,495	1,450	1,560	1,580	1,430
MAPI	Positive	Trading	Negative	Hold	1,890	1,870	1,850	1,910	1,930	1,825
MDKA	Negative	Trading	Positive	Hold	2,750	2,700	2,650	2,800	2,850	2,610
MEDC	Negative	Trading	Negative	Sell	1,240	1,215	1,195	1,260	1,285	1,175
PGAS	Negative	Trading	Negative	Sell	1,130	1,125	1,110	1,145	1,150	1,095
PTBA	Negative	Trading	Negative	Sell	2,575	2,555	2,545	2,585	2,605	2,505
SCMA	Positive	Trading	Negative	Hold	155	153	151	157	159	148
SIDO	Positive	Oversold	Negative	Spec. Buy	505	497	491	510	515	484
SMGR	Negative	Trading	Negative	Sell	6,175	6,175	6,100	6,250	6,250	6,025
SRTG	Positive	Oversold	Negative	Spec. Buy	1,540	1,520	1,500	1,560	1,580	1,475
TBIG	Positive	Trading	Negative	Hold	1,960	1,945	1,930	1,975	1,990	1,900
TLKM	Positive	Trading	Negative	Hold	4,000	3,985	3,960	4,025	4,040	3,900
TOWR	Positive	Oversold	Negative	Spec. Buy	910	905	890	925	930	875
TPIA	Negative	Overbought	Positive	Sell	5,500	5,275	5,150	5,625	5,850	5,050
UNTR	Positive	Trading	Negative	Hold	23,175	23,025	22,875	23,325	23,475	22,525
UNVR	Negative	Oversold	Negative	Specu. Buy	3,120	3,075	3,030	3,165	3,210	2,980

## OUR TEAM

**Sukarno Alatas**

Head of Equity Research

[sukarno@kiwoom.co.id](mailto:sukarno@kiwoom.co.id) | 021 5010 5800**Abdul Azis Setyo Wibowo**

Equity Research Analyst

[azis@kiwoom.co.id](mailto:azis@kiwoom.co.id) | 021 5010 5800**Miftahul Khaer**

Equity Research Analyst

[khaer.miftahul@kiwoom.co.id](mailto:khaer.miftahul@kiwoom.co.id) | 021 5010 5800**Vicky Rosalinda**

Equity Research Analyst

[vicky.rosalinda@kiwoom.co.id](mailto:vicky.rosalinda@kiwoom.co.id) | 021 5010 5800**Wahyu Saputra**

Research Associate

[wahyu.saputra@kiwoom.co.id](mailto:wahyu.saputra@kiwoom.co.id) | 021 5010 5800**OTHER DISCLOSURES**

All Kiwoom's research reports made available to clients are simultaneously available on our own website <http://www.kiwoom.co.id/>. Not all research content is redistributed, e-mailed or made available to third-party aggregators. For all research reports available on a particular stock, please contact your sales representative. Any data discrepancies in this report could be the result of different calculations and/or adjustments.

**DISCLAIMER** This report has been prepared and issued by PT Kiwoom Sekuritas Indonesia. Information has been obtained from sources believed to be reliable but Kiwoom Securities do not warrant its completeness or accuracy. Forward-looking information or statements in this report contain information that is based on forecast of future results, estimates of amounts not yet determinable, assumptions, and therefore involve known and unknown risks and uncertainties which may cause the actual results, performance or achievements of their subject matter to be materially different from current expectations.

To the fullest extent allowed by law, PT Kiwoom Sekuritas Indonesia shall not be liable for any direct, indirect or consequential losses, loss of profits, damages, costs or expenses incurred or suffered by any person or organization arising from reliance on or use of any information contained on this report. The information that we provide should not be construed in any manner whatsoever as, personalized advice.

No mention of a particular security in this report constitutes a recommendation to buy, sell or hold that or any security, or that any particular security, portfolio of securities, transaction or investment strategy is suitable for any specific person. This report is being supplied to you solely for your information and may not be reproduced by, further distributed to or published in whole or in part by, any other person.