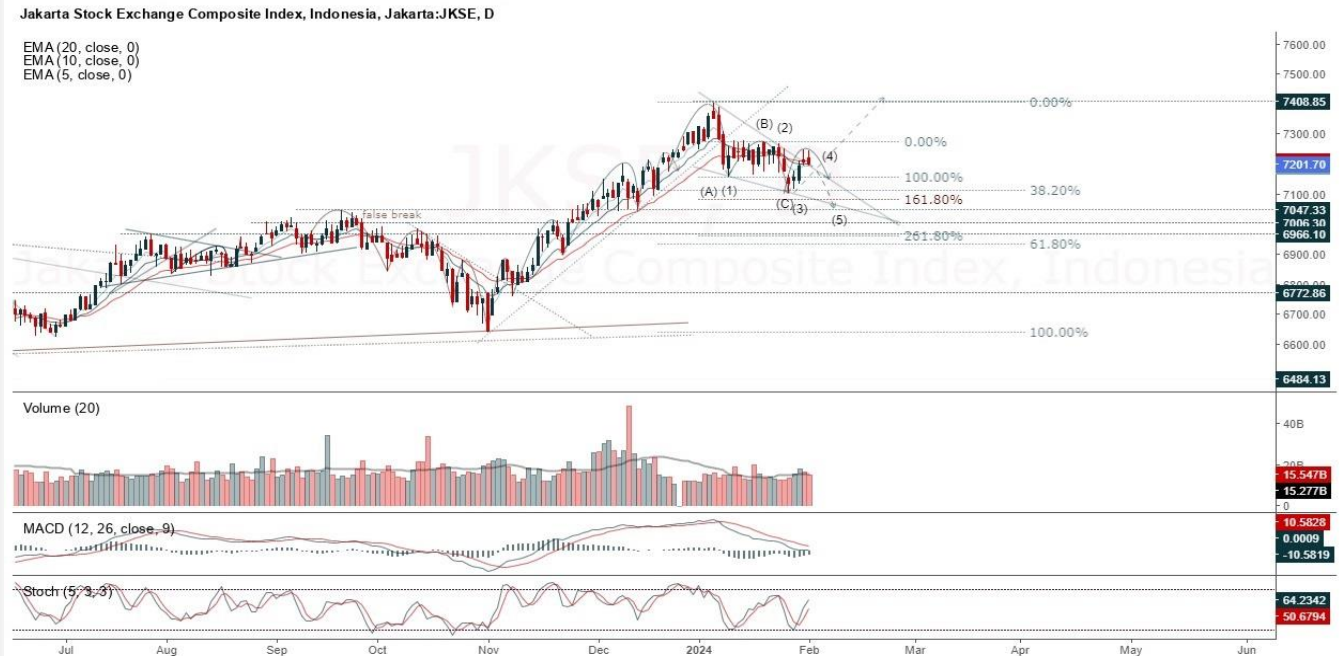


JCI Range Today 7,115 – 7,133 (Support), 7,247 – 7,253 (Resistance)



Jakarta Composite Index, JCI back closed negative with reversal candle. Indicator from stochastic is flat, MACD histogram is moving negative (line is bearish) and volume is decreasing. Bearish scenario: If it moves bearish again, JCI is expected to weaken again to the support range of 7,115 – 7,133. Bullish scenario: If JCI is able to move bullish, JCI has a chance to reach resistance 7,247 – 7,253.

Stock Pick Today: MBMA, SMGR, TLKM, TUGU

MBMA

Merdeka Battery Materials PT, Indonesia, Jakarta:MBMA, D

EMA (34, close, 0)
EMA (13, close, 0)



(MBMA). Price closed higher with back to swing low. Price has opportunity to continue to the nearest resistance. Stochastic is bullish, MACD histogram is moving negative (line is bullish) and volume trend is increasing. Confirm buy if the next candle returns bullish or buy on support if it goes down first. Be careful if you fail to stay above the support level or become a support breakdown. **(Trading Buy)**

TRADING STRATEGY:

1. Target Price: The price has a bullish opportunity to test the resistance level 715. If it breaks level 715 then the price will go to level 730. We recommend to be careful if the price fails to break through or turn around the support area.

2. Stop Loss: To minimize the risk of loss, we recommend placing a stop loss at level 650.

Entry Buy : 665 – 685
Target Price : 715 – 730
Support : 655 – 665
Cut loss : 650

SMGR

Semen Indonesia Persero Tbk, Indonesia, Jakarta:SMGR, D

EMA (13, close, 0)
EMA (34, close, 0)



(SMGR). Price closed higher with bullish candle. Price has the opportunity strengthen to the nearest resistance. Stochastic is still bullish, MACD histogram is moving positive (line is golden cross) and volume is increasing. Confirm buy if the next candle returns bullish or buy on support if it goes down first. Be careful if you fail to stay above the support level or become a support breakdown. **(Trading Buy)**

TRADING STRATEGY:

1. Target Price: The price has a bullish opportunity to test the resistance level 6,450. If it breaks level 6,450 then the price will go to level 6,550. We recommend to be careful if the price fails to break through or turn around the support area.

2. Stop Loss: To minimize the risk of loss, we recommend placing a stop loss at level 6,175.

Entry Buy : 6,225 – 6,325
Target Price : 6,450 – 6,550
Support : 6,200 – 6,225
Cut loss : 6,175

TLKM

Telkom Indonesia (Persero) Tbk PT, Indonesia, Jakarta:TLKM, D



(TLKM). Price closed higher and break consolidation area. Price has the opportunity strengthen to the next resistance. Stochastic is neutral, MACD histogram is moving positive direction (line is golden cross potential) and volume is increasing. Confirm buy if the next candle returns bullish or buy on support if it goes down first. Be careful if you fail to stay above the support level or become a support breakdown.

(Trading Buy)

TRADING STRATEGY:

1. Target Price: The price has a bullish opportunity to test the resistance level 4,100. If it breaks level 4,100 then the price will go to level 4,150. We recommend to be careful if the price fails to break through or turn around the support area.

2. Stop Loss: To minimize the risk of loss, we recommend placing a stop loss at level 3,970.

- Entry Buy : 4,000 – 4,040
- Target Price : 4,100 – 4,150
- Support : 3,980 – 4,000
- Cut loss : 3,970

TUGU

Asuransi Tugu Pratama Indonesia Tbk PT, Indonesia, Jakarta:TUGU, D

EMA (13, close, 0)
EMA (34, close, 0)



(TUGU). Price closed higher and breakup dynamic resistance. Price has the opportunity strengthen to the nearest resistance. Stochastic is bullish, MACD histogram is positive direction (line is golden cross potential) and volume is increasing. Confirm buy if the next candle returns bullish or buy on support if it goes down first. Be careful if you fail to stay above the support level or become a support breakdown.
(Trading Buy)

TRADING STRATEGY:

1. Target Price: The price has a bullish opportunity to test the resistance level 1,115. If it breaks level 1,115 then the price will go to level 1,130. We recommend to be careful if the price fails to break through or turn around the support area.

2. Stop Loss: To minimize the risk of loss, we recommend placing a stop loss at level 1,055.

Entry Buy : 1,070 – 1,090
Target Price : 1,115 – 1,130
Support : 1,060 – 1,070
Cut loss : 1,055

Forecast – Technical Analysis

Ticker	MA5	RSI Rec	MACD Trend	Recomm.	Pivot Point	Support		Resistance		Stop Loss Level
						1	2	1	2	
JCI	Negative	Trading	Negative	Sell	7,225	7,175	7,150	7,250	7,275	7,050
ACES	Negative	Overbought	Positive	Sell	850	840	820	870	880	810
ADRO	Negative	Trading	Negative	Sell	2,420	2,390	2,360	2,450	2,480	2,325
AKRA	Positive	Overbought	Negative	Sell	1,605	1,585	1,555	1,635	1,655	1,535
AMRT	Positive	Trading	Positive	Spec. Buy	2,655	2,635	2,625	2,665	2,685	2,585
ANTM	Negative	Oversold	Negative	Specu. Buy	1,550	1,525	1,515	1,560	1,585	1,490
ARTO	Positive	Trading	Negative	Hold	3,220	3,105	3,040	3,285	3,400	2,990
ASII	Negative	Oversold	Negative	Specu. Buy	5,125	5,075	5,025	5,175	5,225	4,945
BBCA	Negative	Trading	Negative	Sell	9,675	9,600	9,525	9,750	9,825	9,375
BBNI	Negative	Overbought	Positive	Sell	5,725	5,700	5,625	5,800	5,825	5,525
BBRI	Negative	Trading	Negative	Sell	5,775	5,725	5,700	5,800	5,850	5,600
BBTN	Negative	Trading	Negative	Sell	1,300	1,290	1,285	1,305	1,315	1,265
BMRI	Negative	Overbought	Negative	Strong Sell	6,575	6,500	6,450	6,625	6,700	6,350
BRIS	Negative	Overbought	Positive	Sell	2,325	2,250	2,195	2,380	2,455	2,160
BRPT	Positive	Trading	Negative	Hold	1,060	1,045	1,020	1,085	1,100	1,005
BUKA	Negative	Trading	Negative	Sell	190	186	185	191	195	182
CPIN	Positive	Oversold	Negative	Spec. Buy	4,460	4,410	4,360	4,510	4,560	4,295
EMTK	Positive	Oversold	Negative	Spec. Buy	480	462	444	498	515	437
ESSA	Positive	Oversold	Negative	Spec. Buy	505	489	479	515	530	471
EXCL	Positive	Trading	Negative	Hold	2,310	2,270	2,250	2,330	2,370	2,215
GGRM	Positive	Oversold	Negative	Spec. Buy	19,650	19,550	19,450	19,750	19,850	19,175
GOTO	Negative	Trading	Negative	Sell	91	89	88	92	94	86
HRUM	Positive	Oversold	Negative	Spec. Buy	1,185	1,160	1,140	1,205	1,230	1,120
ICBP	Negative	Overbought	Positive	Sell	11,600	11,400	11,200	11,800	12,000	11,025
INCO	Positive	Oversold	Negative	Spec. Buy	3,910	3,855	3,820	3,945	4,000	3,760
INDF	Positive	Trading	Negative	Hold	6,375	6,300	6,275	6,400	6,475	6,175
INDY	Positive	Oversold	Negative	Spec. Buy	1,370	1,355	1,330	1,395	1,410	1,310
INKP	Negative	Trading	Negative	Sell	7,725	7,675	7,575	7,825	7,875	7,475
INTP	Positive	Trading	Negative	Hold	8,975	8,925	8,850	9,050	9,100	8,725
ITMG	Negative	Trading	Negative	Sell	26,825	26,575	26,300	27,100	27,350	25,900
KLBF	Positive	Oversold	Negative	Spec. Buy	1,505	1,490	1,465	1,530	1,545	1,440
MAPI	Positive	Trading	Negative	Hold	1,960	1,935	1,910	1,985	2,010	1,880
MDKA	Positive	Trading	Positive	Spec. Buy	2,590	2,480	2,330	2,740	2,850	2,295
MEDC	Negative	Trading	Negative	Sell	1,190	1,175	1,160	1,205	1,220	1,145
PGAS	Negative	Trading	Positive	Hold	1,170	1,140	1,120	1,190	1,220	1,100
PTBA	Negative	Trading	Negative	Sell	2,585	2,560	2,535	2,610	2,635	2,495
SCMA	Positive	Trading	Negative	Hold	156	153	151	158	161	148
SIDO	Negative	Trading	Negative	Sell	505	505	496	515	515	489
SMGR	Negative	Trading	Positive	Hold	6,275	6,200	6,150	6,325	6,400	6,050
SRTG	Positive	Oversold	Negative	Spec. Buy	1,515	1,495	1,470	1,540	1,560	1,445
TBIG	Positive	Trading	Negative	Hold	1,945	1,930	1,900	1,975	1,990	1,875
TLKM	Negative	Trading	Negative	Sell	4,010	3,965	3,930	4,045	4,090	3,870
TOWR	Positive	Oversold	Negative	Spec. Buy	900	885	870	915	930	855
TPIA	Positive	Trading	Positive	Spec. Buy	5,400	5,175	4,965	5,600	5,825	4,890
UNTR	Positive	Trading	Negative	Hold	22,850	22,625	22,350	23,125	23,350	22,000
UNVR	Positive	Oversold	Negative	Spec. Buy	3,105	3,080	3,065	3,120	3,145	3,020

OUR TEAM

Sukarno Alatas

Head of Equity Research

sukarno@kiwoom.co.id | 021 5010 5800**Abdul Azis Setyo Wibowo**

Equity Research Analyst

azis@kiwoom.co.id | 021 5010 5800**Miftahul Khaer**

Equity Research Analyst

khaer.miftahul@kiwoom.co.id | 021 5010 5800**Vicky Rosalinda**

Equity Research Analyst

vicky.rosalinda@kiwoom.co.id | 021 5010 5800**Wahyu Saputra**

Research Associate

wahyu.saputra@kiwoom.co.id | 021 5010 5800**OTHER DISCLOSURES**

All Kiwoom's research reports made available to clients are simultaneously available on our own website <http://www.kiwoom.co.id/>. Not all research content is redistributed, e-mailed or made available to third-party aggregators. For all research reports available on a particular stock, please contact your sales representative. Any data discrepancies in this report could be the result of different calculations and/or adjustments.

DISCLAIMER This report has been prepared and issued by PT Kiwoom Sekuritas Indonesia. Information has been obtained from sources believed to be reliable but Kiwoom Securities do not warrant its completeness or accuracy. Forward-looking information or statements in this report contain information that is based on forecast of future results, estimates of amounts not yet determinable, assumptions, and therefore involve known and unknown risks and uncertainties which may cause the actual results, performance or achievements of their subject matter to be materially different from current expectations.

To the fullest extent allowed by law, PT Kiwoom Sekuritas Indonesia shall not be liable for any direct, indirect or consequential losses, loss of profits, damages, costs or expenses incurred or suffered by any person or organization arising from reliance on or use of any information contained on this report. The information that we provide should not be construed in any manner whatsoever as, personalized advice.

No mention of a particular security in this report constitutes a recommendation to buy, sell or hold that or any security, or that any particular security, portfolio of securities, transaction or investment strategy is suitable for any specific person. This report is being supplied to you solely for your information and may not be reproduced by, further distributed to or published in whole or in part by, any other person.