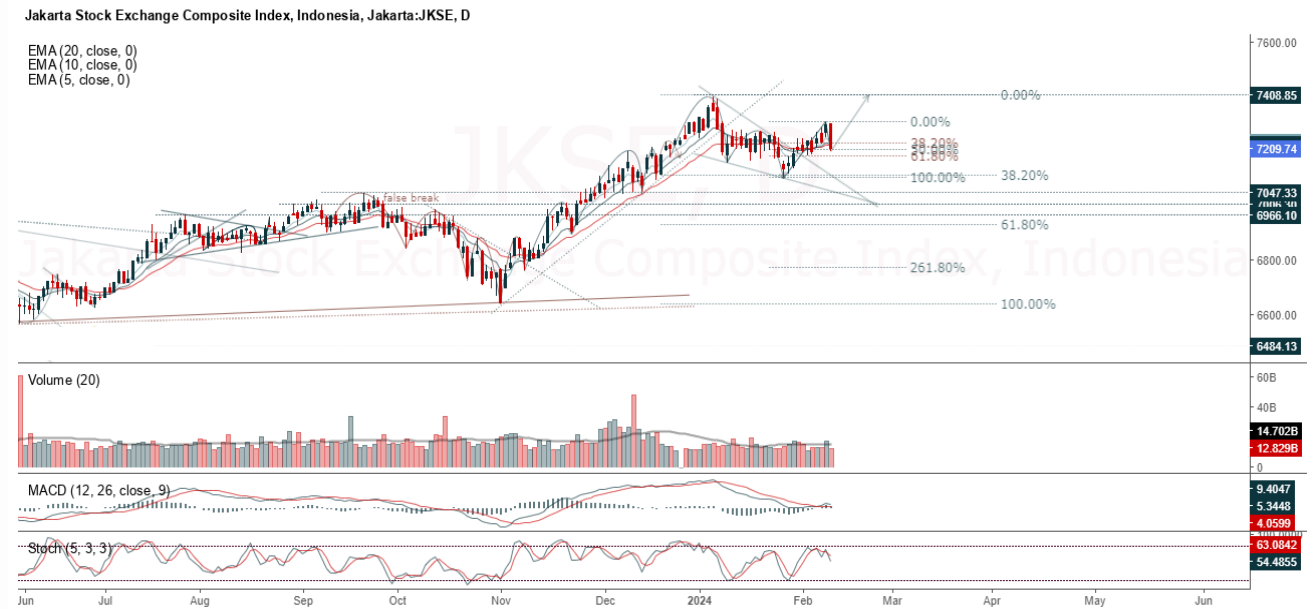


**JCI Range Today 7,152 – 7,191 (Support), 7,304 – 7,311 (Resistance)**



**Jakarta Composite Index**, JCI closed negative and move to dynamic support. Indicator from stochastic is bearish, MACD histogram is still positive (line is sloping) and volume is decreasing. Bearish scenario: If it moves bearish again, JCI is expected to weaken again to the support range of 7,152 – 7,191. Bullish scenario: If JCI is able to move bullish, JCI has a chance to reach resistance 7,304 – 7,311.

**Stock Pick Today: BUMI, NISP, PMMP, TUGU**

## BUMI

Bumi Resources Tbk, Indonesia, Jakarta:BUMI, D

EMA (13, close, 0)  
EMA (34, close, 0)



**(BUMI).** The price closed positive and breakup trendline resistance. Price have the opportunity to continue strengthening to the nearest resistance. Stochastic is golden cross, MACD histogram is moving positive (line is golden cross) and volume is increasing. Confirm buy if the next candle returns bullish or buy on support if it goes down first. Be careful if you fail to stay above the support level or become a support breakdown. **(Trading Buy)**

### TRADING STRATEGY:

1. Target Price: The price has a bullish opportunity to test the resistance level 93. If it breaks level 93 then the price will go to level 98. We recommend to be careful if the price fails to break through or turn around the support area.

2. Stop Loss: To minimize the risk of loss, we recommend placing a stop loss at level 84.

Entry Buy : 87 – 90  
Target Price : 93 – 98  
Support : 85 – 87  
Cut loss : 84

**NISP**

Bank Ocbc Nisp Tbk, Indonesia, Jakarta:NISP, D

EMA (13, close, 0)  
EMA (34, close, 0)



**(NISP).** Price closed negative and still uptrend. Price has the opportunity strengthen to the next resistance. Stochastic is still bullish, MACD histogram is moving positive (line is bullish) and volume is decreasing. Confirm buy if the next candle returns bullish or buy on support if it goes down first. Be careful if you fail to stay above the support level or become a support breakdown. **(Trading Buy)**

**TRADING STRATEGY:**

1.Target Price: The price has a bullish opportunity to test the resistance level 1,295. If it breaks level 1,295 then the price will go to level 1,320. We recommend to be careful if the price fails to break through or turn around the support area.

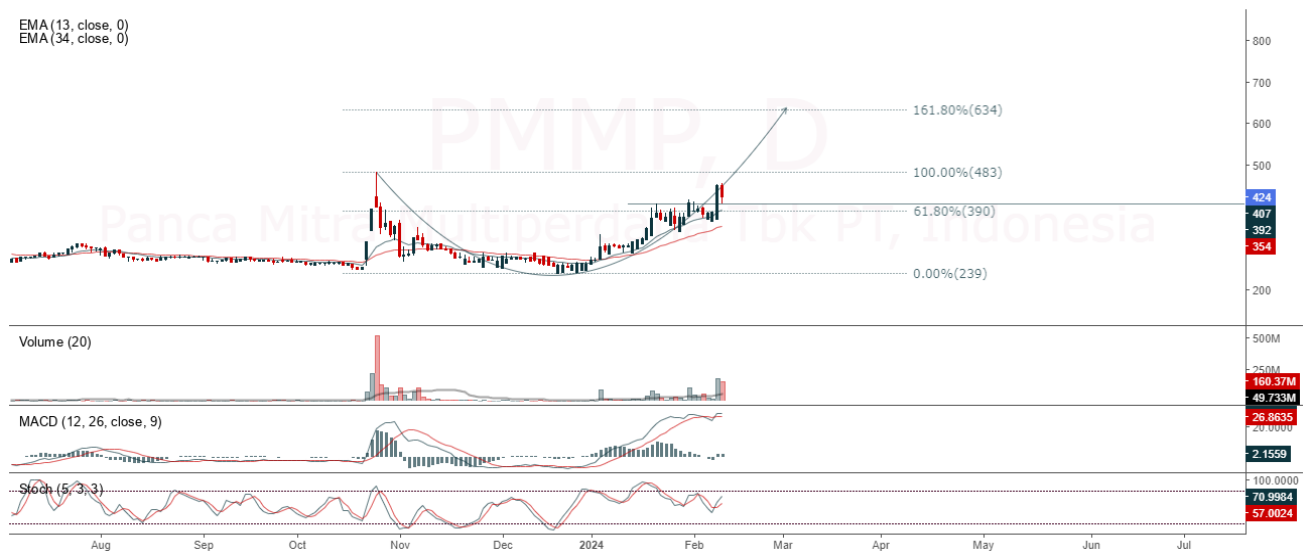
2. Stop Loss: To minimize the risk of loss, we recommend placing a stop loss at level 1,235.

- Entry Buy : 1,255 – 1,270
- Target Price : 1,295 – 1,320
- Support : 1,240 – 1,255
- Cut loss : 1,235

## PMMP

Panca Mitra Multiperdana Tbk PT, Indonesia, Jakarta:PMMP, D

EMA (13, close, 0)  
EMA (34, close, 0)



**(PMMP).** Price closed negative and still uptrend. Price has the opportunity strengthen to the next resistance. Stochastic is still bullish, MACD histogram is moving positive (line is flat) and volume is decreasing. Confirm buy if the next candle returns bullish or buy on support if it goes down first. Be careful if you fail to stay above the support level or become a support breakdown. **(Trading Buy)**

### TRADING STRATEGY:

- 1.Target Price: The price has a bullish opportunity to test the resistance level 454. If it breaks level 454 then the price will go to level 484. We recommend to be careful if the price fails to break through or turn around the support area.
2. Stop Loss: To minimize the risk of loss, we recommend placing a stop loss at level 398.

Entry Buy : 408 – 424  
Target Price : 454 – 484  
Support : 400 – 408  
Cut loss : 398



## Forecast – Technical Analysis

Ticker	MA5	RSI Rec	MACD Trend	Recomm.	Pivot Point	Support		Resistance		Stop Loss Level
						1	2	1	2	
JCI	Positive	Trading	Positive	Spec. Buy	7,250	7,200	7,150	7,300	7,350	7,050
ACES	Negative	Trading	Negative	Sell	820	810	805	825	835	790
ADRO	Negative	Trading	Positive	Hold	2,475	2,460	2,445	2,490	2,505	2,410
AKRA	Negative	Overbought	Negative	Strong Sell	1,630	1,615	1,595	1,650	1,665	1,570
AMRT	Positive	Trading	Positive	Spec. Buy	2,580	2,530	2,460	2,650	2,700	2,425
ANTM	Positive	Trading	Negative	Hold	1,530	1,485	1,435	1,580	1,625	1,415
ARTO	Negative	Trading	Negative	Sell	3,125	3,080	3,035	3,170	3,215	2,990
ASII	Positive	Trading	Positive	Spec. Buy	5,250	5,175	5,100	5,325	5,400	5,000
BBCA	Positive	Trading	Negative	Hold	9,750	9,700	9,650	9,800	9,850	9,500
BBNI	Negative	Overbought	Positive	Sell	5,925	5,875	5,800	6,000	6,050	5,700
BBRI	Negative	Overbought	Positive	Sell	6,025	5,975	5,925	6,075	6,125	5,825
BBTN	Negative	Trading	Positive	Hold	1,355	1,335	1,315	1,375	1,395	1,295
BMRI	Negative	Overbought	Positive	Sell	7,075	7,025	6,975	7,125	7,175	6,875
BRIS	Negative	Overbought	Positive	Sell	2,360	2,335	2,310	2,385	2,410	2,275
BRPT	Positive	Oversold	Positive	Buy	990	970	940	1,020	1,040	925
BUKA	Positive	Oversold	Negative	Spec. Buy	175	173	168	180	182	166
CPIN	Negative	Trading	Positive	Hold	4,765	4,705	4,665	4,805	4,865	4,595
EMTK	Positive	Oversold	Negative	Spec. Buy	471	464	457	478	485	450
ESSA	Negative	Trading	Negative	Sell	525	520	510	535	540	500
EXCL	Negative	Trading	Negative	Sell	2,325	2,290	2,235	2,380	2,415	2,200
GGRM	Negative	Trading	Positive	Hold	19,950	19,875	19,775	20,050	20,125	19,475
GOTO	Positive	Trading	Positive	Spec. Buy	86	85	83	88	89	82
HRUM	Positive	Oversold	Negative	Spec. Buy	1,130	1,115	1,090	1,155	1,170	1,075
ICBP	Positive	Trading	Negative	Hold	11,525	11,375	11,250	11,650	11,800	11,075
INCO	Positive	Trading	Positive	Spec. Buy	4,095	4,010	3,955	4,150	4,235	3,895
INDF	Positive	Trading	Negative	Hold	6,400	6,325	6,300	6,425	6,500	6,200
INKP	Positive	Trading	Positive	Spec. Buy	7,950	7,875	7,775	8,050	8,125	7,650
INTP	Positive	Oversold	Negative	Spec. Buy	8,825	8,725	8,650	8,900	9,000	8,500
ITMG	Negative	Trading	Negative	Sell	27,125	27,000	26,925	27,200	27,325	26,525
KLBF	Positive	Oversold	Negative	Spec. Buy	1,490	1,470	1,460	1,500	1,520	1,440
MAPI	Positive	Trading	Negative	Hold	1,960	1,950	1,920	1,990	2,000	1,890
MBMA	Positive	Trading	Negative	Hold	630	615	605	640	655	595
MDKA	Positive	Trading	Negative	Hold	2,425	2,390	2,355	2,460	2,495	2,320
MEDC	Negative	Trading	Negative	Sell	1,190	1,175	1,160	1,205	1,220	1,140
MTEL	Positive	Trading	Positive	Spec. Buy	665	660	650	675	680	640
PGAS	Negative	Trading	Positive	Hold	1,155	1,150	1,140	1,165	1,170	1,120
PGEO	Positive	Trading	Negative	Hold	1,220	1,205	1,190	1,235	1,250	1,170
PTBA	Negative	Trading	Positive	Hold	2,645	2,630	2,615	2,660	2,675	2,575
PTMP	Positive	Trading	Negative	Hold	236	224	214	246	258	211
SIDO	Negative	Trading	Positive	Hold	505	497	491	510	515	484
SMGR	Positive	Trading	Positive	Spec. Buy	6,200	6,150	6,100	6,250	6,300	6,000
SRTG	Negative	Trading	Positive	Hold	1,585	1,565	1,540	1,610	1,630	1,520
TLKM	Positive	Trading	Negative	Hold	3,995	3,980	3,965	4,010	4,025	3,905
TOWR	Positive	Oversold	Negative	Spec. Buy	880	870	860	890	900	845
UNTR	Negative	Trading	Negative	Sell	23,225	23,000	22,825	23,400	23,625	22,475
UNVR	Positive	Oversold	Negative	Spec. Buy	2,865	2,795	2,735	2,925	2,995	2,690

## OUR TEAM

**Sukarno Alatas**

Head of Equity Research

[sukarno@kiwoom.co.id](mailto:sukarno@kiwoom.co.id) | 021 5010 5800

**Abdul Azis Setyo Wibowo**

Equity Research Analyst

[azis@kiwoom.co.id](mailto:azis@kiwoom.co.id) | 021 5010 5800

**Miftahul Khaer**

Equity Research Analyst

[khaer.miftahul@kiwoom.co.id](mailto:khaer.miftahul@kiwoom.co.id) | 021 5010 5800

**Vicky Rosalinda**

Equity Research Analyst

[vicky.rosalinda@kiwoom.co.id](mailto:vicky.rosalinda@kiwoom.co.id) | 021 5010 5800

**Wahyu Saputra**

Research Associate

[wahyu.saputra@kiwoom.co.id](mailto:wahyu.saputra@kiwoom.co.id) | 021 5010 5800



### OTHER DISCLOSURES

All Kiwoom's research reports made available to clients are simultaneously available on our own website <http://www.kiwoom.co.id/>. Not all research content is redistributed, e-mailed or made available to third-party aggregators. For all research reports available on a particular stock, please contact your sales representative. Any data discrepancies in this report could be the result of different calculations and/or adjustments.

**DISCLAIMER** This report has been prepared and issued by PT Kiwoom Sekuritas Indonesia. Information has been obtained from sources believed to be reliable but Kiwoom Securities do not warrant its completeness or accuracy. Forward-looking information or statements in this report contain information that is based on forecast of future results, estimates of amounts not yet determinable, assumptions, and therefore involve known and unknown risks and uncertainties which may cause the actual results, performance or achievements of their subject matter to be materially different from current expectations.

To the fullest extent allowed by law, PT Kiwoom Sekuritas Indonesia shall not be liable for any direct, indirect or consequential losses, loss of profits, damages, costs or expenses incurred or suffered by any person or organization arising from reliance on or use of any information contained on this report. The information that we provide should not be construed in any manner whatsoever as, personalized advice.

No mention of a particular security in this report constitutes a recommendation to buy, sell or hold that or any security, or that any particular security, portfolio of securities, transaction or investment strategy is suitable for any specific person. This report is being supplied to you solely for your information and may not be reproduced by, further distributed to or published in whole or in part by, any other person.