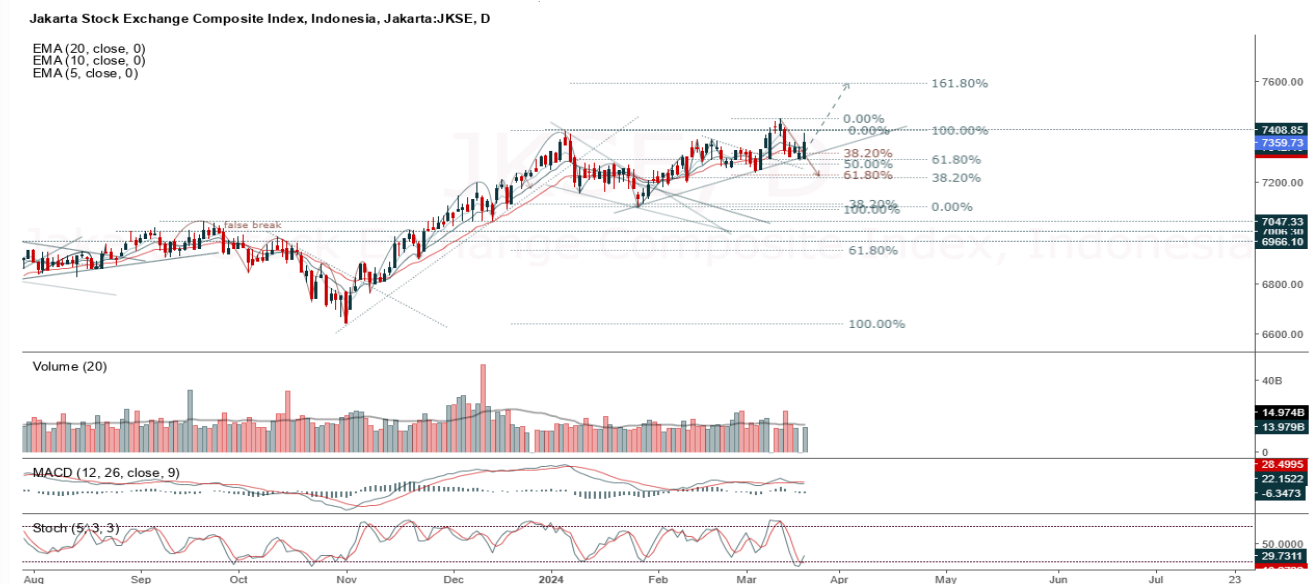


**JCI Range Today 7,277 – 7,295 (Support), 7,361 – 7,396 (Resistance)**

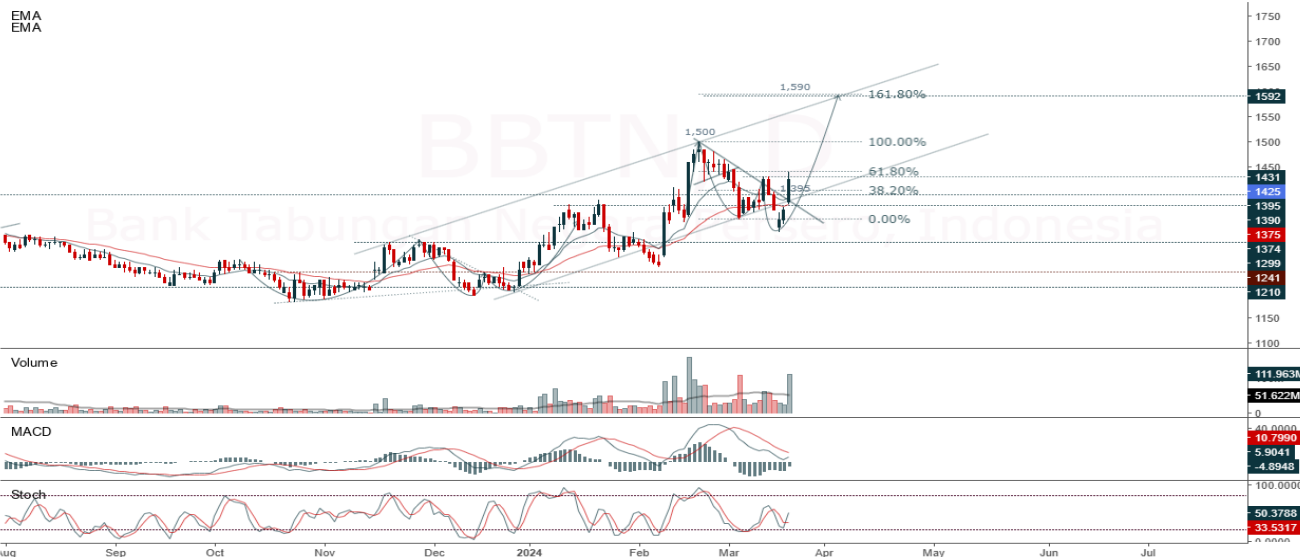


**Jakarta Composite Index**, JCI closed higher with bullish candle. Indicator from stochastic is golden cross, MACD histogram is moving negative (line is flat) and volume is decreasing. Bearish scenario: If it moves bearish again, JCI is expected to weaken again to the support range of 7,277 – 7,295. Bullish scenario: If JCI is able to move bullish, JCI has the opportunity to break resistance 7,361 – 7,396.

**Stock Pick Today: BBTN, HRTA, MDKA, MYOR**

**BBTN**

Bank Tabungan Negara Persero, Indonesia, Jakarta:BBTN, D



**(BBTN).** Price closed higher and testing resistance. Price is expected to test the nearest resistance and continue strengthening to the next resistance. Stochastic is golden cross, MACD histogram is moving positive direction (line is golden cross potential) and volume is increasing significantly. Confirm buy if the next candle returns bullish or buy on support if it goes down first. Be careful if you fail to stay above the support level or become a support breakdown. **(Trading Buy)**

**TRADING STRATEGY:**

1. **Target Price:** The price has a bullish opportunity to test the resistance level 1,460. If it breaks level 1,460 then the price will go to level 1,485. We recommend to be careful if the price fails to break through or turn around the support area.

2. **Stop Loss:** To minimize the risk of loss, we recommend placing a stop loss at level 1,365.

- Entry Buy : 1,405 – 1,425
- Target Price : 1,460 – 1,485
- Support : 1,370 – 1,405
- Cut loss : 1,365

**HRTA**

Hartadinata Abadi Tbk PT, Indonesia, Jakarta:HRTA, D

EMA (13, close, 0)  
EMA (34, close, 0)



**(HRTA).** Price closed higher and breakout resistance. Price has the opportunity strengthen to the next resistance. Stochastic is golden cross, MACD histogram is moving positive (line is bullish) and volume is increasing significantly. Confirm buy if the next candle returns bullish or buy on support if it goes down first. Be careful if you fail to stay above the support level or become a support breakdown. **(Trading Buy)**

**TRADING STRATEGY:**

1. Target Price: The price has a bullish opportunity to test the resistance level 424. If it breaks level 424 then the price will go to level 430. We recommend to be careful if the price fails to break through or turn around the support area.
2. Stop Loss: To minimize the risk of loss, we recommend placing a stop loss at level 396.

Entry Buy : 402 – 412  
 Target Price : 424 – 430  
 Support : 398 – 402  
 Cut loss : 396

## MDKA

Merdeka Copper Gold TBK PT, Indonesia, Jakarta:MDKA, D



**(MDKA).** Price closed higher and double bottom pattern potential. Price has the opportunity strengthen to the nearest resistance. Stochastic is golden cross, MACD histogram is moving positive (line is bullish) and volume is increasing significantly. Confirm buy if the next candle returns bullish or buy on support if it goes down first. Be careful if you fail to stay above the support level or become a support breakdown. **(Trading Buy)**

### TRADING STRATEGY:

1. **Target Price:** The price has a bullish opportunity to test the resistance level 2,450. If it breaks level 2,450 then the price will go to level 2,490. We recommend to be careful if the price fails to break through or turn around the support area.

2. **Stop Loss:** To minimize the risk of loss, we recommend placing a stop loss at level 2,310.

Entry Buy : 2,360 – 2,400  
 Target Price : 2,450 – 2,490  
 Support : 2,320 – 2,360  
 Cut loss : 2,310

**MYOR**

Mayora Indah Tbk, Indonesia, Jakarta:MYOR, D

EMA  
EMA



**(MYOR).** Price closed higher and breakout resistance. Price has the opportunity strengthen to the next resistance. Stochastic is still bullish, MACD histogram is moving positive (line is bullish) and volume is decreasing. Confirm buy if the next candle returns bullish or buy on support if it goes down first. Be careful if you fail to stay above the support level or become a support breakdown. **(Trading Buy)**

**TRADING STRATEGY:**

1. **Target Price:** The price has a bullish opportunity to test the resistance level 2,590. If it breaks level 2,590 then the price will go to level 2,640. We recommend to be careful if the price fails to break through or turn around the support area.

2. **Stop Loss:** To minimize the risk of loss, we recommend placing a stop loss at level 2,500.

- Entry Buy : 2,530 – 2,550
- Target Price : 2,590 – 2,640
- Support : 2,510 – 2,530
- Cut loss : 2,500

## Forecast – Technical Analysis

Ticker	MA5	RSI Rec	MACD Trend	Recomm.	Pivot Point	Support		Resistance		Stop Loss Level
						1	2	1	2	
JCI	Positive	Trading	Negative	Hold	7,350	7,325	7,300	7,375	7,425	7,200
ACES	Negative	Overbought	Positive	Sell	930	910	895	945	965	880
ADRO	Positive	Overbought	Positive	Hold	2,660	2,615	2,590	2,685	2,730	2,550
AKRA	Negative	Overbought	Positive	Sell	1,790	1,755	1,725	1,820	1,855	1,700
AMRT	Positive	Overbought	Positive	Hold	2,900	2,890	2,870	2,920	2,930	2,825
ANTM	Negative	Overbought	Positive	Sell	1,695	1,675	1,655	1,715	1,735	1,630
ARTO	Positive	Oversold	Positive	Buy	2,645	2,590	2,545	2,690	2,745	2,505
ASII	Positive	Trading	Positive	Spec. Buy	5,325	5,275	5,200	5,400	5,450	5,125
BBCA	Positive	Trading	Positive	Spec. Buy	10,150	10,075	9,975	10,250	10,325	9,825
BBNI	Positive	Trading	Negative	Hold	5,850	5,800	5,725	5,925	5,975	5,650
BBRI	Positive	Trading	Negative	Hold	6,150	6,100	6,050	6,200	6,250	5,950
BBTN	Positive	Trading	Negative	Hold	1,410	1,360	1,325	1,445	1,495	1,305
BMRI	Positive	Trading	Negative	Hold	7,100	7,000	6,950	7,150	7,250	6,850
BRIS	Positive	Overbought	Positive	Hold	2,690	2,655	2,630	2,715	2,750	2,590
BRPT	Positive	Trading	Positive	Spec. Buy	960	950	940	970	980	925
BUKA	Positive	Oversold	Negative	Spec. Buy	141	136	132	145	150	130
CPIN	Negative	Overbought	Positive	Sell	5,275	5,250	5,175	5,350	5,375	5,100
EMTK	Positive	Trading	Negative	Hold	437	427	423	441	451	416
ESSA	Negative	Overbought	Positive	Sell	620	605	580	645	660	575
EXCL	Positive	Trading	Negative	Hold	2,430	2,390	2,350	2,470	2,510	2,315
GGRM	Positive	Trading	Negative	Hold	19,900	19,600	19,400	20,100	20,400	19,100
GOTO	Positive	Oversold	Positive	Buy	67	65	63	69	71	62
HRUM	Negative	Overbought	Positive	Sell	1,375	1,360	1,335	1,400	1,415	1,315
ICBP	Negative	Trading	Negative	Sell	11,100	10,950	10,825	11,225	11,375	10,650
INCO	Positive	Trading	Positive	Spec. Buy	4,205	4,110	4,035	4,280	4,375	3,975
INDF	Negative	Trading	Negative	Sell	6,475	6,425	6,375	6,525	6,575	6,275
INKP	Negative	Overbought	Positive	Sell	9,225	9,100	8,975	9,350	9,475	8,825
INTP	Positive	Oversold	Negative	Spec. Buy	8,625	8,500	8,450	8,675	8,800	8,300
ITMG	Negative	Trading	Positive	Hold	27,775	27,450	27,175	28,050	28,375	26,775
KLBF	Negative	Trading	Positive	Hold	1,480	1,450	1,430	1,500	1,530	1,405
MAPI	Positive	Oversold	Negative	Spec. Buy	1,825	1,780	1,760	1,845	1,890	1,730
MBMA	Positive	Oversold	Negative	Spec. Buy	483	474	467	490	499	460
MDKA	Positive	Trading	Positive	Spec. Buy	2,360	2,295	2,230	2,425	2,490	2,195
MEDC	Positive	Overbought	Positive	Hold	1,435	1,420	1,400	1,455	1,470	1,380
MTEL	Positive	Oversold	Negative	Spec. Buy	620	605	600	625	640	590
PGAS	Negative	Overbought	Positive	Sell	1,315	1,285	1,260	1,340	1,370	1,240
PGEO	Negative	Trading	Negative	Sell	1,200	1,175	1,165	1,210	1,235	1,145
PTBA	Negative	Overbought	Positive	Sell	2,935	2,885	2,855	2,965	3,015	2,810
PTMP	Positive	Oversold	Negative	Spec. Buy	223	209	199	233	247	196
SIDO	Negative	Overbought	Negative	Strong Sell	635	625	615	645	655	605
SMGR	Positive	Oversold	Negative	Spec. Buy	5,750	5,700	5,650	5,800	5,850	5,575
SRTG	Positive	Oversold	Negative	Spec. Buy	1,450	1,440	1,415	1,475	1,485	1,395
TLKM	Positive	Trading	Negative	Hold	3,920	3,875	3,850	3,945	3,990	3,790
TOWR	Positive	Oversold	Negative	Spec. Buy	855	845	840	860	870	825
UNTR	Negative	Overbought	Positive	Sell	24,700	24,500	24,350	24,850	25,050	23,975
UNVR	Negative	Trading	Positive	Hold	2,745	2,710	2,685	2,770	2,805	2,645

## OUR TEAM

**Sukarno Alatas**

Head of Equity Research

[sukarno@kiwoom.co.id](mailto:sukarno@kiwoom.co.id) | 021 5010 5800

**Abdul Azis Setyo Wibowo**

Equity Research Analyst

[azis@kiwoom.co.id](mailto:azis@kiwoom.co.id) | 021 5010 5800

**Miftahul Khaer**

Equity Research Analyst

[khaer.miftahul@kiwoom.co.id](mailto:khaer.miftahul@kiwoom.co.id) | 021 5010 5800

**Vicky Rosalinda**

Equity Research Analyst

[vicky.rosalinda@kiwoom.co.id](mailto:vicky.rosalinda@kiwoom.co.id) | 021 5010 5800

**Wahyu Saputra**

Research Associate

[wahyu.saputra@kiwoom.co.id](mailto:wahyu.saputra@kiwoom.co.id) | 021 5010 5800



### OTHER DISCLOSURES

All Kiwoom's research reports made available to clients are simultaneously available on our own website <http://www.kiwoom.co.id/>. Not all research content is redistributed, e-mailed or made available to third-party aggregators. For all research reports available on a particular stock, please contact your sales representative. Any data discrepancies in this report could be the result of different calculations and/or adjustments.

**DISCLAIMER** This report has been prepared and issued by PT Kiwoom Sekuritas Indonesia. Information has been obtained from sources believed to be reliable but Kiwoom Securities do not warrant its completeness or accuracy. Forward-looking information or statements in this report contain information that is based on forecast of future results, estimates of amounts not yet determinable, assumptions, and therefore involve known and unknown risks and uncertainties which may cause the actual results, performance or achievements of their subject matter to be materially different from current expectations.

To the fullest extent allowed by law, PT Kiwoom Sekuritas Indonesia shall not be liable for any direct, indirect or consequential losses, loss of profits, damages, costs or expenses incurred or suffered by any person or organization arising from reliance on or use of any information contained on this report. The information that we provide should not be construed in any manner whatsoever as, personalized advice.

No mention of a particular security in this report constitutes a recommendation to buy, sell or hold that or any security, or that any particular security, portfolio of securities, transaction or investment strategy is suitable for any specific person. This report is being supplied to you solely for your information and may not be reproduced by, further distributed to or published in whole or in part by, any other person.