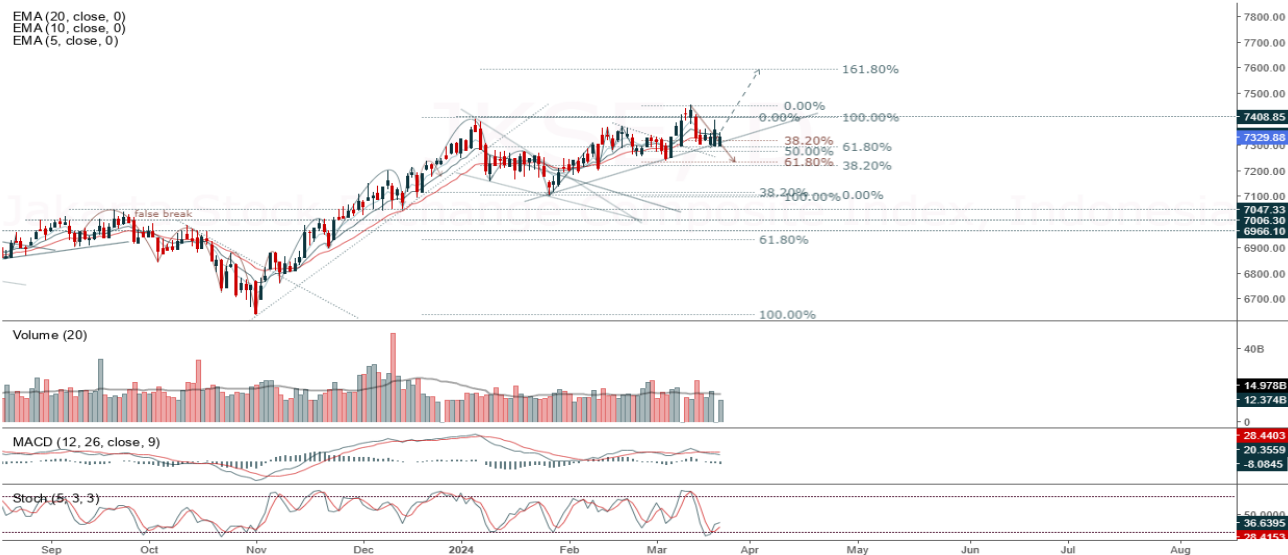


JCI Range Today 7,308 – 7,318 (Support), 7,396 – 7,403 (Resistance)

Jakarta Stock Exchange Composite Index, Indonesia, Jakarta:JKSE, D



Jakarta Composite Index, JCI closed positive with bullish candle. Indicator from stochastic is bullish, MACD histogram is moving negative (line is flat) and volume is decreasing. Bearish scenario: If it moves bearish again, JCI is expected to weaken again to the support range of 7,308 – 7,318. Bullish scenario: If JCI is able to move bullish, JCI has the opportunity to break resistance 7,396 – 7,403.

Stock Pick Today: ASSA, BBTN, INKP, TOWR

ASSA

Adi Sarana Armada Tbk, Indonesia, Jakarta:ASSA, D

EMA (13, close, 0)
EMA (34, close, 0)



(ASSA). Price closed higher with swing low. Price has the opportunity strengthen to the nearest resistance. Stochastic is neutral, MACD histogram is moving positive (line is bullish) and volume is decreasing. Confirm buy if the next candle returns bullish or buy on support if it goes down first. Be careful if you fail to stay above the support level or become a support breakdown. **(Trading Buy)**

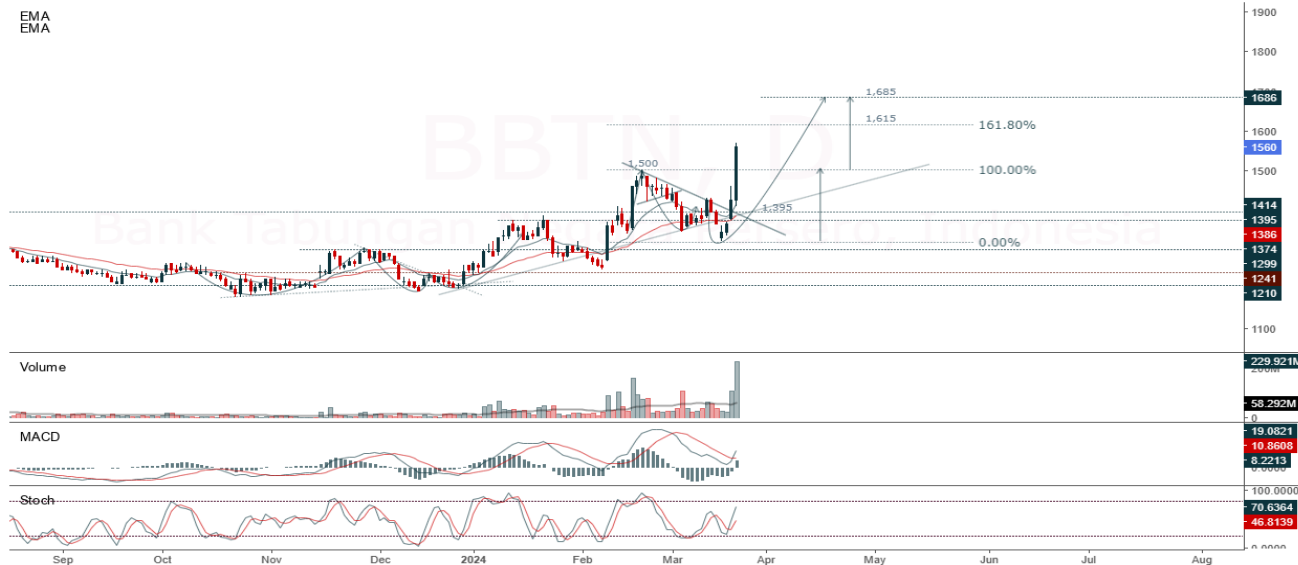
TRADING STRATEGY:

1. Target Price: The price has a bullish opportunity to test the resistance level 855. If it breaks level 855 then the price will go to level 885. We recommend to be careful if the price fails to break through or turn around the support area.
2. Stop Loss: To minimize the risk of loss, we recommend placing a stop loss at level 800.

Entry Buy : 820 – 835
Target Price : 855 – 885
Support : 805 – 820
Cut loss : 800

BBTN

Bank Tabungan Negara Persero, Indonesia, Jakarta:BBTN, D



(BBTN). Price closed higher and breakout resistance. Price has the opportunity strengthen to the next resistance. Stochastic is still bullish, MACD histogram is moving positive (line is golden cross) and volume is increasing significantly. Confirm buy if the next candle returns bullish or buy on support if it goes down first. Be careful if you fail to stay above the support level or become a support breakdown.
(Trading Buy)

TRADING STRATEGY:

1. Target Price: The price has a bullish opportunity to test the resistance level 1,600. If it breaks level 1,600 then the price will go to level 1,630. We recommend to be careful if the price fails to break through or turn around the support area.
2. Stop Loss: To minimize the risk of loss, we recommend placing a stop loss at level 1,495.

Entry Buy : 1,535 – 1,560
 Target Price : 1,600 – 1,630
 Support : 1,500 – 1,535
 Cut loss : 1,495

INKP

Indah Kiat Pulp & Paper Tbk, Indonesia, Jakarta:INKP, D

EMA (13, close, 0)
EMA (34, close, 0)



(INKP). Price closed higher with bullish candle. Price has the opportunity strengthen to the nearest resistance. Stochastic is golden cross, MACD histogram is moving positive (line is bullish) and volume is increasing. Confirm buy if the next candle returns bullish or buy on support if it goes down first. Be careful if you fail to stay above the support level or become a support breakdown. **(Trading Buy)**

TRADING STRATEGY:

1. **Target Price:** The price has a bullish opportunity to test the resistance level 9,550. If it breaks level 9,550 then the price will go to level 9,600. We recommend to be careful if the price fails to break through or turn around the support area.

2. **Stop Loss:** To minimize the risk of loss, we recommend placing a stop loss at level 9,200.

Entry Buy : 9,275 – 9,350
Target Price : 9,550 – 9,600
Support : 9,225 – 9,275
Cut loss : 9,200

TOWR

Sarana Menara Nusantara Tbk, Indonesia, Jakarta:TOWR, D

EMA (13, close, 0)
EMA (34, close, 0)



(TOWR). Price closed positive and breakup trendline resistance. Price has the opportunity strengthen to the nearest resistance. Stochastic is bullish, MACD histogram is moving positive direction (line is golden cross potential) and volume is increasing. Confirm buy if the next candle returns bullish or buy on support if it goes down first. Be careful if you fail to stay above the support level or become a support breakdown. **(Trading Buy)**

TRADING STRATEGY:

1. **Target Price:** The price has a bullish opportunity to test the resistance level 895. If it breaks level 895 then the price will go to level 905. We recommend to be careful if the price fails to break through or turn around the support area.

2. **Stop Loss:** To minimize the risk of loss, we recommend placing a stop loss at level 850.

Entry Buy : 865 – 875

Target Price : 895 – 905

Support : 855 – 865

Cut loss : 850

Forecast – Technical Analysis

Ticker	MA5	RSI Rec	MACD Trend	Recomm.	Pivot Point	Support		Resistance		Stop Loss Level
						1	2	1	2	
JCI	Negative	Trading	Negative	Sell	7,325	7,325	7,300	7,350	7,375	7,200
ACES	Negative	Overbought	Positive	Sell	920	910	895	935	945	885
ADRO	Positive	Overbought	Positive	Hold	2,660	2,635	2,630	2,665	2,690	2,590
AKRA	Negative	Overbought	Positive	Sell	1,730	1,690	1,635	1,785	1,825	1,610
AMRT	Negative	Overbought	Positive	Sell	2,910	2,875	2,860	2,925	2,960	2,815
ANTM	Negative	Overbought	Positive	Sell	1,685	1,665	1,645	1,705	1,725	1,620
ARTO	Positive	Trading	Positive	Spec. Buy	2,715	2,650	2,615	2,750	2,815	2,575
ASII	Negative	Trading	Positive	Hold	5,375	5,350	5,325	5,400	5,425	5,225
BBCA	Positive	Trading	Positive	Spec. Buy	10,050	9,975	9,875	10,150	10,225	9,725
BBNI	Negative	Trading	Negative	Sell	5,850	5,825	5,775	5,900	5,925	5,675
BBRI	Negative	Trading	Negative	Sell	6,100	6,050	6,025	6,125	6,175	5,925
BBTN	Negative	Trading	Negative	Sell	1,490	1,415	1,330	1,575	1,650	1,310
BMRI	Positive	Trading	Negative	Hold	7,025	6,975	6,900	7,100	7,150	6,800
BRIS	Positive	Overbought	Negative	Sell	2,655	2,625	2,595	2,685	2,715	2,555
BRPT	Positive	Trading	Positive	Spec. Buy	950	945	930	965	970	915
BUKA	Positive	Oversold	Negative	Spec. Buy	148	142	137	153	159	134
CPIN	Negative	Overbought	Positive	Sell	5,275	5,250	5,150	5,375	5,400	5,075
EMTK	Negative	Oversold	Negative	Spec. Buy	443	430	423	450	463	417
ESSA	Negative	Overbought	Positive	Sell	645	630	605	670	685	595
EXCL	Negative	Trading	Negative	Sell	2,410	2,370	2,340	2,440	2,480	2,305
GGRM	Negative	Trading	Negative	Sell	19,975	19,800	19,575	20,200	20,375	19,275
GOTO	Positive	Trading	Positive	Spec. Buy	67	66	64	69	70	63
HRUM	Positive	Overbought	Positive	Hold	1,380	1,365	1,330	1,415	1,430	1,310
ICBP	Negative	Trading	Negative	Sell	11,050	10,950	10,825	11,175	11,275	10,650
INCO	Positive	Trading	Positive	Spec. Buy	4,205	4,135	4,055	4,285	4,355	3,990
INDF	Negative	Trading	Negative	Sell	6,450	6,400	6,375	6,475	6,525	6,275
INKP	Negative	Overbought	Positive	Sell	9,275	9,100	8,950	9,425	9,600	8,825
INTP	Positive	Oversold	Negative	Spec. Buy	8,700	8,550	8,450	8,800	8,950	8,300
ITMG	Negative	Overbought	Positive	Sell	27,850	27,600	27,500	27,950	28,200	27,100
KLBF	Negative	Trading	Positive	Hold	1,490	1,465	1,450	1,505	1,530	1,430
MAPI	Positive	Oversold	Negative	Spec. Buy	1,805	1,790	1,760	1,835	1,850	1,730
MBMA	Positive	Oversold	Negative	Spec. Buy	485	478	471	492	499	464
MDKA	Negative	Trading	Positive	Hold	2,360	2,315	2,270	2,405	2,450	2,235
MEDC	Negative	Overbought	Positive	Sell	1,425	1,415	1,400	1,440	1,450	1,380
MTEL	Negative	Oversold	Negative	Spec. Buy	615	610	605	620	625	595
PGAS	Negative	Strong Sell	Positive	Sell	1,325	1,315	1,295	1,345	1,355	1,275
PGEO	Negative	Trading	Positive	Hold	1,195	1,190	1,180	1,205	1,210	1,160
PTBA	Negative	Overbought	Positive	Sell	2,955	2,925	2,915	2,965	2,995	2,870
PTMP	Positive	Oversold	Negative	Spec. Buy	211	198	186	223	236	183
SIDO	Negative	Overbought	Negative	Strong Sell	630	620	600	650	660	590
SMGR	Positive	Oversold	Negative	Spec. Buy	5,775	5,700	5,650	5,825	5,900	5,575
SRTG	Positive	Oversold	Negative	Spec. Buy	1,450	1,435	1,415	1,470	1,485	1,395
TLKM	Positive	Trading	Negative	Hold	3,905	3,885	3,875	3,915	3,935	3,815
TOWR	Positive	Oversold	Negative	Spec. Buy	865	860	845	880	885	835
UNTR	Negative	Overbought	Positive	Sell	24,675	24,575	24,425	24,825	24,925	24,050
UNVR	Negative	Trading	Positive	Hold	2,715	2,680	2,635	2,760	2,795	2,595

OUR TEAM

Sukarno Alatas

Head of Equity Research

sukarno@kiwoom.co.id | 021 5010 5800

Abdul Azis Setyo Wibowo

Equity Research Analyst

azis@kiwoom.co.id | 021 5010 5800

Miftahul Khaer

Equity Research Analyst

khaer.miftahul@kiwoom.co.id | 021 5010 5800

Vicky Rosalinda

Equity Research Analyst

vicky.rosalinda@kiwoom.co.id | 021 5010 5800

Wahyu Saputra

Research Associate

wahyu.saputra@kiwoom.co.id | 021 5010 5800



OTHER DISCLOSURES

All Kiwoom's research reports made available to clients are simultaneously available on our own website <http://www.kiwoom.co.id/>. Not all research content is redistributed, e-mailed or made available to third-party aggregators. For all research reports available on a particular stock, please contact your sales representative. Any data discrepancies in this report could be the result of different calculations and/or adjustments.

DISCLAIMER This report has been prepared and issued by PT Kiwoom Sekuritas Indonesia. Information has been obtained from sources believed to be reliable but Kiwoom Securities do not warrant its completeness or accuracy. Forward-looking information or statements in this report contain information that is based on forecast of future results, estimates of amounts not yet determinable, assumptions, and therefore involve known and unknown risks and uncertainties which may cause the actual results, performance or achievements of their subject matter to be materially different from current expectations.

To the fullest extent allowed by law, PT Kiwoom Sekuritas Indonesia shall not be liable for any direct, indirect or consequential losses, loss of profits, damages, costs or expenses incurred or suffered by any person or organization arising from reliance on or use of any information contained on this report. The information that we provide should not be construed in any manner whatsoever as, personalized advice.

No mention of a particular security in this report constitutes a recommendation to buy, sell or hold that or any security, or that any particular security, portfolio of securities, transaction or investment strategy is suitable for any specific person. This report is being supplied to you solely for your information and may not be reproduced by, further distributed to or published in whole or in part by, any other person.