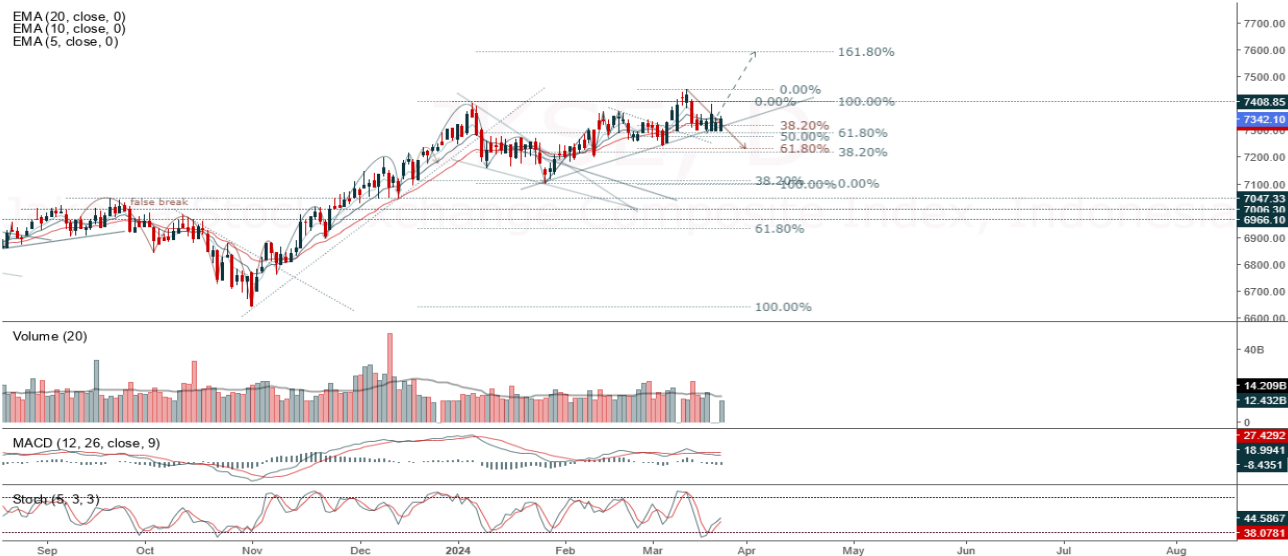


**JCI Range Today 7,337 – 7,350 (Support), 7,403 – 7,416 (Resistance)**

Jakarta Stock Exchange Composite Index, Indonesia, Jakarta:JKSE, D



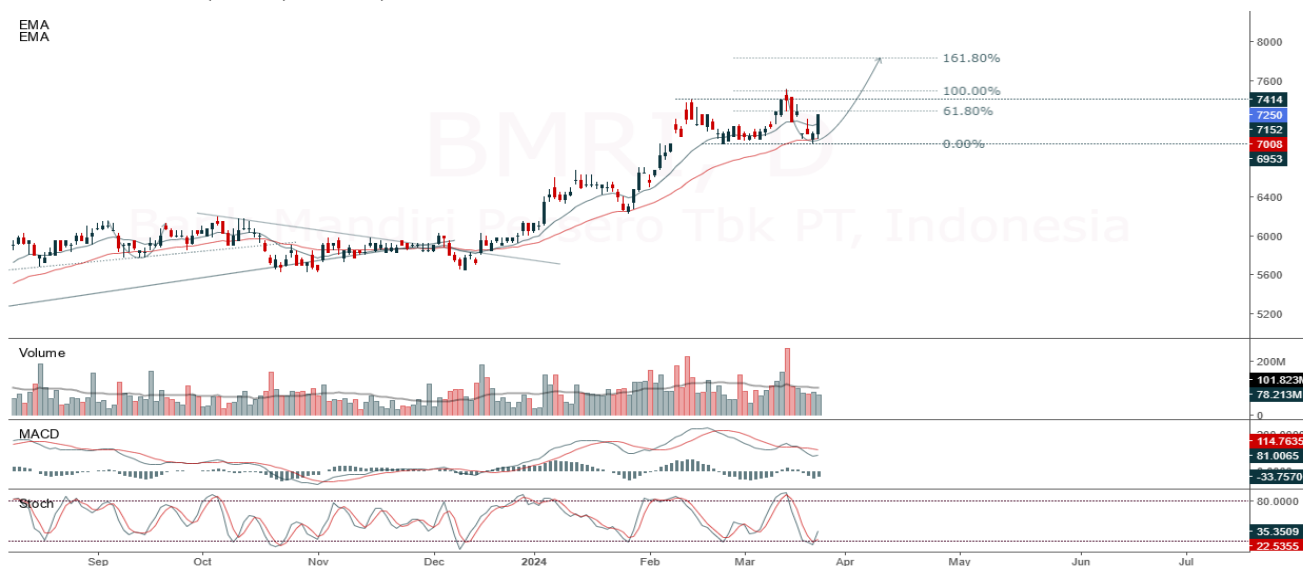
**Jakarta Composite Index**, Price closed higher and breakout resistance. Indicator from stochastic is still bullish, MACD histogram is moving positive direction (line is golden cross potential) and volume is neutral. Bearish scenario: If it moves bearish again, JCI is expected to weaken again to the support range of 7,337 – 7,350. Bullish scenario: If JCI is able to move bullish, JCI has the opportunity to break resistance 7,403 – 7,416.

**Stock Pick Today: BMRI, BSDE, MYOR, PGAS**

## BMRI

Bank Mandiri Persero Tbk PT, Indonesia, Jakarta:BMRI, D

EMA  
EMA



**(BMRI).** Price closed higher and double bottom pattern potential. Price has the opportunity strengthen to the nearest resistance. Stochastic is bullish, MACD histogram is moving positive direction (line is golden cross potential) and volume is neutral. Confirm buy if the next candle returns bullish or buy on support if it goes down first. Be careful if you fail to stay above the support level or become a support breakdown. **(Trading Buy)**

### TRADING STRATEGY:

1. **Target Price:** The price has a bullish opportunity to test the resistance level 7,400. If it breaks level 7,400 then the price will go to level 7,500. We recommend to be careful if the price fails to break through or turn around the support area.

2. **Stop Loss:** To minimize the risk of loss, we recommend placing a stop loss at level 7,075.

Entry Buy : 7,150 – 7,250  
Target Price : 7,400 – 7,500  
Support : 7,100 – 7,150  
Cut loss : 7,075

**BSDE**

Bumi Serpong Damai Tbk, Indonesia, Jakarta:BSDE, D

EMA (13, close, 0)

EMA (34, close, 0)



**(BSDE).** Price closed higher and testing trendline resistance. Price has the opportunity strengthen to the nearest resistance. Stochastic is still bullish, MACD histogram is moving positive (line is golden cross) and volume is increasing. Confirm buy if the next candle returns bullish or buy on support if it goes down first. Be careful if you fail to stay above the support level or become a support breakdown.  
**(Trading Buy)**

**TRADING STRATEGY:**

1. Target Price: The price has a bullish opportunity to test the resistance level 1,040. If it breaks level 1,040 then the price will go to level 1,060. We recommend to be careful if the price fails to break through or turn around the support area.
2. Stop Loss: To minimize the risk of loss, we recommend placing a stop loss at level 980.

Entry Buy : 990 – 1,010  
 Target Price : 1,040 – 1,060  
 Support : 985 – 990  
 Cut loss : 980

## MYOR

Mayora Indah Tbk, Indonesia, Jakarta:MYOR, D

EMA  
EMA



**(MYOR).** Price closed higher and breakout resistance. Price has the opportunity strengthen to the next resistance. Stochastic is golden cross, MACD histogram is moving positive (line is bullish) and volume is increasing. Confirm buy if the next candle returns bullish or buy on support if it goes down first. Be careful if you fail to stay above the support level or become a support breakdown. **(Trading Buy)**

### TRADING STRATEGY:

1. **Target Price:** The price has a bullish opportunity to test the resistance level 2,640. If it breaks level 2,640 then the price will go to level 2,700. We recommend to be careful if the price fails to break through or turn around the support area.

2. **Stop Loss:** To minimize the risk of loss, we recommend placing a stop loss at level 2,520.

Entry Buy : 2,550 – 2,590  
 Target Price : 2,640 – 2,700  
 Support : 2,530 – 2,550  
 Cut loss : 2,520

**PGAS**

Perusahaan Gas Negara Persero, Indonesia, Jakarta:PGAS, D

EMA (13, close, 0)  
EMA (34, close, 0)



**(PGAS).** Price closed higher with swing low. Price has the opportunity strengthen to the nearest resistance. Stochastic is bullish, MACD histogram is moving positive (line is bullish) and volume is neutral. Confirm buy if the next candle returns bullish or buy on support if it goes down first. Be careful if you fail to stay above the support level or become a support breakdown. **(Trading Buy)**

**TRADING STRATEGY:**

1. Target Price: The price has a bullish opportunity to test the resistance level 1,385. If it breaks level 1,385 then the price will go to level 1,410. We recommend to be careful if the price fails to break through or turn around the support area.
2. Stop Loss: To minimize the risk of loss, we recommend placing a stop loss at level 1,320.

Entry Buy : 1,335 – 1,350  
 Target Price : 1,385 – 1,410  
 Support : 1,325 – 1,335  
 Cut loss : 1,320

## Forecast – Technical Analysis

Ticker	MA5	RSI Rec	MACD Trend	Recomm.	Pivot Point	Support		Resistance		Stop Loss Level
						1	2	1	2	
JCI	Negative	Trading	Negative	Sell	7,350	7,325	7,300	7,400	7,425	7,175
ACES	Negative	Overbought	Positive	Sell	920	900	875	945	965	865
ADRO	Negative	Overbought	Positive	Sell	2,660	2,650	2,640	2,670	2,680	2,600
AKRA	Negative	Trading	Negative	Sell	1,720	1,700	1,680	1,740	1,760	1,655
AMRT	Negative	Overbought	Positive	Sell	2,885	2,860	2,825	2,920	2,945	2,785
ANTM	Negative	Overbought	Positive	Sell	1,665	1,650	1,630	1,685	1,700	1,605
ARTO	Positive	Trading	Positive	Spec. Buy	2,745	2,695	2,655	2,785	2,835	2,615
ASII	Negative	Trading	Positive	Hold	5,375	5,325	5,275	5,425	5,475	5,200
BBCA	Positive	Trading	Negative	Hold	10,000	9,925	9,850	10,075	10,150	9,700
BBNI	Negative	Trading	Negative	Sell	5,875	5,850	5,775	5,950	5,975	5,700
BBRI	Negative	Trading	Negative	Sell	6,200	6,150	6,075	6,275	6,325	5,975
BBTN	Negative	Overbought	Positive	Sell	1,565	1,540	1,495	1,610	1,635	1,470
BMRI	Positive	Trading	Negative	Hold	7,150	7,025	6,900	7,275	7,400	6,775
BRIS	Negative	Trading	Negative	Sell	2,655	2,630	2,605	2,680	2,705	2,565
BRPT	Positive	Oversold	Negative	Spec. Buy	955	935	910	980	1,000	895
BUKA	Positive	Trading	Positive	Spec. Buy	146	143	138	151	154	136
CPIN	Negative	Overbought	Positive	Sell	5,275	5,225	5,150	5,350	5,400	5,075
EMTK	Positive	Trading	Positive	Spec. Buy	441	436	429	448	453	423
ESSA	Negative	Overbought	Positive	Sell	655	640	630	665	680	620
EXCL	Negative	Trading	Negative	Sell	2,410	2,380	2,360	2,430	2,460	2,325
GGRM	Negative	Trading	Negative	Sell	19,900	19,750	19,600	20,050	20,200	19,300
GOTO	Positive	Trading	Positive	Spec. Buy	68	68	66	70	70	65
HRUM	Positive	Overbought	Positive	Hold	1,370	1,350	1,330	1,390	1,410	1,310
ICBP	Negative	Trading	Negative	Sell	11,175	11,025	10,900	11,300	11,450	10,725
INCO	Positive	Trading	Positive	Spec. Buy	4,120	4,055	3,970	4,205	4,270	3,910
INDF	Positive	Trading	Negative	Hold	6,450	6,400	6,375	6,475	6,525	6,275
INKP	Negative	Overbought	Positive	Sell	9,550	9,275	9,050	9,775	10,050	8,900
INTP	Positive	Oversold	Negative	Spec. Buy	8,675	8,625	8,550	8,750	8,800	8,425
ITMG	Negative	Overbought	Positive	Sell	27,900	27,675	27,500	28,075	28,300	27,075
KLBF	Negative	Trading	Positive	Hold	1,505	1,485	1,470	1,520	1,540	1,445
MAPI	Positive	Oversold	Negative	Spec. Buy	1,820	1,805	1,790	1,835	1,850	1,760
MBMA	Positive	Oversold	Negative	Spec. Buy	489	484	479	494	499	472
MDKA	Negative	Trading	Positive	Hold	2,330	2,310	2,260	2,380	2,400	2,225
MEDC	Positive	Overbought	Positive	Hold	1,405	1,390	1,355	1,440	1,455	1,335
MTEL	Positive	Oversold	Negative	Spec. Buy	620	615	610	625	630	600
PGAS	Negative	Overbought	Positive	Sell	1,335	1,320	1,290	1,365	1,380	1,270
PGEO	Negative	Trading	Positive	Hold	1,190	1,185	1,170	1,205	1,210	1,155
PTBA	Negative	Overbought	Positive	Sell	2,930	2,910	2,880	2,960	2,980	2,835
PTMP	Positive	Oversold	Negative	Spec. Buy	184	169	147	206	221	145
SIDO	Negative	Overbought	Negative	Strong Sell	625	620	610	635	640	600
SMGR	Negative	Trading	Negative	Sell	5,800	5,775	5,725	5,850	5,875	5,650
SRTG	Positive	Oversold	Negative	Spec. Buy	1,460	1,450	1,435	1,475	1,485	1,415
TLKM	Positive	Trading	Negative	Hold	3,800	3,710	3,610	3,900	3,990	3,555
TOWR	Positive	Trading	Negative	Hold	870	865	855	880	885	840
UNTR	Negative	Overbought	Positive	Sell	24,625	24,425	24,200	24,850	25,050	23,825
UNVR	Positive	Trading	Positive	Spec. Buy	2,735	2,705	2,665	2,775	2,805	2,625

## OUR TEAM

**Sukarno Alatas**

Head of Equity Research

[sukarno@kiwoom.co.id](mailto:sukarno@kiwoom.co.id) | 021 5010 5800**Abdul Azis Setyo Wibowo**

Equity Research Analyst

[azis@kiwoom.co.id](mailto:azis@kiwoom.co.id) | 021 5010 5800**Miftahul Khaer**

Equity Research Analyst

[khaer.miftahul@kiwoom.co.id](mailto:khaer.miftahul@kiwoom.co.id) | 021 5010 5800**Vicky Rosalinda**

Equity Research Analyst

[vicky.rosalinda@kiwoom.co.id](mailto:vicky.rosalinda@kiwoom.co.id) | 021 5010 5800**Wahyu Saputra**

Research Associate

[wahyu.saputra@kiwoom.co.id](mailto:wahyu.saputra@kiwoom.co.id) | 021 5010 5800**OTHER DISCLOSURES**

All Kiwoom's research reports made available to clients are simultaneously available on our own website <http://www.kiwoom.co.id/>. Not all research content is redistributed, e-mailed or made available to third-party aggregators. For all research reports available on a particular stock, please contact your sales representative. Any data discrepancies in this report could be the result of different calculations and/or adjustments.

**DISCLAIMER** This report has been prepared and issued by PT Kiwoom Sekuritas Indonesia. Information has been obtained from sources believed to be reliable but Kiwoom Securities do not warrant its completeness or accuracy. Forward-looking information or statements in this report contain information that is based on forecast of future results, estimates of amounts not yet determinable, assumptions, and therefore involve known and unknown risks and uncertainties which may cause the actual results, performance or achievements of their subject matter to be materially different from current expectations.

To the fullest extent allowed by law, PT Kiwoom Sekuritas Indonesia shall not be liable for any direct, indirect or consequential losses, loss of profits, damages, costs or expenses incurred or suffered by any person or organization arising from reliance on or use of any information contained on this report. The information that we provide should not be construed in any manner whatsoever as, personalized advice.

No mention of a particular security in this report constitutes a recommendation to buy, sell or hold that or any security, or that any particular security, portfolio of securities, transaction or investment strategy is suitable for any specific person. This report is being supplied to you solely for your information and may not be reproduced by, further distributed to or published in whole or in part by, any other person.