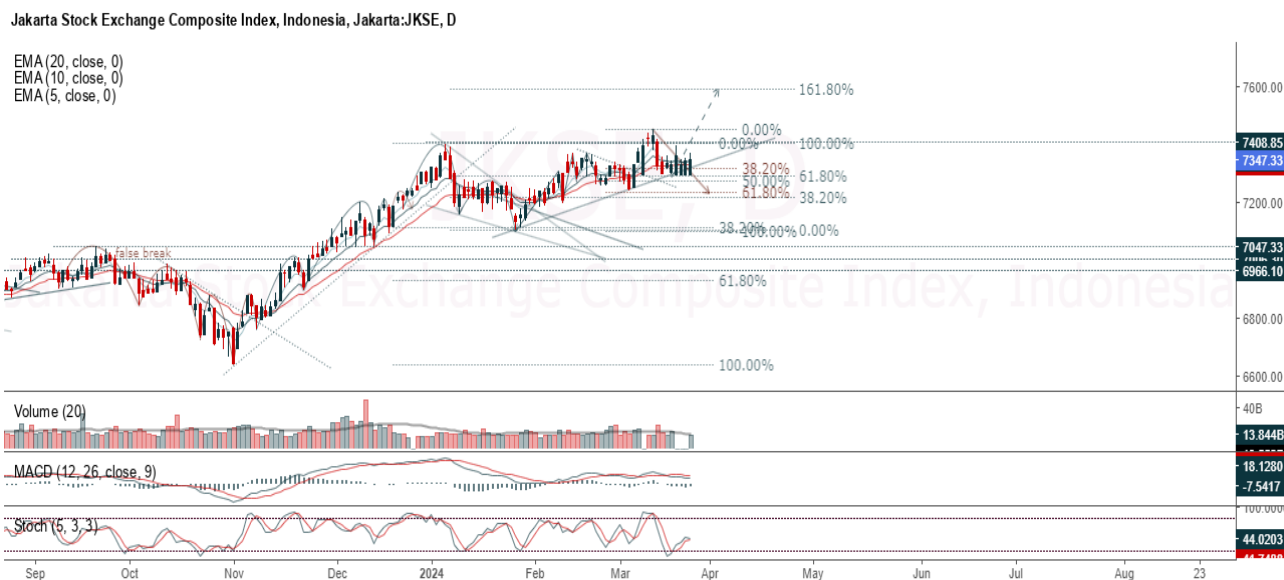


JCI Range Today 7,316 – 7,330 (Support), 7,396 – 7,416 (Resistance)



Jakarta Composite Index, Price closed negative with bearish candle. Indicator from stochastic is still bullish, MACD histogram is moving positive direction (line is golden cross potential) and volume is neutral. Bearish scenario: If it moves bearish again, JCI is expected to weaken again to the support range of 7,316 – 7,330. Bullish scenario: If JCI is able to move bullish, JCI has the opportunity to break resistance 7,396 – 7,416.

Stock Pick Today: ADMR, BNGA, CMRY, TPIA

ADMR

Adaro Minerals Indonesia Tbk PT, Indonesia, Jakarta:ADMR, D

EMA (13, close, 0)
EMA (34, close, 0)



(ADMR). Price closed higher with bullish candle. Price has the opportunity strengthen to the nearest resistance. Stochastic is golden cross, MACD histogram is moving positive direction (line is golden cross potential) and volume is increasing. Confirm buy if the next candle returns bullish or buy on support if it goes down first. Be careful if you fail to stay above the support level or become a support breakdown.

(Trading Buy)

TRADING STRATEGY:

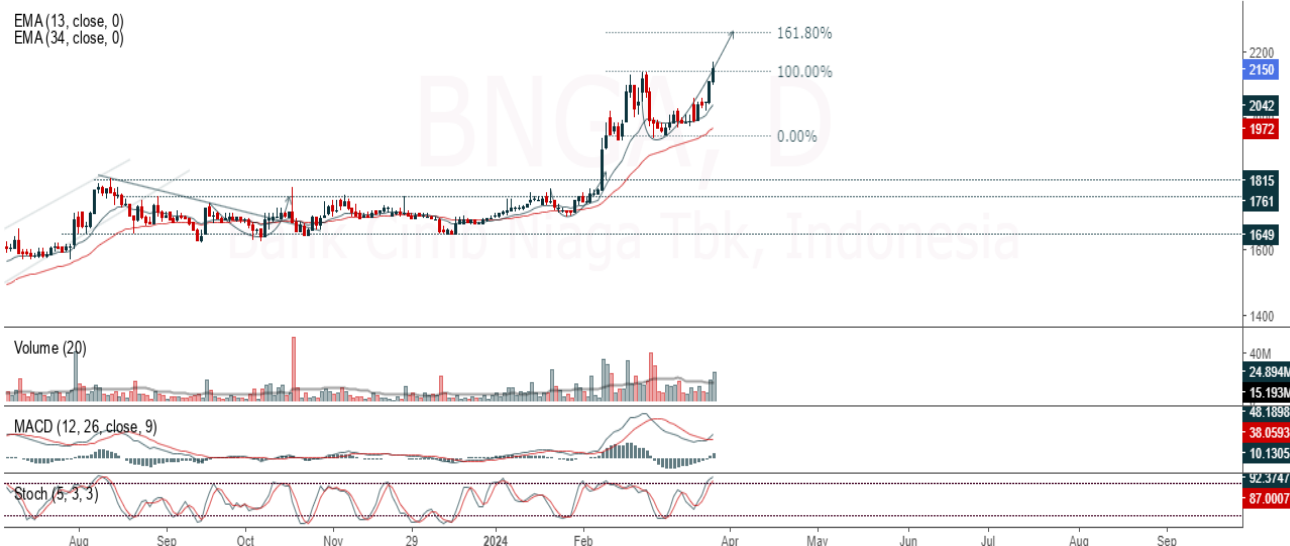
1. **Target Price:** The price has a bullish opportunity to test the resistance level 1,380. If it breaks level 1,380 then the price will go to level 1,410. We recommend to be careful if the price fails to break through or turn around the support area.

2. **Stop Loss:** To minimize the risk of loss, we recommend placing a stop loss at level 1,305.

Entry Buy : 1,325 – 1,345
Target Price : 1,380 – 1,410
Support : 1,310 – 1,325
Cut loss : 1,305

BNGA

Bank Cimb Niaga Tbk, Indonesia, Jakarta:BNGA, D



(BNGA). Price closed higher and breakout resistance. Price has the opportunity strengthen to the next resistance. Stochastic is still bullish, MACD histogram is moving positive (line is bullish) and volume is increasing. Confirm buy if the next candle returns bullish or buy on support if it goes down first. Be careful if you fail to stay above the support level or become a support breakdown. **(Trading Buy)**

TRADING STRATEGY:

1. Target Price: The price has a bullish opportunity to test the resistance level 2,190. If it breaks level 2,190 then the price will go to level 2,230. We recommend to be careful if the price fails to break through or turn around the support area.

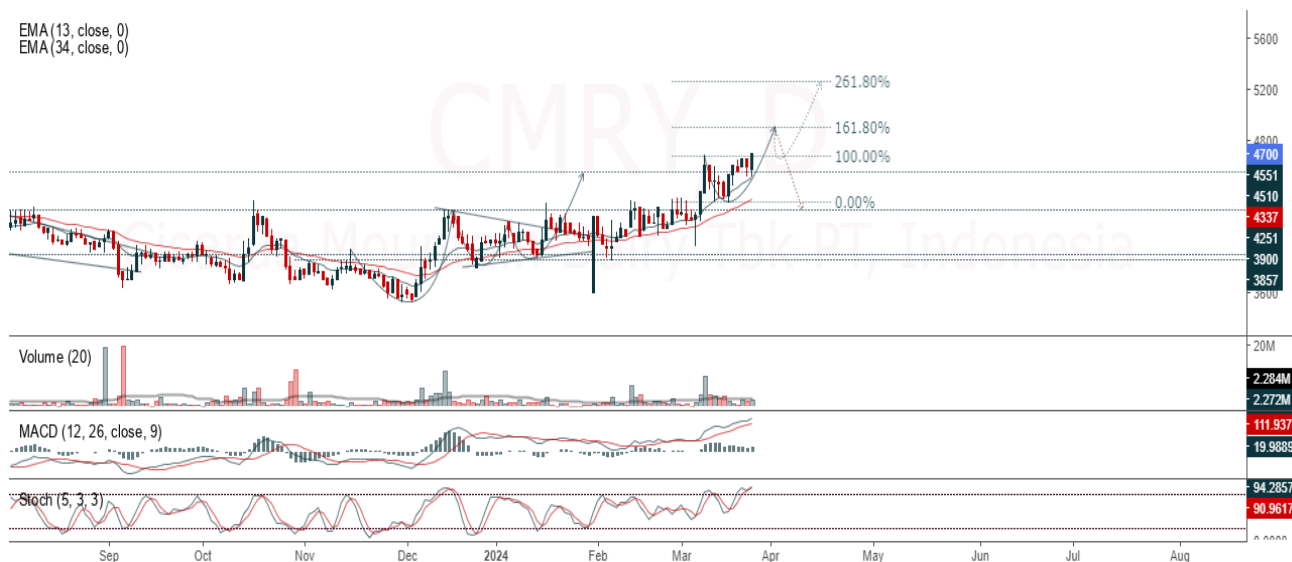
2. Stop Loss: To minimize the risk of loss, we recommend placing a stop loss at level 2,100.

Entry Buy : 2,130 – 2,150
Target Price : 2,190 – 2,230
Support : 2,110 – 2,130
Cut loss : 2,100

CMRY

Cisarua Mountain Dairy Tbk PT, Indonesia, Jakarta:CMRY, D

EMA (13, close, 0)
EMA (34, close, 0)



(CMRY). Price closed higher and breakout resistance. Price has the opportunity strengthen to the next resistance. Stochastic is bullish, MACD histogram is moving positive (line is bullish) and volume is increasing. Confirm buy if the next candle returns bullish or buy on support if it goes down first. Be careful if you fail to stay above the support level or become a support breakdown. **(Trading Buy)**

TRADING STRATEGY:

1. Target Price: The price has a bullish opportunity to test the resistance level 4,750. If it breaks level 4,750 then the price will go to level 4,800. We recommend to be careful if the price fails to break through or turn around the support area.
2. Stop Loss: To minimize the risk of loss, we recommend placing a stop loss at level 4,640.

Entry Buy : 4,670 – 4,700
Target Price : 4,750 – 4,800
Support : 4,650 – 4,670
Cut loss : 4,640

TPIA

Chandra Asri Petrochemical Tbk, Indonesia, Jakarta:TPIA, D

EMA (13, close, 0)
EMA (34, close, 0)



(TPIA). Price closed higher and breakout resistance. Price has the opportunity to continue strengthening to the nearest resistance. Stochastic is still bullish, MACD histogram is moving positive (line is bullish) and volume is neutral. Confirm buy if the next candle returns bullish or buy on support if it goes down first. Be careful if you fail to stay above the support level or become a support breakdown. **(Trading Buy)**

TRADING STRATEGY:

1. **Target Price:** The price has a bullish opportunity to test the resistance level 6,125. If it breaks level 6,125 then the price will go to level 6,275. We recommend to be careful if the price fails to break through or turn around the support area.

2. **Stop Loss:** To minimize the risk of loss, we recommend placing a stop loss at level 6,000.

Entry Buy : 6,075 – 6,100
Target Price : 6,125 – 6,275
Support : 6,025 – 6,075
Cut loss : 6,000

Forecast – Technical Analysis

Ticker	MA5	RSI Rec	MACD Trend	Recomm.	Pivot Point	Support		Resistance		Stop Loss Level
						1	2	1	2	
JCI	Negative	Trading	Negative	Sell	7,350	7,325	7,300	7,375	7,400	7,200
ACES	Negative	Overbought	Positive	Sell	925	920	905	940	945	890
ADRO	Negative	Overbought	Positive	Sell	2,710	2,670	2,630	2,750	2,790	2,590
AKRA	Positive	Trading	Negative	Hold	1,735	1,720	1,705	1,750	1,765	1,675
AMRT	Negative	Overbought	Positive	Sell	2,905	2,890	2,875	2,920	2,935	2,830
ANTM	Negative	Overbought	Positive	Sell	1,665	1,650	1,640	1,675	1,690	1,615
ARTO	Negative	Trading	Positive	Hold	2,800	2,755	2,720	2,835	2,880	2,675
ASII	Negative	Trading	Positive	Hold	5,325	5,275	5,200	5,400	5,450	5,125
BBCA	Positive	Trading	Negative	Hold	10,000	9,950	9,900	10,050	10,100	9,750
BBNI	Negative	Trading	Negative	Sell	5,925	5,875	5,825	5,975	6,025	5,725
BBRI	Negative	Trading	Negative	Sell	6,250	6,200	6,150	6,300	6,350	6,050
BBTN	Negative	Overbought	Positive	Sell	1,590	1,570	1,540	1,620	1,640	1,515
BMRI	Positive	Trading	Negative	Hold	7,175	7,100	7,075	7,200	7,275	6,950
BRIS	Negative	Overbought	Negative	Strong Sell	2,670	2,655	2,620	2,705	2,720	2,580
BRPT	Negative	Trading	Positive	Hold	975	960	950	985	1,000	935
BUKA	Negative	Oversold	Positive	Spec. Buy	147	143	140	150	154	138
CPIN	Positive	Overbought	Positive	Hold	5,225	5,175	5,075	5,325	5,375	5,000
EMTK	Negative	Trading	Positive	Hold	439	436	431	444	447	425
ESSA	Negative	Overbought	Positive	Sell	655	630	615	670	695	605
EXCL	Positive	Trading	Negative	Hold	2,415	2,375	2,355	2,435	2,475	2,315
GGRM	Negative	Trading	Negative	Sell	19,975	19,775	19,625	20,125	20,325	19,325
GOTO	Positive	Trading	Positive	Spec. Buy	70	68	67	71	73	66
HRUM	Positive	Trading	Positive	Spec. Buy	1,345	1,330	1,305	1,370	1,385	1,285
ICBP	Negative	Trading	Positive	Hold	10,700	10,375	10,050	11,025	11,350	9,875
INCO	Positive	Trading	Positive	Spec. Buy	4,085	4,055	4,025	4,115	4,145	3,960
INDF	Negative	Trading	Negative	Sell	6,350	6,300	6,175	6,475	6,525	6,075
INKP	Negative	Overbought	Positive	Sell	9,725	9,550	9,375	9,900	10,075	9,225
INTP	Negative	Trading	Negative	Sell	8,700	8,675	8,600	8,775	8,800	8,475
ITMG	Negative	Overbought	Positive	Sell	27,825	27,750	27,675	27,900	27,975	27,250
KLBF	Negative	Trading	Positive	Hold	1,515	1,495	1,480	1,530	1,550	1,460
MAPI	Positive	Oversold	Negative	Spec. Buy	1,820	1,810	1,795	1,835	1,845	1,765
MBMA	Positive	Oversold	Negative	Spec. Buy	486	480	474	492	498	467
MDKA	Negative	Trading	Positive	Hold	2,320	2,285	2,250	2,355	2,390	2,215
MEDC	Positive	Trading	Negative	Hold	1,445	1,410	1,395	1,460	1,495	1,370
MTEL	Negative	Oversold	Positive	Spec. Buy	615	610	605	620	625	595
PGAS	Negative	Overbought	Positive	Sell	1,345	1,330	1,310	1,365	1,380	1,290
PGEO	Negative	Trading	Positive	Hold	1,190	1,190	1,180	1,200	1,200	1,165
PTBA	Negative	Overbought	Positive	Sell	2,930	2,910	2,880	2,960	2,980	2,835
PTMP	Positive	Oversold	Negative	Spec. Buy	178	173	165	186	191	163
SIDO	Negative	Trading	Negative	Sell	620	615	610	625	630	600
SMGR	Negative	Trading	Negative	Sell	5,825	5,775	5,700	5,900	5,950	5,600
SRTG	Negative	Oversold	Negative	Spec. Buy	1,465	1,460	1,445	1,480	1,485	1,425
TLKM	Positive	Oversold	Negative	Spec. Buy	3,635	3,590	3,565	3,660	3,705	3,510
TOWR	Negative	Trading	Negative	Sell	865	860	850	875	880	835
UNTR	Negative	Overbought	Positive	Sell	24,425	24,225	24,000	24,650	24,850	23,650
UNVR	Negative	Trading	Positive	Hold	2,760	2,745	2,720	2,785	2,800	2,675

OUR TEAM

Sukarno Alatas

Head of Equity Research

sukarno@kiwoom.co.id | 021 5010 5800

Abdul Azis Setyo Wibowo

Equity Research Analyst

azis@kiwoom.co.id | 021 5010 5800

Miftahul Khaer

Equity Research Analyst

khaer.miftahul@kiwoom.co.id | 021 5010 5800

Vicky Rosalinda

Equity Research Analyst

vicky.rosalinda@kiwoom.co.id | 021 5010 5800

Wahyu Saputra

Research Associate

wahyu.saputra@kiwoom.co.id | 021 5010 5800



OTHER DISCLOSURES

All Kiwoom's research reports made available to clients are simultaneously available on our own website <http://www.kiwoom.co.id/>. Not all research content is redistributed, e-mailed or made available to third-party aggregators. For all research reports available on a particular stock, please contact your sales representative. Any data discrepancies in this report could be the result of different calculations and/or adjustments.

DISCLAIMER This report has been prepared and issued by PT Kiwoom Sekuritas Indonesia. Information has been obtained from sources believed to be reliable but Kiwoom Securities do not warrant its completeness or accuracy. Forward-looking information or statements in this report contain information that is based on forecast of future results, estimates of amounts not yet determinable, assumptions, and therefore involve known and unknown risks and uncertainties which may cause the actual results, performance or achievements of their subject matter to be materially different from current expectations.

To the fullest extent allowed by law, PT Kiwoom Sekuritas Indonesia shall not be liable for any direct, indirect or consequential losses, loss of profits, damages, costs or expenses incurred or suffered by any person or organization arising from reliance on or use of any information contained on this report. The information that we provide should not be construed in any manner whatsoever as, personalized advice.

No mention of a particular security in this report constitutes a recommendation to buy, sell or hold that or any security, or that any particular security, portfolio of securities, transaction or investment strategy is suitable for any specific person. This report is being supplied to you solely for your information and may not be reproduced by, further distributed to or published in whole or in part by, any other person.