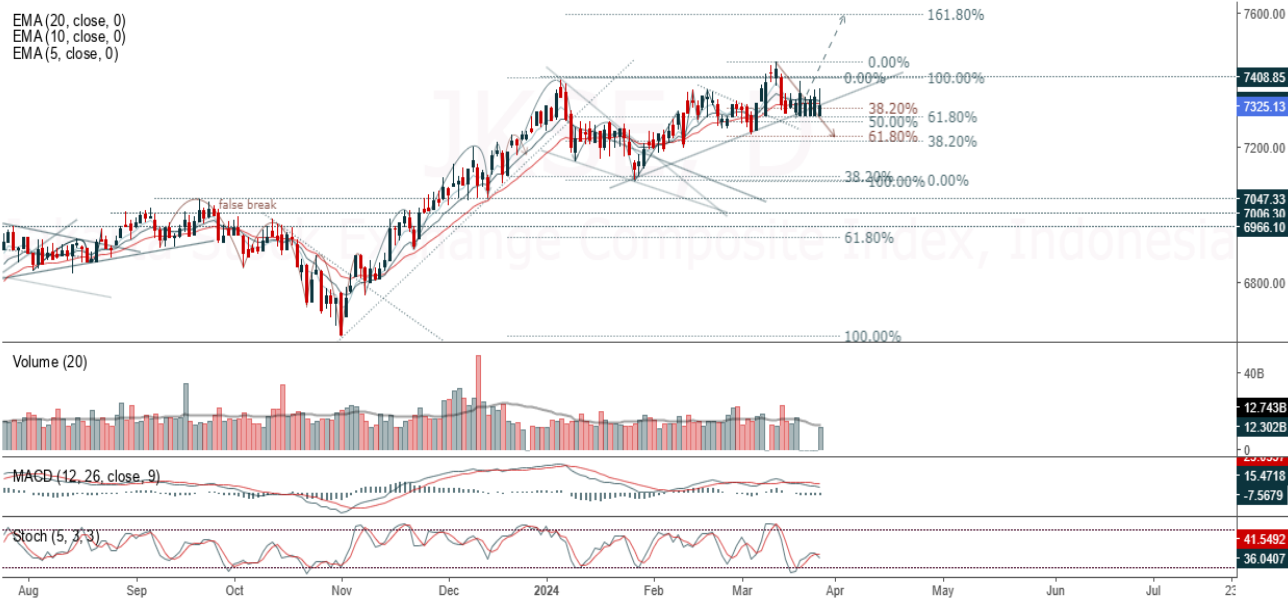


**JCI Range Today 7,255 – 7,277 (Support), 7,343 – 7,365 (Resistance)**

Jakarta Stock Exchange Composite Index, Indonesia, Jakarta:JKSE, D



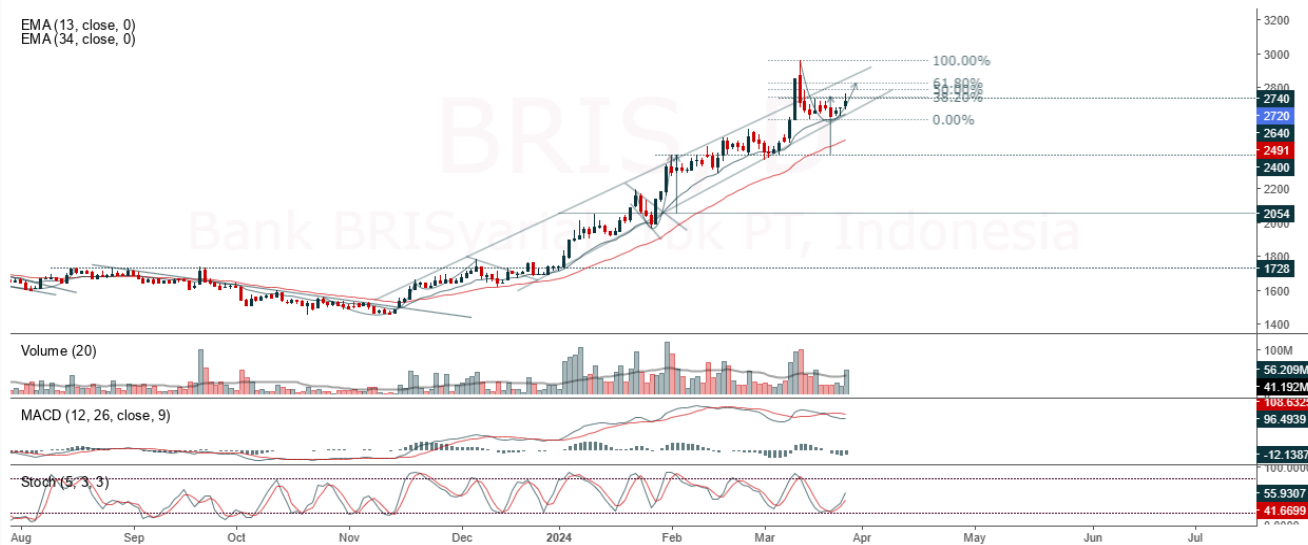
**Jakarta Composite Index**, Price closed negative and breakdown support minor trend. Indicator from stochastic is death cross, MACD histogram is moving negative (line is sloping) and volume is neutral. Bearish scenario: If it moves bearish again, JCI is expected to weaken again to the support range of 7,255 – 7,277. Bullish scenario: If JCI is able to move bullish, JCI has the opportunity to break resistance 7,343 – 7,365.

**Stock Pick Today: BRIS, JSMR, RAJA, ULTJ**

**BRIS**

Bank BRISyariah Tbk PT, Indonesia, Jakarta:BRIS, D

EMA (13, close, 0)  
EMA (34, close, 0)



**(BRIS).** Price closed higher and testing harmonic resistance (FR 38.20%). Price is expected to test the nearest resistance and continue strengthening to the next resistance. Stochastic is still bullish, MACD histogram is moving positive direction (line is slopping) and volume is increasing. Confirm buy if the next candle returns bullish or buy on support if it goes down first. Be careful if you fail to stay above the support level or become a support breakdown. **(Trading Buy)**

**TRADING STRATEGY:**

1. **Target Price:** The price has a bullish opportunity to test the resistance level 2,780. If it breaks level 2,780 then the price will go to level 2,850. We recommend to be careful if the price fails to break through or turn around the support area.

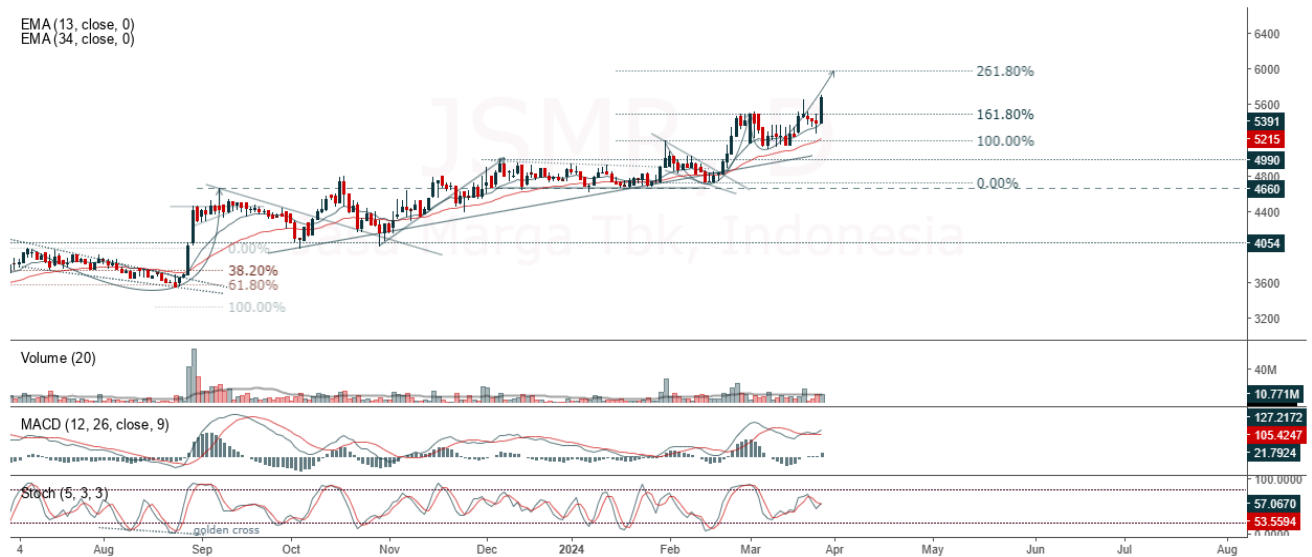
2. **Stop Loss:** To minimize the risk of loss, we recommend placing a stop loss at level 2,630.

Entry Buy : 2,680 – 2,720  
 Target Price : 2,780 – 2,850  
 Support : 2,640 – 2,680  
 Cut loss : 2,630

**JSMR**

Jasa Marga Tbk, Indonesia, Jakarta:JSMR, D

EMA (13, close, 0)  
EMA (34, close, 0)



**(JSMR).** Price closed higher and breakout resistance. Price has the opportunity strengthen to the next resistance. Stochastic is golden cross, MACD histogram is moving positive (line is bullish) and volume is increasing. Confirm buy if the next candle returns bullish or buy on support if it goes down first. Be careful if you fail to stay above the support level or become a support breakdown. **(Trading Buy)**

**TRADING STRATEGY:**

1. Target Price: The price has a bullish opportunity to test the resistance level 5,800. If it breaks level 5,800 then the price will go to level 5,900. We recommend to be careful if the price fails to break through or turn around the support area.
2. Stop Loss: To minimize the risk of loss, we recommend placing a stop loss at level 5,500.

Entry Buy : 5,575 – 5,675  
Target Price : 5,800 – 5,900  
Support : 5,525 – 5,575  
Cut loss : 5,500

**RAJA**

Rukun Raharja Tbk, Indonesia, Jakarta:RAJA, D

EMA (13, close, 0)  
EMA (34, close, 0)



**(RAJA).** Price closed positive and breakup trendline resistance. Price has the opportunity strengthen to the nearest resistance. Stochastic is golden cross, MACD histogram is moving positive (line is bullish) and volume is increasing significantly. Confirm buy if the next candle returns bullish or buy on support if it goes down first. Be careful if you fail to stay above the support level or become a support breakdown. **(Trading Buy)**

**TRADING STRATEGY:**

1. Target Price: The price has a bullish opportunity to test the resistance level 1,410. If it breaks level 1,410 then the price will go to level 1,440. We recommend to be careful if the price fails to break through or turn around the support area.

2. Stop Loss: To minimize the risk of loss, we recommend placing a stop loss at level 1,350.

Entry Buy : 1,370 – 1,385  
Target Price : 1,410 – 1,440  
Support : 1,355 – 1,370  
Cut loss : 1,350

**ULTJ**

Ultra Jaya Milk Industry Tbk, Indonesia, Jakarta:ULTJ, D

EMA (34, close, 0)  
EMA (13, close, 0)



**(ULTJ).** Price closed positive and testing support. Price has the opportunity strengthen to the nearest resistance. Stochastic is still bullish, MACD histogram is moving positive (line is bullish) and volume is neutral. Confirm buy if the next candle returns bullish or buy on support if it goes down first. Be careful if you fail to stay above the support level or become a support breakdown. **(Trading Buy)**

**TRADING STRATEGY:**

1. **Target Price:** The price has a bullish opportunity to test the resistance level 1,900. If it breaks level 1,900 then the price will go to level 1,925. We recommend to be careful if the price fails to break through or turn around the support area.

2. **Stop Loss:** To minimize the risk of loss, we recommend placing a stop loss at level 1,835.

Entry Buy : 1,855 – 1,870  
Target Price : 1,900 – 1,925  
Support : 1,840 – 1,855  
Cut loss : 1,835

## Forecast – Technical Analysis

Ticker	MA5	RSI Rec	MACD Trend	Recomm.	Pivot Point	Support		Resistance		Stop Loss Level
						1	2	1	2	
JCI	Negative	Trading	Negative	Sell	7,325	7,300	7,250	7,375	7,425	7,150
ACES	Positive	Overbought	Positive	Hold	920	905	895	930	945	880
ADRO	Negative	Overbought	Positive	Sell	2,735	2,705	2,685	2,755	2,785	2,640
AKRA	Positive	Trading	Negative	Hold	1,700	1,680	1,630	1,750	1,770	1,605
AMRT	Negative	Overbought	Positive	Sell	2,900	2,870	2,840	2,930	2,960	2,795
ANTM	Negative	Overbought	Positive	Sell	1,650	1,625	1,600	1,675	1,700	1,575
ARTO	Negative	Trading	Positive	Hold	2,775	2,720	2,675	2,820	2,875	2,635
ASII	Negative	Trading	Positive	Hold	5,300	5,250	5,225	5,325	5,375	5,125
BBCA	Positive	Trading	Negative	Hold	10,050	10,025	9,975	10,100	10,125	9,825
BBNI	Negative	Trading	Negative	Sell	5,950	5,900	5,875	5,975	6,025	5,775
BBRI	Negative	Overbought	Negative	Strong Sell	6,275	6,225	6,175	6,325	6,375	6,075
BBTN	Negative	Overbought	Positive	Sell	1,590	1,575	1,550	1,615	1,630	1,530
BMRI	Negative	Trading	Negative	Sell	7,200	7,150	7,125	7,225	7,275	7,025
BRIS	Negative	Overbought	Negative	Strong Sell	2,710	2,660	2,620	2,750	2,800	2,580
BRPT	Negative	Trading	Positive	Hold	960	945	930	975	990	915
BUKA	Negative	Trading	Positive	Hold	152	146	140	158	164	137
CPIN	Positive	Trading	Positive	Spec. Buy	5,175	5,125	5,025	5,275	5,325	4,955
EMTK	Negative	Trading	Positive	Hold	437	430	425	442	449	419
ESSA	Negative	Overbought	Positive	Sell	665	645	630	680	700	620
EXCL	Positive	Trading	Negative	Hold	2,330	2,240	2,110	2,460	2,550	2,080
GGRM	Negative	Trading	Positive	Hold	20,050	19,925	19,850	20,125	20,250	19,550
GOTO	Negative	Trading	Positive	Hold	68	66	65	69	71	64
HRUM	Negative	Trading	Positive	Hold	1,360	1,330	1,300	1,390	1,420	1,280
ICBP	Positive	Trading	Negative	Hold	10,975	10,800	10,700	11,075	11,250	10,550
INCO	Negative	Trading	Negative	Sell	4,060	4,025	3,990	4,095	4,130	3,930
INDF	Positive	Trading	Negative	Hold	6,325	6,300	6,225	6,400	6,425	6,150
INKP	Negative	Overbought	Positive	Sell	9,750	9,650	9,450	9,950	10,050	9,325
INTP	Negative	Trading	Positive	Hold	8,725	8,675	8,600	8,800	8,850	8,475
ITMG	Negative	Overbought	Positive	Sell	28,125	27,800	27,500	28,425	28,750	27,075
KLBF	Negative	Trading	Positive	Hold	1,490	1,460	1,435	1,515	1,545	1,410
MAPI	Positive	Oversold	Negative	Spec. Buy	1,815	1,790	1,770	1,835	1,860	1,740
MBMA	Negative	Oversold	Negative	Spec. Buy	486	477	470	493	500	462
MDKA	Negative	Trading	Positive	Hold	2,290	2,265	2,250	2,305	2,330	2,215
MEDC	Positive	Overbought	Negative	Sell	1,440	1,415	1,390	1,465	1,490	1,370
MTEL	Negative	Oversold	Positive	Spec. Buy	615	610	600	625	630	590
PGAS	Negative	Overbought	Positive	Sell	1,350	1,330	1,315	1,365	1,385	1,295
PGEO	Negative	Trading	Positive	Hold	1,190	1,180	1,170	1,200	1,210	1,150
PTBA	Negative	Overbought	Positive	Sell	2,950	2,935	2,930	2,955	2,970	2,885
PTMP	Positive	Oversold	Negative	Spec. Buy	189	181	173	197	205	170
SIDO	Positive	Trading	Negative	Hold	625	615	610	630	640	600
SMGR	Negative	Trading	Positive	Hold	5,875	5,825	5,725	5,975	6,025	5,650
SRTG	Negative	Oversold	Negative	Spec. Buy	1,460	1,445	1,435	1,470	1,485	1,415
TLKM	Positive	Oversold	Negative	Spec. Buy	3,555	3,480	3,415	3,620	3,695	3,365
TOWR	Negative	Trading	Negative	Sell	865	855	845	875	885	830
UNTR	Negative	Trading	Positive	Hold	24,550	24,400	24,300	24,650	24,800	23,925
UNVR	Positive	Trading	Positive	Spec. Buy	2,740	2,705	2,690	2,755	2,790	2,645

## OUR TEAM

**Sukarno Alatas**

Head of Equity Research

[sukarno@kiwoom.co.id](mailto:sukarno@kiwoom.co.id) | 021 5010 5800

**Abdul Azis Setyo Wibowo**

Equity Research Analyst

[azis@kiwoom.co.id](mailto:azis@kiwoom.co.id) | 021 5010 5800

**Miftahul Khaer**

Equity Research Analyst

[khaer.miftahul@kiwoom.co.id](mailto:khaer.miftahul@kiwoom.co.id) | 021 5010 5800

**Vicky Rosalinda**

Equity Research Analyst

[vicky.rosalinda@kiwoom.co.id](mailto:vicky.rosalinda@kiwoom.co.id) | 021 5010 5800

**Wahyu Saputra**

Research Associate

[wahyu.saputra@kiwoom.co.id](mailto:wahyu.saputra@kiwoom.co.id) | 021 5010 5800



### OTHER DISCLOSURES

All Kiwoom's research reports made available to clients are simultaneously available on our own website <http://www.kiwoom.co.id/>. Not all research content is redistributed, e-mailed or made available to third-party aggregators. For all research reports available on a particular stock, please contact your sales representative. Any data discrepancies in this report could be the result of different calculations and/or adjustments.

**DISCLAIMER** This report has been prepared and issued by PT Kiwoom Sekuritas Indonesia. Information has been obtained from sources believed to be reliable but Kiwoom Securities do not warrant its completeness or accuracy. Forward-looking information or statements in this report contain information that is based on forecast of future results, estimates of amounts not yet determinable, assumptions, and therefore involve known and unknown risks and uncertainties which may cause the actual results, performance or achievements of their subject matter to be materially different from current expectations.

To the fullest extent allowed by law, PT Kiwoom Sekuritas Indonesia shall not be liable for any direct, indirect or consequential losses, loss of profits, damages, costs or expenses incurred or suffered by any person or organization arising from reliance on or use of any information contained on this report. The information that we provide should not be construed in any manner whatsoever as, personalized advice.

No mention of a particular security in this report constitutes a recommendation to buy, sell or hold that or any security, or that any particular security, portfolio of securities, transaction or investment strategy is suitable for any specific person. This report is being supplied to you solely for your information and may not be reproduced by, further distributed to or published in whole or in part by, any other person.