

JCI Range Today 7,036 – 7,066 (Support), 7,191 – 7,234 (Resistance)

Jakarta Stock Exchange Composite Index, Indonesia, Jakarta:JKSE, D



Jakarta Composite Index, Price closed positive and testing resistance. Indicator from stochastic is death cross, MACD histogram is moving positive (line is flat) and volume is increasing. Bearish scenario: If it moves bearish again, JCI is expected to weaken again to the support range of 7,036 – 7,066. Bullish scenario: If JCI is able to move bullish, JCI has the opportunity to break resistance 7,191 – 7,234.

Stock Pick Today: ASSA, CPIN, GOTO, PGAS

ASSA

Adi Sarana Armada Tbk, Indonesia, Jakarta:ASSA, D



(ASSA). Price closed higher and breakout resistance. Price has the opportunity strengthen to the next resistance. Stochastic is still bullish, MACD histogram is moving positive (line is golden cross) and volume is increasing significantly. Confirm buy if the next candle returns bullish or buy on support if it goes down first. Be careful if you fail to stay above the support level or become a support breakdown.

(Trading Buy)

TRADING STRATEGY:

1. **Target Price:** The price has a bullish opportunity to test the resistance level 805. If it breaks level 805 then the price will go to level 820. We recommend to be careful if the price fails to break through or turn around the support area.

2. **Stop Loss:** To minimize the risk of loss, we recommend placing a stop loss at level 760.

Entry Buy : 770 – 785
 Target Price : 805 – 820
 Support : 765 – 770
 Cut loss : 760

CPIN

Charoen Pokphand Indonesia TBK PT, Indonesia, Jakarta:CPIN, D

EMA (13, close, 0)
EMA (34, close, 0)



(CPIN). Price closed higher and breakup trendline resistance. Price is expected to test the nearest resistance and continue strengthening to the next resistance. Stochastic is bullish, MACD histogram is moving positive direction (line is golden cross potential) and volume is decreasing. Confirm buy if the next candle returns bullish or buy on support if it goes down first. Be careful if you fail to stay above the support level or become a support breakdown. **(Trading Buy)**

TRADING STRATEGY:

1. Target Price: The price has a bullish opportunity to test the resistance level 5,075. If it breaks level 5,075 then the price will go to level 5,175. We recommend to be careful if the price fails to break through or turn around the support area.
2. Stop Loss: To minimize the risk of loss, we recommend placing a stop loss at level 4,910.

Entry Buy : 4,950 – 5,000
Target Price : 5,075 – 5,175
Support : 4,920 – 4,950
Cut loss : 4,910

GOTO

GoTo Gojek Tokopedia PT, Indonesia, Jakarta:GOTO, D

EMA (13, close, 0)
EMA (34, close, 0)



(GOTO). Price closed higher and breakout resistance. Price has the opportunity strengthen to the next resistance. Stochastic is bullish, MACD histogram is moving positive (line is bullish) and volume is increasing. Confirm buy if the next candle returns bullish or buy on support if it goes down first. Be careful if you fail to stay above the support level or become a support breakdown. **(Trading Buy)**

TRADING STRATEGY:

1. Target Price: The price has a bullish opportunity to test the resistance level 68. If it breaks level 68 then the price will go to level 69. We recommend to be careful if the price fails to break through or turn around the support area.

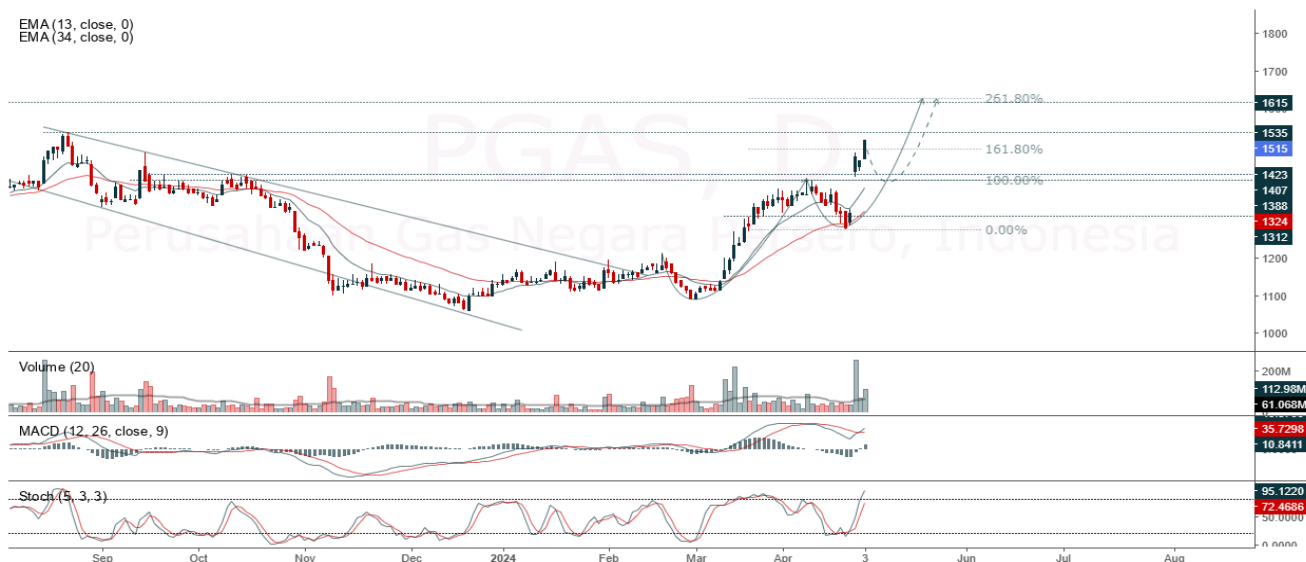
2. Stop Loss: To minimize the risk of loss, we recommend placing a stop loss at level 63.

Entry Buy : 65 – 66
Target Price : 68 – 69
Support : 64 – 65
Cut loss : 63

PGAS

Perusahaan Gas Negara Persero, Indonesia, Jakarta:PGAS, D

EMA (13, close, 0)
EMA (34, close, 0)



(PGAS). Price closed higher and breakup dynamic resistance (FR 161.80%). Price has the opportunity strengthen to the next resistance. Stochastic is still bullish, MACD histogram is moving positive (line is bullish) and volume is increasing. Confirm buy if the next candle returns bullish or buy on support if it goes down first. Be careful if you fail to stay above the support level or become a support breakdown. **(Trading Buy)**

TRADING STRATEGY:

1. Target Price: The price has a bullish opportunity to test the resistance level 1,555. If it breaks level 1,555 then the price will go to level 1,575. We recommend to be careful if the price fails to break through or turn around the support area.
2. Stop Loss: To minimize the risk of loss, we recommend placing a stop loss at level 1,480.

Entry Buy : 1,495 – 1,515
Target Price : 1,555 – 1,575
Support : 1,485 – 1,495
Cut loss : 1,480

Forecast – Technical Analysis

Ticker	MA5	RSI Rec	MACD Trend	Recomm.	Pivot Point	Support		Resistance		Stop Loss Level
						1	2	1	2	
JCI	Positive	Trading	Positive	Spec. Buy	7,125	7,100	7,075	7,175	7,200	6,950
ACES	Positive	Trading	Negative	Hold	900	870	845	925	955	830
ADRO	Negative	Trading	Negative	Sell	2,725	2,710	2,685	2,750	2,765	2,645
AKRA	Positive	Trading	Negative	Hold	1,650	1,635	1,620	1,665	1,680	1,595
AMRT	Negative	Overbought	Positive	Sell	9,750	9,675	9,525	9,900	9,975	9,375
ANTM	Positive	Trading	Positive	Spec. Buy	2,890	2,870	2,850	2,910	2,930	2,805
ARTO	Positive	Oversold	Negative	Spec. Buy	1,505	1,475	1,445	1,535	1,565	1,420
ASII	Positive	Oversold	Negative	Spec. Buy	2,105	2,055	2,015	2,145	2,195	1,980
BBCA	Negative	Trading	Positive	Hold	5,225	5,200	5,175	5,250	5,275	5,100
BBNI	Positive	Trading	Positive	Spec. Buy	9,775	9,725	9,600	9,900	9,950	9,450
BBRI	Positive	Oversold	Negative	Spec. Buy	4,830	4,775	4,700	4,905	4,960	4,625
BBTN	Positive	Oversold	Negative	Spec. Buy	4,765	4,695	4,645	4,815	4,885	4,575
BMRI	Positive	Oversold	Negative	Spec. Buy	1,275	1,260	1,245	1,290	1,305	1,225
BRIS	Positive	Oversold	Negative	Spec. Buy	6,225	6,050	5,850	6,425	6,600	5,775
BRPT	Positive	Trading	Negative	Hold	2,590	2,525	2,460	2,655	2,720	2,420
BUKA	Negative	Trading	Positive	Hold	995	970	955	1,010	1,035	940
CPIN	Positive	Oversold	Positive	Buy	123	123	121	125	125	119
EMTK	Positive	Trading	Negative	Hold	4,960	4,895	4,815	5,050	5,100	4,740
ESSA	Positive	Overbought	Negative	Sell	765	750	730	785	800	720
EXCL	Negative	Trading	Positive	Hold	2,460	2,420	2,390	2,490	2,530	2,355
GGRM	Positive	Strong Buy	Negative	Buy	17,950	17,875	17,825	18,000	18,075	17,550
GOTO	Negative	Trading	Positive	Hold	65	63	62	66	68	61
HRUM	Negative	Trading	Negative	Sell	1,370	1,345	1,320	1,395	1,420	1,300
ICBP	Positive	Trading	Positive	Spec. Buy	10,625	10,400	10,100	10,925	11,150	9,950
INCO	Negative	Trading	Negative	Sell	4,095	4,040	3,985	4,150	4,205	3,925
INDF	Positive	Trading	Positive	Spec. Buy	6,225	6,175	6,100	6,300	6,350	6,000
INKP	Positive	Trading	Negative	Hold	9,300	9,200	9,125	9,375	9,475	8,975
INTP	Positive	Oversold	Negative	Spec. Buy	7,250	7,100	6,950	7,400	7,550	6,850
ITMG	Positive	Trading	Negative	Hold	10,725	10,575	10,325	10,975	11,125	10,175
KLBF	Positive	Oversold	Negative	Spec. Buy	24,925	24,725	24,525	25,125	25,325	24,175
MAPI	Negative	Trading	Positive	Hold	1,495	1,470	1,440	1,525	1,550	1,415
MBMA	Positive	Oversold	Negative	Spec. Buy	1,470	1,430	1,390	1,510	1,550	1,370
MDKA	Positive	Trading	Positive	Spec. Buy	525	520	510	535	540	500
MEDC	Negative	Trading	Negative	Sell	2,575	2,535	2,495	2,615	2,655	2,455
MTEL	Positive	Oversold	Negative	Spec. Buy	1,315	1,295	1,270	1,340	1,360	1,250
PGAS	Positive	Oversold	Negative	Spec. Buy	565	550	540	575	590	530
PGEO	Negative	Overbought	Positive	Sell	1,490	1,465	1,435	1,520	1,545	1,410
PTBA	Positive	Trading	Positive	Spec. Buy	1,215	1,205	1,200	1,220	1,230	1,180
PTMP	Negative	Trading	Negative	Sell	2,920	2,890	2,860	2,950	2,980	2,815
SIDO	Positive	Overbought	Positive	Hold	715	710	700	725	730	690
SMGR	Positive	Oversold	Negative	Spec. Buy	4,690	4,625	4,570	4,745	4,810	4,500
SRTG	Positive	Trading	Negative	Hold	1,430	1,400	1,370	1,460	1,490	1,350
TLKM	Negative	Oversold	Positive	Spec. Buy	3,160	3,140	3,100	3,200	3,220	3,055
TOWR	Positive	Oversold	Positive	Buy	795	785	775	805	815	765
UNTR	Negative	Trading	Negative	Sell	24,125	23,850	23,550	24,425	24,700	23,200
UNVR	Positive	Trading	Positive	Spec. Buy	2,615	2,580	2,535	2,660	2,695	2,495

OUR TEAM

Sukarno Alatas

Head of Equity Research

sukarno@kiwoom.co.id | 021 5010 5800**Abdul Azis Setyo Wibowo**

Equity Research Analyst

azis@kiwoom.co.id | 021 5010 5800**Miftahul Khaer**

Equity Research Analyst

khaer.miftahul@kiwoom.co.id | 021 5010 5800**Vicky Rosalinda**

Equity Research Analyst

vicky.rosalinda@kiwoom.co.id | 021 5010 5800**Wahyu Saputra**

Research Associate

wahyu.saputra@kiwoom.co.id | 021 5010 5800**OTHER DISCLOSURES**

All Kiwoom's research reports made available to clients are simultaneously available on our own website <http://www.kiwoom.co.id/>. Not all research content is redistributed, e-mailed or made available to third-party aggregators. For all research reports available on a particular stock, please contact your sales representative. Any data discrepancies in this report could be the result of different calculations and/or adjustments.

DISCLAIMER This report has been prepared and issued by PT Kiwoom Sekuritas Indonesia. Information has been obtained from sources believed to be reliable but Kiwoom Securities do not warrant its completeness or accuracy. Forward-looking information or statements in this report contain information that is based on forecast of future results, estimates of amounts not yet determinable, assumptions, and therefore involve known and unknown risks and uncertainties which may cause the actual results, performance or achievements of their subject matter to be materially different from current expectations.

To the fullest extent allowed by law, PT Kiwoom Sekuritas Indonesia shall not be liable for any direct, indirect or consequential losses, loss of profits, damages, costs or expenses incurred or suffered by any person or organization arising from reliance on or use of any information contained on this report. The information that we provide should not be construed in any manner whatsoever as, personalized advice.

No mention of a particular security in this report constitutes a recommendation to buy, sell or hold that or any security, or that any particular security, portfolio of securities, transaction or investment strategy is suitable for any specific person. This report is being supplied to you solely for your information and may not be reproduced by, further distributed to or published in whole or in part by, any other person.