

JCI Range Today 7,026 – 7,052 (Support), 7,137 – 7,159 (Resistance)

Jakarta Stock Exchange Composite Index, Indonesia, Jakarta:JKSE, D

EMA (20, close, 0)
EMA (10, close, 0)
EMA (5, close, 0)



Jakarta Composite Index, Price closed positive with bullish candle. Indicator from stochastic is still bearish, MACD histogram is moving negative direction (line is flat) and volume is decreasing. Bearish scenario: If it moves bearish again, JCI is expected to weaken again to the support range of 7,026 – 7,052. Bullish scenario: If JCI is able to move bullish, JCI has the opportunity to break resistance 7,137 – 7,159.

Stock Pick Today: INKP, MEDC, TLKM, UNVR

INKP

Indah Kiat Pulp & Paper Tbk, Indonesia, Jakarta:INKP, D

EMA (13, close, 0)
EMA (34, close, 0)



(INKP). Price closed higher and breakup dynamic resistance at EMA 10 & 20. Price has the opportunity strengthen to the nearest resistance. Stochastic is neutral, MACD histogram is moving positive direction (line is golden cross potential) and volume is increasing. Confirm buy if the next candle returns bullish or buy on support if it goes down first. Be careful if you fail to stay above the support level or become a support breakdown. **(Trading Buy)**

TRADING STRATEGY:

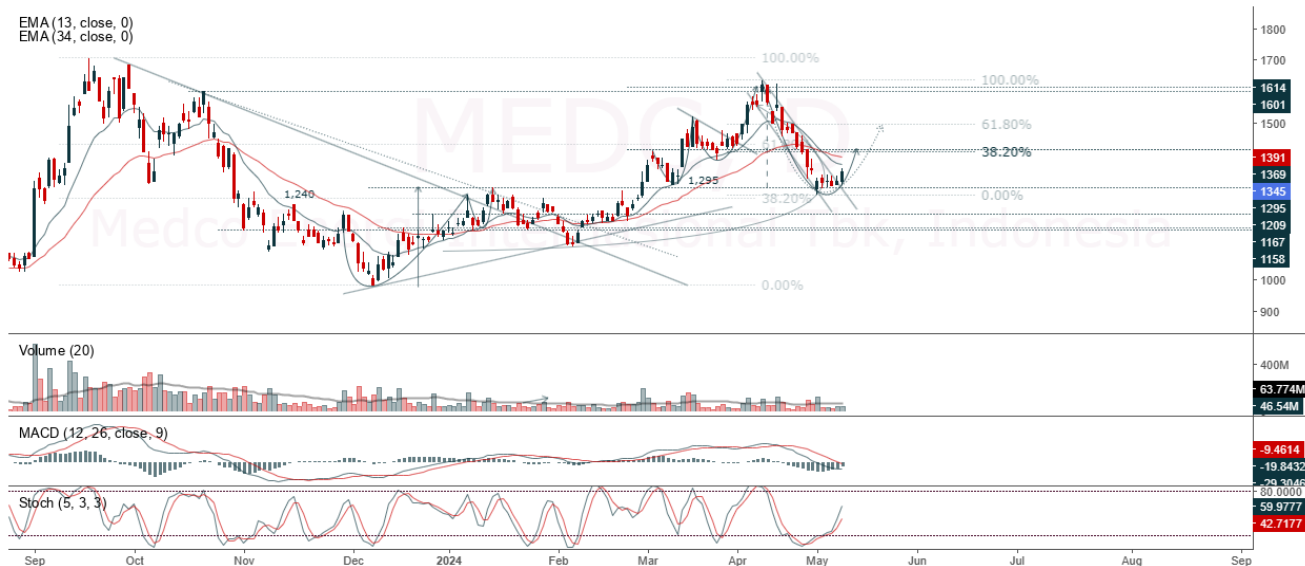
1. **Target Price:** The price has a bullish opportunity to test the resistance level 9,875. If it breaks level 9,875 then the price will go to level 9,975. We recommend to be careful if the price fails to break through or turn around the support area.

2. **Stop Loss:** To minimize the risk of loss, we recommend placing a stop loss at level 9,500.

Entry Buy : 9,575 – 9,675
Target Price : 9,875 – 9,975
Support : 9,525 – 9,575
Cut loss : 9,500

MEDC

Medco Energi Internasional Tbk, Indonesia, Jakarta: MEDC, D



(MEDC). Price closed higher and testing dynamic resistance at EMA 10. Price has the opportunity strengthen to the nearest resistance. Stochastic is still bullish, MACD histogram is moving positive direction (line is golden cross potential) and volume is increasing. Confirm buy if the next candle returns bullish or buy on support if it goes down first. Be careful if you fail to stay above the support level or become a support breakdown. **(Trading Buy)**

TRADING STRATEGY:

1. Target Price: The price has a bullish opportunity to test the resistance level 1,375. If it breaks level 1,375 then the price will go to level 1,400. We recommend to be careful if the price fails to break through or turn around the support area.
2. Stop Loss: To minimize the risk of loss, we recommend placing a stop loss at level 1,310.

Entry Buy : 1,320 – 1,345
Target Price : 1,375 – 1,400
Support : 1,315 – 1,320
Cut loss : 1,310

TLKM

Telkom Indonesia (Persero) Tbk PT, Indonesia, Jakarta:TLKM, D



(TLKM). Price closed higher and breakout resistance. Price has the opportunity strengthen to the next resistance. Stochastic is golden cross potential, MACD histogram is moving positive (line is bullish) and volume is increasing. Confirm buy if the next candle returns bullish or buy on support if it goes down first. Be careful if you fail to stay above the support level or become a support breakdown. **(Trading Buy)**

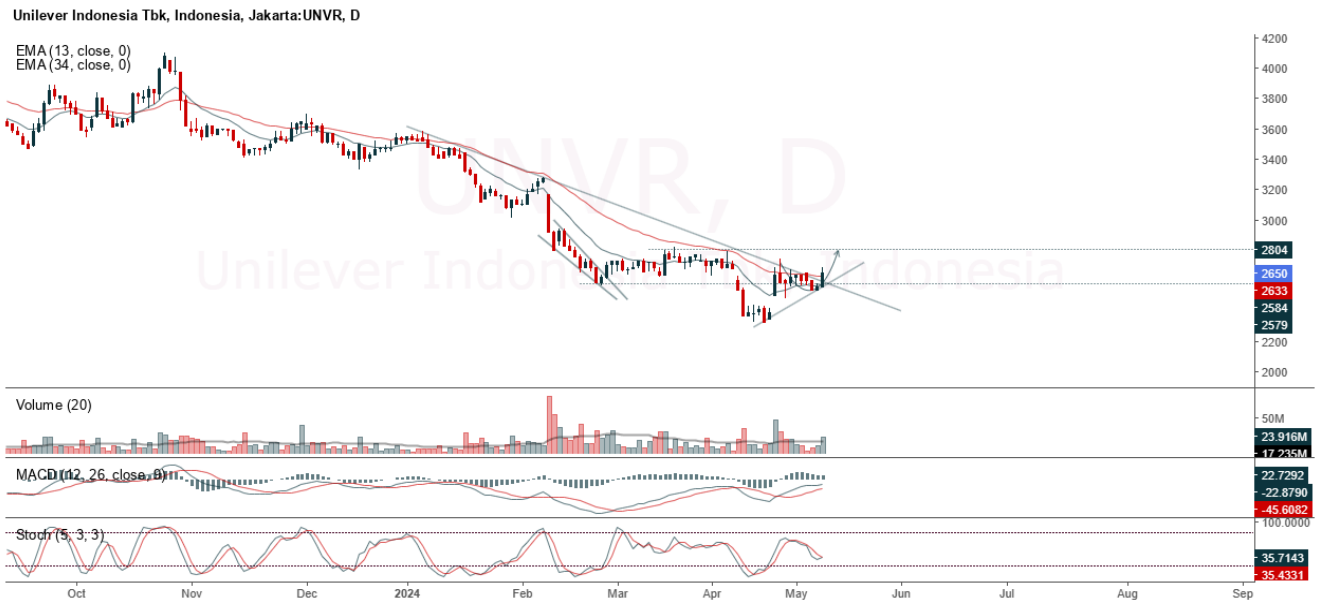
TRADING STRATEGY:

1. Target Price: The price has a bullish opportunity to test the resistance level 3,150. If it breaks level 3,150 then the price will go to level 3,190. We recommend to be careful if the price fails to break through or turn around the support area.

2. Stop Loss: To minimize the risk of loss, we recommend placing a stop loss at level 3,030.

- Entry Buy : 3,050 – 3,090
- Target Price : 3,150 – 3,190
- Support : 3,040 – 3,050
- Cut loss : 3,030

UNVR



(UNVR). Price closed higher and breakup trendline resistance. Price has the opportunity strengthen to the next resistance. Stochastic is golden cross, MACD histogram is moving positive (line is bullish) and volume is increasing. Confirm buy if the next candle returns bullish or buy on support if it goes down first. Be careful if you fail to stay above the support level or become a support breakdown. **(Trading Buy)**

TRADING STRATEGY:

1. **Target Price:** The price has a bullish opportunity to test the resistance level 2,720. If it breaks level 2,720 then the price will go to level 2,770. We recommend to be careful if the price fails to break through or turn around the support area.

2. **Stop Loss:** To minimize the risk of loss, we recommend placing a stop loss at level 2,580.

- Entry Buy : 2,600 – 2,650
- Target Price : 2,720 – 2,770
- Support : 2,590 – 2,600
- Cut loss : 2,580

Forecast – Technical Analysis

Ticker	MA5	RSI Rec	MACD Trend	Recomm.	Pivot Point	Support		Resistance		Stop Loss Level
						1	2	1	2	
JCI	Positive	Trading	Positive	Spec. Buy	7,075	7,050	7,025	7,100	7,150	6,925
ACES	Positive	Trading	Negative	Hold	855	830	775	910	935	765
ADRO	Negative	Overbought	Positive	Sell	2,910	2,850	2,790	2,970	3,030	2,750
AKRA	Negative	Trading	Negative	Sell	1,635	1,615	1,585	1,665	1,685	1,560
AMRT	Positive	Trading	Positive	Spec. Buy	9,675	9,475	9,275	9,875	10,075	9,150
ANTM	Negative	Trading	Negative	Sell	2,840	2,805	2,770	2,875	2,910	2,725
ARTO	Negative	Trading	Negative	Sell	1,535	1,515	1,500	1,550	1,570	1,475
ASII	Negative	Trading	Positive	Hold	2,250	2,220	2,200	2,270	2,300	2,165
BBCA	Positive	Trading	Positive	Spec. Buy	5,125	5,075	5,025	5,175	5,225	4,945
BBNI	Negative	Trading	Negative	Sell	9,375	9,200	9,050	9,525	9,700	8,900
BBRI	Positive	Oversold	Negative	Spec. Buy	4,690	4,600	4,510	4,780	4,870	4,440
BBTN	Positive	Oversold	Negative	Spec. Buy	4,665	4,630	4,595	4,700	4,735	4,525
BMRI	Positive	Oversold	Negative	Spec. Buy	1,230	1,215	1,195	1,250	1,265	1,180
BRIS	Positive	Oversold	Negative	Spec. Buy	6,200	6,125	6,050	6,275	6,350	5,950
BRPT	Negative	Trading	Positive	Hold	2,405	2,260	2,085	2,580	2,725	2,055
BUKA	Positive	Trading	Positive	Spec. Buy	980	970	955	995	1,005	940
CPIN	Positive	Oversold	Positive	Buy	122	119	115	126	129	114
EMTK	Negative	Trading	Positive	Hold	5,225	5,150	5,075	5,300	5,375	5,000
ESSA	Negative	Overbought	Positive	Sell	810	790	770	830	850	760
EXCL	Negative	Trading	Positive	Hold	2,560	2,470	2,400	2,630	2,720	2,365
GGRM	Negative	Oversold	Negative	Spec. Buy	18,000	17,900	17,800	18,100	18,200	17,525
GOTO	Negative	Trading	Positive	Hold	67	66	64	69	70	63
HRUM	Negative	Trading	Negative	Sell	1,345	1,330	1,305	1,370	1,385	1,285
ICBP	Negative	Trading	Positive	Hold	10,375	10,175	9,800	10,750	10,950	9,650
INCO	Negative	Overbought	Positive	Sell	4,525	4,470	4,375	4,620	4,675	4,310
INDF	Positive	Trading	Positive	Spec. Buy	6,125	6,075	5,975	6,225	6,275	5,875
INKP	Negative	Trading	Negative	Sell	9,550	9,375	9,175	9,750	9,925	9,025
INTP	Positive	Strong Buy	Negative	Buy	6,750	6,675	6,575	6,850	6,925	6,475
ITMG	Positive	Trading	Negative	Hold	10,625	10,450	10,350	10,725	10,900	10,175
KLBF	Positive	Trading	Negative	Hold	24,550	24,200	23,700	25,050	25,400	23,325
MAPI	Positive	Trading	Positive	Spec. Buy	1,425	1,410	1,390	1,445	1,460	1,370
MBMA	Negative	Oversold	Negative	Spec. Buy	1,500	1,465	1,410	1,555	1,590	1,390
MDKA	Negative	Trading	Positive	Hold	570	560	550	580	590	540
MEDC	Negative	Trading	Negative	Sell	2,745	2,685	2,655	2,775	2,835	2,615
MTEL	Negative	Oversold	Negative	Spec. Buy	1,330	1,305	1,275	1,360	1,385	1,255
PGAS	Positive	Oversold	Negative	Spec. Buy	570	560	550	580	590	540
PGEO	Negative	Overbought	Positive	Sell	1,520	1,505	1,490	1,535	1,550	1,465
PTBA	Negative	Overbought	Positive	Sell	1,290	1,250	1,215	1,325	1,365	1,195
PTMP	Negative	Trading	Negative	Sell	2,940	2,910	2,880	2,970	3,000	2,835
SIDO	Negative	Overbought	Negative	Strong Sell	715	710	700	725	730	690
SMGR	Positive	Oversold	Negative	Spec. Buy	4,425	4,355	4,285	4,495	4,565	4,220
SRTG	Negative	Trading	Positive	Hold	1,490	1,455	1,410	1,535	1,570	1,390
TLKM	Positive	Oversold	Positive	Buy	3,075	3,050	3,015	3,110	3,135	2,970
TOWR	Negative	Oversold	Positive	Spec. Buy	785	775	755	805	815	740
UNTR	Positive	Oversold	Negative	Spec. Buy	22,175	22,025	21,925	22,275	22,425	21,575
UNVR	Positive	Trading	Positive	Spec. Buy	2,615	2,540	2,485	2,670	2,745	2,450

OUR TEAM

Sukarno Alatas

Head of Equity Research

sukarno@kiwoom.co.id | 021 5010 5800**Abdul Azis Setyo Wibowo**

Equity Research Analyst

azis@kiwoom.co.id | 021 5010 5800**Miftahul Khaer**

Equity Research Analyst

khaer.miftahul@kiwoom.co.id | 021 5010 5800**Vicky Rosalinda**

Equity Research Analyst

vicky.rosalinda@kiwoom.co.id | 021 5010 5800**Wahyu Saputra**

Research Associate

wahyu.saputra@kiwoom.co.id | 021 5010 5800**OTHER DISCLOSURES**

All Kiwoom's research reports made available to clients are simultaneously available on our own website <http://www.kiwoom.co.id/>. Not all research content is redistributed, e-mailed or made available to third-party aggregators. For all research reports available on a particular stock, please contact your sales representative. Any data discrepancies in this report could be the result of different calculations and/or adjustments.

DISCLAIMER This report has been prepared and issued by PT Kiwoom Sekuritas Indonesia. Information has been obtained from sources believed to be reliable but Kiwoom Securities do not warrant its completeness or accuracy. Forward-looking information or statements in this report contain information that is based on forecast of future results, estimates of amounts not yet determinable, assumptions, and therefore involve known and unknown risks and uncertainties which may cause the actual results, performance or achievements of their subject matter to be materially different from current expectations.

To the fullest extent allowed by law, PT Kiwoom Sekuritas Indonesia shall not be liable for any direct, indirect or consequential losses, loss of profits, damages, costs or expenses incurred or suffered by any person or organization arising from reliance on or use of any information contained on this report. The information that we provide should not be construed in any manner whatsoever as, personalized advice.

No mention of a particular security in this report constitutes a recommendation to buy, sell or hold that or any security, or that any particular security, portfolio of securities, transaction or investment strategy is suitable for any specific person. This report is being supplied to you solely for your information and may not be reproduced by, further distributed to or published in whole or in part by, any other person.