

JCI Range Today 7,094 – 7,136 (Support), 7,234 – 7,254 (Resistance)

Jakarta Stock Exchange Composite Index, Indonesia, Jakarta:JKSE, D

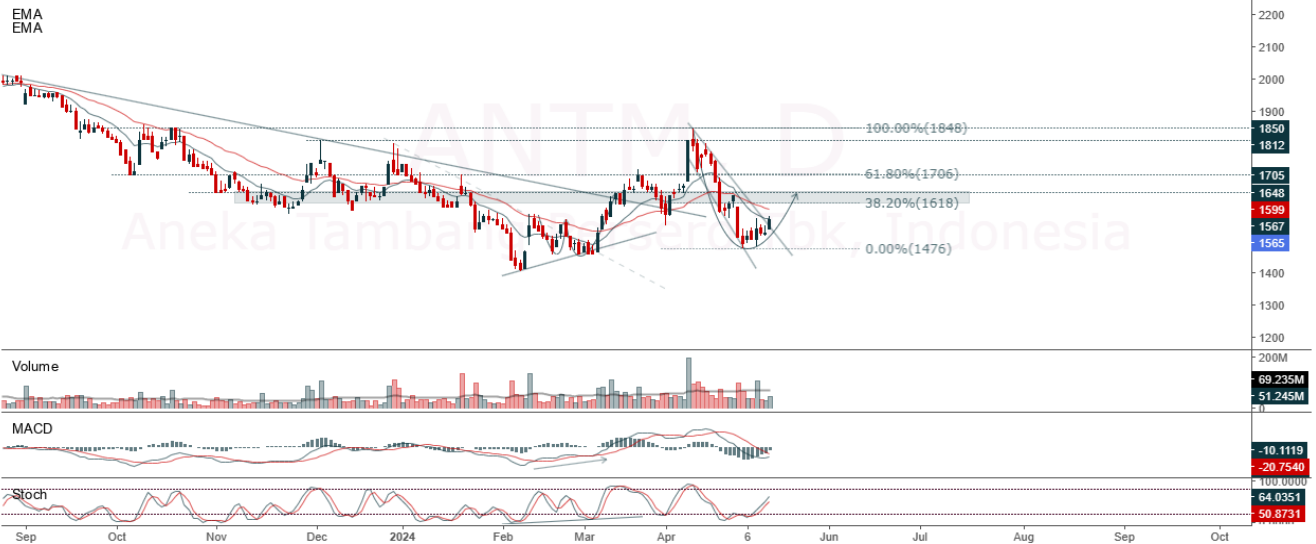


Jakarta Composite Index, Price closed positive and breakout resistance. Indicator from stochastic is bullish, MACD histogram is moving positive (line is bullish) and volume is neutral. Bearish scenario: If it moves bearish again, JCI is expected to weaken again to the support range of 7,094 – 7,136. Bullish scenario: If JCI is able to move bullish, JCI has the opportunity to break resistance 7,234 – 7,254.

Stock Pick Today: ANTM, BBTN, INKP, TINS

ANTM

Aneka Tambang Persero Tbk, Indonesia, Jakarta:ANTM, D



(ANTM). Price closed higher and breakup trendline resistance. Price has the opportunity strengthen to the nearest resistance. Stochastic is still bullish, MACD histogram is moving positive direction (line is golden cross potential) and volume is increasing. Confirm buy if the next candle returns bullish or buy on support if it goes down first. Be careful if you fail to stay above the support level or become a support breakdown. **(Trading Buy)**

TRADING STRATEGY:

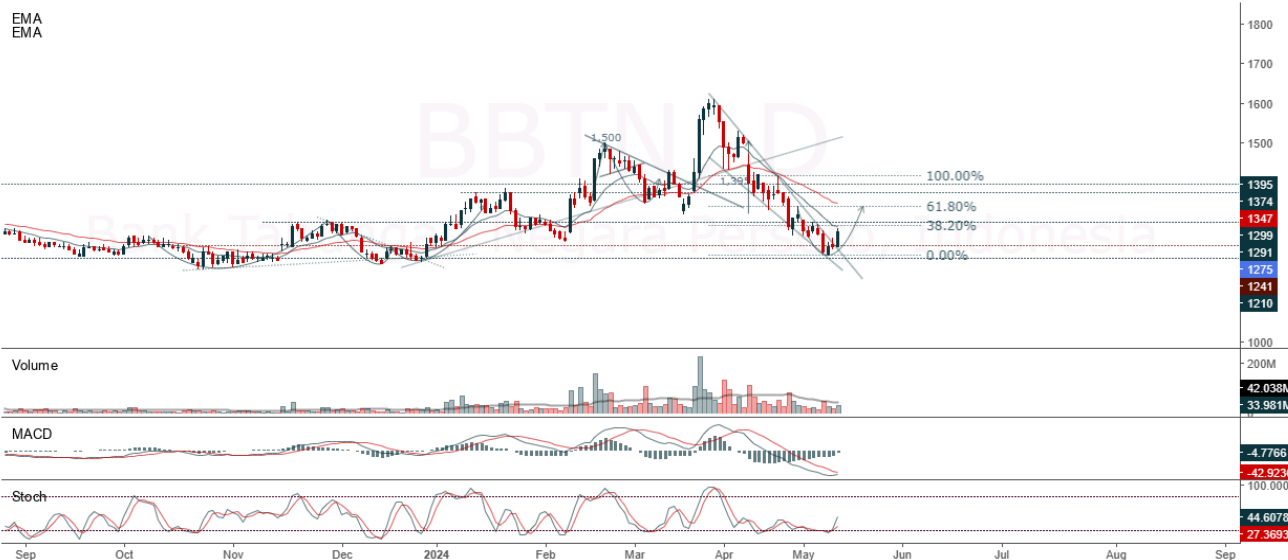
1. **Target Price:** The price has a bullish opportunity to test the resistance level 1,600. If it breaks level 1,600 then the price will go to level 1,625. We recommend to be careful if the price fails to break through or turn around the support area.

2. **Stop Loss:** To minimize the risk of loss, we recommend placing a stop loss at level 1,530.

Entry Buy : 1,545 – 1,565
 Target Price : 1,600 – 1,625
 Support : 1,535 – 1,545
 Cut loss : 1,530

BBTN

Bank Tabungan Negara Persero, Indonesia, Jakarta:BBTN, D



(BBTN). Price closed higher and breakup trendline resistance. Price has the opportunity strengthen to the nearest resistance. Stochastic is bullish, MACD histogram is moving positive direction (line is golden cross potential) and volume is increasing. Confirm buy if the next candle returns bullish or buy on support if it goes down first. Be careful if you fail to stay above the support level or become a support breakdown. **(Trading Buy)**

TRADING STRATEGY:

1. Target Price: The price has a bullish opportunity to test the resistance level 1,300. If it breaks level 1,300 then the price will go to level 1,320. We recommend to be careful if the price fails to break through or turn around the support area.
2. Stop Loss: To minimize the risk of loss, we recommend placing a stop loss at level 1,245.

Entry Buy : 1,260 – 1,275
 Target Price : 1,300 – 1,320
 Support : 1,250 – 1,260
 Cut loss : 1,245

INKP

Indah Kiat Pulp & Paper Tbk, Indonesia, Jakarta:INKP, D

EMA (13, close, 0)
EMA (34, close, 0)



(INKP). Price closed higher and breakup dynamic resistance at EMA 10 & 20. Price has the opportunity strengthen to the nearest resistance. Stochastic is golden cross, MACD histogram is moving positive direction (line is golden cross potential) and volume is increasing. Confirm buy if the next candle returns bullish or buy on support if it goes down first. Be careful if you fail to stay above the support level or become a support breakdown. **(Trading Buy)**

TRADING STRATEGY:

1. **Target Price:** The price has a bullish opportunity to test the resistance level 9,900. If it breaks level 9,900 then the price will go to level 10,000. We recommend to be careful if the price fails to break through or turn around the support area.

2. **Stop Loss:** To minimize the risk of loss, we recommend placing a stop loss at level 9,500.

Entry Buy : 9,575 – 9,700
Target Price : 9,900 – 10,000
Support : 9,525 – 9,575
Cut loss : 9,500

TINS

Timah Persero Tbk, Indonesia, Jakarta:TINS, D

EMA (13, close, 0)
EMA (34, close, 0)



(TINS). Price closed higher with swing low. Price has the opportunity strengthen to the nearest resistance. Stochastic is golden cross potential, MACD histogram is moving positive direction (line is golden cross potential) and volume is increasing. Confirm buy if the next candle returns bullish or buy on support if it goes down first. Be careful if you fail to stay above the support level or become a support breakdown. **(Trading Buy)**

TRADING STRATEGY:

1. **Target Price:** The price has a bullish opportunity to test the resistance level 980. If it breaks level 980 then the price will go to level 1,000. We recommend to be careful if the price fails to break through or turn around the support area.

2. **Stop Loss:** To minimize the risk of loss, we recommend placing a stop loss at level 920.

- Entry Buy : 930 – 950
- Target Price : 980 – 1,000
- Support : 925 – 930
- Cut loss : 920

Forecast – Technical Analysis

Ticker	MA5	RSI Rec	MACD Trend	Recomm.	Pivot Point	Support		Resistance		Stop Loss Level
						1	2	1	2	
JCI	Positive	Trading	Negative	Hold	7,125	7,075	7,025	7,200	7,250	6,925
ACES	Positive	Trading	Negative	Hold	865	855	840	880	890	830
ADRO	Negative	Overbought	Positive	Sell	2,880	2,795	2,750	2,925	3,010	2,705
AKRA	Positive	Trading	Negative	Hold	1,625	1,615	1,590	1,650	1,660	1,565
AMRT	Positive	Overbought	Positive	Hold	10,050	9,775	9,550	10,275	10,550	9,400
ANTM	Positive	Trading	Negative	Hold	2,790	2,760	2,720	2,830	2,860	2,680
ARTO	Negative	Trading	Negative	Sell	1,555	1,530	1,515	1,570	1,595	1,490
ASII	Negative	Trading	Positive	Hold	2,305	2,265	2,235	2,335	2,375	2,200
BBCA	Positive	Oversold	Negative	Spec. Buy	4,565	4,505	4,475	4,595	4,655	4,405
BBNI	Positive	Trading	Negative	Hold	9,500	9,425	9,325	9,600	9,675	9,200
BBRI	Negative	Oversold	Negative	Spec. Buy	4,965	4,830	4,715	5,075	5,225	4,645
BBTN	Positive	Oversold	Negative	Spec. Buy	4,810	4,745	4,700	4,855	4,920	4,625
BMRI	Positive	Oversold	Negative	Spec. Buy	1,260	1,235	1,210	1,285	1,310	1,190
BRIS	Positive	Oversold	Negative	Spec. Buy	6,300	6,200	6,100	6,400	6,500	6,000
BRPT	Positive	Trading	Negative	Hold	2,445	2,340	2,235	2,550	2,655	2,200
BUKA	Positive	Trading	Positive	Spec. Buy	1,000	970	930	1,040	1,070	915
CPIN	Negative	Trading	Positive	Hold	123	121	119	125	127	117
EMTK	Positive	Trading	Positive	Spec. Buy	5,350	5,275	5,225	5,400	5,475	5,125
ESSA	Negative	Overbought	Negative	Strong Sell	785	770	750	805	820	740
EXCL	Negative	Overbought	Positive	Sell	2,580	2,535	2,470	2,645	2,690	2,430
GGRM	Negative	Oversold	Negative	Spec. Buy	18,725	18,300	18,050	18,975	19,400	17,775
GOTO	Positive	Trading	Positive	Spec. Buy	66	65	63	68	69	62
HRUM	Positive	Trading	Negative	Hold	1,325	1,300	1,275	1,350	1,375	1,255
ICBP	Positive	Trading	Positive	Spec. Buy	10,425	10,250	10,000	10,675	10,850	9,850
INCO	Negative	Trading	Positive	Hold	4,485	4,430	4,365	4,550	4,605	4,300
INDF	Positive	Trading	Positive	Spec. Buy	6,125	6,075	6,000	6,200	6,250	5,900
INKP	Negative	Trading	Negative	Sell	9,600	9,450	9,300	9,750	9,900	9,175
INTP	Positive	Strong Buy	Negative	Buy	6,600	6,525	6,375	6,750	6,825	6,275
ITMG	Positive	Trading	Negative	Hold	10,800	10,600	10,400	11,000	11,200	10,250
KLBF	Negative	Oversold	Negative	Spec. Buy	24,350	24,075	23,850	24,575	24,850	23,475
MAPI	Positive	Trading	Negative	Hold	1,435	1,410	1,385	1,460	1,485	1,365
MBMA	Negative	Oversold	Negative	Spec. Buy	1,505	1,495	1,470	1,530	1,540	1,445
MDKA	Negative	Trading	Positive	Hold	550	540	530	560	570	520
MEDC	Negative	Trading	Positive	Hold	2,735	2,660	2,605	2,790	2,865	2,565
MTEL	Negative	Trading	Negative	Sell	1,340	1,330	1,305	1,365	1,375	1,285
PGAS	Positive	Oversold	Positive	Buy	580	565	560	585	600	550
PGEO	Positive	Overbought	Positive	Hold	1,485	1,465	1,445	1,505	1,525	1,425
PTBA	Positive	Trading	Positive	Spec. Buy	1,260	1,245	1,230	1,275	1,290	1,210
PTMP	Positive	Trading	Negative	Hold	2,925	2,900	2,875	2,950	2,975	2,830
SIDO	Positive	Overbought	Negative	Sell	715	715	705	725	725	695
SMGR	Positive	Strong Buy	Negative	Buy	4,145	4,075	3,995	4,225	4,295	3,935
SRTG	Negative	Overbought	Positive	Sell	1,575	1,555	1,530	1,600	1,620	1,505
TLKM	Negative	Oversold	Positive	Spec. Buy	3,105	3,080	3,045	3,140	3,165	3,000
TOWR	Positive	Oversold	Positive	Buy	735	720	670	785	800	660
UNTR	Positive	Oversold	Negative	Spec. Buy	22,425	22,200	22,025	22,600	22,825	21,700
UNVR	Negative	Trading	Positive	Hold	2,685	2,660	2,625	2,720	2,745	2,585

OUR TEAM

Sukarno Alatas

Head of Equity Research

sukarno@kiwoom.co.id | 021 5010 5800**Abdul Azis Setyo Wibowo**

Equity Research Analyst

azis@kiwoom.co.id | 021 5010 5800**Miftahul Khaer**

Equity Research Analyst

khaer.miftahul@kiwoom.co.id | 021 5010 5800**Vicky Rosalinda**

Equity Research Analyst

vicky.rosalinda@kiwoom.co.id | 021 5010 5800**Wahyu Saputra**

Research Associate

wahyu.saputra@kiwoom.co.id | 021 5010 5800**OTHER DISCLOSURES**

All Kiwoom's research reports made available to clients are simultaneously available on our own website <http://www.kiwoom.co.id/>. Not all research content is redistributed, e-mailed or made available to third-party aggregators. For all research reports available on a particular stock, please contact your sales representative. Any data discrepancies in this report could be the result of different calculations and/or adjustments.

DISCLAIMER This report has been prepared and issued by PT Kiwoom Sekuritas Indonesia. Information has been obtained from sources believed to be reliable but Kiwoom Securities do not warrant its completeness or accuracy. Forward-looking information or statements in this report contain information that is based on forecast of future results, estimates of amounts not yet determinable, assumptions, and therefore involve known and unknown risks and uncertainties which may cause the actual results, performance or achievements of their subject matter to be materially different from current expectations.

To the fullest extent allowed by law, PT Kiwoom Sekuritas Indonesia shall not be liable for any direct, indirect or consequential losses, loss of profits, damages, costs or expenses incurred or suffered by any person or organization arising from reliance on or use of any information contained on this report. The information that we provide should not be construed in any manner whatsoever as, personalized advice.

No mention of a particular security in this report constitutes a recommendation to buy, sell or hold that or any security, or that any particular security, portfolio of securities, transaction or investment strategy is suitable for any specific person. This report is being supplied to you solely for your information and may not be reproduced by, further distributed to or published in whole or in part by, any other person.