

## JCI Range Today 6,927 – 6,946 (Support), 7,127 – 7,140 (Resistance)

Jakarta Stock Exchange Composite Index, Indonesia, Jakarta:JKSE, D

EMA (20, close, 0)  
EMA (10, close, 0)  
EMA (5, close, 0)



**Jakarta Composite Index**, Price closed negative and breakdown support. Indicator from stochastic is golden cross, MACD histogram is moving bearish (line is death cross) and volume is increasing. Bearish scenario: If it moves bearish again, JCI is expected to weaken again to the support range of 6,927 – 6,946. Bullish scenario: If JCI is able to move bullish, JCI has the opportunity to break resistance 7,127 – 7,140.

**Stock Pick Today: BMRI, DSNG, ITMG, JPFA**

## BMRI

Bank Mandiri Persero Tbk PT, Indonesia, Jakarta:BMRI, D



**(BMRI).** Price closed higher with swing low. Price has the opportunity strengthen to the nearest resistance. Stochastic is bullish, MACD histogram is moving bearish (line is flat) and volume is increasing. Confirm buy if the next candle returns bullish or buy on support if it goes down first. Be careful if you fail to stay above the support level or become a support breakdown. **(Trading Buy)**

### TRADING STRATEGY:

1. Target Price: The price has a bullish opportunity to test the resistance level 6,025. If it breaks level 6,025 then the price will go to level 6,150. We recommend to be careful if the price fails to break through or turn around the support area.
2. Stop Loss: To minimize the risk of loss, we recommend placing a stop loss at level 5,700.

Entry Buy : 5,775 – 5,875  
Target Price : 6,025 – 6,150  
Support : 5,725 – 5,775  
Cut loss : 5,700

**DSNG**

Dharma Satya Nusantara Tbk, Indonesia, Jakarta:DSNG, D

 EMA (13, close, 0)  
 EMA (34, close, 0)


**(DSNG).** Price closed higher and breakout resistance. Price has the opportunity strengthen to the next resistance. Stochastic is still bullish, MACD histogram is moving positive direction (line is golden cross potential) and volume is increasing. Confirm buy if the next candle returns bullish or buy on support if it goes down first. Be careful if you fail to stay above the support level or become a support breakdown.  
**(Trading Buy)**

**TRADING STRATEGY:**

- 1. Target Price:** The price has a bullish opportunity to test the resistance level 680. If it breaks level 680 then the price will go to level 695. We recommend to be careful if the price fails to break through or turn around the support area.
- 2. Stop Loss:** To minimize the risk of loss, we recommend placing a stop loss at level 645.

Entry Buy : 655 – 665  
 Target Price : 680 – 695  
 Support : 650 – 655  
 Cut loss : 645

## ITMG

Indo Tambangraya Megah Tbk, Indonesia, Jakarta:ITMG, D

 EMA (13, close, 0)  
 EMA (34, close, 0)


**(ITMG).** Price closed higher and breakout resistance. Price has the opportunity strengthen to the next resistance. Stochastic is bullish, MACD histogram is moving positive (line is bullish) and volume is increasing. Confirm buy if the next candle returns bullish or buy on support if it goes down first. Be careful if you fail to stay above the support level or become a support breakdown. **(Trading Buy)**

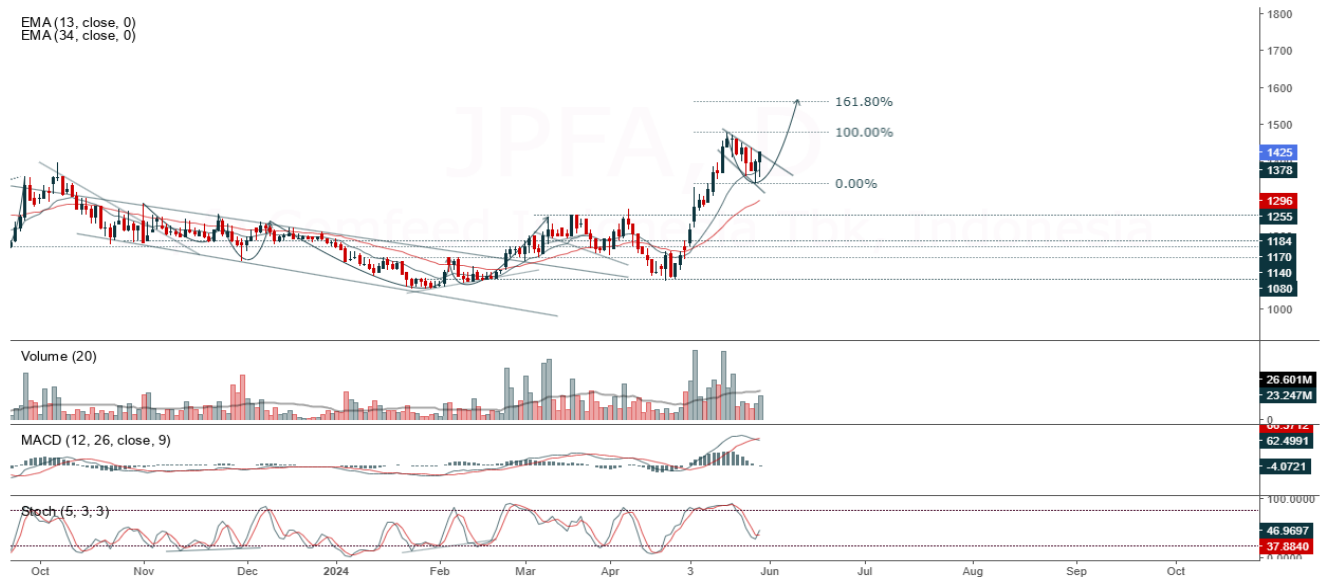
### TRADING STRATEGY:

- 1. Target Price:** The price has a bullish opportunity to test the resistance level 25,350. If it breaks level 25,350 then the price will go to level 25,600. We recommend to be careful if the price fails to break through or turn around the support area.
- 2. Stop Loss:** To minimize the risk of loss, we recommend placing a stop loss at level 24,575.

Entry Buy : 24,750 – 24,950  
 Target Price : 25,350 – 25,600  
 Support : 24,600 – 24,750  
 Cut loss : 24,575

**JPFA**

Japfa Comfeed Indonesia Tbk, Indonesia, Jakarta:JPFA, D

 EMA (13, close, 0)  
 EMA (34, close, 0)


**(JPFA).** Price closed higher and breakup minor trendline resistance. Price has the opportunity strengthen to the nearest resistance. Stochastic is golden cross, MACD histogram is moving positive (line is flat) and volume is increasing. Confirm buy if the next candle returns bullish or buy on support if it goes down first. Be careful if you fail to stay above the support level or become a support breakdown.  
**(Trading Buy)**

**TRADING STRATEGY:**

1. Target Price: The price has a bullish opportunity to test the resistance level 1,460. If it breaks level 1,460 then the price will go to level 1,480. We recommend to be careful if the price fails to break through or turn around the support area.
2. Stop Loss: To minimize the risk of loss, we recommend placing a stop loss at level 1,390.

Entry Buy : 1,405 – 1,425  
 Target Price : 1,460 – 1,480  
 Support : 1,395 – 1,405  
 Cut loss : 1,390

**Forecast – Technical Analysis**

Ticker	MA5	RSI Rec	MACD Trend	Recomm.	Pivot Point	Support 1	Support 2	Resistance 1	Resistance 2	Stop Loss Level
JCI	Positive	Trading	Negative	Hold	7,075	7,000	6,925	7,150	7,225	6,825
ACES	Negative	Trading	Negative	Sell	825	810	800	835	850	785
ADRO	Positive	Trading	Negative	Hold	2,720	2,665	2,630	2,755	2,810	2,590
AKRA	Negative	Trading	Positive	Hold	1,640	1,610	1,580	1,670	1,700	1,560
AMRT	Negative	Strong Sell	Positive	Sell	12,750	12,300	11,700	13,350	13,800	11,525
ANTM	Negative	Trading	Negative	Sell	2,800	2,745	2,710	2,835	2,890	2,665
ARTO	Positive	Trading	Negative	Hold	1,510	1,490	1,475	1,525	1,545	1,450
ASII	Positive	Trading	Positive	Spec. Buy	2,270	2,235	2,190	2,315	2,350	2,155
BBCA	Positive	Oversold	Negative	Spec. Buy	4,385	4,315	4,245	4,455	4,525	4,180
BBNI	Positive	Oversold	Negative	Spec. Buy	9,000	8,775	8,525	9,250	9,475	8,400
BBRI	Positive	Oversold	Negative	Spec. Buy	4,480	4,400	4,290	4,590	4,670	4,225
BBTN	Positive	Oversold	Positive	Buy	4,395	4,305	4,225	4,475	4,565	4,160
BMRI	Positive	Trading	Positive	Spec. Buy	1,245	1,225	1,195	1,275	1,295	1,175
BRIS	Positive	Oversold	Negative	Spec. Buy	5,800	5,600	5,325	6,075	6,275	5,250
BRPT	Positive	Oversold	Negative	Spec. Buy	2,170	2,135	2,080	2,225	2,260	2,045
BUKA	Positive	Trading	Positive	Spec. Buy	1,065	1,030	1,005	1,090	1,125	990
CPIN	Negative	Trading	Positive	Hold	131	126	124	133	138	122
EMTK	Negative	Trading	Negative	Sell	5,250	5,150	5,100	5,300	5,400	5,000
ESSA	Positive	Trading	Negative	Hold	805	795	765	835	845	755
EXCL	Positive	Trading	Negative	Hold	2,415	2,380	2,325	2,470	2,505	2,290
GGRM	Negative	Trading	Positive	Hold	19,075	18,975	18,875	19,175	19,275	18,600
GOTO	Negative	Trading	Positive	Hold	69	67	65	71	73	64
HRUM	Positive	Trading	Positive	Spec. Buy	1,375	1,350	1,310	1,415	1,440	1,290
ICBP	Negative	Trading	Positive	Hold	10,275	10,150	9,975	10,450	10,575	9,825
INCO	Positive	Overbought	Positive	Hold	5,075	4,975	4,885	5,150	5,250	4,810
INDF	Positive	Trading	Positive	Spec. Buy	6,075	6,050	5,975	6,150	6,175	5,900
INKP	Positive	Trading	Negative	Hold	9,500	9,325	9,050	9,775	9,950	8,925
INTP	Positive	Oversold	Positive	Buy	6,500	6,425	6,300	6,625	6,700	6,200
ITMG	Positive	Trading	Negative	Hold	10,250	10,125	9,975	10,400	10,525	9,825
KLBF	Negative	Trading	Positive	Hold	24,625	24,225	23,750	25,100	25,500	23,375
MAPI	Negative	Trading	Positive	Hold	1,525	1,495	1,465	1,555	1,585	1,440
MBMA	Positive	Oversold	Negative	Spec. Buy	1,295	1,280	1,255	1,320	1,335	1,235
MDKA	Negative	Overbought	Positive	Sell	660	640	625	675	695	615
MEDC	Negative	Overbought	Positive	Sell	2,860	2,790	2,730	2,920	2,990	2,690
MTEL	Negative	Trading	Positive	Hold	1,435	1,405	1,380	1,460	1,490	1,360
PGAS	Negative	Trading	Positive	Hold	605	600	585	620	625	575
PGEO	Negative	Overbought	Positive	Sell	1,615	1,585	1,530	1,670	1,700	1,510
PTBA	Positive	Trading	Negative	Hold	1,250	1,235	1,215	1,270	1,285	1,195
PTMP	Positive	Oversold	Negative	Spec. Buy	2,470	2,440	2,390	2,520	2,550	2,355
SIDO	Negative	Trading	Negative	Sell	695	685	665	715	725	655
SMGR	Positive	Strong Buy	Negative	Buy	3,730	3,665	3,610	3,785	3,850	3,555
SRTG	Positive	Trading	Positive	Spec. Buy	1,495	1,460	1,435	1,520	1,555	1,415
TLKM	Positive	Oversold	Negative	Spec. Buy	2,805	2,735	2,655	2,885	2,955	2,615
TOWR	Positive	Oversold	Negative	Spec. Buy	720	710	695	735	745	685
UNTR	Negative	Trading	Positive	Hold	22,350	22,200	21,975	22,575	22,725	21,650
UNVR	Negative	Overbought	Positive	Sell	3,070	2,945	2,850	3,165	3,290	2,805

## OUR TEAM

**Sukarno Alatas**

Head of Equity Research

[sukarno@kiwoom.co.id](mailto:sukarno@kiwoom.co.id) | 021 5010 5800**Abdul Azis Setyo Wibowo**

Equity Research Analyst

[azis@kiwoom.co.id](mailto:azis@kiwoom.co.id) | 021 5010 5800**Miftahul Khaer**

Equity Research Analyst

[khaer.miftahul@kiwoom.co.id](mailto:khaer.miftahul@kiwoom.co.id) | 021 5010 5800**Vicky Rosalinda**

Equity Research Analyst

[vicky.rosalinda@kiwoom.co.id](mailto:vicky.rosalinda@kiwoom.co.id) | 021 5010 5800**Wahyu Saputra**

Research Associate

[wahyu.saputra@kiwoom.co.id](mailto:wahyu.saputra@kiwoom.co.id) | 021 5010 5800**OTHER DISCLOSURES**

All Kiwoom's research reports made available to clients are simultaneously available on our own website <http://www.kiwoom.co.id/>. Not all research content is redistributed, e-mailed or made available to third-party aggregators. For all research reports available on a particular stock, please contact your sales representative. Any data discrepancies in this report could be the result of different calculations and/or adjustments.

**DISCLAIMER** This report has been prepared and issued by PT Kiwoom Sekuritas Indonesia. Information has been obtained from sources believed to be reliable but Kiwoom Securities do not warrant its completeness or accuracy. Forward-looking information or statements in this report contain information that is based on forecast of future results, estimates of amounts not yet determinable, assumptions, and therefore involve known and unknown risks and uncertainties which may cause the actual results, performance or achievements of their subject matter to be materially different from current expectations.

To the fullest extent allowed by law, PT Kiwoom Sekuritas Indonesia shall not be liable for any direct, indirect or consequential losses, loss of profits, damages, costs or expenses incurred or suffered by any person or organization arising from reliance on or use of any information contained on this report. The information that we provide should not be construed in any manner whatsoever as, personalized advice.

No mention of a particular security in this report constitutes a recommendation to buy, sell or hold that or any security, or that any particular security, portfolio of securities, transaction or investment strategy is suitable for any specific person. This report is being supplied to you solely for your information and may not be reproduced by, further distributed to or published in whole or in part by, any other person.