

JCI Range Today 7,014 – 7,036 (Support), 7,149 – 7,176 (Resistance)

Jakarta Stock Exchange Composite Index, Indonesia, Jakarta:JKSE, D

EMA (20, close, 0)
EMA (10, close, 0)
EMA (5, close, 0)

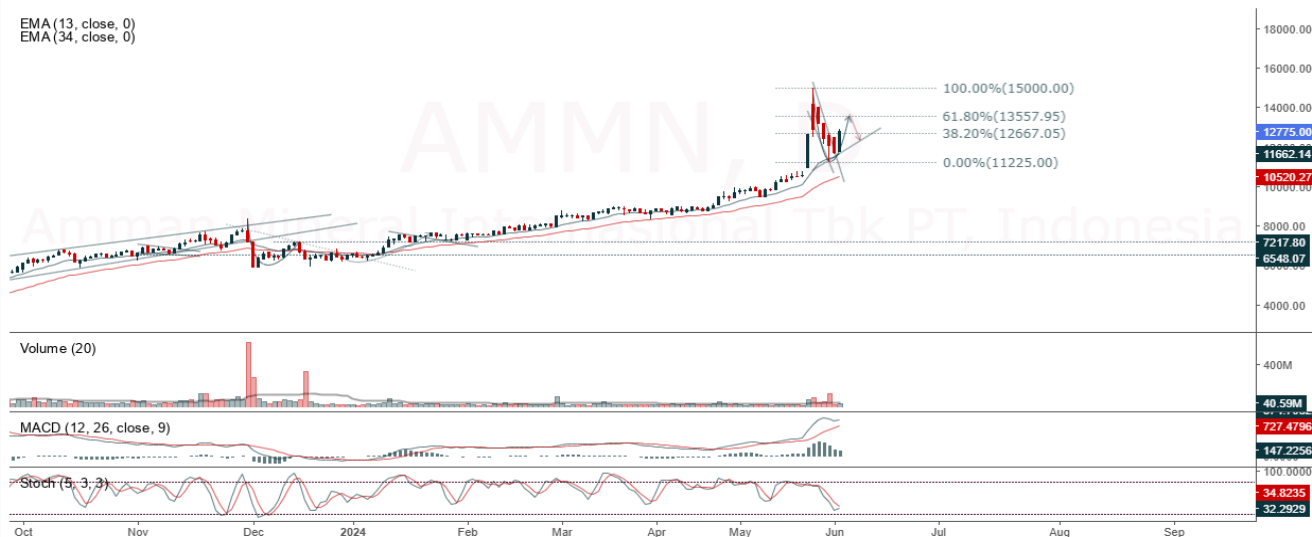


Jakarta Composite Index, Price closed positive and testing dynamic resistance (FR 38.20%). Indicator from stochastic is bullish, MACD histogram is moving positive direction (line is flat) and volume is increasing. Bearish scenario: If it moves bearish again, JCI is expected to weaken again to the support range of 7,014 – 7,036. Bullish scenario: If JCI is able to move bullish, JCI has the opportunity to break resistance 7,149 – 7,176.

Stock Pick Today: AMMN, ERAA, MTEL, TOWR

AMMN

Amman Mineral Internasional Tbk PT, Indonesia, Jakarta:AMMN, D

 EMA (13, close, 0)
 EMA (34, close, 0)


(AMMN). Price closed higher and breakout dynamic resistance (FR 38.20%). Price has the opportunity strengthen to the next resistance. Stochastic is golden cross potential, MACD histogram is moving positive (line is bullish) and volume is increasing. Confirm buy if the next candle returns bullish or buy on support if it goes down first. Be careful if you fail to stay above the support level or become a support breakdown. **(Trading Buy)**

TRADING STRATEGY:

1. **Target Price:** The price has a bullish opportunity to test the resistance level 13,125. If it breaks level 13,125 then the price will go to level 13,200. We recommend to be careful if the price fails to break through or turn around the support area.
2. **Stop Loss:** To minimize the risk of loss, we recommend placing a stop loss at level 12,475.

Entry Buy : 12,650 – 12,775
 Target Price : 13,125 – 13,200
 Support : 12,500 – 12,650
 Cut loss : 12,475

ERAA



(ERAA). Price closed higher and breakup trendline resistance. Price has the opportunity strengthen to the next resistance. Stochastic is bullish, MACD histogram is moving positive (line is golden cross) and volume is increasing. Confirm buy if the next candle returns bullish or buy on support if it goes down first. Be careful if you fail to stay above the support level or become a support breakdown. **(Trading Buy)**

TRADING STRATEGY:

1. Target Price: The price has a bullish opportunity to test the resistance level 418. If it breaks level 418 then the price will go to level 426. We recommend to be careful if the price fails to break through or turn around the support area.
2. Stop Loss: To minimize the risk of loss, we recommend placing a stop loss at level 396.

Entry Buy : 400 – 408
 Target Price : 418 – 426
 Support : 398 – 400
 Cut loss : 396

MTEL

Dayamitra Telekomunikasi PT, Indonesia, Jakarta:MTEL, D



(MTEL). Price closed higher and breakout resistance. Price has the opportunity strengthen to the next resistance. Stochastic is bullish, MACD histogram is moving positive (line is bullish) and volume is increasing. Confirm buy if the next candle returns bullish or buy on support if it goes down first. Be careful if you fail to stay above the support level or become a support breakdown. **(Trading Buy)**

TRADING STRATEGY:

1. **Target Price:** The price has a bullish opportunity to test the resistance level 645. If it breaks level 645 then the price will go to level 660. We recommend to be careful if the price fails to break through or turn around the support area.

2. **Stop Loss:** To minimize the risk of loss, we recommend placing a stop loss at level 610.

Entry Buy : 620 – 630

Target Price : 645 – 660

Support : 615 – 620

Cut loss : 610

TOWR

Sarana Menara Nusantara Tbk, Indonesia, Jakarta:TOWR, D

EMA (13, close, 0)
 EMA (34, close, 0)



(TOWR). Price closed higher with swing low. Price has the opportunity strengthen to the nearest resistance. Stochastic is bullish, MACD histogram is moving positive direction (line is golden cross potential) and volume is decreasing. Confirm buy if the next candle returns bullish or buy on support if it goes down first. Be careful if you fail to stay above the support level or become a support breakdown.
(Trading Buy)

TRADING STRATEGY:

1. **Target Price:** The price has a bullish opportunity to test the resistance level 735. If it breaks level 735 then the price will go to level 750. We recommend to be careful if the price fails to break through or turn around the support area.
2. **Stop Loss:** To minimize the risk of loss, we recommend placing a stop loss at level 690.

Entry Buy : 705 – 715
 Target Price : 735 – 750
 Support : 695 – 705
 Cut loss : 690

Forecast – Technical Analysis

Ticker	MA5	RSI Rec	MACD Trend	Recomm.	Pivot Point	Support 1	Support 2	Resistance 1	Resistance 2	Stop Loss Level
JCI	Positive	Trading	Negative	Hold	7,100	7,050	7,000	7,125	7,175	6,900
ACES	Negative	Oversold	Negative	Spec. Buy	830	800	780	850	880	765
ADRO	Negative	Trading	Negative	Sell	2,905	2,865	2,815	2,955	2,995	2,770
AKRA	Negative	Trading	Positive	Hold	1,600	1,585	1,565	1,620	1,635	1,540
AMRT	Positive	Overbought	Positive	Hold	12,300	11,675	11,125	12,850	13,475	10,950
ANTM	Positive	Trading	Negative	Hold	2,815	2,785	2,765	2,835	2,865	2,720
ARTO	Positive	Oversold	Negative	Spec. Buy	1,460	1,430	1,410	1,480	1,510	1,385
ASII	Positive	Trading	Positive	Spec. Buy	2,345	2,290	2,215	2,420	2,475	2,180
BBCA	Positive	Oversold	Negative	Spec. Buy	4,550	4,470	4,400	4,620	4,700	4,335
BBNI	Positive	Trading	Negative	Hold	9,450	9,350	9,275	9,525	9,625	9,125
BBRI	Positive	Oversold	Negative	Spec. Buy	4,650	4,595	4,550	4,695	4,750	4,480
BBTN	Positive	Oversold	Positive	Buy	4,515	4,435	4,375	4,575	4,655	4,305
BMRI	Negative	Trading	Positive	Hold	1,275	1,260	1,250	1,285	1,300	1,230
BRIS	Negative	Trading	Negative	Sell	6,175	6,075	6,025	6,225	6,325	5,925
BRPT	Positive	Oversold	Negative	Spec. Buy	2,275	2,215	2,185	2,305	2,365	2,150
BUKA	Positive	Trading	Negative	Hold	1,060	1,040	1,020	1,080	1,100	1,005
CPIN	Positive	Trading	Positive	Spec. Buy	137	132	130	139	144	128
EMTK	Positive	Trading	Negative	Hold	5,225	5,150	5,100	5,275	5,350	5,025
ESSA	Positive	Trading	Negative	Hold	800	780	760	820	840	745
EXCL	Positive	Trading	Negative	Hold	2,320	2,265	2,240	2,345	2,400	2,205
GGRM	Positive	Oversold	Positive	Buy	18,450	18,275	18,125	18,600	18,775	17,850
GOTO	Positive	Trading	Positive	Spec. Buy	63	61	59	65	67	58
HRUM	Positive	Trading	Positive	Spec. Buy	1,355	1,340	1,325	1,370	1,385	1,305
ICBP	Positive	Trading	Negative	Hold	10,325	10,200	10,100	10,425	10,550	9,950
INCO	Positive	Trading	Positive	Spec. Buy	4,800	4,655	4,540	4,915	5,050	4,470
INDF	Positive	Trading	Negative	Hold	6,075	6,025	5,950	6,150	6,200	5,875
INKP	Positive	Trading	Negative	Hold	9,275	9,175	9,050	9,400	9,500	8,925
INTP	Positive	Oversold	Positive	Buy	6,825	6,375	6,000	7,200	7,650	5,900
ITMG	Positive	Trading	Negative	Hold	10,375	10,075	9,875	10,575	10,875	9,725
KLBF	Negative	Trading	Positive	Hold	25,350	25,100	24,925	25,525	25,775	24,550
MAPI	Positive	Trading	Positive	Spec. Buy	1,540	1,520	1,500	1,560	1,580	1,480
MBMA	Positive	Oversold	Negative	Spec. Buy	1,410	1,345	1,290	1,465	1,530	1,270
MDKA	Negative	Overbought	Positive	Sell	690	650	620	720	760	610
MEDC	Positive	Trading	Negative	Hold	2,690	2,620	2,580	2,730	2,800	2,540
MTEL	Positive	Trading	Positive	Spec. Buy	1,330	1,315	1,295	1,350	1,365	1,275
PGAS	Negative	Trading	Positive	Hold	620	610	595	635	645	585
PGEO	Positive	Overbought	Negative	Sell	1,615	1,600	1,585	1,630	1,645	1,560
PTBA	Positive	Trading	Negative	Hold	1,215	1,195	1,180	1,230	1,250	1,160
PTMP	Negative	Oversold	Negative	Spec. Buy	2,580	2,565	2,550	2,595	2,610	2,510
SIDO	Negative	Trading	Negative	Sell	715	710	695	730	735	685
SMGR	Positive	Strong Buy	Negative	Buy	3,745	3,430	3,215	3,960	4,275	3,165
SRTG	Negative	Trading	Negative	Sell	1,550	1,525	1,510	1,565	1,590	1,485
TLKM	Negative	Oversold	Positive	Spec. Buy	2,995	2,930	2,875	3,050	3,115	2,830
TOWR	Positive	Oversold	Negative	Spec. Buy	705	690	675	720	735	665
UNTR	Negative	Trading	Positive	Hold	23,075	22,775	22,675	23,175	23,475	22,325
UNVR	Positive	Overbought	Positive	Hold	3,120	3,040	2,990	3,170	3,250	2,945

OUR TEAM

Sukarno Alatas

Head of Equity Research

sukarno@kiwoom.co.id | 021 5010 5800**Abdul Azis Setyo Wibowo**

Equity Research Analyst

azis@kiwoom.co.id | 021 5010 5800**Miftahul Khaer**

Equity Research Analyst

khaer.miftahul@kiwoom.co.id | 021 5010 5800**Vicky Rosalinda**

Equity Research Analyst

vicky.rosalinda@kiwoom.co.id | 021 5010 5800**Wahyu Saputra**

Research Associate

wahyu.saputra@kiwoom.co.id | 021 5010 5800**OTHER DISCLOSURES**

All Kiwoom's research reports made available to clients are simultaneously available on our own website <http://www.kiwoom.co.id/>. Not all research content is redistributed, e-mailed or made available to third-party aggregators. For all research reports available on a particular stock, please contact your sales representative. Any data discrepancies in this report could be the result of different calculations and/or adjustments.

DISCLAIMER This report has been prepared and issued by PT Kiwoom Sekuritas Indonesia. Information has been obtained from sources believed to be reliable but Kiwoom Securities do not warrant its completeness or accuracy. Forward-looking information or statements in this report contain information that is based on forecast of future results, estimates of amounts not yet determinable, assumptions, and therefore involve known and unknown risks and uncertainties which may cause the actual results, performance or achievements of their subject matter to be materially different from current expectations.

To the fullest extent allowed by law, PT Kiwoom Sekuritas Indonesia shall not be liable for any direct, indirect or consequential losses, loss of profits, damages, costs or expenses incurred or suffered by any person or organization arising from reliance on or use of any information contained on this report. The information that we provide should not be construed in any manner whatsoever as, personalized advice.

No mention of a particular security in this report constitutes a recommendation to buy, sell or hold that or any security, or that any particular security, portfolio of securities, transaction or investment strategy is suitable for any specific person. This report is being supplied to you solely for your information and may not be reproduced by, further distributed to or published in whole or in part by, any other person.