

JCI Range Today 6,846 – 6,862 (Support), 6,984 – 7,994 (Resistance)

Jakarta Stock Exchange Composite Index, Indonesia, Jakarta:JKSE, D



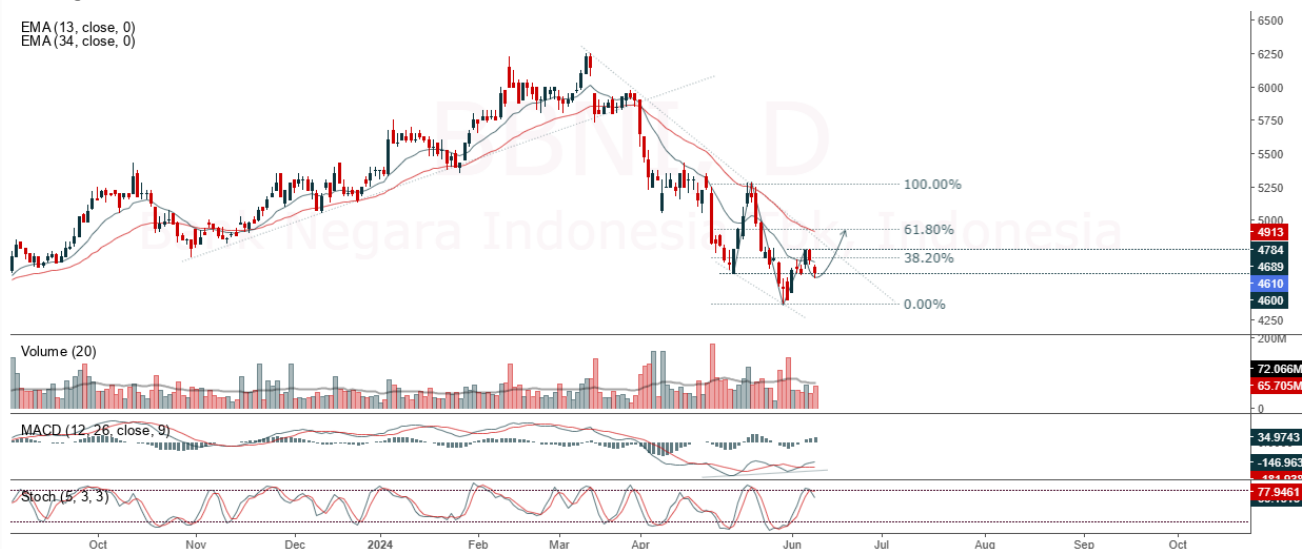
Jakarta Composite Index, Price closed positive with bullish candle. Indicator from stochastic is golden cross potential, MACD histogram is moving bearish (line is sloping) and volume is increasing. Bearish scenario: If it moves bearish again, JCI is expected to weaken again to the support range of 6,846 – 6,862. Bullish scenario: If JCI is able to move bullish, JCI has the opportunity to break resistance 6,984 – 6,994.

Stock Pick Today: BBNI, SILO, SMDR, PTRO

BBNI

Bank Negara Indonesia Tbk, Indonesia, Jakarta:BBNI, D

EMA (13, close, 0)
EMA (34, close, 0)



(BBNI). Price closed negative and testing support. Price has the opportunity strengthen to the nearest resistance. Stochastic is death cross, MACD histogram is moving positive (line is bullish) and volume is increasing. Confirm buy if the next candle returns bullish or buy on support if it goes down first. Be careful if you fail to stay above the support level or become a support breakdown. **(Trading Buy)**

TRADING STRATEGY:

- 1. Target Price:** The price has a bullish opportunity to test the resistance level 4,720. If it breaks level 4,720 then the price will go to level 4,800. We recommend to be careful if the price fails to break through or turn around the support area.
- 2. Stop Loss:** To minimize the risk of loss, we recommend placing a stop loss at level 4,490.

Entry Buy : 4,500 – 4,610
Target Price : 4,720 – 4,800
Support : 4,500 – 4,550
Cut loss : 4,490

SILO

Siloam International Hospitals, Indonesia, Jakarta:SILO, D

EMA(13, close, 0)
EMA(34, close, 0)



(SILO). Price closed higher and breakout resistance. Price has the opportunity strengthen to the next resistance. Stochastic is bullish, MACD histogram is moving positive (line is golden cross) and volume is increasing. Confirm buy if the next candle returns bullish or buy on support if it goes down first. Be careful if you fail to stay above the support level or become a support breakdown. **(Trading Buy)**

TRADING STRATEGY:

1. **Target Price:** The price has a bullish opportunity to test the resistance level 2,680. If it breaks level 2,680 then the price will go to level 2,740. We recommend to be careful if the price fails to break through or turn around the support area.

2. **Stop Loss:** To minimize the risk of loss, we recommend placing a stop loss at level 2,550.

Entry Buy : 2,580 – 2,620
Target Price : 2,680 – 2,740
Support : 2,560 – 2,580
Cut loss : 2,550

SMDR

Samudera Indonesia Tbk, Indonesia, Jakarta:SMDR, D

EMA (13, close, 0)
EMA (34, close, 0)



(SMDR). Price closed higher with bullish candle. Price has the opportunity strengthen to the nearest resistance. Stochastic is golden cross, MACD histogram is moving positive (line is bullish) and volume is decreasing. Confirm buy if the next candle returns bullish or buy on support if it goes down first. Be careful if you fail to stay above the support level or become a support breakdown. **(Trading Buy)**

TRADING STRATEGY:

1. **Target Price:** The price has a bullish opportunity to test the resistance level 308. If it breaks level 308 then the price will go to level 316. We recommend to be careful if the price fails to break through or turn around the support area.

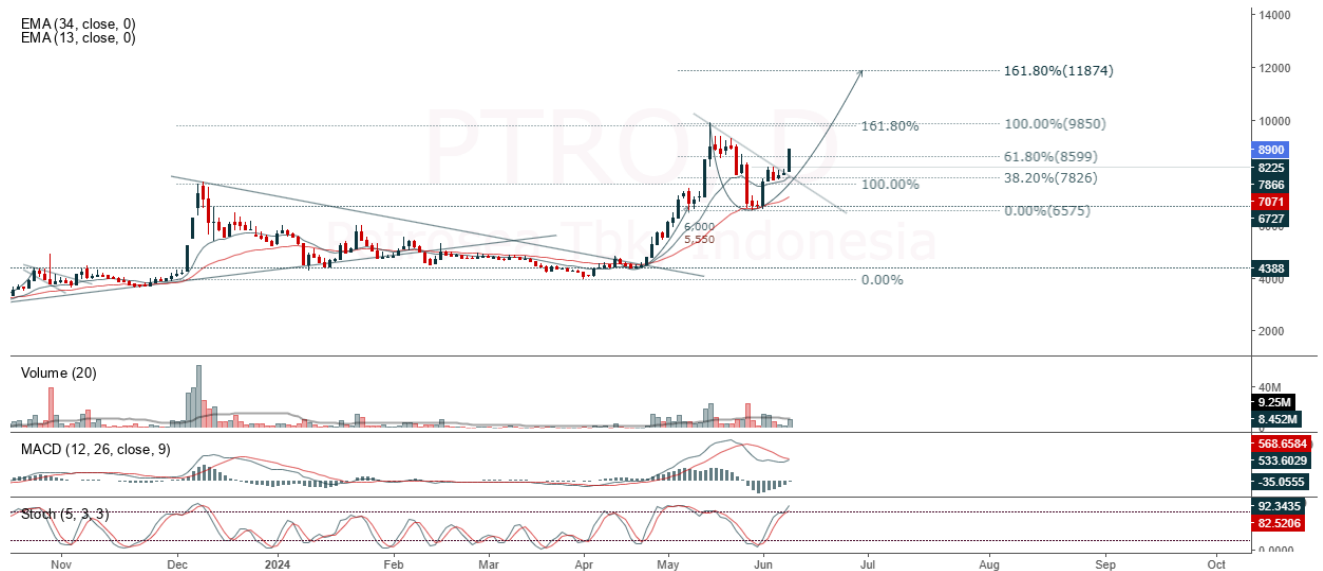
2. **Stop Loss:** To minimize the risk of loss, we recommend placing a stop loss at level 290.

Entry Buy : 294 – 300
Target Price : 308 – 316
Support : 292 – 294
Cut loss : 290

PTRO

Petrosea Tbk, Indonesia, Jakarta:PTRO, D

EMA (34, close, 0)
EMA (13, close, 0)



(PTRO). Price closed higher and breakout resistance. Price has the opportunity strengthen to the next resistance. Stochastic is bullish, MACD histogram is moving positive (line is golden cross) and volume is increasing. Confirm buy if the next candle returns bullish or buy on support if it goes down first. Be careful if you fail to stay above the support level or become a support breakdown. **(Trading Buy)**

TRADING STRATEGY:

1. Target Price: The price has a bullish opportunity to test the resistance level 9,500. If it breaks level 9,500 then the price will go to level 9,850. We recommend to be careful if the price fails to break through or turn around the support area.

2. Stop Loss: To minimize the risk of loss, we recommend placing a stop loss at level 9,000.

Entry Buy : 9,075 – 9,300
Target Price : 9,500 – 9,850
Support : 9,025 – 9,075
Cut loss : 9,000

Forecast – Technical Analysis

Ticker	MA5	RSI Rec	MACD Trend	Recomm.	Pivot Point	Support		Resistance		Stop Loss Level
						1	2	1	2	
JCI	Positive	Oversold	Negative	Spec. Buy	6,900	6,875	6,825	6,950	6,975	6,725
ACES	Negative	Trading	Positive	Hold	850	835	825	860	875	815
ADRO	Positive	Trading	Negative	Hold	2,790	2,725	2,650	2,865	2,930	2,610
AKRA	Positive	Trading	Positive	Spec. Buy	1,615	1,590	1,575	1,630	1,655	1,550
AMRT	Negative	Trading	Negative	Sell	11,750	11,500	11,025	12,225	12,475	10,850
ANTM	Positive	Trading	Negative	Hold	2,800	2,775	2,760	2,815	2,840	2,715
ARTO	Positive	Oversold	Negative	Spec. Buy	1,260	1,225	1,175	1,310	1,345	1,160
ASII	Positive	Trading	Positive	Spec. Buy	2,225	2,100	1,945	2,380	2,505	1,915
BBCA	Negative	Trading	Positive	Hold	4,535	4,505	4,475	4,565	4,595	4,405
BBNI	Negative	Trading	Positive	Hold	9,500	9,475	9,425	9,550	9,575	9,275
BBRI	Negative	Trading	Positive	Hold	4,620	4,575	4,510	4,685	4,730	4,440
BBTN	Positive	Oversold	Positive	Buy	4,375	4,320	4,265	4,430	4,485	4,200
BMRI	Positive	Trading	Positive	Spec. Buy	1,240	1,225	1,210	1,255	1,270	1,190
BRIS	Negative	Trading	Positive	Hold	6,275	6,200	6,125	6,350	6,425	6,025
BRPT	Positive	Oversold	Negative	Spec. Buy	2,140	2,110	2,060	2,190	2,220	2,030
BUKA	Positive	Trading	Negative	Hold	1,005	955	910	1,050	1,100	895
CPIN	Positive	Trading	Positive	Spec. Buy	128	124	119	133	137	117
EMTK	Negative	Trading	Negative	Sell	5,250	5,200	5,125	5,325	5,375	5,050
ESSA	Positive	Trading	Negative	Hold	720	705	690	735	750	680
EXCL	Positive	Oversold	Negative	Spec. Buy	2,230	2,210	2,180	2,260	2,280	2,145
GGRM	Negative	Trading	Negative	Sell	18,675	18,575	18,475	18,775	18,875	18,175
GOTO	Positive	Oversold	Negative	Spec. Buy	56	53	47	62	65	46
HRUM	Positive	Oversold	Negative	Spec. Buy	1,135	1,110	1,090	1,155	1,180	1,075
ICBP	Negative	Trading	Positive	Hold	10,525	10,425	10,275	10,675	10,775	10,125
INCO	Positive	Trading	Negative	Hold	4,410	4,310	4,210	4,510	4,610	4,145
INDF	Negative	Trading	Positive	Hold	6,175	6,150	6,050	6,275	6,300	5,975
INKP	Positive	Trading	Negative	Hold	9,200	9,075	8,900	9,375	9,500	8,750
INTP	Negative	Overbought	Positive	Sell	7,675	7,575	7,400	7,850	7,950	7,275
ITMG	Negative	Trading	Positive	Hold	10,425	10,350	10,175	10,600	10,675	10,025
KLBF	Positive	Trading	Positive	Spec. Buy	24,550	24,350	24,050	24,850	25,050	23,675
MAPI	Negative	Overbought	Positive	Sell	1,600	1,585	1,565	1,620	1,635	1,545
MBMA	Negative	Trading	Positive	Hold	1,440	1,400	1,340	1,500	1,540	1,320
MDKA	Positive	Trading	Negative	Hold	580	560	535	605	625	525
MEDC	Positive	Trading	Negative	Hold	2,465	2,385	2,345	2,505	2,585	2,305
MTEL	Positive	Trading	Negative	Hold	1,315	1,310	1,300	1,325	1,330	1,280
PGAS	Negative	Overbought	Positive	Sell	630	625	605	650	655	595
PGEO	Positive	Trading	Negative	Hold	1,450	1,435	1,410	1,475	1,490	1,390
PTBA	Positive	Trading	Negative	Hold	1,180	1,160	1,140	1,200	1,220	1,120
PTMP	Positive	Oversold	Negative	Spec. Buy	2,505	2,470	2,435	2,540	2,575	2,400
SIDO	Negative	Overbought	Positive	Sell	755	745	730	770	780	720
SMGR	Negative	Trading	Positive	Hold	4,080	4,010	3,950	4,140	4,210	3,890
SRTG	Positive	Trading	Negative	Hold	1,480	1,465	1,440	1,505	1,520	1,420
TLKM	Negative	Trading	Positive	Hold	3,025	2,995	2,955	3,065	3,095	2,910
TOWR	Negative	Trading	Positive	Hold	720	715	705	730	735	695
UNTR	Positive	Trading	Positive	Spec. Buy	22,500	22,325	22,100	22,725	22,900	21,775
UNVR	Positive	Trading	Positive	Spec. Buy	3,065	2,965	2,915	3,115	3,215	2,870

OUR TEAM

Sukarno Alatas

Head of Equity Research

sukarno@kiwoom.co.id | 021 5010 5800

Abdul Azis Setyo Wibowo

Equity Research Analyst

azis@kiwoom.co.id | 021 5010 5800

Miftahul Khaer

Equity Research Analyst

khaer.miftahul@kiwoom.co.id | 021 5010 5800

Vicky Rosalinda

Equity Research Analyst

vicky.rosalinda@kiwoom.co.id | 021 5010 5800

Wahyu Saputra

Research Associate

wahyu.saputra@kiwoom.co.id | 021 5010 5800



OTHER DISCLOSURES

All Kiwoom's research reports made available to clients are simultaneously available on our own website <http://www.kiwoom.co.id/>. Not all research content is redistributed, e-mailed or made available to third-party aggregators. For all research reports available on a particular stock, please contact your sales representative. Any data discrepancies in this report could be the result of different calculations and/or adjustments.

DISCLAIMER This report has been prepared and issued by PT Kiwoom Sekuritas Indonesia. Information has been obtained from sources believed to be reliable but Kiwoom Securities do not warrant its completeness or accuracy. Forward-looking information or statements in this report contain information that is based on forecast of future results, estimates of amounts not yet determinable, assumptions, and therefore involve known and unknown risks and uncertainties which may cause the actual results, performance or achievements of their subject matter to be materially different from current expectations.

To the fullest extent allowed by law, PT Kiwoom Sekuritas Indonesia shall not be liable for any direct, indirect or consequential losses, loss of profits, damages, costs or expenses incurred or suffered by any person or organization arising from reliance on or use of any information contained on this report. The information that we provide should not be construed in any manner whatsoever as, personalized advice.

No mention of a particular security in this report constitutes a recommendation to buy, sell or hold that or any security, or that any particular security, portfolio of securities, transaction or investment strategy is suitable for any specific person. This report is being supplied to you solely for your information and may not be reproduced by, further distributed to or published in whole or in part by, any other person.