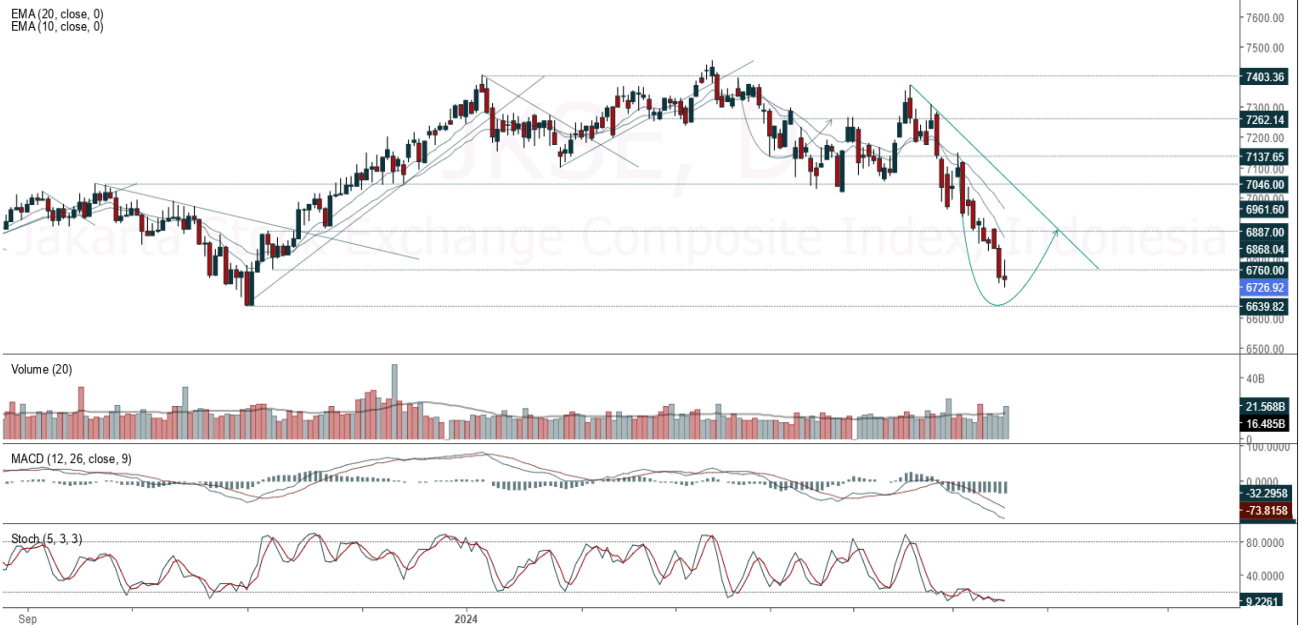


JCI Range Today 6,639 – 6,660 (Support), 6,787 – 6,806 (Resistance)

Jakarta Stock Exchange Composite Index, Indonesia, Jakarta:JKSE, D



Jakarta Composite Index, Price closed negative with bearish candle. Indicator from stochastic is golden cross, MACD histogram is moving bearish (line is sloping) and volume is increasing. Bearish scenario: If it moves bearish again, JCI is expected to weaken again to the support range of 6,639 – 6,660. Bullish scenario: If JCI is able to move bullish, JCI has the opportunity to break resistance 6,787 – 6,806.

Stock Pick Today: ACES, EXCL, INCO, JPFA

ACES

Ace Hardware Indonesia Tbk, Indonesia, Jakarta:ACES, D

EMA (20, close, 0)
EMA (10, close, 0)



(ACES). Price closed higher and breakout resistance. Price has the opportunity strengthen to the next resistance. Stochastic is golden cross, MACD histogram is moving positive (line is bullish) and volume is increasing. Confirm buy if the next candle returns bullish or buy on support if it goes down first. Be careful if you fail to stay above the support level or become a support breakdown. **(Trading Buy)**

TRADING STRATEGY:

1. Target Price: The price has a bullish opportunity to test the resistance level 875. If it breaks level 875 then the price will go to level 890. We recommend to be careful if the price fails to break through or turn around the support area.
2. Stop Loss: To minimize the risk of loss, we recommend placing a stop loss at level 835.

Entry Buy : 845 – 860
Target Price : 875 – 890
Support : 840 – 845
Cut loss : 835

EXCL

XL Axiata Tbk PT, Indonesia, Jakarta:EXCL, D

EMA (10, close, 0)
EMA (20, close, 0)



(EXCL). Price closed higher with bullish candle. Price has the opportunity strengthen to the nearest resistance. Stochastic is golden cross, MACD histogram is moving bearish (line is sloping) and volume is increasing. Confirm buy if the next candle returns bullish or buy on support if it goes down first. Be careful if you fail to stay above the support level or become a support breakdown. **(Trading Buy)**

TRADING STRATEGY:

- 1. Target Price:** The price has a bullish opportunity to test the resistance level 2,170. If it breaks level 2,170 then the price will go to level 2,200. We recommend to be careful if the price fails to break through or turn around the support area.
- 2. Stop Loss:** To minimize the risk of loss, we recommend placing a stop loss at level 2,070.

Entry Buy : 2,090 – 2,130
 Target Price : 2,170 – 2,200
 Support : 2,080 – 2,090
 Cut loss : 2,070

INCO



(INCO). Price closed higher with swing low. Price has the opportunity strengthen to the nearest resistance. Stochastic is bullish, MACD histogram is moving bearish (line is sloping) and volume is neutral. Confirm buy if the next candle returns bullish or buy on support if it goes down first. Be careful if you fail to stay above the support level or become a support breakdown. **(Trading Buy)**

TRADING STRATEGY:

1. **Target Price:** The price has a bullish opportunity to test the resistance level 4,200. If it breaks level 4,200 then the price will go to level 4,270. We recommend to be careful if the price fails to break through or turn around the support area.

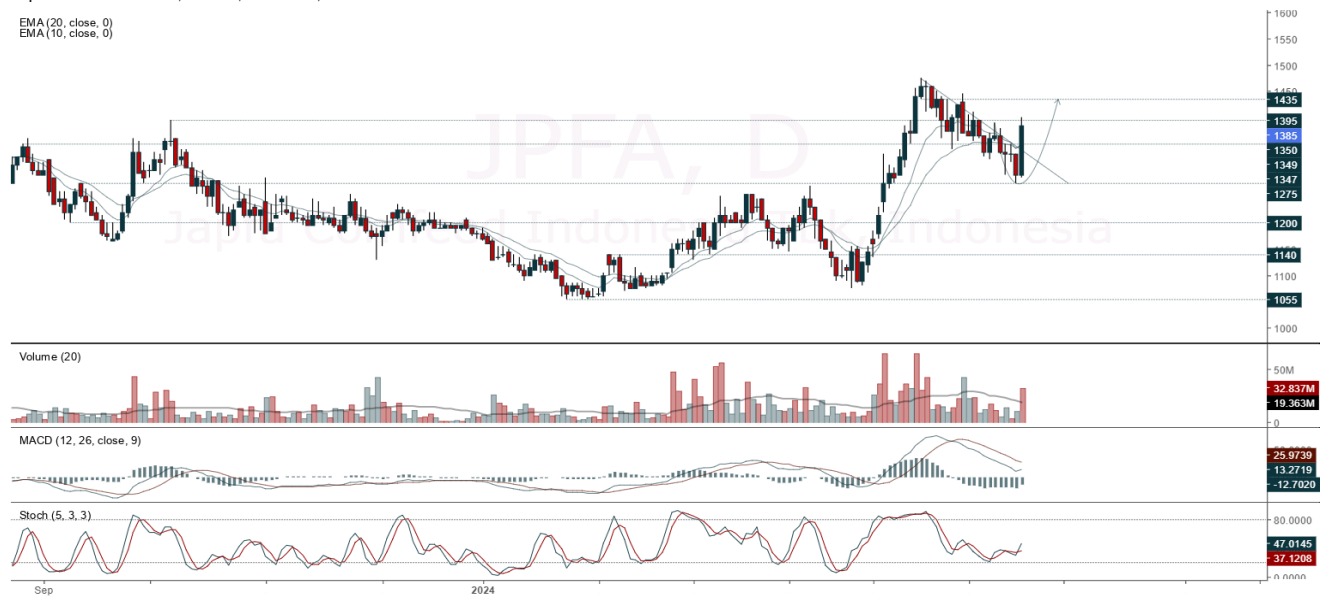
2. **Stop Loss:** To minimize the risk of loss, we recommend placing a stop loss at level 4,020.

Entry Buy : 4,050 – 4,120
 Target Price : 4,200 – 4,270
 Support : 4,030 – 4,050
 Cut loss : 4,020

JPFA

Japfa Comfeed Indonesia Tbk, Indonesia, Jakarta:JPFA, D

EMA(20, close, 0)
EMA(10, close, 0)



(JPFA). Price closed higher and breakup trendline resistance. Price has the opportunity strengthen to the next resistance. Stochastic is golden cross, MACD histogram is moving positive direction (line is golden cross potential) and volume is increasing significantly. Confirm buy if the next candle returns bullish or buy on support if it goes down first. Be careful if you fail to stay above the support level or become a support breakdown. **(Trading Buy)**

TRADING STRATEGY:

1. Target Price: The price has a bullish opportunity to test the resistance level 1,410. If it breaks level 1,410 then the price will go to level 1,435. We recommend to be careful if the price fails to break through or turn around the support area.

2. Stop Loss: To minimize the risk of loss, we recommend placing a stop loss at level 1,345.

Entry Buy : 1,360 – 1,385

Target Price : 1,410 – 1,435

Support : 1,350 – 1,360

Cut loss : 1,345

Forecast – Technical Analysis

Ticker	MA5	RSI Rec	MACD Trend	Recomm.	Pivot Point	Support		Resistance		Stop Loss Level
						1	2	1	2	
JCI	Positive	Oversold	Negative	Spec. Buy	6,750	6,675	6,650	6,775	6,825	6,550
ACES	Positive	Trading	Positive	Spec. Buy	855	835	825	865	885	810
ADRO	Positive	Trading	Negative	Hold	2,720	2,645	2,570	2,795	2,870	2,530
AKRA	Positive	Trading	Positive	Spec. Buy	1,575	1,565	1,550	1,590	1,600	1,530
AMRT	Negative	Trading	Negative	Sell	12,100	11,925	11,750	12,275	12,450	11,575
ANTM	Positive	Trading	Negative	Hold	2,690	2,635	2,600	2,725	2,780	2,560
ARTO	Negative	Oversold	Negative	Spec. Buy	1,210	1,190	1,160	1,240	1,260	1,140
ASII	Positive	Oversold	Negative	Spec. Buy	1,975	1,895	1,825	2,045	2,125	1,795
BBCA	Positive	Trading	Positive	Spec. Buy	4,460	4,405	4,370	4,495	4,550	4,300
BBNI	Positive	Trading	Positive	Spec. Buy	9,150	9,050	8,950	9,250	9,350	8,825
BBRI	Positive	Oversold	Negative	Spec. Buy	4,315	4,240	4,185	4,370	4,445	4,120
BBTN	Positive	Oversold	Positive	Buy	4,135	4,025	3,985	4,175	4,285	3,925
BMRI	Positive	Oversold	Positive	Buy	1,195	1,165	1,145	1,215	1,245	1,130
BRIS	Positive	Oversold	Positive	Buy	5,775	5,675	5,600	5,850	5,950	5,500
BRPT	Negative	Trading	Positive	Hold	2,365	2,280	2,215	2,430	2,515	2,180
BUKA	Positive	Trading	Negative	Hold	935	900	875	960	995	860
CPIN	Positive	Oversold	Negative	Spec. Buy	119	115	112	122	126	110
EMTK	Positive	Oversold	Negative	Spec. Buy	4,875	4,790	4,735	4,930	5,025	4,665
ESSA	Negative	Trading	Negative	Sell	775	765	740	800	810	730
EXCL	Positive	Oversold	Negative	Spec. Buy	2,110	2,060	2,020	2,150	2,200	1,990
GGRM	Positive	Trading	Negative	Hold	18,175	18,050	17,875	18,350	18,475	17,600
GOTO	Positive	Oversold	Negative	Spec. Buy	51	50	49	52	53	48
HRUM	Positive	Oversold	Negative	Spec. Buy	1,085	1,045	1,010	1,120	1,160	995
ICBP	Negative	Trading	Positive	Hold	10,350	10,175	10,000	10,525	10,700	9,850
INCO	Positive	Oversold	Negative	Spec. Buy	4,065	3,970	3,875	4,160	4,255	3,815
INDF	Positive	Trading	Positive	Spec. Buy	6,000	5,875	5,750	6,125	6,250	5,650
INKP	Positive	Oversold	Negative	Spec. Buy	8,725	8,525	8,350	8,900	9,100	8,225
INTP	Positive	Trading	Positive	Spec. Buy	7,325	7,050	6,800	7,575	7,850	6,675
ITMG	Positive	Trading	Positive	Spec. Buy	10,125	10,050	9,900	10,275	10,350	9,750
KLBF	Positive	Oversold	Negative	Spec. Buy	23,900	23,700	23,350	24,250	24,450	23,000
MAPI	Positive	Trading	Positive	Spec. Buy	1,565	1,535	1,500	1,600	1,630	1,475
MBMA	Negative	Trading	Positive	Hold	1,395	1,360	1,310	1,445	1,480	1,290
MDKA	Negative	Trading	Negative	Sell	565	540	530	575	600	520
MEDC	Positive	Oversold	Negative	Spec. Buy	2,305	2,275	2,245	2,335	2,365	2,210
MTEL	Positive	Oversold	Negative	Spec. Buy	1,260	1,220	1,180	1,300	1,340	1,165
PGAS	Positive	Trading	Negative	Hold	600	590	570	620	630	560
PGEO	Positive	Trading	Negative	Hold	1,420	1,400	1,380	1,440	1,460	1,355
PTBA	Positive	Oversold	Negative	Spec. Buy	1,035	1,005	980	1,060	1,090	965
PTMP	Positive	Oversold	Positive	Buy	2,445	2,420	2,395	2,470	2,495	2,360
SIDO	Positive	Trading	Positive	Spec. Buy	725	715	695	745	755	685
SMGR	Positive	Oversold	Positive	Buy	3,505	3,430	3,375	3,560	3,635	3,325
SRTG	Positive	Oversold	Negative	Spec. Buy	1,295	1,225	1,155	1,365	1,435	1,135
TLKM	Positive	Oversold	Negative	Spec. Buy	2,805	2,760	2,715	2,850	2,895	2,675
TOWR	Positive	Oversold	Negative	Spec. Buy	675	670	655	690	695	645
UNTR	Positive	Oversold	Negative	Spec. Buy	21,350	21,100	20,850	21,600	21,850	20,525
UNVR	Negative	Overbought	Negative	Strong Sell	3,135	3,065	2,995	3,205	3,275	2,950

OUR TEAM

Sukarno Alatas

Head of Equity Research

sukarno@kiwoom.co.id | 021 5010 5800

Abdul Azis Setyo Wibowo

Equity Research Analyst

azis@kiwoom.co.id | 021 5010 5800

Miftahul Khaer

Equity Research Analyst

khaer.miftahul@kiwoom.co.id | 021 5010 5800

Vicky Rosalinda

Equity Research Analyst

vicky.rosalinda@kiwoom.co.id | 021 5010 5800

Wahyu Saputra

Research Associate

wahyu.saputra@kiwoom.co.id | 021 5010 5800



OTHER DISCLOSURES

All Kiwoom's research reports made available to clients are simultaneously available on our own website <http://www.kiwoom.co.id/>. Not all research content is redistributed, e-mailed or made available to third-party aggregators. For all research reports available on a particular stock, please contact your sales representative. Any data discrepancies in this report could be the result of different calculations and/or adjustments.

DISCLAIMER This report has been prepared and issued by PT Kiwoom Sekuritas Indonesia. Information has been obtained from sources believed to be reliable but Kiwoom Securities do not warrant its completeness or accuracy. Forward-looking information or statements in this report contain information that is based on forecast of future results, estimates of amounts not yet determinable, assumptions, and therefore involve known and unknown risks and uncertainties which may cause the actual results, performance or achievements of their subject matter to be materially different from current expectations.

To the fullest extent allowed by law, PT Kiwoom Sekuritas Indonesia shall not be liable for any direct, indirect or consequential losses, loss of profits, damages, costs or expenses incurred or suffered by any person or organization arising from reliance on or use of any information contained on this report. The information that we provide should not be construed in any manner whatsoever as, personalized advice.

No mention of a particular security in this report constitutes a recommendation to buy, sell or hold that or any security, or that any particular security, portfolio of securities, transaction or investment strategy is suitable for any specific person. This report is being supplied to you solely for your information and may not be reproduced by, further distributed to or published in whole or in part by, any other person.