

JCI Range Today 6,727 – 6,748 (Support), 6,878 – 6,897 (Resistance)

Jakarta Stock Exchange Composite Index, Indonesia, Jakarta:JKSE, D



Jakarta Composite Index, Price closed positive and breakout resistance. Indicator from stochastic is bullish, MACD histogram is moving positive direction (line is golden cross potential) and volume is decreasing. Bearish scenario: If it moves bearish again, JCI is expected to weaken again to the support range of 6,727 – 6,748. Bullish scenario: If JCI is able to move bullish, JCI has the opportunity to break resistance 6,878 – 6,897.

Stock Pick Today: BBCA, ELSA, GJTL, MTEL

BBCA

Bank Central Asia Tbk, Indonesia, Jakarta:BBCA, D

EMA (20, close, 0)
EMA (10, close, 0)



(BBCA). Price closed higher and breakout resistance. Price has the opportunity strengthen to the next resistance. Stochastic is bullish, MACD histogram is moving positive (line is golden cross) and volume is decreasing. Confirm buy if the next candle returns bullish or buy on support if it goes down first. Be careful if you fail to stay above the support level or become a support breakdown. **(Trading Buy)**

TRADING STRATEGY:

1. **Target Price:** The price has a bullish opportunity to test the resistance level 9,600. If it breaks level 9,600 then the price will go to level 9,750. We recommend to be careful if the price fails to break through or turn around the support area.

2. **Stop Loss:** To minimize the risk of loss, we recommend placing a stop loss at level 9,225.

Entry Buy : 9,300 – 9,425

Target Price : 9,600 – 9,750

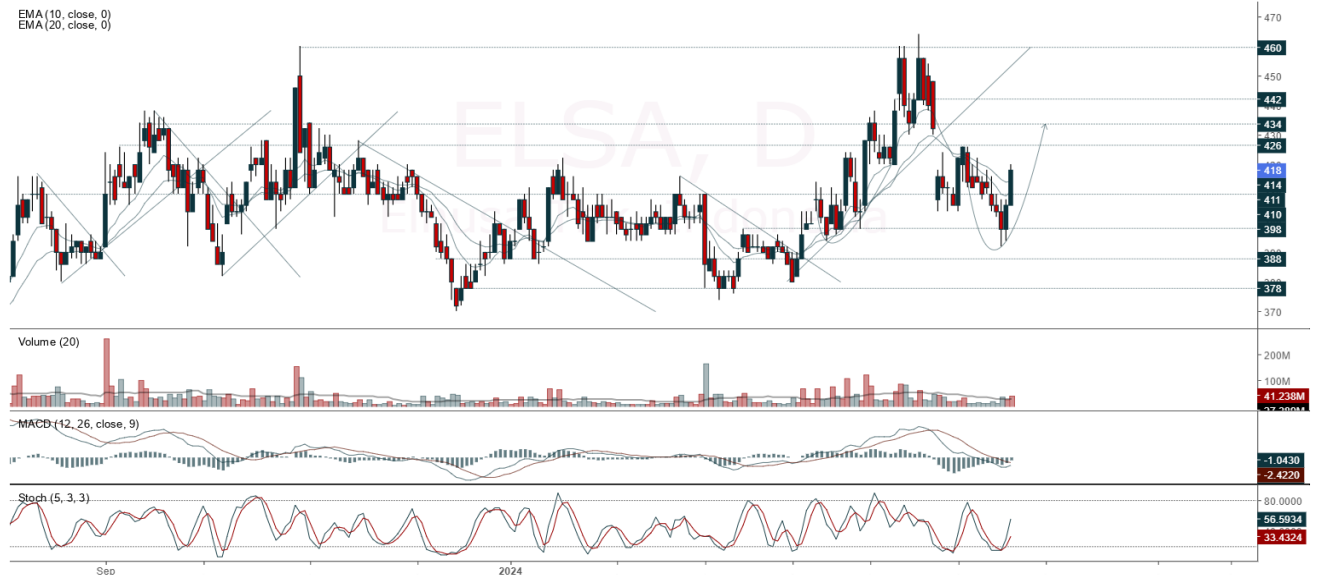
Support : 9,250 – 9,300

Cut loss : 9,225

ELSA

Elnusa Tbk, Indonesia, Jakarta:ELSA, D

EMA (10, close, 0)
EMA (20, close, 0)



(ELSA). Price closed higher and breakout resistance. Price has the opportunity strengthen to the next resistance. Stochastic is still bullish, MACD histogram is moving positive direction (line is golden cross potential) and volume is increasing. Confirm buy if the next candle returns bullish or buy on support if it goes down first. Be careful if you fail to stay above the support level or become a support breakdown.
(Trading Buy)

TRADING STRATEGY:

- 1. Target Price:** The price has a bullish opportunity to test the resistance level 426. If it breaks level 426 then the price will go to level 434. We recommend to be careful if the price fails to break through or turn around the support area.
- 2. Stop Loss:** To minimize the risk of loss, we recommend placing a stop loss at level 404.

Entry Buy : 410 – 418
Target Price : 426 – 434
Support : 406 – 410
Cut loss : 404

GJTL

Gajah Tunggal Tbk, Indonesia, Jakarta:GJTL, D

EMA (20, close, 0)
EMA (10, close, 0)



(GJTL). Price closed higher and breakout resistance. Price has the opportunity strengthen to the next resistance. Stochastic is golden cross, MACD histogram is moving positive direction (line is golden cross potential) and volume is decreasing. Confirm buy if the next candle returns bullish or buy on support if it goes down first. Be careful if you fail to stay above the support level or become a support breakdown.

(Trading Buy)

TRADING STRATEGY:

1. Target Price: The price has a bullish opportunity to test the resistance level 1,085. If it breaks level 1,085 then the price will go to level 1,105. We recommend to be careful if the price fails to break through or turn around the support area.

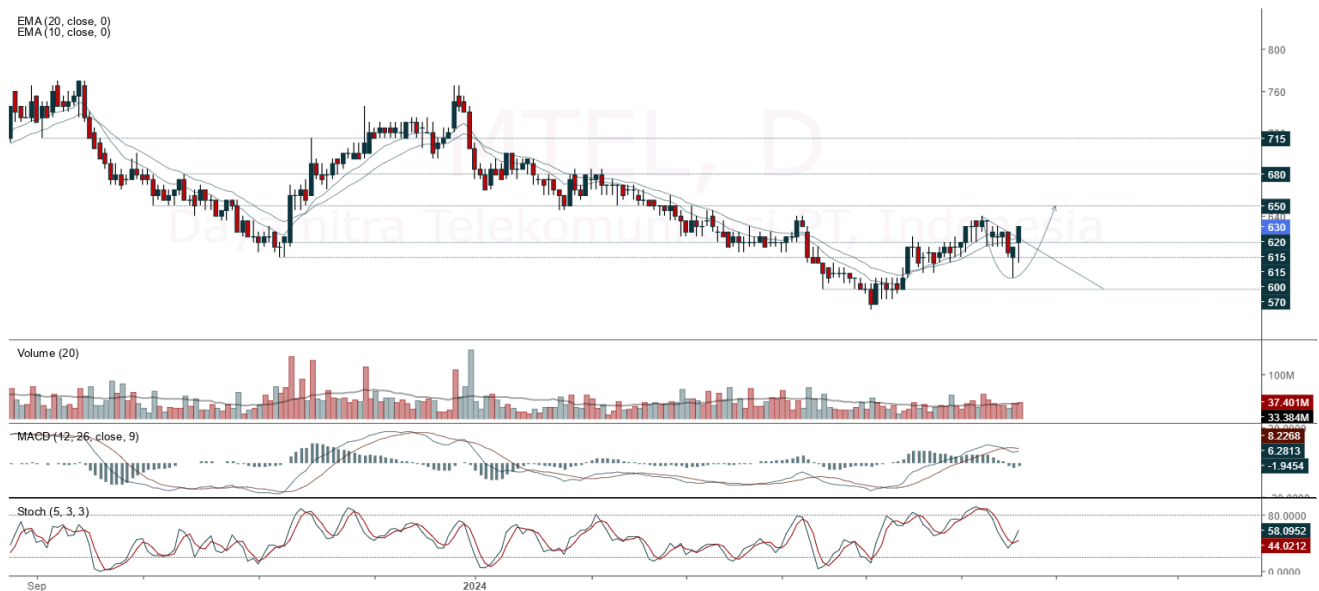
2. Stop Loss: To minimize the risk of loss, we recommend placing a stop loss at level 1,035.

- Entry Buy : 1,045 – 1,065
- Target Price : 1,085 – 1,105
- Support : 1,040 – 1,045
- Cut loss : 1,035

MTEL

Dayamitra Telekomunikasi PT, Indonesia, Jakarta:MTEL, D

EMA(20, close, 0)
EMA(10, close, 0)



(MTEL). Price closed higher and breakup minor trendline resistance. Price has the opportunity strengthen to the nearest resistance. Stochastic is bullish, MACD histogram is moving positive direction (line is golden cross potential) and volume is increasing. Confirm buy if the next candle returns bullish or buy on support if it goes down first. Be careful if you fail to stay above the support level or become a support breakdown. **(Trading Buy)**

TRADING STRATEGY:

1. **Target Price:** The price has a bullish opportunity to test the resistance level 640. If it breaks level 640 then the price will go to level 650. We recommend to be careful if the price fails to break through or turn around the support area.

2. **Stop Loss:** To minimize the risk of loss, we recommend placing a stop loss at level 610.

Entry Buy : 620 – 630
Target Price : 640 – 650
Support : 615 – 620
Cut loss : 610

Forecast – Technical Analysis

Ticker	MA5	RSI Rec	MACD Trend	Recomm.	Pivot Point	Support		Resistance		Stop Loss Level
						1	2	1	2	
JCI	Positive	Oversold	Negative	Spec. Buy	6,775	6,725	6,675	6,825	6,875	6,575
ACES	Positive	Trading	Positive	Spec. Buy	850	840	825	865	875	815
ADRO	Negative	Trading	Negative	Sell	2,705	2,675	2,635	2,745	2,775	2,595
AKRA	Positive	Trading	Positive	Spec. Buy	1,565	1,545	1,510	1,600	1,620	1,485
AMRT	Negative	Trading	Negative	Sell	11,875	11,675	11,425	12,125	12,325	11,250
ANTM	Positive	Trading	Negative	Hold	2,710	2,655	2,600	2,765	2,820	2,560
ARTO	Positive	Oversold	Negative	Spec. Buy	1,215	1,205	1,190	1,230	1,240	1,170
ASII	Positive	Oversold	Negative	Spec. Buy	1,930	1,900	1,860	1,970	2,000	1,835
BBCA	Negative	Trading	Positive	Hold	4,430	4,390	4,320	4,500	4,540	4,255
BBNI	Positive	Oversold	Negative	Spec. Buy	9,275	9,125	8,950	9,450	9,600	8,825
BBRI	Positive	Oversold	Negative	Spec. Buy	4,360	4,305	4,250	4,415	4,470	4,185
BBTN	Positive	Oversold	Positive	Buy	4,200	4,130	4,060	4,270	4,340	4,000
BMRI	Positive	Oversold	Negative	Spec. Buy	1,205	1,175	1,145	1,235	1,265	1,125
BRIS	Positive	Oversold	Negative	Spec. Buy	5,875	5,800	5,675	6,000	6,075	5,575
BRPT	Negative	Trading	Positive	Hold	2,440	2,405	2,380	2,465	2,500	2,340
BUKA	Positive	Oversold	Negative	Spec. Buy	920	895	880	935	960	865
CPIN	Positive	Trading	Negative	Hold	121	117	112	126	130	110
EMTK	Positive	Oversold	Negative	Spec. Buy	4,800	4,760	4,720	4,840	4,880	4,650
ESSA	Positive	Trading	Negative	Hold	775	750	725	800	825	715
EXCL	Positive	Oversold	Negative	Spec. Buy	2,145	2,110	2,085	2,170	2,205	2,055
GGRM	Positive	Trading	Negative	Hold	18,025	17,875	17,650	18,250	18,400	17,375
GOTO	Positive	Oversold	Negative	Spec. Buy	50	50	49	51	51	49
HRUM	Positive	Oversold	Negative	Spec. Buy	1,100	1,050	1,000	1,150	1,200	985
ICBP	Positive	Trading	Positive	Spec. Buy	10,150	10,075	9,925	10,300	10,375	9,775
INCO	Positive	Trading	Negative	Hold	4,105	4,050	3,985	4,170	4,225	3,925
INDF	Positive	Oversold	Negative	Spec. Buy	5,925	5,900	5,825	6,000	6,025	5,725
INKP	Positive	Trading	Negative	Hold	8,850	8,775	8,625	9,000	9,075	8,500
INTP	Positive	Trading	Positive	Spec. Buy	7,450	7,350	7,275	7,525	7,625	7,175
ITMG	Positive	Trading	Positive	Spec. Buy	10,200	10,100	10,000	10,300	10,400	9,850
KLBF	Positive	Oversold	Negative	Spec. Buy	23,925	23,825	23,775	23,975	24,075	23,400
MAPI	Negative	Trading	Negative	Sell	1,560	1,540	1,515	1,585	1,605	1,490
MBMA	Negative	Trading	Positive	Hold	1,370	1,325	1,280	1,415	1,460	1,260
MDKA	Positive	Trading	Negative	Hold	555	545	530	570	580	520
MEDC	Positive	Oversold	Negative	Spec. Buy	2,315	2,280	2,265	2,330	2,365	2,230
MTEL	Positive	Oversold	Negative	Spec. Buy	1,235	1,210	1,185	1,260	1,285	1,165
PGAS	Positive	Trading	Negative	Hold	620	605	585	640	655	575
PGEO	Positive	Trading	Negative	Hold	1,425	1,400	1,385	1,440	1,465	1,365
PTBA	Positive	Oversold	Negative	Spec. Buy	1,030	1,005	985	1,050	1,075	970
PTMP	Negative	Oversold	Positive	Spec. Buy	2,430	2,410	2,400	2,440	2,460	2,365
SIDO	Positive	Trading	Negative	Hold	735	715	700	750	770	690
SMGR	Positive	Oversold	Positive	Buy	3,545	3,460	3,415	3,590	3,675	3,365
SRTG	Positive	Oversold	Negative	Spec. Buy	1,245	1,225	1,200	1,270	1,290	1,185
TLKM	Positive	Oversold	Negative	Spec. Buy	2,835	2,820	2,785	2,870	2,885	2,745
TOWR	Positive	Oversold	Negative	Spec. Buy	680	675	665	690	695	655
UNTR	Positive	Oversold	Negative	Spec. Buy	21,750	21,450	21,125	22,075	22,375	20,800
UNVR	Negative	Trading	Negative	Sell	3,045	2,990	2,895	3,140	3,195	2,850

OUR TEAM

Sukarno Alatas

Head of Equity Research

sukarno@kiwoom.co.id | 021 5010 5800**Abdul Azis Setyo Wibowo**

Equity Research Analyst

azis@kiwoom.co.id | 021 5010 5800**Miftahul Khaer**

Equity Research Analyst

khaer.miftahul@kiwoom.co.id | 021 5010 5800**Vicky Rosalinda**

Equity Research Analyst

vicky.rosalinda@kiwoom.co.id | 021 5010 5800**Wahyu Saputra**

Research Associate

wahyu.saputra@kiwoom.co.id | 021 5010 5800**OTHER DISCLOSURES**

All Kiwoom's research reports made available to clients are simultaneously available on our own website <http://www.kiwoom.co.id/>. Not all research content is redistributed, e-mailed or made available to third-party aggregators. For all research reports available on a particular stock, please contact your sales representative. Any data discrepancies in this report could be the result of different calculations and/or adjustments.

DISCLAIMER This report has been prepared and issued by PT Kiwoom Sekuritas Indonesia. Information has been obtained from sources believed to be reliable but Kiwoom Securities do not warrant its completeness or accuracy. Forward-looking information or statements in this report contain information that is based on forecast of future results, estimates of amounts not yet determinable, assumptions, and therefore involve known and unknown risks and uncertainties which may cause the actual results, performance or achievements of their subject matter to be materially different from current expectations.

To the fullest extent allowed by law, PT Kiwoom Sekuritas Indonesia shall not be liable for any direct, indirect or consequential losses, loss of profits, damages, costs or expenses incurred or suffered by any person or organization arising from reliance on or use of any information contained on this report. The information that we provide should not be construed in any manner whatsoever as, personalized advice.

No mention of a particular security in this report constitutes a recommendation to buy, sell or hold that or any security, or that any particular security, portfolio of securities, transaction or investment strategy is suitable for any specific person. This report is being supplied to you solely for your information and may not be reproduced by, further distributed to or published in whole or in part by, any other person.