

JCI Range Today 6,882 – 6,905 (Support), 7,036 – 7,052 (Resistance)



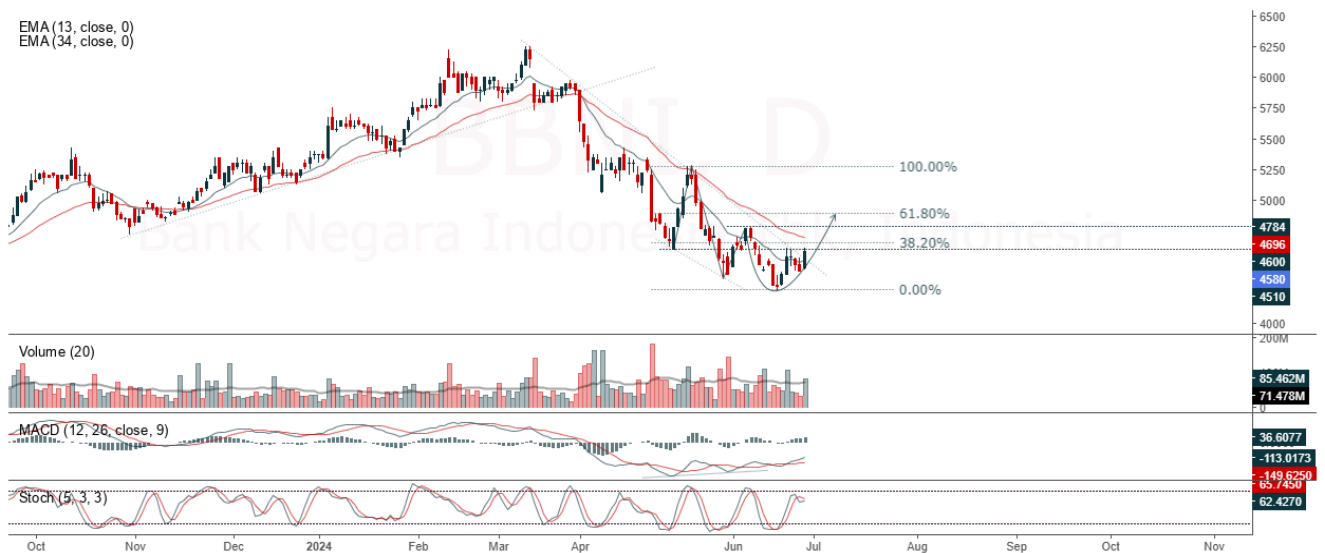
Jakarta Composite Index, Price closed positive and breakout resistance. Indicator from stochastic is still bullish, MACD histogram is moving positive (line is bullish) and volume is decreasing. Bearish scenario: If it moves bearish again, JCI is expected to weaken again to the support range of 6,882 – 6,905. Bullish scenario: If JCI is able to move bullish, JCI has the opportunity to break resistance 7,036 – 7,052.

Stock Pick Today: BBNI, HMSP, SILO, TOWR

BBNI

Bank Negara Indonesia Tbk, Indonesia, Jakarta:BBNI, D

EMA (13, close, 0)
EMA (34, close, 0)



(BBNI). Price closed higher and breakup trendline resistance. Price has the opportunity strengthen to the next resistance. Stochastic is golden cross potential, MACD histogram is moving positive (line is bullish) and volume is increasing. Confirm buy if the next candle returns bullish or buy on support if it goes down first. Be careful if you fail to stay above the support level or become a support breakdown.

(Trading Buy)

TRADING STRATEGY:

1. **Target Price:** The price has a bullish opportunity to test the resistance level 4,680. If it breaks level 4,680 then the price will go to level 4,760. We recommend to be careful if the price fails to break through or turn around the support area.

2. **Stop Loss:** To minimize the risk of loss, we recommend placing a stop loss at level 4,470.

Entry Buy : 4,520 – 4,580
Target Price : 4,680 – 4,760
Support : 4,480 – 4,520
Cut loss : 4,470

HMSP

Hanjaya Mandala Sampoerna Tbk PT, Indonesia, Jakarta:HMSP, D

EMA (13, close, 0)
EMA (34, close, 0)



(HMSP). Price closed negative with bearish candle. Price has the opportunity strengthen to the nearest resistance. Stochastic is bearish, MACD histogram is moving positive (line is bullish) and volume is increasing. Confirm buy if the next candle returns bullish or buy on support if it goes down first. Be careful if you fail to stay above the support level or become a support breakdown. **(Trading Buy)**

TRADING STRATEGY:

1. **Target Price:** The price has a bullish opportunity to test the resistance level 715. If it breaks level 715 then the price will go to level 725. We recommend to be careful if the price fails to break through or turn around the support area.

2. **Stop Loss:** To minimize the risk of loss, we recommend placing a stop loss at level 680.

Entry Buy : 690 – 700
Target Price : 715 – 725
Support : 685 – 690
Cut loss : 680

SILO

Siloam International Hospitals, Indonesia, Jakarta:SILO, D

EMA(13, close, 0)
EMA(34, close, 0)



(SILO). Price closed higher and breakout resistance. Price has the opportunity strengthen to the next resistance. Stochastic is still bullish, MACD histogram is moving positive (line is golden cross) and volume is increasing significantly. Confirm buy if the next candle returns bullish or buy on support if it goes down first. Be careful if you fail to stay above the support level or become a support breakdown.
(Trading Buy)

TRADING STRATEGY:

1. **Target Price:** The price has a bullish opportunity to test the resistance level 2,770. If it breaks level 2,770 then the price will go to level 2,820. We recommend to be careful if the price fails to break through or turn around the support area.

2. **Stop Loss:** To minimize the risk of loss, we recommend placing a stop loss at level 2,640.

Entry Buy : 2,670 – 2,720
Target Price : 2,770 – 2,820
Support : 2,650 – 2,670
Cut loss : 2,640

TOWR

Sarana Menara Nusantara Tbk, Indonesia, Jakarta:TOWR, D

EMA (13, close, 0)
EMA (34, close, 0)



(TOWR). Price closed higher and breakup trendline resistance. Price has the opportunity strengthen to the next resistance. Stochastic is golden cross, MACD histogram is moving positive (line is bullish) and volume is increasing. Confirm buy if the next candle returns bullish or buy on support if it goes down first. Be careful if you fail to stay above the support level or become a support breakdown. **(Trading Buy)**

TRADING STRATEGY:

1. **Target Price:** The price has a bullish opportunity to test the resistance level 730. If it breaks level 730 then the price will go to level 740. We recommend to be careful if the price fails to break through or turn around the support area.

2. **Stop Loss:** To minimize the risk of loss, we recommend placing a stop loss at level 695.

Entry Buy : 705 – 715

Target Price : 730 – 740

Support : 700 – 705

Cut loss : 695

Forecast – Technical Analysis

Ticker	MA5	RSI Rec	MACD Trend	Recomm.	Pivot Point	Support		Resistance		Stop Loss Level
						1	2	1	2	
JCI	Negative	Trading	Positive	Hold	6,950	6,925	6,900	6,975	7,000	6,800
ACES	Positive	Trading	Positive	Spec. Buy	850	840	830	860	870	820
ADRO	Negative	Trading	Negative	Sell	2,750	2,720	2,690	2,780	2,810	2,650
AKRA	Negative	Trading	Positive	Hold	1,640	1,635	1,620	1,655	1,660	1,595
AMRT	Positive	Trading	Negative	Hold	11,375	11,050	10,750	11,675	12,000	10,600
ANTM	Positive	Trading	Positive	Spec. Buy	2,725	2,695	2,665	2,755	2,785	2,625
ARTO	Negative	Oversold	Positive	Spec. Buy	1,215	1,200	1,185	1,230	1,245	1,165
ASII	Negative	Trading	Positive	Hold	2,225	2,175	2,145	2,255	2,305	2,110
BBCA	Positive	Trading	Positive	Spec. Buy	4,425	4,410	4,385	4,450	4,465	4,320
BBNI	Negative	Trading	Positive	Hold	9,650	9,575	9,450	9,775	9,850	9,325
BBRI	Negative	Trading	Positive	Hold	4,520	4,425	4,340	4,605	4,700	4,270
BBTN	Negative	Trading	Positive	Hold	4,440	4,375	4,320	4,495	4,560	4,255
BMRI	Negative	Trading	Positive	Hold	1,260	1,245	1,235	1,270	1,285	1,215
BRIS	Negative	Trading	Positive	Hold	5,975	5,850	5,775	6,050	6,175	5,675
BRPT	Negative	Overbought	Positive	Sell	2,555	2,500	2,465	2,590	2,645	2,430
BUKA	Negative	Trading	Negative	Sell	965	950	940	975	990	925
CPIN	Negative	Trading	Positive	Hold	131	124	118	137	144	116
EMTK	Negative	Trading	Negative	Sell	5,100	5,025	4,965	5,150	5,225	4,890
ESSA	Positive	Trading	Negative	Hold	760	750	735	775	785	725
EXCL	Negative	Trading	Negative	Sell	2,195	2,170	2,145	2,220	2,245	2,115
GGRM	Negative	Trading	Negative	Sell	18,400	18,275	18,075	18,600	18,725	17,800
GOTO	Negative	Oversold	Negative	Spec. Buy	50	50	50	50	50	49
HRUM	Positive	Trading	Negative	Hold	1,135	1,125	1,110	1,150	1,160	1,090
ICBP	Negative	Trading	Negative	Sell	10,475	10,325	10,200	10,600	10,750	10,025
INCO	Positive	Oversold	Negative	Spec. Buy	4,005	3,985	3,965	4,025	4,045	3,905
INDF	Negative	Oversold	Negative	Spec. Buy	6,000	5,925	5,875	6,050	6,125	5,775
INKP	Positive	Trading	Positive	Spec. Buy	9,025	8,900	8,775	9,150	9,275	8,650
INTP	Positive	Trading	Positive	Spec. Buy	7,325	7,175	7,075	7,425	7,575	6,950
ITMG	Negative	Trading	Positive	Hold	10,375	10,325	10,225	10,475	10,525	10,075
KLBF	Positive	Trading	Negative	Hold	23,750	23,675	23,550	23,875	23,950	23,200
MAPI	Positive	Trading	Negative	Hold	1,545	1,530	1,520	1,555	1,570	1,495
MBMA	Negative	Trading	Positive	Hold	1,450	1,405	1,365	1,490	1,535	1,345
MDKA	Negative	Trading	Negative	Sell	610	585	570	625	650	560
MEDC	Negative	Oversold	Negative	Spec. Buy	2,350	2,310	2,280	2,380	2,420	2,245
MTEL	Negative	Trading	Positive	Hold	1,315	1,310	1,295	1,330	1,335	1,275
PGAS	Negative	Overbought	Positive	Sell	650	640	630	660	670	620
PGEO	Negative	Trading	Positive	Hold	1,540	1,535	1,520	1,555	1,560	1,500
PTBA	Negative	Trading	Positive	Hold	1,195	1,180	1,170	1,205	1,220	1,150
PTMP	Negative	Oversold	Positive	Spec. Buy	2,435	2,425	2,415	2,445	2,455	2,375
SIDO	Negative	Trading	Positive	Hold	765	750	735	780	795	725
SMGR	Negative	Oversold	Positive	Spec. Buy	3,620	3,560	3,490	3,690	3,750	3,440
SRTG	Negative	Oversold	Negative	Spec. Buy	1,320	1,280	1,235	1,365	1,405	1,220
TLKM	Negative	Trading	Positive	Hold	3,020	3,010	2,980	3,050	3,060	2,935
TOWR	Negative	Oversold	Positive	Spec. Buy	700	685	665	720	735	655
UNTR	Positive	Trading	Positive	Spec. Buy	21,725	21,675	21,525	21,875	21,925	21,200
UNVR	Positive	Trading	Negative	Hold	3,055	3,010	2,965	3,100	3,145	2,920

OUR TEAM

Sukarno Alatas

Head of Equity Research

sukarno@kiwoom.co.id | 021 5010 5800**Abdul Azis Setyo Wibowo**

Equity Research Analyst

azis@kiwoom.co.id | 021 5010 5800**Miftahul Khaer**

Equity Research Analyst

khaer.miftahul@kiwoom.co.id | 021 5010 5800**Vicky Rosalinda**

Equity Research Analyst

vicky.rosalinda@kiwoom.co.id | 021 5010 5800**Wahyu Saputra**

Research Associate

wahyu.saputra@kiwoom.co.id | 021 5010 5800**OTHER DISCLOSURES**

All Kiwoom's research reports made available to clients are simultaneously available on our own website <http://www.kiwoom.co.id/>. Not all research content is redistributed, e-mailed or made available to third-party aggregators. For all research reports available on a particular stock, please contact your sales representative. Any data discrepancies in this report could be the result of different calculations and/or adjustments.

DISCLAIMER This report has been prepared and issued by PT Kiwoom Sekuritas Indonesia. Information has been obtained from sources believed to be reliable but Kiwoom Securities do not warrant its completeness or accuracy. Forward-looking information or statements in this report contain information that is based on forecast of future results, estimates of amounts not yet determinable, assumptions, and therefore involve known and unknown risks and uncertainties which may cause the actual results, performance or achievements of their subject matter to be materially different from current expectations.

To the fullest extent allowed by law, PT Kiwoom Sekuritas Indonesia shall not be liable for any direct, indirect or consequential losses, loss of profits, damages, costs or expenses incurred or suffered by any person or organization arising from reliance on or use of any information contained on this report. The information that we provide should not be construed in any manner whatsoever as, personalized advice.

No mention of a particular security in this report constitutes a recommendation to buy, sell or hold that or any security, or that any particular security, portfolio of securities, transaction or investment strategy is suitable for any specific person. This report is being supplied to you solely for your information and may not be reproduced by, further distributed to or published in whole or in part by, any other person.