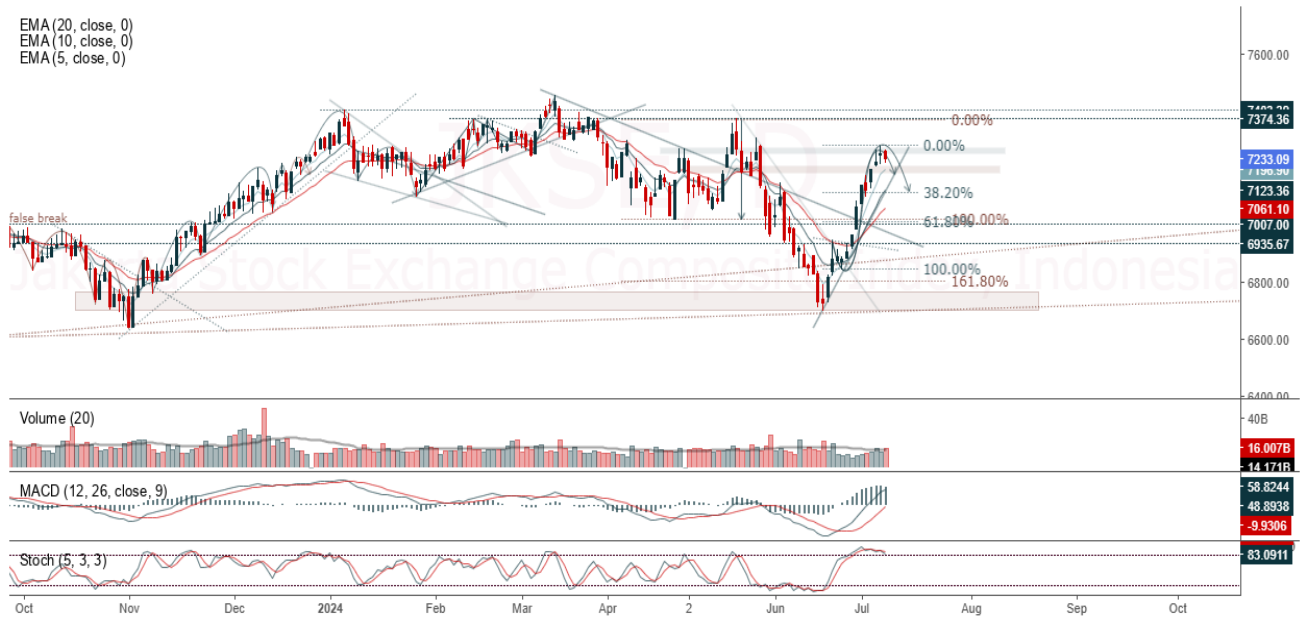


JCI Range Today 7,176 – 7,196 (Support), 7,308 – 7,328 (Resistance)

Jakarta Stock Exchange Composite Index, Indonesia, Jakarta:JKSE, D

EMA (20, close, 0)
EMA (10, close, 0)
EMA (5, close, 0)



Jakarta Composite Index, Price closed negative with doji candle. Indicator from stochastic is back to bearish, MACD histogram is moving positive (line is bullish) and volume is increasing. Bearish scenario: If it moves bearish again, JCI is expected to weaken again to the support range of 7,176 – 7,196. Bullish scenario: If JCI is able to move bullish, JCI has the opportunity to break resistance 7,308 – 7,328.

Stock Pick Today: ACES, ANTM, BSDE, SMGR

ACES

Ace Hardware Indonesia Tbk, Indonesia, Jakarta:ACES, D

EMA (13, close, 0)
EMA (34, close, 0)



(ACES). Price closed higher and breakup trendline resistance. Price has the opportunity strengthen to the nearest resistance. Stochastic is bullish, MACD histogram is moving positive (line is golden cross) and volume is increasing. Confirm buy if the next candle returns bullish or buy on support if it goes down first. Be careful if you fail to stay above the support level or become a support breakdown.

(Trading Buy)

TRADING STRATEGY:

1. **Target Price:** The price has a bullish opportunity to test the resistance level 865. If it breaks level 865 then the price will go to level 880. We recommend to be careful if the price fails to break through or turn around the support area.

2. **Stop Loss:** To minimize the risk of loss, we recommend placing a stop loss at level 825.

Entry Buy : 835 – 850
Target Price : 865 – 880
Support : 830 – 835
Cut loss : 825

ANTM

Aneka Tambang Persero Tbk, Indonesia, Jakarta:ANTM, D



(ANTM). Price closed higher and breakout resistance. Price has the opportunity strengthen to the next resistance. Stochastic is golden cross potential, MACD histogram is moving positive (line is bullish) and volume is increasing. Confirm buy if the next candle returns bullish or buy on support if it goes down first. Be careful if you fail to stay above the support level or become a support breakdown. **(Trading Buy)**

TRADING STRATEGY:

1. Target Price: The price has a bullish opportunity to test the resistance level 1,390. If it breaks level 1,390 then the price will go to level 1,415. We recommend to be careful if the price fails to break through or turn around the support area.
2. Stop Loss: To minimize the risk of loss, we recommend placing a stop loss at level 1,325.

Entry Buy : 1,340 – 1,365
 Target Price : 1,390 – 1,415
 Support : 1,330 – 1,340
 Cut loss : 1,325

BSDE

Bumi Serpong Damai Tbk, Indonesia, Jakarta:BSDE, D

EMA (13, close, 0)
EMA (34, close, 0)



(BSDE). Price closed higher and breakout resistance. Price has the opportunity strengthen to the next resistance. Stochastic is golden cross, MACD histogram is moving positive (line is bullish) and volume is increasing. Confirm buy if the next candle returns bullish or buy on support if it goes down first. Be careful if you fail to stay above the support level or become a support breakdown. **(Trading Buy)**

TRADING STRATEGY:

1. **Target Price:** The price has a bullish opportunity to test the resistance level 1,005. If it breaks level 1,005 then the price will go to level 1,020. We recommend to be careful if the price fails to break through or turn around the support area.

2. **Stop Loss:** To minimize the risk of loss, we recommend placing a stop loss at level 960.

Entry Buy : 970 – 985
Target Price : 1,005 – 1,020
Support : 965 – 970
Cut loss : 960

SMGR

Semen Indonesia Persero Tbk, Indonesia, Jakarta:SMGR, D

EMA (13, close, 0)
EMA (34, close, 0)



(SMGR). Price closed higher and breakout resistance. Price has the opportunity strengthen to the next resistance. Stochastic is golden cross potential, MACD histogram is moving positive (line is bullish) and volume is increasing. Confirm buy if the next candle returns bullish or buy on support if it goes down first. Be careful if you fail to stay above the support level or become a support breakdown. **(Trading Buy)**

TRADING STRATEGY:

1. **Target Price:** The price has a bullish opportunity to test the resistance level 4,280. If it breaks level 4,280 then the price will go to level 4,340. We recommend to be careful if the price fails to break through or turn around the support area.

2. **Stop Loss:** To minimize the risk of loss, we recommend placing a stop loss at level 4,090.

Entry Buy : 4,120 – 4,200

Target Price : 4,280 – 4,340

Support : 4,100 – 4,120

Cut loss : 4,090

Forecast – Technical Analysis

Ticker	MA5	RSI Rec	MACD Trend	Recomm.	Pivot Point	Support		Resistance		Stop Loss Level
						1	2	1	2	
JCI	Negative	Overbought	Positive	Sell	7,250	7,225	7,200	7,275	7,300	7,100
ACES	Positive	Trading	Negative	Hold	845	835	830	850	860	815
ADRO	Negative	Overbought	Positive	Sell	2,900	2,890	2,870	2,920	2,930	2,825
AKRA	Positive	Oversold	Negative	Spec. Buy	1,530	1,500	1,445	1,585	1,615	1,425
AMMN	Positive	Trading	Negative	Hold	11,275	11,000	10,625	11,650	11,925	10,475
AMRT	Negative	Trading	Positive	Hold	2,815	2,775	2,735	2,855	2,895	2,690
ANTM	Negative	Trading	Positive	Hold	1,340	1,315	1,290	1,365	1,390	1,270
ARTO	Positive	Trading	Positive	Spec. Buy	2,295	2,225	2,165	2,355	2,425	2,130
ASII	Positive	Trading	Positive	Spec. Buy	4,610	4,580	4,530	4,660	4,690	4,460
BBCA	Negative	Overbought	Positive	Sell	10,025	9,975	9,925	10,075	10,125	9,775
BBNI	Positive	Trading	Positive	Spec. Buy	4,705	4,665	4,635	4,735	4,775	4,565
BBRI	Negative	Overbought	Positive	Sell	4,780	4,730	4,690	4,820	4,870	4,620
BBTN	Negative	Trading	Positive	Hold	1,290	1,270	1,240	1,320	1,340	1,220
BMRI	Negative	Overbought	Positive	Sell	6,325	6,200	6,100	6,425	6,550	6,000
BRIS	Positive	Trading	Positive	Spec. Buy	2,470	2,440	2,400	2,510	2,540	2,365
BRPT	Negative	Overbought	Positive	Sell	1,155	1,100	1,040	1,215	1,270	1,020
BUKA	Negative	Trading	Positive	Hold	139	136	132	143	146	130
CPIN	Negative	Trading	Positive	Hold	5,275	5,250	5,150	5,375	5,400	5,075
ESSA	Negative	Trading	Positive	Hold	810	790	775	825	845	765
EXCL	Negative	Trading	Positive	Hold	2,195	2,175	2,145	2,225	2,245	2,110
GGRM	Positive	Oversold	Negative	Spec. Buy	17,275	17,225	17,075	17,425	17,475	16,825
GOTO	Negative	Oversold	Positive	Spec. Buy	50	50	50	50	50	49
HRUM	Positive	Trading	Positive	Spec. Buy	1,200	1,190	1,180	1,210	1,220	1,160
ICBP	Positive	Trading	Negative	Hold	10,350	10,275	10,225	10,400	10,475	10,050
INCO	Positive	Trading	Negative	Hold	4,065	4,015	3,965	4,115	4,165	3,905
INDF	Negative	Trading	Positive	Hold	6,175	6,125	6,100	6,200	6,250	6,000
INKP	Positive	Trading	Positive	Spec. Buy	8,825	8,700	8,550	8,975	9,100	8,425
INTP	Negative	Trading	Positive	Hold	7,575	7,300	7,075	7,800	8,075	6,950
ISAT	Positive	Trading	Positive	Spec. Buy	10,450	10,375	10,275	10,550	10,625	10,100
ITMG	Negative	Overbought	Positive	Sell	26,075	25,825	25,600	26,300	26,550	25,200
KLBF	Positive	Trading	Negative	Hold	1,530	1,505	1,470	1,565	1,590	1,450
MAPI	Positive	Trading	Positive	Spec. Buy	1,400	1,395	1,385	1,410	1,415	1,365
MBMA	Positive	Trading	Positive	Spec. Buy	620	610	590	640	650	580
MDKA	Positive	Trading	Positive	Spec. Buy	2,480	2,440	2,400	2,520	2,560	2,365
MEDC	Negative	Trading	Positive	Hold	1,380	1,360	1,340	1,400	1,420	1,315
MTEL	Negative	Trading	Positive	Hold	675	650	620	705	730	610
PGAS	Negative	Overbought	Positive	Sell	1,615	1,600	1,585	1,630	1,645	1,560
PGEO	Positive	Trading	Positive	Spec. Buy	1,235	1,220	1,205	1,250	1,265	1,185
PTBA	Negative	Trading	Positive	Hold	2,545	2,530	2,515	2,560	2,575	2,475
SIDO	Positive	Trading	Negative	Hold	750	745	730	765	770	720
SMGR	Negative	Trading	Positive	Hold	4,080	3,940	3,810	4,210	4,350	3,755
SRTG	Positive	Trading	Positive	Spec. Buy	1,465	1,430	1,415	1,480	1,515	1,390
TLKM	Positive	Trading	Positive	Spec. Buy	3,055	3,015	2,965	3,105	3,145	2,920
TOWR	Negative	Trading	Positive	Hold	745	730	715	760	775	700
UNTR	Negative	Overbought	Positive	Sell	23,875	23,750	23,500	24,125	24,250	23,150
UNVR	Positive	Trading	Negative	Hold	2,985	2,920	2,855	3,050	3,115	2,810

OUR TEAM

Sukarno Alatas

Head of Equity Research

sukarno@kiwoom.co.id | 021 5010 5800**Abdul Azis Setyo Wibowo**

Equity Research Analyst

azis@kiwoom.co.id | 021 5010 5800**Miftahul Khaer**

Equity Research Analyst

khaer.miftahul@kiwoom.co.id | 021 5010 5800**Vicky Rosalinda**

Equity Research Analyst

vicky.rosalinda@kiwoom.co.id | 021 5010 5800**Wahyu Saputra**

Research Associate

wahyu.saputra@kiwoom.co.id | 021 5010 5800**OTHER DISCLOSURES**

All Kiwoom's research reports made available to clients are simultaneously available on our own website <http://www.kiwoom.co.id/>. Not all research content is redistributed, e-mailed or made available to third-party aggregators. For all research reports available on a particular stock, please contact your sales representative. Any data discrepancies in this report could be the result of different calculations and/or adjustments.

DISCLAIMER This report has been prepared and issued by PT Kiwoom Sekuritas Indonesia. Information has been obtained from sources believed to be reliable but Kiwoom Securities do not warrant its completeness or accuracy. Forward-looking information or statements in this report contain information that is based on forecast of future results, estimates of amounts not yet determinable, assumptions, and therefore involve known and unknown risks and uncertainties which may cause the actual results, performance or achievements of their subject matter to be materially different from current expectations.

To the fullest extent allowed by law, PT Kiwoom Sekuritas Indonesia shall not be liable for any direct, indirect or consequential losses, loss of profits, damages, costs or expenses incurred or suffered by any person or organization arising from reliance on or use of any information contained on this report. The information that we provide should not be construed in any manner whatsoever as, personalized advice.

No mention of a particular security in this report constitutes a recommendation to buy, sell or hold that or any security, or that any particular security, portfolio of securities, transaction or investment strategy is suitable for any specific person. This report is being supplied to you solely for your information and may not be reproduced by, further distributed to or published in whole or in part by, any other person.