

JCI Range Today 7,220 – 7,239 (Support), 7,313 – 7,338 (Resistance)

Jakarta Stock Exchange Composite Index, Indonesia, Jakarta:JKSE, D

EMA (20, close, 0)
EMA (10, close, 0)
EMA (5, close, 0)



Jakarta Composite Index, Price closed positive and false break at 7,308. Indicator from stochastic is still bearish, MACD histogram is moving positive (line is bullish) and volume is increasing. Bearish scenario: If it moves bearish again, JCI is expected to weaken again to the support range of 7,220 – 7,239. Bullish scenario: If JCI is able to move bullish, JCI has the opportunity to break resistance 7,313 – 7,338.

Stock Pick Today: PGEO, PRDA, TLKM, TPIA

PGEO

PT Pertamina Geothermal Energy, Indonesia, Jakarta:PGEO, D



(PGEO). Price closed higher and breakup trendline resistance. Price has the opportunity strengthen to the next resistance. Stochastic is neutral, MACD histogram is moving positive (line is bullish) and volume is increasing. Confirm buy if the next candle returns bullish or buy on support if it goes down first. Be careful if you fail to stay above the support level or become a support breakdown. **(Trading Buy)**

TRADING STRATEGY:

1. **Target Price:** The price has a bullish opportunity to test the resistance level 1,285. If it breaks level 1,285 then the price will go to level 1,305. We recommend to be careful if the price fails to break through or turn around the support area.

2. **Stop Loss:** To minimize the risk of loss, we recommend placing a stop loss at level 1,225.

Entry Buy : 1,240 – 1,260

Target Price : 1,285 – 1,305

Support : 1,230 – 1,240

Cut loss : 1,225

PRDA

Prodia Widyahusada Tbk PT, Indonesia, Jakarta:PRDA, D

EMA (13, close, 0)
EMA (34, close, 0)



(PRDA). Price closed higher and breakout resistance. Price has the opportunity strengthen to the next resistance. Stochastic is still bearish, MACD histogram is moving positive (line is bullish) and volume is increasing. Confirm buy if the next candle returns bullish or buy on support if it goes down first. Be careful if you fail to stay above the support level or become a support breakdown. **(Trading Buy)**

TRADING STRATEGY:

- 1. Target Price:** The price has a bullish opportunity to test the resistance level 3,000. If it breaks level 3,000 then the price will go to level 3,050. We recommend to be careful if the price fails to break through or turn around the support area.
- 2. Stop Loss:** To minimize the risk of loss, we recommend placing a stop loss at level 2,870.

Entry Buy : 2,900 – 2,940
 Target Price : 3,000 – 3,050
 Support : 2,880 – 2,900
 Cut loss : 2,870

TLKM

Telkom Indonesia (Persero) Tbk PT, Indonesia, Jakarta:TLKM, D

EMA
EMA



(TLKM). Price closed higher and breakout resistance. Price has the opportunity strengthen to the next resistance. Stochastic is still bullish, MACD histogram is moving positive (line is bullish) and volume is increasing. Confirm buy if the next candle returns bullish or buy on support if it goes down first. Be careful if you fail to stay above the support level or become a support breakdown. **(Trading Buy)**

TRADING STRATEGY:

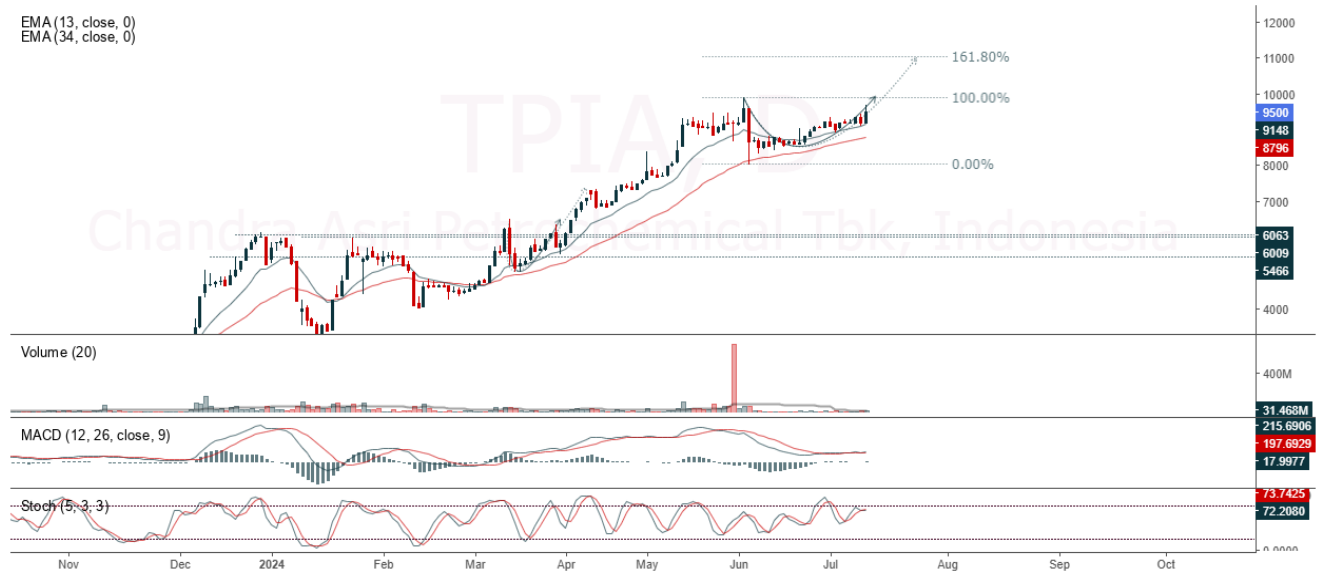
1. **Target Price:** The price has a bullish opportunity to test the resistance level 3,220. If it breaks level 3,220 then the price will go to level 3,280. We recommend to be careful if the price fails to break through or turn around the support area.
2. **Stop Loss:** To minimize the risk of loss, we recommend placing a stop loss at level 3,070.

Entry Buy : 3,100 – 3,160
 Target Price : 3,220 – 3,280
 Support : 3,080 – 3,100
 Cut loss : 3,070

TPIA

Chandra Asri Petrochemical Tbk, Indonesia, Jakarta:TPIA, D

EMA (13, close, 0)
EMA (34, close, 0)



(TPIA). Price closed higher with bullish candle. Price has the opportunity strengthen to the nearest resistance. Stochastic is bearish, MACD histogram is moving positive (line is bullish) and volume is increasing. Confirm buy if the next candle returns bullish or buy on support if it goes down first. Be careful if you fail to stay above the support level or become a support breakdown. **(Trading Buy)**

TRADING STRATEGY:

1. **Target Price:** The price has a bullish opportunity to test the resistance level 9,700. If it breaks level 9,700 then the price will go to level 9,875. We recommend to be careful if the price fails to break through or turn around the support area.

2. **Stop Loss:** To minimize the risk of loss, we recommend placing a stop loss at level 9,225.

Entry Buy : 9,350 – 9,500
Target Price : 9,700 – 9,875
Support : 9,250 – 9,350
Cut loss : 9,225

Forecast – Technical Analysis

Ticker	MA5	RSI Rec	MACD Trend	Recomm.	Pivot Point	Support		Resistance		Stop Loss Level
						1	2	1	2	
JCI	Negative	Overbought	Positive	Sell	7,300	7,275	7,250	7,300	7,325	7,150
ACES	Negative	Trading	Positive	Hold	835	825	815	845	855	805
ADRO	Negative	Overbought	Positive	Sell	2,905	2,875	2,855	2,925	2,955	2,810
AKRA	Positive	Oversold	Negative	Spec. Buy	1,510	1,495	1,490	1,515	1,530	1,465
AMMN	Positive	Trading	Negative	Hold	11,225	11,100	10,950	11,375	11,500	10,800
AMRT	Negative	Overbought	Positive	Sell	2,890	2,865	2,830	2,925	2,950	2,785
ANTM	Negative	Trading	Positive	Hold	1,350	1,340	1,330	1,360	1,370	1,310
ARTO	Positive	Trading	Positive	Spec. Buy	2,330	2,255	2,160	2,425	2,500	2,125
ASII	Negative	Trading	Positive	Hold	4,555	4,525	4,495	4,585	4,615	4,425
BBCA	Negative	Overbought	Positive	Sell	10,150	10,050	9,975	10,225	10,325	9,825
BBNI	Negative	Trading	Positive	Hold	4,850	4,795	4,770	4,875	4,930	4,695
BBRI	Negative	Overbought	Positive	Sell	4,870	4,820	4,790	4,900	4,950	4,720
BBTN	Negative	Trading	Positive	Hold	1,295	1,275	1,260	1,310	1,330	1,240
BMRI	Negative	Trading	Positive	Hold	6,375	6,300	6,225	6,450	6,525	6,125
BRIS	Positive	Trading	Positive	Spec. Buy	2,505	2,460	2,425	2,540	2,585	2,390
BRPT	Positive	Trading	Positive	Spec. Buy	1,115	1,085	1,055	1,145	1,175	1,040
BUKA	Negative	Trading	Positive	Hold	136	132	126	142	146	124
CPIN	Negative	Overbought	Positive	Sell	5,350	5,275	5,175	5,450	5,525	5,100
ESSA	Negative	Overbought	Positive	Sell	865	815	785	895	945	775
EXCL	Negative	Trading	Positive	Hold	2,270	2,245	2,220	2,295	2,320	2,185
GGRM	Positive	Oversold	Negative	Spec. Buy	17,375	17,250	17,200	17,425	17,550	16,925
GOTO	Negative	Oversold	Positive	Spec. Buy	50	50	49	51	51	49
HRUM	Negative	Trading	Positive	Hold	1,230	1,210	1,195	1,245	1,265	1,175
ICBP	Negative	Trading	Positive	Hold	10,300	10,250	10,175	10,375	10,425	10,000
INCO	Positive	Trading	Positive	Spec. Buy	4,000	3,965	3,950	4,015	4,050	3,890
INDF	Positive	Trading	Positive	Spec. Buy	6,000	5,950	5,925	6,025	6,075	5,825
INKP	Positive	Trading	Positive	Spec. Buy	8,800	8,700	8,600	8,900	9,000	8,475
INTP	Positive	Trading	Positive	Spec. Buy	7,550	7,125	6,875	7,800	8,225	6,750
ISAT	Negative	Trading	Positive	Hold	10,825	10,525	10,250	11,100	11,400	10,100
ITMG	Negative	Trading	Positive	Hold	25,650	25,400	25,275	25,775	26,025	24,900
KLBF	Negative	Trading	Negative	Sell	1,540	1,530	1,515	1,555	1,565	1,490
MAPI	Positive	Trading	Positive	Spec. Buy	1,410	1,400	1,390	1,420	1,430	1,370
MBMA	Negative	Trading	Positive	Hold	630	620	610	640	650	600
MDKA	Negative	Trading	Positive	Hold	2,430	2,395	2,360	2,465	2,500	2,320
MEDC	Negative	Trading	Positive	Hold	1,340	1,325	1,305	1,360	1,375	1,285
MTEL	Negative	Overbought	Positive	Sell	675	665	655	685	695	645
PGAS	Positive	Trading	Positive	Spec. Buy	1,525	1,505	1,485	1,545	1,565	1,460
PGEO	Negative	Trading	Positive	Hold	1,245	1,220	1,195	1,270	1,295	1,175
PTBA	Negative	Trading	Positive	Hold	2,540	2,520	2,510	2,550	2,570	2,470
SIDO	Negative	Trading	Negative	Sell	740	735	720	755	760	710
SMGR	Negative	Overbought	Positive	Sell	4,185	3,915	3,785	4,315	4,585	3,725
SRTG	Negative	Trading	Positive	Hold	1,470	1,450	1,435	1,485	1,505	1,415
TLKM	Negative	Trading	Positive	Hold	3,130	3,080	3,040	3,170	3,220	2,995
TOWR	Negative	Overbought	Positive	Sell	780	775	760	795	800	745
UNTR	Negative	Overbought	Positive	Sell	23,650	23,400	23,175	23,875	24,125	22,825
UNVR	Negative	Trading	Negative	Sell	2,980	2,950	2,920	3,010	3,040	2,875

OUR TEAM

Sukarno Alatas

Head of Equity Research

sukarno@kiwoom.co.id | 021 5010 5800

Abdul Azis Setyo Wibowo

Equity Research Analyst

azis@kiwoom.co.id | 021 5010 5800

Miftahul Khaer

Equity Research Analyst

khaer.miftahul@kiwoom.co.id | 021 5010 5800

Vicky Rosalinda

Equity Research Analyst

vicky.rosalinda@kiwoom.co.id | 021 5010 5800

Wahyu Saputra

Research Associate

wahyu.saputra@kiwoom.co.id | 021 5010 5800



OTHER DISCLOSURES

All Kiwoom's research reports made available to clients are simultaneously available on our own website <http://www.kiwoom.co.id/>. Not all research content is redistributed, e-mailed or made available to third-party aggregators. For all research reports available on a particular stock, please contact your sales representative. Any data discrepancies in this report could be the result of different calculations and/or adjustments.

DISCLAIMER This report has been prepared and issued by PT Kiwoom Sekuritas Indonesia. Information has been obtained from sources believed to be reliable but Kiwoom Securities do not warrant its completeness or accuracy. Forward-looking information or statements in this report contain information that is based on forecast of future results, estimates of amounts not yet determinable, assumptions, and therefore involve known and unknown risks and uncertainties which may cause the actual results, performance or achievements of their subject matter to be materially different from current expectations.

To the fullest extent allowed by law, PT Kiwoom Sekuritas Indonesia shall not be liable for any direct, indirect or consequential losses, loss of profits, damages, costs or expenses incurred or suffered by any person or organization arising from reliance on or use of any information contained on this report. The information that we provide should not be construed in any manner whatsoever as, personalized advice.

No mention of a particular security in this report constitutes a recommendation to buy, sell or hold that or any security, or that any particular security, portfolio of securities, transaction or investment strategy is suitable for any specific person. This report is being supplied to you solely for your information and may not be reproduced by, further distributed to or published in whole or in part by, any other person.