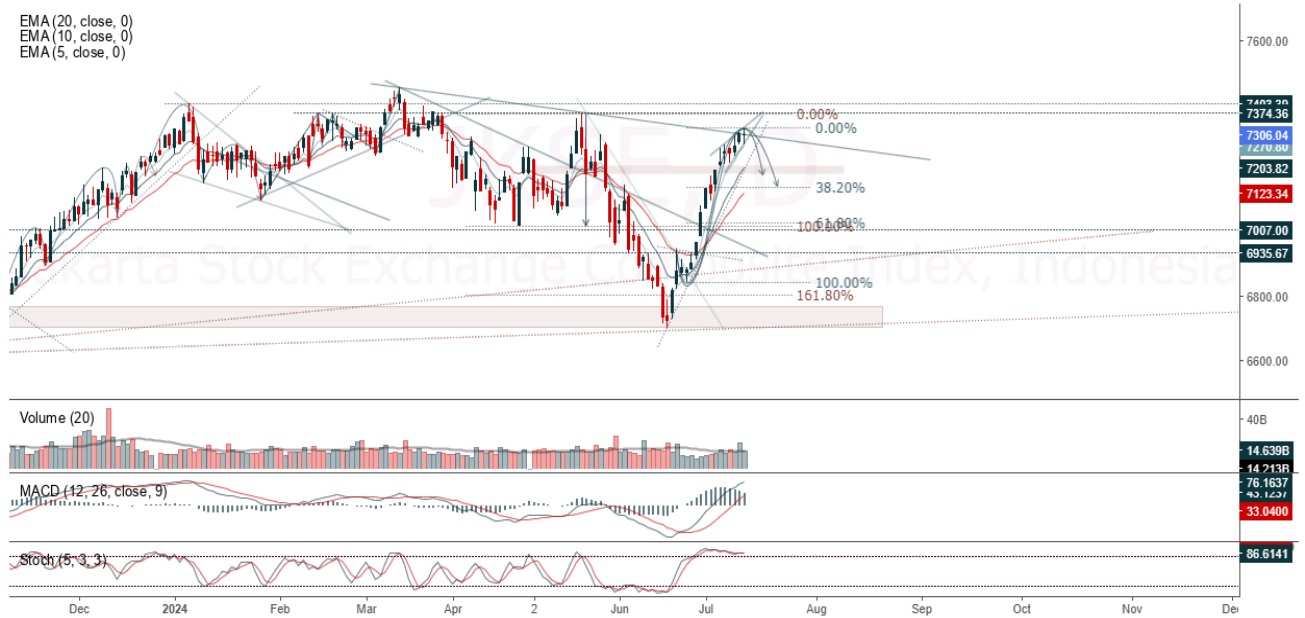


JCI Range Today 7,220 – 7,239 (Support), 7,356 – 7,374 (Resistance)

Jakarta Stock Exchange Composite Index, Indonesia, Jakarta:JKSE, D

EMA (20, close, 0)
EMA (10, close, 0)
EMA (5, close, 0)



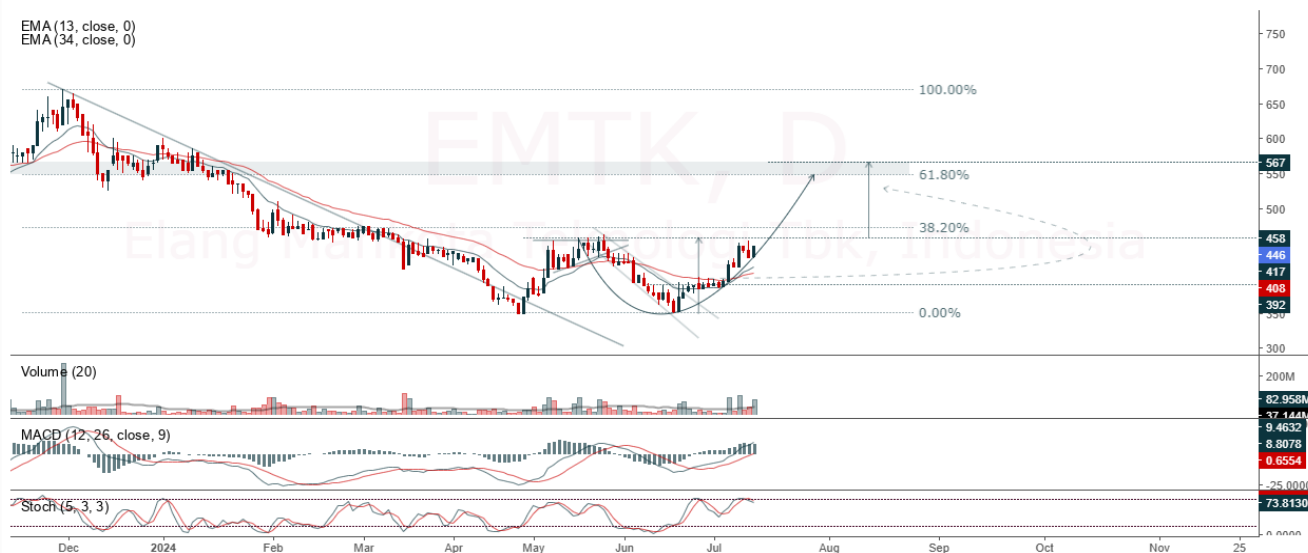
Jakarta Composite Index, Price close positive at area trendline resistance and indication rising wedge pattern version minor term (be careful). Indicator from stochastic is still bearish, MACD histogram is moving positive (line is bullish) and volume is decreasing. Bearish scenario: If it moves bearish again, JCI is expected to weaken again to the support range of 7,220 – 7,239. Bullish scenario: If JCI is able to move bullish, JCI has the opportunity to break resistance 7,356 – 7,374.

Stock Pick Today: EMTK, KLBF, MDKA, TBIG

EMTK

Elang Mahkota Teknologi Tbk, Indonesia, Jakarta:EMTK, D

EMA (13, close, 0)
EMA (34, close, 0)



(EMTK). Price closed higher and back to rally. Price has the opportunity strengthen to the nearest resistance. Stochastic is bearish, MACD histogram is moving positive (line is bullish) and volume is increasing. Confirm buy if the next candle returns bullish or buy on support if it goes down first. Be careful if you fail to stay above the support level or become a support breakdown. **(Trading Buy)**

TRADING STRATEGY:

1. Target Price: The price has a bullish opportunity to test the resistance level 454. If it breaks level 454 then the price will go to level 462. We recommend to be careful if the price fails to break through or turn around the support area.
2. Stop Loss: To minimize the risk of loss, we recommend placing a stop loss at level 434.

Entry Buy : 438 – 446
Target Price : 454 – 462
Support : 436 – 438
Cut loss : 434

KLBF

Kalbe Farma Tbk PT, Indonesia, Jakarta:KLBF, D



(KLBF). Price closed higher and breakout resistance. Price has the opportunity strengthen to the next resistance. Stochastic is neutral, MACD histogram is moving positive (line is golden cross) and volume is increasing. Confirm buy if the next candle returns bullish or buy on support if it goes down first. Be careful if you fail to stay above the support level or become a support breakdown. **(Trading Buy)**

TRADING STRATEGY:

1. **Target Price:** The price has a bullish opportunity to test the resistance level 1,595. If it breaks level 1,595 then the price will go to level 1,620. We recommend to be careful if the price fails to break through or turn around the support area.

2. **Stop Loss:** To minimize the risk of loss, we recommend placing a stop loss at level 1,525.

Entry Buy : 1,540 – 1,565
 Target Price : 1,595 – 1,620
 Support : 1,530 – 1,540
 Cut loss : 1,525

MDKA

Merdeka Copper Gold TBK PT, Indonesia, Jakarta:MDKA, D



(MDKA). Price dropped near the trendline support area or harmonic support (FR 61.80%). Price has the opportunity strengthen to the nearest resistance. Stochastic is still bearish, MACD histogram is moving positive (line is bullish) and volume is increasing. Confirm buy if the next candle returns bullish or buy on support if it goes down first. Be careful if you fail to stay above the support level or become a support breakdown. **(Trading Buy)**

TRADING STRATEGY:

1. **Target Price:** The price has a bullish opportunity to test the resistance level 2,450. If it breaks level 2,450 then the price will go to level 2,490. We recommend to be careful if the price fails to break through or turn around the support area.

2. **Stop Loss:** To minimize the risk of loss, we recommend placing a stop loss at level 2,330.

Entry Buy : 2,360 – 2,400
 Target Price : 2,450 – 2,490
 Support : 2,340 – 2,360
 Cut loss : 2,330

TBIG

Tower Bersama Infrastructure Tbk PT, Indonesia, Jakarta:TBIG, D

EMA (13, close, 0)
EMA (34, close, 0)



(TBIG). Price closed higher and breakout resistance. Price has the opportunity strengthen to the next resistance. Stochastic is bullish, MACD histogram is moving positive (line is bullish) and volume is increasing. Confirm buy if the next candle returns bullish or buy on support if it goes down first. Be careful if you fail to stay above the support level or become a support breakdown. **(Trading Buy)**

TRADING STRATEGY:

- 1. Target Price:** The price has a bullish opportunity to test the resistance level 2,030. If it breaks level 2,030 then the price will go to level 2,070. We recommend to be careful if the price fails to break through or turn around the support area.
- 2. Stop Loss:** To minimize the risk of loss, we recommend placing a stop loss at level 1,945.

Entry Buy : 1,960 – 1,990
Target Price : 2,030 – 2,070
Support : 1,950 – 1,960
Cut loss : 1,945

Forecast – Technical Analysis

Ticker	MA5	RSI Rec	MACD Trend	Recomm.	Pivot Point	Support		Resistance		Stop Loss Level
						1	2	1	2	
JCI	Negative	Overbought	Positive	Sell	7,300	7,275	7,250	7,325	7,350	7,150
ACES	Positive	Trading	Negative	Hold	825	810	800	835	850	785
ADRO	Negative	Overbought	Positive	Sell	2,880	2,860	2,840	2,900	2,920	2,795
AKRA	Positive	Oversold	Negative	Spec. Buy	1,510	1,505	1,495	1,520	1,525	1,475
AMMN	Positive	Trading	Negative	Hold	11,550	11,325	11,125	11,750	11,975	10,950
AMRT	Negative	Overbought	Positive	Sell	2,925	2,895	2,865	2,955	2,985	2,820
ANTM	Negative	Trading	Positive	Hold	1,350	1,330	1,305	1,375	1,395	1,285
ARTO	Positive	Trading	Positive	Spec. Buy	2,270	2,250	2,200	2,320	2,340	2,165
ASII	Negative	Trading	Positive	Hold	4,540	4,480	4,440	4,580	4,640	4,375
BBCA	Negative	Overbought	Positive	Sell	10,050	9,975	9,925	10,100	10,175	9,775
BBNI	Negative	Trading	Positive	Hold	4,860	4,835	4,810	4,885	4,910	4,735
BBRI	Negative	Overbought	Positive	Sell	4,880	4,835	4,800	4,915	4,960	4,725
BBTN	Negative	Trading	Positive	Hold	1,290	1,285	1,270	1,305	1,310	1,250
BMRI	Negative	Trading	Positive	Hold	6,400	6,375	6,325	6,450	6,475	6,225
BRIS	Positive	Trading	Negative	Hold	2,505	2,475	2,455	2,525	2,555	2,415
BRPT	Positive	Trading	Positive	Spec. Buy	1,110	1,095	1,075	1,130	1,145	1,060
BUKA	Negative	Trading	Positive	Hold	135	133	131	137	139	129
CPIN	Negative	Overbought	Positive	Sell	5,500	5,375	5,275	5,600	5,725	5,200
ESSA	Negative	Overbought	Positive	Sell	845	820	785	880	905	775
EXCL	Negative	Trading	Positive	Hold	2,275	2,245	2,215	2,305	2,335	2,180
GGRM	Negative	Oversold	Negative	Spec. Buy	17,300	17,200	17,100	17,400	17,500	16,825
GOTO	Negative	Oversold	Positive	Spec. Buy	50	50	49	51	51	49
HRUM	Negative	Trading	Positive	Hold	1,230	1,210	1,200	1,240	1,260	1,180
ICBP	Negative	Trading	Positive	Hold	10,300	10,275	10,200	10,375	10,400	10,050
INCO	Positive	Trading	Negative	Hold	3,885	3,785	3,685	3,985	4,085	3,625
INDF	Positive	Trading	Positive	Spec. Buy	5,975	5,925	5,875	6,025	6,075	5,775
INKP	Positive	Trading	Positive	Spec. Buy	8,725	8,600	8,500	8,825	8,950	8,350
INTP	Negative	Trading	Positive	Hold	7,400	7,250	7,175	7,475	7,625	7,075
ISAT	Negative	Overbought	Positive	Sell	11,275	10,950	10,650	11,575	11,900	10,500
ITMG	Positive	Overbought	Positive	Hold	25,675	25,475	25,300	25,850	26,050	24,925
KLBF	Negative	Trading	Negative	Sell	1,550	1,535	1,510	1,575	1,590	1,490
MAPI	Negative	Trading	Positive	Hold	1,400	1,395	1,385	1,410	1,415	1,365
MBMA	Negative	Trading	Positive	Hold	640	625	615	650	665	605
MDKA	Positive	Trading	Positive	Spec. Buy	2,420	2,375	2,330	2,465	2,510	2,295
MEDC	Positive	Trading	Positive	Spec. Buy	1,340	1,325	1,305	1,360	1,375	1,285
MTEL	Positive	Trading	Positive	Spec. Buy	670	655	645	680	695	635
PGAS	Positive	Trading	Negative	Hold	1,545	1,525	1,505	1,565	1,585	1,480
PGEO	Negative	Overbought	Positive	Sell	1,290	1,230	1,200	1,320	1,380	1,180
PTBA	Negative	Trading	Positive	Hold	2,550	2,540	2,530	2,560	2,570	2,490
SIDO	Positive	Trading	Negative	Hold	740	735	725	750	755	715
SMGR	Negative	Trading	Positive	Hold	4,035	3,920	3,865	4,090	4,205	3,805
SRTG	Positive	Trading	Positive	Spec. Buy	1,445	1,420	1,395	1,470	1,495	1,375
TLKM	Negative	Overbought	Positive	Sell	3,185	3,170	3,145	3,210	3,225	3,100
TOWR	Negative	Overbought	Positive	Sell	785	775	760	800	810	745
UNTR	Negative	Overbought	Positive	Sell	23,625	23,400	23,200	23,825	24,050	22,850
UNVR	Negative	Trading	Negative	Sell	2,940	2,890	2,850	2,980	3,030	2,805

OUR TEAM

Sukarno Alatas

Head of Equity Research

sukarno@kiwoom.co.id | 021 5010 5800

Abdul Azis Setyo Wibowo

Equity Research Analyst

azis@kiwoom.co.id | 021 5010 5800

Miftahul Khaer

Equity Research Analyst

khaer.miftahul@kiwoom.co.id | 021 5010 5800

Vicky Rosalinda

Equity Research Analyst

vicky.rosalinda@kiwoom.co.id | 021 5010 5800

Wahyu Saputra

Research Associate

wahyu.saputra@kiwoom.co.id | 021 5010 5800



OTHER DISCLOSURES

All Kiwoom's research reports made available to clients are simultaneously available on our own website <http://www.kiwoom.co.id/>. Not all research content is redistributed, e-mailed or made available to third-party aggregators. For all research reports available on a particular stock, please contact your sales representative. Any data discrepancies in this report could be the result of different calculations and/or adjustments.

DISCLAIMER This report has been prepared and issued by PT Kiwoom Sekuritas Indonesia. Information has been obtained from sources believed to be reliable but Kiwoom Securities do not warrant its completeness or accuracy. Forward-looking information or statements in this report contain information that is based on forecast of future results, estimates of amounts not yet determinable, assumptions, and therefore involve known and unknown risks and uncertainties which may cause the actual results, performance or achievements of their subject matter to be materially different from current expectations.

To the fullest extent allowed by law, PT Kiwoom Sekuritas Indonesia shall not be liable for any direct, indirect or consequential losses, loss of profits, damages, costs or expenses incurred or suffered by any person or organization arising from reliance on or use of any information contained on this report. The information that we provide should not be construed in any manner whatsoever as, personalized advice.

No mention of a particular security in this report constitutes a recommendation to buy, sell or hold that or any security, or that any particular security, portfolio of securities, transaction or investment strategy is suitable for any specific person. This report is being supplied to you solely for your information and may not be reproduced by, further distributed to or published in whole or in part by, any other person.