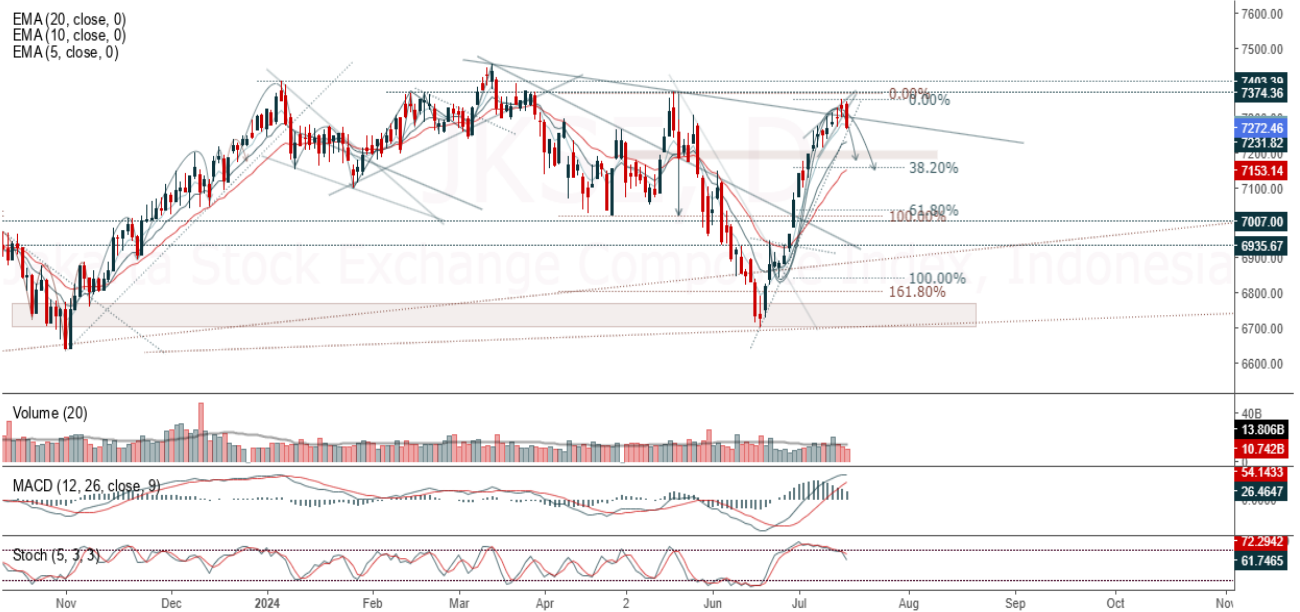


JCI Range Today 7,196 – 7,213 (Support), 7,328 – 7,346 (Resistance)

Jakarta Stock Exchange Composite Index, Indonesia, Jakarta:JKSE, D



Jakarta Composite Index, Price close negative with swing high. Indicator from stochastic is back to bearish, MACD histogram is moving positive (line is bullish) and volume is decreasing. Bearish scenario: If it moves bearish again, JCI is expected to weaken again to the support range of 7,196 – 7,213. Bullish scenario: If JCI is able to move bullish, JCI has the opportunity to break resistance 7,328 – 7,346.

Stock Pick Today: ICBP, SMDR, TPIA, TUGU

ICBP

Indofood Cbp Sukses Makmur Tbk, Indonesia, Jakarta:ICBP, D

EMA (13, close, 0)
EMA (34, close, 0)



(ICBP). Price closed higher and breakup trendline resistance. Price has the opportunity strengthen to the next resistance. Stochastic is golden cross, MACD histogram is moving positive (line is bullish) and volume is increasing. Confirm buy if the next candle returns bullish or buy on support if it goes down first. Be careful if you fail to stay above the support level or become a support breakdown. **(Trading Buy)**

TRADING STRATEGY:

1. **Target Price:** The price has a bullish opportunity to test the resistance level 10,775. If it breaks level 10,775 then the price will go to level 10,900. We recommend to be careful if the price fails to break through or turn around the support area.

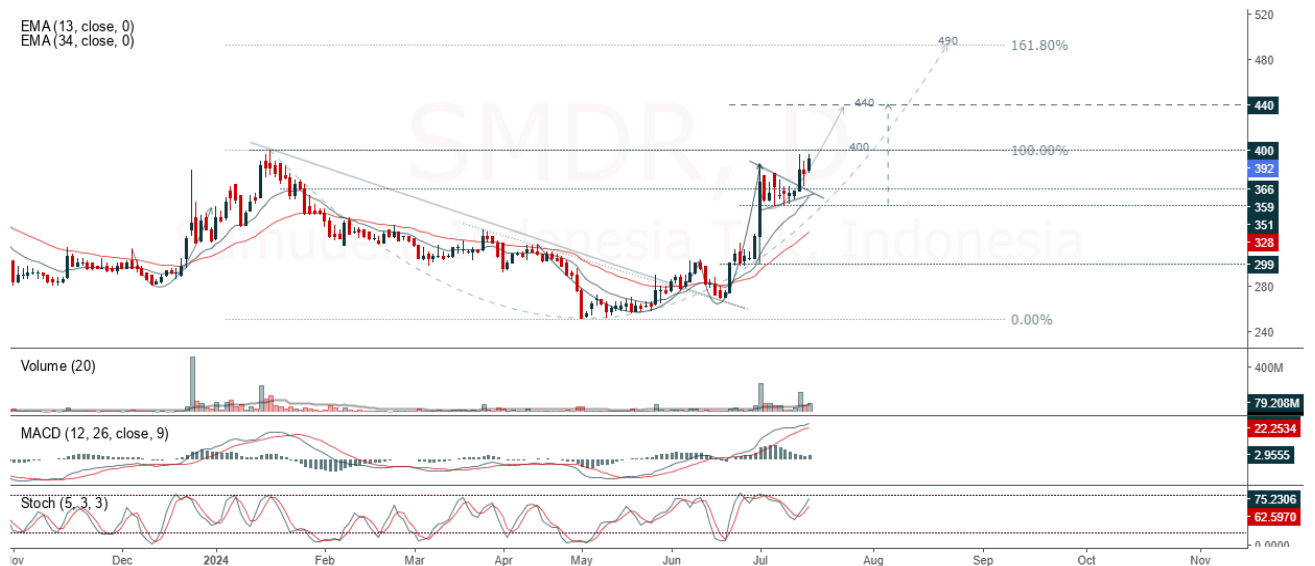
2. **Stop Loss:** To minimize the risk of loss, we recommend placing a stop loss at level 10,350.

Entry Buy : 10,425 – 10,575
Target Price : 10,775 – 10,900
Support : 10,375 – 10,425
Cut loss : 10,350

SMDR

Samudera Indonesia Tbk, Indonesia, Jakarta:SMDR, D

EMA (13, close, 0)
EMA (34, close, 0)



(SMDR). Price closed higher and back to rally. Price has the opportunity strengthen to the nearest resistance. Stochastic is still bullish, MACD histogram is moving positive (line is bullish) and volume is increasing. Confirm buy if the next candle returns bullish or buy on support if it goes down first. Be careful if you fail to stay above the support level or become a support breakdown. **(Trading Buy)**

TRADING STRATEGY:

1. **Target Price:** The price has a bullish opportunity to test the resistance level 400. If it breaks level 400 then the price will go to level 406. We recommend to be careful if the price fails to break through or turn around the support area.

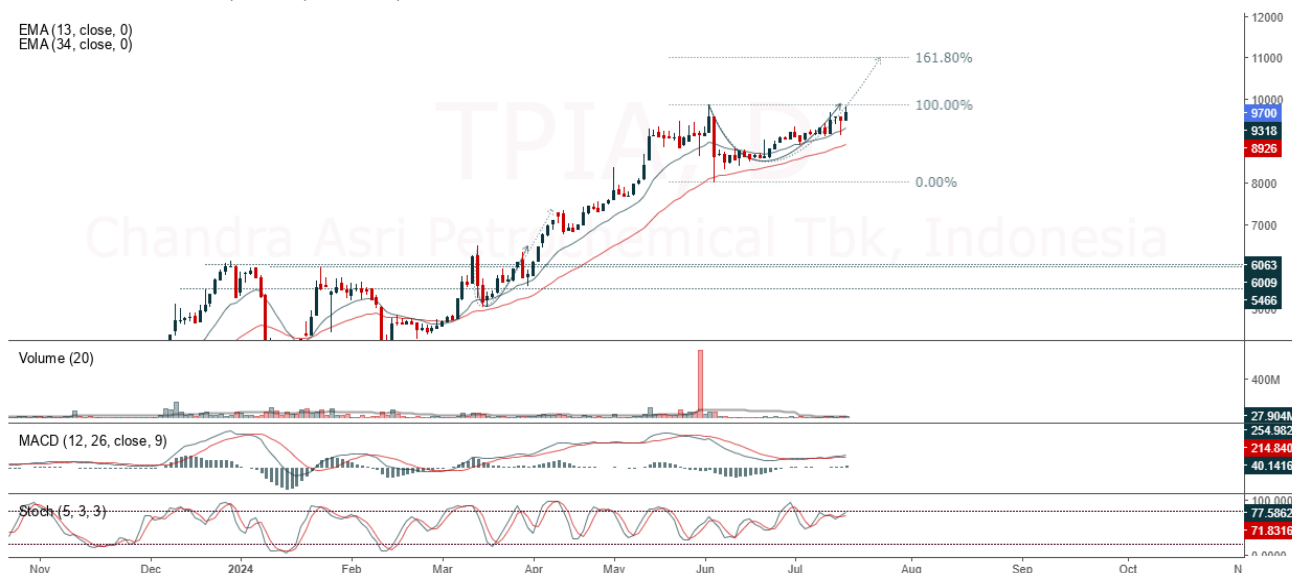
2. **Stop Loss:** To minimize the risk of loss, we recommend placing a stop loss at level 382.

Entry Buy : 386 – 392
Target Price : 400 – 406
Support : 384 – 386
Cut loss : 382

TPIA

Chandra Asri Petrochemical Tbk, Indonesia, Jakarta:TPIA, D

EMA (13, close, 0)
EMA (34, close, 0)



(TPIA). Price closed higher and back to rally. Price has the opportunity strengthen to the nearest resistance. Stochastic is bullish, MACD histogram is moving positive (line is bullish) and volume is increasing. Confirm buy if the next candle returns bullish or buy on support if it goes down first. Be careful if you fail to stay above the support level or become a support breakdown. **(Trading Buy)**

TRADING STRATEGY:

1. **Target Price:** The price has a bullish opportunity to test the resistance level 9,875. If it breaks level 9,875 then the price will go to level 10,000. We recommend to be careful if the price fails to break through or turn around the support area.

2. **Stop Loss:** To minimize the risk of loss, we recommend placing a stop loss at level 9,475.

Entry Buy : 9,600 – 9,700
Target Price : 9,875 – 10,000
Support : 9,500 – 9,600
Cut loss : 9,475

TUGU

Asuransi Tugu Pratama Indonesia Tbk PT, Indonesia, Jakarta:TUGU, D



(TUGU). Price closed higher and breakout resistance. Price has the opportunity strengthen to the next resistance. Stochastic is golden cross, MACD histogram is moving positive (line is bullish) and volume is increasing. Confirm buy if the next candle returns bullish or buy on support if it goes down first. Be careful if you fail to stay above the support level or become a support breakdown. **(Trading Buy)**

TRADING STRATEGY:

1. Target Price: The price has a bullish opportunity to test the resistance level 1,120. If it breaks level 1,120 then the price will go to level 1,140. We recommend to be careful if the price fails to break through or turn around the support area.

2. Stop Loss: To minimize the risk of loss, we recommend placing a stop loss at level 1,070.

Entry Buy : 1,080 – 1,100
 Target Price : 1,120 – 1,140
 Support : 1,075 – 1,080
 Cut loss : 1,070

Forecast – Technical Analysis

Ticker	MA5	RSI Rec	MACD Trend	Recomm.	Pivot Point	Support		Resistance		Stop Loss Level
						1	2	1	2	
JCI	Negative	Overbought	Positive	Sell	7,300	7,250	7,200	7,350	7,400	7,100
ACES	Positive	Oversold	Negative	Spec. Buy	790	770	750	810	830	740
ADRO	Positive	Trading	Positive	Spec. Buy	2,850	2,830	2,810	2,870	2,890	2,770
AKRA	Positive	Oversold	Negative	Spec. Buy	1,495	1,485	1,460	1,520	1,530	1,440
AMMN	Negative	Trading	Negative	Sell	11,675	11,425	11,175	11,925	12,175	11,025
AMRT	Negative	Overbought	Positive	Sell	2,890	2,835	2,700	3,025	3,080	2,655
ANTM	Positive	Trading	Positive	Spec. Buy	1,355	1,335	1,315	1,375	1,395	1,295
ARTO	Positive	Trading	Positive	Spec. Buy	2,290	2,255	2,220	2,325	2,360	2,185
ASII	Positive	Trading	Positive	Spec. Buy	4,505	4,460	4,415	4,550	4,595	4,350
BBCA	Negative	Overbought	Positive	Sell	10,025	10,000	9,900	10,125	10,150	9,750
BBNI	Negative	Overbought	Positive	Sell	5,025	4,990	4,940	5,075	5,125	4,865
BBRI	Negative	Overbought	Positive	Sell	4,870	4,810	4,750	4,930	4,990	4,680
BBTN	Negative	Overbought	Positive	Sell	1,360	1,355	1,340	1,375	1,380	1,320
BMRI	Negative	Trading	Positive	Hold	6,400	6,325	6,250	6,475	6,550	6,150
BRIS	Negative	Trading	Negative	Sell	2,495	2,470	2,445	2,520	2,545	2,410
BRPT	Positive	Trading	Positive	Spec. Buy	1,120	1,100	1,080	1,140	1,160	1,065
BUKA	Positive	Trading	Positive	Spec. Buy	133	130	128	135	138	126
CPIN	Negative	Overbought	Positive	Sell	5,525	5,450	5,350	5,625	5,700	5,250
ESSA	Negative	Overbought	Positive	Sell	840	815	790	865	890	780
EXCL	Negative	Trading	Positive	Hold	2,270	2,235	2,210	2,295	2,330	2,175
GGRM	Positive	Oversold	Negative	Spec. Buy	17,025	16,950	16,875	17,100	17,175	16,625
GOTO	Negative	Oversold	Positive	Spec. Buy	50	50	50	50	50	49
HRUM	Negative	Trading	Positive	Hold	1,245	1,210	1,180	1,275	1,310	1,160
ICBP	Positive	Trading	Positive	Spec. Buy	10,450	10,350	10,175	10,625	10,725	10,025
INCO	Positive	Oversold	Negative	Spec. Buy	3,725	3,670	3,625	3,770	3,825	3,570
INDF	Positive	Trading	Negative	Hold	5,975	5,950	5,900	6,025	6,050	5,800
INKP	Positive	Oversold	Negative	Spec. Buy	8,550	8,450	8,375	8,625	8,725	8,225
INTP	Positive	Trading	Positive	Spec. Buy	7,450	7,350	7,200	7,600	7,700	7,075
ISAT	Negative	Overbought	Positive	Sell	11,400	11,275	11,100	11,575	11,700	10,925
ITMG	Positive	Trading	Positive	Spec. Buy	25,525	25,375	25,225	25,675	25,825	24,850
KLBF	Positive	Trading	Positive	Spec. Buy	1,565	1,555	1,550	1,570	1,580	1,525
MAPI	Positive	Trading	Negative	Hold	1,365	1,330	1,305	1,390	1,425	1,285
MBMA	Negative	Trading	Positive	Hold	630	625	605	650	655	595
MDKA	Positive	Trading	Positive	Spec. Buy	2,360	2,320	2,280	2,400	2,440	2,245
MEDC	Positive	Trading	Positive	Spec. Buy	1,305	1,270	1,245	1,330	1,365	1,225
MTEL	Positive	Trading	Positive	Spec. Buy	675	670	655	690	695	645
PGAS	Positive	Trading	Negative	Hold	1,580	1,565	1,545	1,600	1,615	1,520
PGEO	Negative	Overbought	Positive	Sell	1,290	1,260	1,235	1,315	1,345	1,220
PTBA	Positive	Trading	Positive	Spec. Buy	2,535	2,510	2,475	2,570	2,595	2,440
SIDO	Positive	Trading	Negative	Hold	745	740	735	750	755	725
SMGR	Positive	Trading	Positive	Spec. Buy	4,095	4,015	3,955	4,155	4,235	3,895
SRTG	Positive	Trading	Positive	Spec. Buy	1,470	1,435	1,400	1,505	1,540	1,380
TLKM	Negative	Overbought	Positive	Sell	3,185	3,145	3,095	3,235	3,275	3,045
TOWR	Negative	Overbought	Positive	Sell	805	795	780	820	830	770
UNTR	Positive	Overbought	Positive	Hold	23,625	23,500	23,375	23,750	23,875	23,025
UNVR	Positive	Trading	Negative	Hold	2,930	2,905	2,870	2,965	2,990	2,825

OUR TEAM

Sukarno Alatas

Head of Equity Research

sukarno@kiwoom.co.id | 021 5010 5800

Abdul Azis Setyo Wibowo

Equity Research Analyst

azis@kiwoom.co.id | 021 5010 5800

Miftahul Khaer

Equity Research Analyst

khaer.miftahul@kiwoom.co.id | 021 5010 5800

Vicky Rosalinda

Equity Research Analyst

vicky.rosalinda@kiwoom.co.id | 021 5010 5800

Wahyu Saputra

Research Associate

wahyu.saputra@kiwoom.co.id | 021 5010 5800



OTHER DISCLOSURES

All Kiwoom's research reports made available to clients are simultaneously available on our own website <http://www.kiwoom.co.id/>. Not all research content is redistributed, e-mailed or made available to third-party aggregators. For all research reports available on a particular stock, please contact your sales representative. Any data discrepancies in this report could be the result of different calculations and/or adjustments.

DISCLAIMER This report has been prepared and issued by PT Kiwoom Sekuritas Indonesia. Information has been obtained from sources believed to be reliable but Kiwoom Securities do not warrant its completeness or accuracy. Forward-looking information or statements in this report contain information that is based on forecast of future results, estimates of amounts not yet determinable, assumptions, and therefore involve known and unknown risks and uncertainties which may cause the actual results, performance or achievements of their subject matter to be materially different from current expectations.

To the fullest extent allowed by law, PT Kiwoom Sekuritas Indonesia shall not be liable for any direct, indirect or consequential losses, loss of profits, damages, costs or expenses incurred or suffered by any person or organization arising from reliance on or use of any information contained on this report. The information that we provide should not be construed in any manner whatsoever as, personalized advice.

No mention of a particular security in this report constitutes a recommendation to buy, sell or hold that or any security, or that any particular security, portfolio of securities, transaction or investment strategy is suitable for any specific person. This report is being supplied to you solely for your information and may not be reproduced by, further distributed to or published in whole or in part by, any other person.