

JCI Range Today 7,239 – 7,265 (Support), 7,374 – 7,396 (Resistance)

Jakarta Stock Exchange Composite Index, Indonesia, Jakarta:JKSE, D

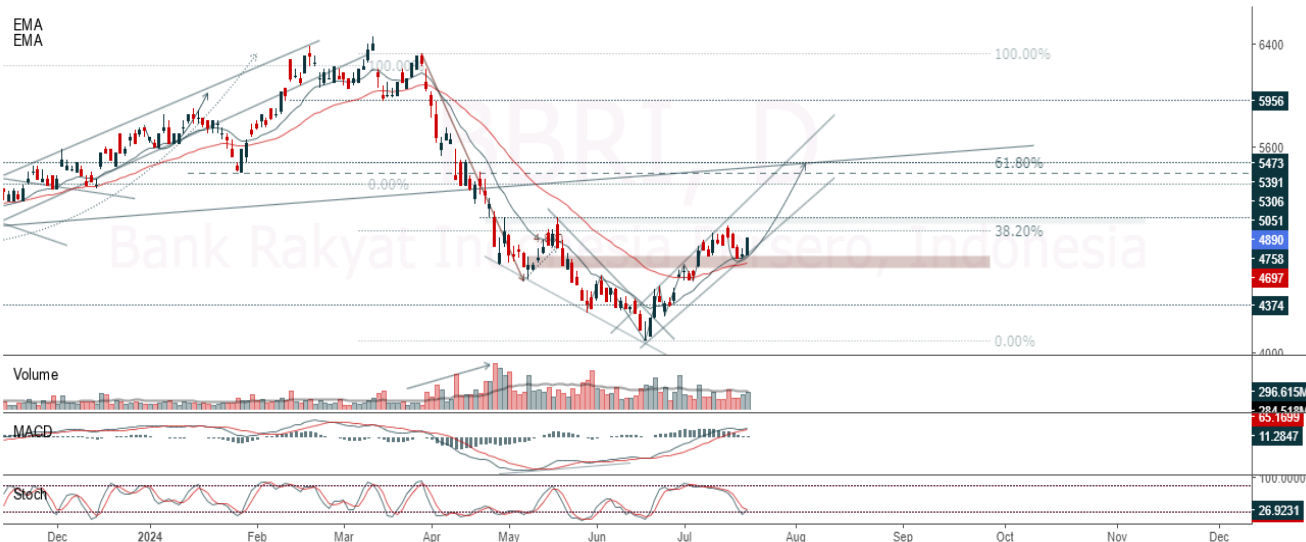


Jakarta Composite Index, JCI closed back to swing low and breakout resistance. Indicator from stochastic is golden cross, MACD histogram is moving positive (line is bullish) and volume is decreasing. Bearish scenario: If it moves bearish again, JCI is expected to weaken again to the support range of 7,239 – 7,265. Bullish scenario: If JCI is able to move bullish, JCI has the opportunity to break resistance 7,374 – 7,396.

Stock Pick Today: BBRI, MYOR, PTBA, UNTR

BBRI

Bank Rakyat Indonesia Persero, Indonesia, Jakarta:BBRI, D



(BBRI). Price closed higher and breakup dynamic resistance at EMA 5 & 10. Price has the opportunity strengthen to the nearest resistance. Stochastic is golden cross, MACD histogram is moving positive (line is bullish) and volume is increasing. Confirm buy if the next candle returns bullish or buy on support if it goes down first. Be careful if you fail to stay above the support level or become a support breakdown. **(Trading Buy)**

TRADING STRATEGY:

1. **Target Price:** The price has a bullish opportunity to test the resistance level 4,980. If it breaks level 4,980 then the price will go to level 5,050. We recommend to be careful if the price fails to break through or turn around the support area.

2. **Stop Loss:** To minimize the risk of loss, we recommend placing a stop loss at level 4,760.

Entry Buy : 4,810 – 4,890
Target Price : 4,980 – 5,050
Support : 4,770 – 4,810
Cut loss : 4,760

MYOR

Mayora Indah Tbk, Indonesia, Jakarta:MYOR, D



(MYOR). Price closed higher and breakout resistance. Price has the opportunity strengthen to the next resistance. Stochastic is golden cross potential, MACD histogram is moving positive (line is bullish) and volume is increasing. Confirm buy if the next candle returns bullish or buy on support if it goes down first. Be careful if you fail to stay above the support level or become a support breakdown. **(Trading Buy)**

TRADING STRATEGY:

1. Target Price: The price has a bullish opportunity to test the resistance level 2,650. If it breaks level 2,650 then the price will go to level 2,690. We recommend to be careful if the price fails to break through or turn around the support area.
2. Stop Loss: To minimize the risk of loss, we recommend placing a stop loss at level 2,520.

Entry Buy : 2,550 – 2,600
 Target Price : 2,650 – 2,690
 Support : 2,530 – 2,550
 Cut loss : 2,520

PTBA

Bukit Asam Tbk PT, Indonesia, Jakarta:PTBA, D



(PTBA). Price closed higher and breakout resistance. Price has the opportunity strengthen to the next resistance. Stochastic is bullish, MACD histogram is moving positive (line is bullish) and volume is increasing. Confirm buy if the next candle returns bullish or buy on support if it goes down first. Be careful if you fail to stay above the support level or become a support breakdown. **(Trading Buy)**

TRADING STRATEGY:

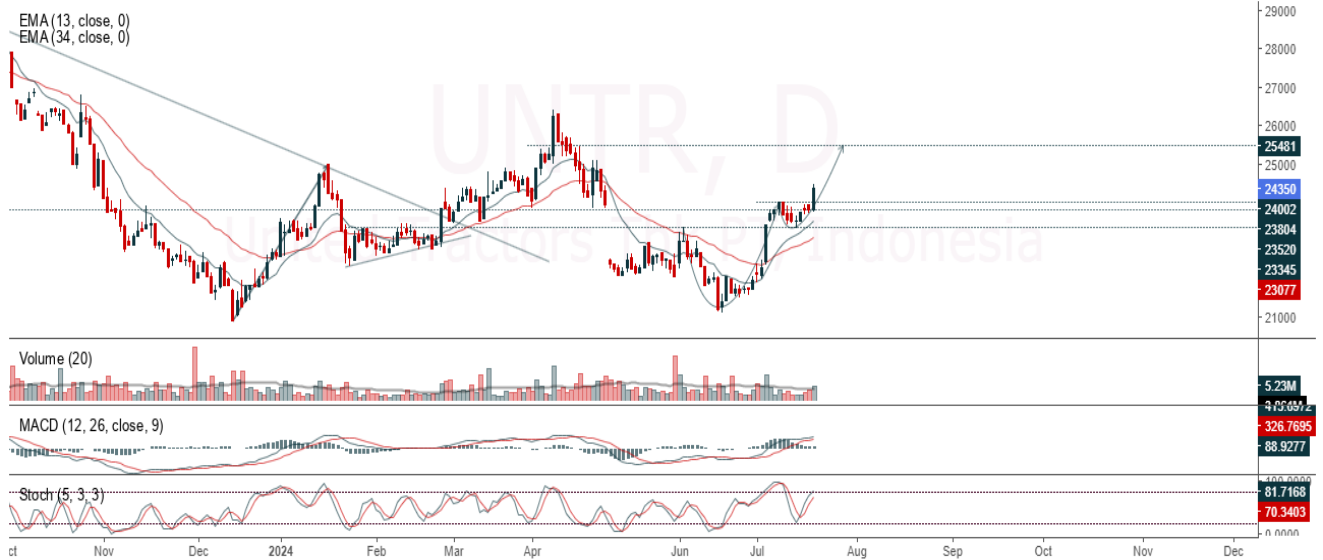
1. **Target Price:** The price has a bullish opportunity to test the resistance level 2,670. If it breaks level 2,670 then the price will go to level 2,710. We recommend to be careful if the price fails to break through or turn around the support area.

2. **Stop Loss:** To minimize the risk of loss, we recommend placing a stop loss at level 2,550.

Entry Buy : 2,570 – 2,620
 Target Price : 2,670 – 2,710
 Support : 2,560 – 2,570
 Cut loss : 2,550

UNTR

United Tractors Tbk PT, Indonesia, Jakarta:UNTR, D



(UNTR). Price closed higher and breakout resistance. Price has the opportunity strengthen to the next resistance. Stochastic is still bullish, MACD histogram is moving positive (line is bullish) and volume is increasing. Confirm buy if the next candle returns bullish or buy on support if it goes down first. Be careful if you fail to stay above the support level or become a support breakdown. **(Trading Buy)**

TRADING STRATEGY:

1. **Target Price:** The price has a bullish opportunity to test the resistance level 24,800. If it breaks level 24,800 then the price will go to level 25,200. We recommend to be careful if the price fails to break through or turn around the support area.

2. **Stop Loss:** To minimize the risk of loss, we recommend placing a stop loss at level 23,775.

Entry Buy : 24,000 – 24,350
 Target Price : 24,800 – 25,200
 Support : 23,800 – 24,000
 Cut loss : 23,775

Forecast – Technical Analysis

Ticker	MA5	RSI Rec	MACD Trend	Recomm.	Pivot Point	Support		Resistance		Stop Loss Level
						1	2	1	2	
JCI	Positive	Overbought	Positive	Hold	7,275	7,225	7,175	7,325	7,375	7,050
ACES	Positive	Trading	Negative	Hold	810	795	775	830	845	760
ADRO	Negative	Trading	Positive	Hold	2,960	2,875	2,790	3,045	3,130	2,745
AKRA	Negative	Oversold	Negative	Spec. Buy	1,515	1,505	1,495	1,525	1,535	1,475
AMMN	Positive	Trading	Negative	Hold	11,125	11,000	10,750	11,375	11,500	10,600
AMRT	Positive	Trading	Positive	Spec. Buy	2,865	2,815	2,785	2,895	2,945	2,740
ANTM	Negative	Trading	Positive	Hold	1,390	1,370	1,360	1,400	1,420	1,335
ARTO	Negative	Trading	Positive	Hold	2,400	2,325	2,290	2,435	2,510	2,255
ASII	Positive	Trading	Negative	Hold	4,505	4,465	4,425	4,545	4,585	4,355
BBCA	Positive	Trading	Negative	Hold	9,950	9,800	9,650	10,100	10,250	9,500
BBNI	Negative	Overbought	Positive	Sell	5,050	4,965	4,910	5,100	5,175	4,835
BBRI	Positive	Trading	Positive	Spec. Buy	4,825	4,755	4,685	4,895	4,965	4,610
BBTN	Negative	Overbought	Positive	Sell	1,400	1,385	1,365	1,420	1,435	1,345
BMRI	Negative	Trading	Positive	Hold	6,550	6,500	6,450	6,600	6,650	6,350
BRIS	Positive	Trading	Negative	Hold	2,485	2,460	2,435	2,510	2,535	2,400
BRPT	Positive	Trading	Negative	Hold	1,075	1,040	1,020	1,095	1,130	1,000
BUKA	Positive	Trading	Negative	Hold	130	127	125	132	135	123
CPIN	Positive	Overbought	Positive	Hold	5,475	5,400	5,325	5,550	5,625	5,250
ESSA	Negative	Overbought	Positive	Sell	860	845	835	870	885	820
EXCL	Positive	Trading	Positive	Spec. Buy	2,235	2,220	2,195	2,260	2,275	2,160
GGRM	Positive	Oversold	Negative	Spec. Buy	16,950	16,850	16,775	17,025	17,125	16,525
GOTO	Negative	Oversold	Positive	Spec. Buy	51	50	49	52	53	48
HRUM	Negative	Trading	Positive	Hold	1,240	1,220	1,210	1,250	1,270	1,190
ICBP	Negative	Overbought	Positive	Sell	10,750	10,675	10,600	10,825	10,900	10,425
INCO	Positive	Trading	Negative	Hold	3,840	3,815	3,780	3,875	3,900	3,720
INDF	Negative	Trading	Negative	Sell	6,050	6,025	5,975	6,100	6,125	5,875
INKP	Positive	Trading	Negative	Hold	8,500	8,425	8,350	8,575	8,650	8,225
INTP	Positive	Trading	Negative	Hold	7,350	7,325	7,275	7,400	7,425	7,175
ISAT	Negative	Overbought	Positive	Sell	11,750	11,525	11,375	11,900	12,125	11,200
ITMG	Negative	Overbought	Positive	Sell	25,950	25,675	25,325	26,300	26,575	24,925
KLBF	Negative	Trading	Positive	Hold	1,565	1,545	1,530	1,580	1,600	1,505
MAPI	Positive	Trading	Positive	Spec. Buy	1,405	1,390	1,375	1,420	1,435	1,350
MBMA	Negative	Trading	Positive	Hold	650	635	625	660	675	615
MDKA	Positive	Trading	Positive	Spec. Buy	2,415	2,400	2,375	2,440	2,455	2,340
MEDC	Positive	Trading	Negative	Hold	1,315	1,295	1,285	1,325	1,345	1,265
MTEL	Negative	Overbought	Positive	Sell	695	690	680	705	710	670
PGAS	Negative	Overbought	Positive	Sell	1,620	1,610	1,605	1,625	1,635	1,580
PGEO	Positive	Trading	Positive	Spec. Buy	1,275	1,260	1,240	1,295	1,310	1,220
PTBA	Positive	Trading	Positive	Spec. Buy	2,580	2,525	2,470	2,635	2,690	2,430
SIDO	Positive	Trading	Negative	Hold	735	725	715	745	755	705
SMGR	Negative	Trading	Positive	Hold	4,095	4,030	4,005	4,120	4,185	3,945
SRTG	Negative	Trading	Positive	Hold	1,500	1,480	1,470	1,510	1,530	1,445
TLKM	Negative	Overbought	Positive	Sell	3,235	3,190	3,145	3,280	3,325	3,100
TOWR	Negative	Overbought	Positive	Sell	795	790	775	810	815	760
UNTR	Negative	Overbought	Positive	Sell	24,100	23,725	23,400	24,425	24,800	23,025
UNVR	Positive	Trading	Negative	Hold	2,835	2,790	2,755	2,870	2,915	2,715

OUR TEAM

Sukarno Alatas

Head of Equity Research

sukarno@kiwoom.co.id | 021 5010 5800

Abdul Azis Setyo Wibowo

Equity Research Analyst

azis@kiwoom.co.id | 021 5010 5800

Miftahul Khaer

Equity Research Analyst

khaer.miftahul@kiwoom.co.id | 021 5010 5800

Vicky Rosalinda

Equity Research Analyst

vicky.rosalinda@kiwoom.co.id | 021 5010 5800

Wahyu Saputra

Research Associate

wahyu.saputra@kiwoom.co.id | 021 5010 5800



OTHER DISCLOSURES

All Kiwoom's research reports made available to clients are simultaneously available on our own website <http://www.kiwoom.co.id/>. Not all research content is redistributed, e-mailed or made available to third-party aggregators. For all research reports available on a particular stock, please contact your sales representative. Any data discrepancies in this report could be the result of different calculations and/or adjustments.

DISCLAIMER This report has been prepared and issued by PT Kiwoom Sekuritas Indonesia. Information has been obtained from sources believed to be reliable but Kiwoom Securities do not warrant its completeness or accuracy. Forward-looking information or statements in this report contain information that is based on forecast of future results, estimates of amounts not yet determinable, assumptions, and therefore involve known and unknown risks and uncertainties which may cause the actual results, performance or achievements of their subject matter to be materially different from current expectations.

To the fullest extent allowed by law, PT Kiwoom Sekuritas Indonesia shall not be liable for any direct, indirect or consequential losses, loss of profits, damages, costs or expenses incurred or suffered by any person or organization arising from reliance on or use of any information contained on this report. The information that we provide should not be construed in any manner whatsoever as, personalized advice.

No mention of a particular security in this report constitutes a recommendation to buy, sell or hold that or any security, or that any particular security, portfolio of securities, transaction or investment strategy is suitable for any specific person. This report is being supplied to you solely for your information and may not be reproduced by, further distributed to or published in whole or in part by, any other person.