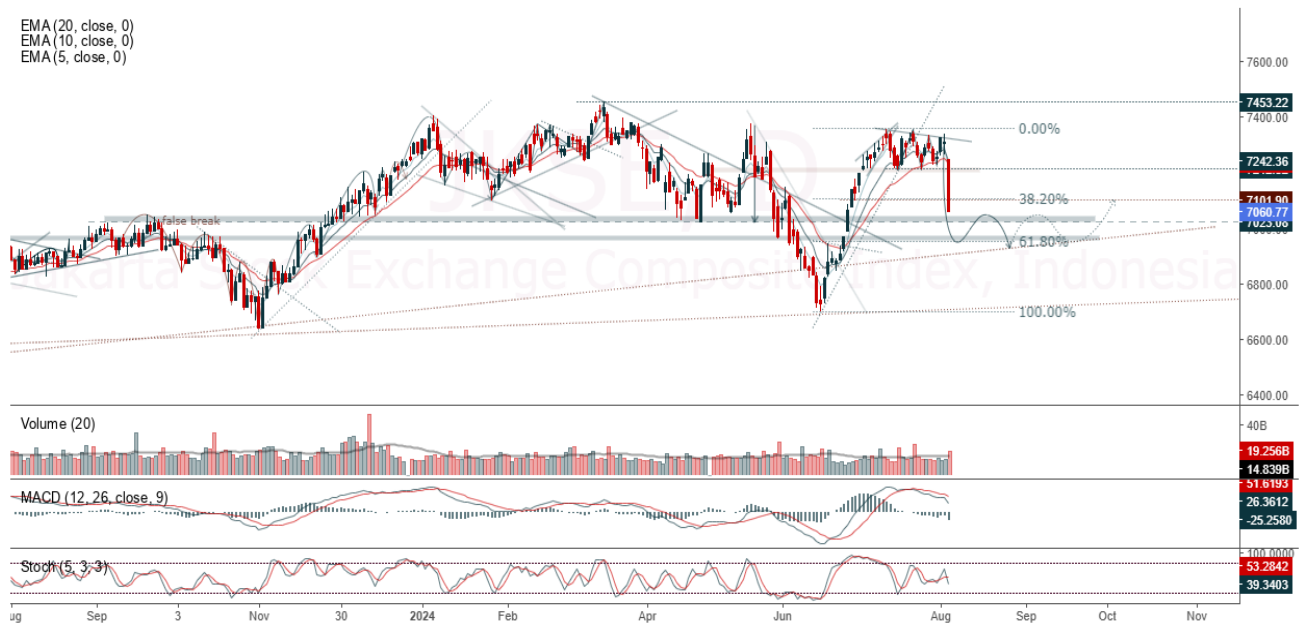


**JCI Range Today 6,950 – 6,968 (Support), 7,125 – 7,139 (Resistance)**

Jakarta Stock Exchange Composite Index, Indonesia, Jakarta:JKSE, D

EMA (20, close, 0)  
EMA (10, close, 0)  
EMA (5, close, 0)



**Jakarta Composite Index**, Price closed negative and break sideways support area. Indicator from stochastic is death cross, MACD histogram is moving negative (line is bearish) and volume is increasing. Bearish scenario: If it moves bearish again, JCI is expected to weaken again to the support range of 6,950 – 6,968. Bullish scenario: If JCI is able to move bullish, JCI has the opportunity to break resistance 7,125 – 7,139.

**Stock Pick Today: INDF, MIKA, MTEL, MYOR**

## INDF

Indofood Sukses Makmur Tbk PT, Indonesia, Jakarta:INDF, D

EMA (13, close, 0)  
EMA (34, close, 0)



**(INDF).** Price closed negative with bearish candle. Price has the opportunity strengthen to the nearest resistance. Stochastic is bearish, MACD histogram is moving negative direction (line is death cross potential) and volume is increasing. Confirm buy if the next candle returns bullish or buy on support if it goes down first. Be careful if you fail to stay above the support level or become a support breakdown.

**(Trading Buy)**

### TRADING STRATEGY:

1. **Target Price:** The price has a bullish opportunity to test the resistance level 6,175. If it breaks level 6,175 then the price will go to level 6,275. We recommend to be careful if the price fails to break through or turn around the support area.

2. **Stop Loss:** To minimize the risk of loss, we recommend placing a stop loss at level 5,875.

Entry Buy : 5,950 – 6,050

Target Price : 6,175 – 6,275

Support : 5,900 – 5,950

Cut loss : 5,875

**MIKA**

Mitra Keluarga Karyasehat Tbk PT, Indonesia, Jakarta: MIKA, D

EMA (13, close, 0)  
EMA (34, close, 0)



**(MIKA).** Price closed higher with bullish candle. Price has the opportunity strengthen to the nearest resistance. Stochastic is still bearish, MACD histogram is moving negative (line is bearish) and volume is decreased slightly. Confirm buy if the next candle returns bullish or buy on support if it goes down first. Be careful if you fail to stay above the support level or become a support breakdown. **(Trading Buy)**

**TRADING STRATEGY:**

1. Target Price: The price has a bullish opportunity to test the resistance level 3,030. If it breaks level 3,030 then the price will go to level 3,080. We recommend to be careful if the price fails to break through or turn around the support area.
2. Stop Loss: To minimize the risk of loss, we recommend placing a stop loss at level 2,890.

Entry Buy : 2,920 – 2,970  
Target Price : 3,030 – 3,080  
Support : 2,900 – 2,920  
Cut loss : 2,890

## MTEL

Dayamitra Telekomunikasi PT, Indonesia, Jakarta:MTEL, D

EMA (13, close, 0)  
EMA (34, close, 0)



**(MTEL).** Price closed negative with dragonfly doji candle. Price has the opportunity strengthen to the nearest resistance. Stochastic is death cross, MACD histogram is moving negative (line is bearish) and volume is increasing. Confirm buy if the next candle returns bullish or buy on support if it goes down first. Be careful if you fail to stay above the support level or become a support breakdown. **(Trading Buy)**

### TRADING STRATEGY:

1. **Target Price:** The price has a bullish opportunity to test the resistance level 690. If it breaks level 690 then the price will go to level 700. We recommend to be careful if the price fails to break through or turn around the support area.

2. **Stop Loss:** To minimize the risk of loss, we recommend placing a stop loss at level 655.

Entry Buy : 665 – 675  
Target Price : 690 – 700  
Support : 660 – 665  
Cut loss : 655

**MYOR**

Mayora Indah Tbk, Indonesia, Jakarta:MYOR, D

EMA  
EMA



**(MYOR).** Price closed with dragonfly doji candle. Price has the opportunity strengthen to the nearest resistance. Stochastic is still bearish, MACD histogram is moving negative (line is bearish) and volume is increasing. Confirm buy if the next candle returns bullish or buy on support if it goes down first. Be careful if you fail to stay above the support level or become a support breakdown. **(Trading Buy)**

**TRADING STRATEGY:**

1. Target Price: The price has a bullish opportunity to test the resistance level 2,520. If it breaks level 2,520 then the price will go to level 2,560. We recommend to be careful if the price fails to break through or turn around the support area.

2. Stop Loss: To minimize the risk of loss, we recommend placing a stop loss at level 2,400.

Entry Buy : 2,430 – 2,470  
 Target Price : 2,520 – 2,560  
 Support : 2,410 – 2,430  
 Cut loss : 2,400

## Forecast – Technical Analysis

Ticker	MA5	RSI Rec	MACD Trend	Recomm.	Pivot Point	Support 1	Support 2	Resistance 1	Resistance 2	Stop Loss Level
JCI	Positive	Oversold	Negative	Spec. Buy	7,150	7,025	6,875	7,275	7,400	6,775
ACES	Positive	Oversold	Negative	Spec. Buy	740	710	685	765	795	670
ADRO	Negative	Overbought	Positive	Sell	3,175	3,080	2,975	3,280	3,375	2,930
AKRA	Positive	Trading	Positive	Spec. Buy	1,440	1,395	1,345	1,490	1,535	1,325
AMMN	Positive	Trading	Positive	Spec. Buy	11,650	11,425	11,000	12,075	12,300	10,825
AMRT	Positive	Oversold	Negative	Spec. Buy	2,705	2,670	2,635	2,740	2,775	2,595
ANTM	Negative	Trading	Positive	Hold	1,305	1,275	1,240	1,340	1,370	1,220
ARTO	Negative	Overbought	Positive	Sell	2,710	2,600	2,510	2,800	2,910	2,470
ASII	Negative	Trading	Positive	Hold	4,595	4,535	4,465	4,665	4,725	4,395
BBCA	Positive	Trading	Negative	Hold	9,975	9,800	9,700	10,075	10,250	9,550
BBNI	Positive	Overbought	Negative	Sell	4,980	4,910	4,810	5,075	5,150	4,735
BBRI	Positive	Trading	Negative	Hold	4,595	4,515	4,435	4,675	4,755	4,365
BBTN	Positive	Trading	Negative	Hold	1,275	1,240	1,200	1,315	1,350	1,180
BMRI	Negative	Overbought	Positive	Sell	6,625	6,525	6,400	6,750	6,850	6,300
BRIS	Negative	Trading	Positive	Hold	2,445	2,385	2,305	2,525	2,585	2,270
BRPT	Positive	Trading	Positive	Spec. Buy	1,035	1,010	970	1,075	1,100	955
BUKA	Positive	Oversold	Negative	Spec. Buy	113	108	102	119	124	100
CPIN	Negative	Trading	Negative	Sell	5,175	5,100	5,025	5,250	5,325	4,950
ESSA	Positive	Trading	Negative	Hold	765	740	690	815	840	680
EXCL	Positive	Trading	Negative	Hold	2,120	2,070	2,030	2,160	2,210	2,000
GGRM	Positive	Oversold	Negative	Spec. Buy	15,250	15,000	14,725	15,525	15,775	14,500
GOTO	Positive	Trading	Positive	Spec. Buy	51	51	49	53	53	49
HRUM	Positive	Trading	Negative	Hold	1,150	1,120	1,085	1,185	1,215	1,065
ICBP	Negative	Overbought	Positive	Sell	10,975	10,650	10,375	11,250	11,575	10,200
INCO	Positive	Trading	Positive	Spec. Buy	3,670	3,605	3,550	3,725	3,790	3,495
INDF	Negative	Trading	Positive	Hold	6,050	6,000	5,900	6,150	6,200	5,800
INKP	Negative	Trading	Negative	Sell	8,000	7,850	7,625	8,225	8,375	7,525
INTP	Negative	Trading	Negative	Sell	7,150	7,050	6,825	7,375	7,475	6,725
ISAT	Positive	Oversold	Negative	Spec. Buy	10,250	10,025	9,750	10,525	10,750	9,600
ITMG	Negative	Overbought	Positive	Sell	26,200	25,525	24,700	27,025	27,700	24,325
JSMR	Positive	Trading	Negative	Hold	5,275	5,200	5,075	5,400	5,475	5,000
KLBF	Negative	Overbought	Positive	Sell	1,620	1,610	1,585	1,645	1,655	1,560
MAPI	Negative	Trading	Positive	Hold	1,425	1,410	1,365	1,470	1,485	1,345
MBMA	Positive	Trading	Negative	Hold	560	530	483	605	635	475
MDKA	Positive	Trading	Positive	Spec. Buy	2,260	2,175	2,080	2,355	2,440	2,045
MEDC	Positive	Trading	Positive	Spec. Buy	1,270	1,220	1,155	1,335	1,385	1,135
MTEL	Negative	Trading	Negative	Sell	675	665	655	685	695	645
PGAS	Positive	Trading	Negative	Hold	1,550	1,520	1,470	1,600	1,630	1,450
PGEO	Positive	Trading	Negative	Hold	1,225	1,205	1,170	1,260	1,280	1,155
PTBA	Positive	Overbought	Positive	Hold	2,625	2,535	2,425	2,735	2,825	2,385
SIDO	Negative	Trading	Positive	Hold	710	695	670	735	750	660
SMGR	Positive	Trading	Negative	Hold	3,815	3,765	3,705	3,875	3,925	3,645
TLKM	Positive	Oversold	Negative	Spec. Buy	2,800	2,770	2,730	2,840	2,870	2,690
TOWR	Negative	Overbought	Positive	Sell	805	790	755	840	855	745
UNTR	Negative	Overbought	Positive	Sell	24,800	24,300	23,700	25,400	25,900	23,325
UNVR	Positive	Oversold	Negative	Spec. Buy	2,415	2,380	2,335	2,460	2,495	2,300

## OUR TEAM

**Sukarno Alatas**

Head of Equity Research

[sukarno@kiwoom.co.id](mailto:sukarno@kiwoom.co.id) | 021 5010 5800**Abdul Azis Setyo Wibowo**

Equity Research Analyst

[azis@kiwoom.co.id](mailto:azis@kiwoom.co.id) | 021 5010 5800**Miftahul Khaer**

Equity Research Analyst

[khaer.miftahul@kiwoom.co.id](mailto:khaer.miftahul@kiwoom.co.id) | 021 5010 5800**Vicky Rosalinda**

Equity Research Analyst

[vicky.rosalinda@kiwoom.co.id](mailto:vicky.rosalinda@kiwoom.co.id) | 021 5010 5800**Wahyu Saputra**

Research Associate

[wahyu.saputra@kiwoom.co.id](mailto:wahyu.saputra@kiwoom.co.id) | 021 5010 5800**OTHER DISCLOSURES**

All Kiwoom's research reports made available to clients are simultaneously available on our own website <http://www.kiwoom.co.id/>. Not all research content is redistributed, e-mailed or made available to third-party aggregators. For all research reports available on a particular stock, please contact your sales representative. Any data discrepancies in this report could be the result of different calculations and/or adjustments.

**DISCLAIMER** This report has been prepared and issued by PT Kiwoom Sekuritas Indonesia. Information has been obtained from sources believed to be reliable but Kiwoom Securities do not warrant its completeness or accuracy. Forward-looking information or statements in this report contain information that is based on forecast of future results, estimates of amounts not yet determinable, assumptions, and therefore involve known and unknown risks and uncertainties which may cause the actual results, performance or achievements of their subject matter to be materially different from current expectations.

To the fullest extent allowed by law, PT Kiwoom Sekuritas Indonesia shall not be liable for any direct, indirect or consequential losses, loss of profits, damages, costs or expenses incurred or suffered by any person or organization arising from reliance on or use of any information contained on this report. The information that we provide should not be construed in any manner whatsoever as, personalized advice.

No mention of a particular security in this report constitutes a recommendation to buy, sell or hold that or any security, or that any particular security, portfolio of securities, transaction or investment strategy is suitable for any specific person. This report is being supplied to you solely for your information and may not be reproduced by, further distributed to or published in whole or in part by, any other person.