

JCI Range Today 7,466 – 7,488 (Support), 7,594 – 7,616 (Resistance)

Jakarta Stock Exchange Composite Index, Indonesia, Jakarta:JKSE, D



Jakarta Composite Index closed positive with bullish candle. Indicator from stochastic is still bearish, MACD histogram is moving positive (line is bullish) and volume is decreasing. Bearish scenario: If it moves bearish again, JCI is expected to weaken again to the support range of 7,466 – 7,488. Bullish scenario: If JCI is able to move bullish, JCI has the opportunity to break resistance 7,594 – 7,616.

Stock Pick Today: ADRO, BFIN, GJTL, PTPP

ADRO

Adaro Energy Tbk, Indonesia, Jakarta:ADRO, D

EMA (13, close, 0)
EMA (34, close, 0)



(ADRO). Price closed higher and breakout sideways area. Price has the opportunity strengthen to the nearest resistance. Stochastic is golden cross, MACD histogram is moving positive (line is golden cross) and volume is increasing. Confirm buy if the next candle returns bullish or buy on support if it goes down first. Be careful if you fail to stay above the support level or become a support breakdown.
(Trading Buy)

TRADING STRATEGY:

1. **Target Price:** The price has a bullish opportunity to test the resistance level 3,540. If it breaks level 3,540 then the price will go to level 3,590. We recommend to be careful if the price fails to break through or turn around the support area.

2. **Stop Loss:** To minimize the risk of loss, we recommend placing a stop loss at level 3,370.

Entry Buy : 3,410 – 3,470
Target Price : 3,540 – 3,590
Support : 3,380 – 3,410
Cut loss : 3,370

BFIN

BFI Finance Indonesia Tbk, Indonesia, Jakarta: BFIN, D

EMA (13, close, 0)
EMA (34, close, 0)



(BFIN). Price closed higher and breakup dynamic resistance at EMA 5. Price has the opportunity strengthen to the nearest resistance. Stochastic is golden cross potential, MACD histogram is moving positive (line is bullish) and volume is increasing. Confirm buy if the next candle returns bullish or buy on support if it goes down first. Be careful if you fail to stay above the support level or become a support breakdown. **(Trading Buy)**

TRADING STRATEGY:

1. **Target Price:** The price has a bullish opportunity to test the resistance level 1,040. If it breaks level 1,040 then the price will go to level 1,060. We recommend to be careful if the price fails to break through or turn around the support area.

2. **Stop Loss:** To minimize the risk of loss, we recommend placing a stop loss at level 990.

Entry Buy : 1,000 – 1,020
Target Price : 1,040 – 1,060
Support : 995 – 1,000
Cut loss : 990

GJTL

Gajah Tunggal Tbk, Indonesia, Jakarta:GJTL, D



(GJTL). Price closed higher and breakout resistance. Price has the opportunity strengthen to the next resistance. Stochastic is golden cross potential, MACD histogram is moving positive (line is bullish) and volume is increasing. Confirm buy if the next candle returns bullish or buy on support if it goes down first. Be careful if you fail to stay above the support level or become a support breakdown. **(Trading Buy)**

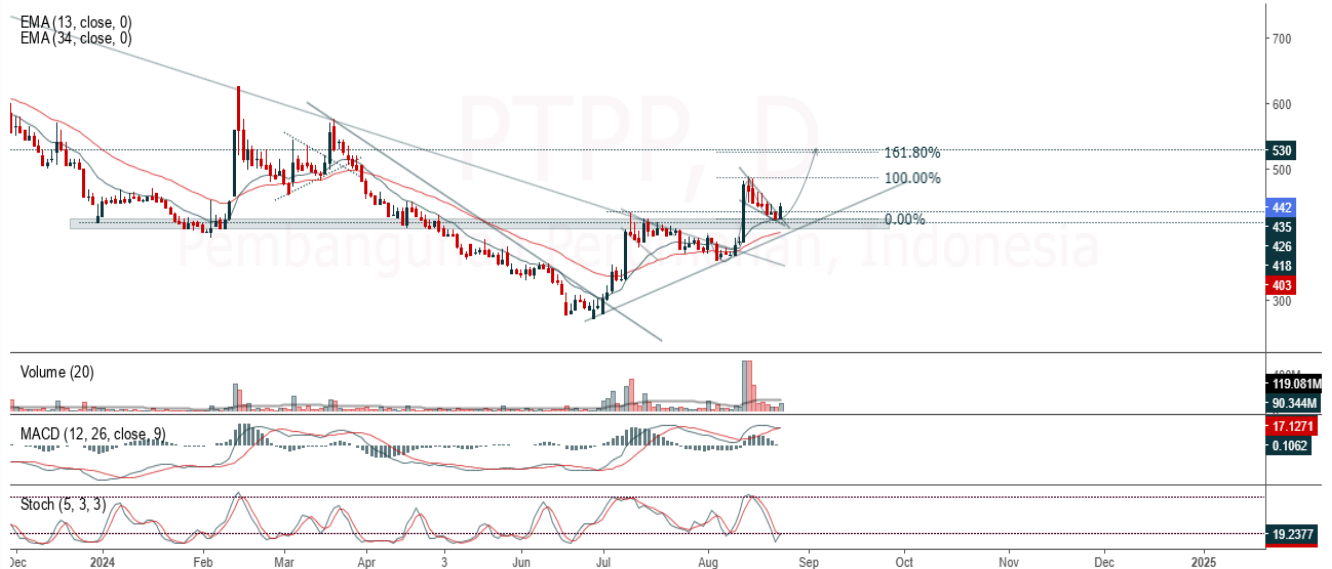
TRADING STRATEGY:

1. **Target Price:** The price has a bullish opportunity to test the resistance level 1,325. If it breaks level 1,325 then the price will go to level 1,350. We recommend to be careful if the price fails to break through or turn around the support area.
2. **Stop Loss:** To minimize the risk of loss, we recommend placing a stop loss at level 1,265.

Entry Buy : 1,275 – 1,300
Target Price : 1,325 – 1,350
Support : 1,270 – 1,275
Cut loss : 1,265

PTPP

Pembangunan Perumahan, Indonesia, Jakarta:PTPP, D



(PTPP). Price closed higher and breakout resistance. Price has the opportunity strengthen to the next resistance. Stochastic is golden cross, MACD histogram is moving positive (line is bullish) and volume is increasing. Confirm buy if the next candle returns bullish or buy on support if it goes down first. Be careful if you fail to stay above the support level or become a support breakdown. **(Trading Buy)**

TRADING STRATEGY:

1. **Target Price:** The price has a bullish opportunity to test the resistance level 450. If it breaks level 450 then the price will go to level 458. We recommend to be careful if the price fails to break through or turn around the support area.

2. **Stop Loss:** To minimize the risk of loss, we recommend placing a stop loss at level 430.

Entry Buy : 434 – 442
 Target Price : 450 – 458
 Support : 432 – 434
 Cut loss : 430

Forecast – Technical Analysis

Ticker	MA5	RSI Rec	MACD Trend	Recomm.	Pivot Point	Support		Resistance		Stop Loss Level
						1	2	1	2	
JCI	Negative	Overbought	Positive	Sell	7,525	7,500	7,475	7,550	7,600	7,350
ACES	Positive	Oversold	Positive	Buy	725	720	715	730	735	705
ADRO	Negative	Overbought	Negative	Strong Sell	3,425	3,365	3,315	3,475	3,535	3,265
AKRA	Positive	Trading	Positive	Spec. Buy	1,460	1,440	1,420	1,480	1,500	1,400
AMMN	Negative	Trading	Negative	Sell	10,675	10,550	10,325	10,900	11,025	10,175
AMRT	Negative	Trading	Positive	Hold	2,880	2,845	2,820	2,905	2,940	2,775
ANTM	Negative	Overbought	Positive	Sell	1,450	1,440	1,430	1,460	1,470	1,410
ARTO	Negative	Overbought	Positive	Sell	2,900	2,840	2,810	2,930	2,990	2,770
ASII	Negative	Overbought	Positive	Sell	5,100	5,025	4,970	5,150	5,225	4,895
BBCA	Negative	Trading	Positive	Hold	10,325	10,300	10,250	10,375	10,400	10,100
BBNI	Negative	Trading	Positive	Hold	5,400	5,275	5,200	5,475	5,600	5,100
BBRI	Negative	Overbought	Positive	Sell	5,150	5,125	5,075	5,200	5,225	5,000
BBTN	Negative	Trading	Positive	Hold	1,350	1,325	1,300	1,375	1,400	1,280
BMRI	Negative	Overbought	Positive	Sell	7,025	6,975	6,925	7,075	7,125	6,825
BRIS	Negative	Trading	Positive	Hold	2,675	2,615	2,565	2,725	2,785	2,525
BRPT	Negative	Trading	Positive	Hold	1,110	1,105	1,095	1,120	1,125	1,080
BUKA	Positive	Trading	Positive	Spec. Buy	118	116	114	120	122	113
CPIN	Positive	Trading	Negative	Hold	5,050	5,000	4,950	5,100	5,150	4,875
ESSA	Positive	Trading	Negative	Hold	775	760	745	790	805	735
EXCL	Negative	Trading	Positive	Hold	2,235	2,210	2,185	2,260	2,285	2,150
GGRM	Negative	Trading	Positive	Hold	16,300	16,125	16,025	16,400	16,575	15,775
GOTO	Positive	Trading	Positive	Spec. Buy	52	51	50	53	54	49
HRUM	Positive	Trading	Positive	Spec. Buy	1,315	1,295	1,270	1,340	1,360	1,250
ICBP	Negative	Overbought	Positive	Sell	11,425	11,350	11,275	11,500	11,575	11,100
INCO	Positive	Trading	Positive	Spec. Buy	3,780	3,750	3,720	3,810	3,840	3,665
INDF	Negative	Overbought	Positive	Sell	6,675	6,600	6,525	6,750	6,825	6,425
INKP	Negative	Trading	Positive	Hold	8,600	8,475	8,375	8,700	8,825	8,225
INTP	Negative	Trading	Positive	Hold	7,175	7,150	7,100	7,225	7,250	7,000
ISAT	Positive	Trading	Negative	Hold	10,600	10,525	10,450	10,675	10,750	10,300
ITMG	Negative	Trading	Positive	Hold	26,775	26,475	26,325	26,925	27,225	25,925
JSMR	Negative	Trading	Negative	Sell	5,450	5,400	5,350	5,500	5,550	5,275
KLBF	Negative	Overbought	Positive	Sell	1,730	1,715	1,685	1,760	1,775	1,660
MAPI	Negative	Overbought	Positive	Sell	1,515	1,505	1,485	1,535	1,545	1,465
MBMA	Positive	Oversold	Negative	Spec. Buy	545	535	530	550	560	520
MDKA	Negative	Trading	Positive	Hold	2,335	2,295	2,285	2,345	2,385	2,250
MEDC	Positive	Trading	Negative	Hold	1,285	1,275	1,265	1,295	1,305	1,245
MTEL	Positive	Trading	Negative	Hold	670	660	650	680	690	640
PGAS	Negative	Trading	Positive	Hold	1,660	1,635	1,600	1,695	1,720	1,575
PGEO	Positive	Oversold	Negative	Spec. Buy	1,185	1,165	1,150	1,200	1,220	1,130
PTBA	Positive	Trading	Positive	Spec. Buy	2,750	2,705	2,680	2,775	2,820	2,635
SIDO	Positive	Trading	Negative	Hold	705	700	695	710	715	685
SMGR	Negative	Trading	Positive	Hold	4,040	4,000	3,980	4,060	4,100	3,920
TLKM	Positive	Trading	Positive	Spec. Buy	2,970	2,930	2,910	2,990	3,030	2,865
TOWR	Positive	Trading	Negative	Hold	810	805	795	820	825	780
UNTR	Negative	Overbought	Positive	Sell	26,600	26,075	25,575	27,100	27,625	25,200
UNVR	Positive	Oversold	Positive	Buy	2,360	2,335	2,330	2,365	2,390	2,295

OUR TEAM

Sukarno Alatas

Head of Equity Research

sukarno@kiwoom.co.id | 021 5010 5800

Abdul Azis Setyo Wibowo

Equity Research Analyst

azis@kiwoom.co.id | 021 5010 5800

Miftahul Khaer

Equity Research Analyst

khaer.miftahul@kiwoom.co.id | 021 5010 5800

Vicky Rosalinda

Equity Research Analyst

vicky.rosalinda@kiwoom.co.id | 021 5010 5800

Wahyu Saputra

Research Associate

wahyu.saputra@kiwoom.co.id | 021 5010 5800



OTHER DISCLOSURES

All Kiwoom's research reports made available to clients are simultaneously available on our own website <http://www.kiwoom.co.id/>. Not all research content is redistributed, e-mailed or made available to third-party aggregators. For all research reports available on a particular stock, please contact your sales representative. Any data discrepancies in this report could be the result of different calculations and/or adjustments.

DISCLAIMER This report has been prepared and issued by PT Kiwoom Sekuritas Indonesia. Information has been obtained from sources believed to be reliable but Kiwoom Securities do not warrant its completeness or accuracy. Forward-looking information or statements in this report contain information that is based on forecast of future results, estimates of amounts not yet determinable, assumptions, and therefore involve known and unknown risks and uncertainties which may cause the actual results, performance or achievements of their subject matter to be materially different from current expectations.

To the fullest extent allowed by law, PT Kiwoom Sekuritas Indonesia shall not be liable for any direct, indirect or consequential losses, loss of profits, damages, costs or expenses incurred or suffered by any person or organization arising from reliance on or use of any information contained on this report. The information that we provide should not be construed in any manner whatsoever as, personalized advice.

No mention of a particular security in this report constitutes a recommendation to buy, sell or hold that or any security, or that any particular security, portfolio of securities, transaction or investment strategy is suitable for any specific person. This report is being supplied to you solely for your information and may not be reproduced by, further distributed to or published in whole or in part by, any other person.