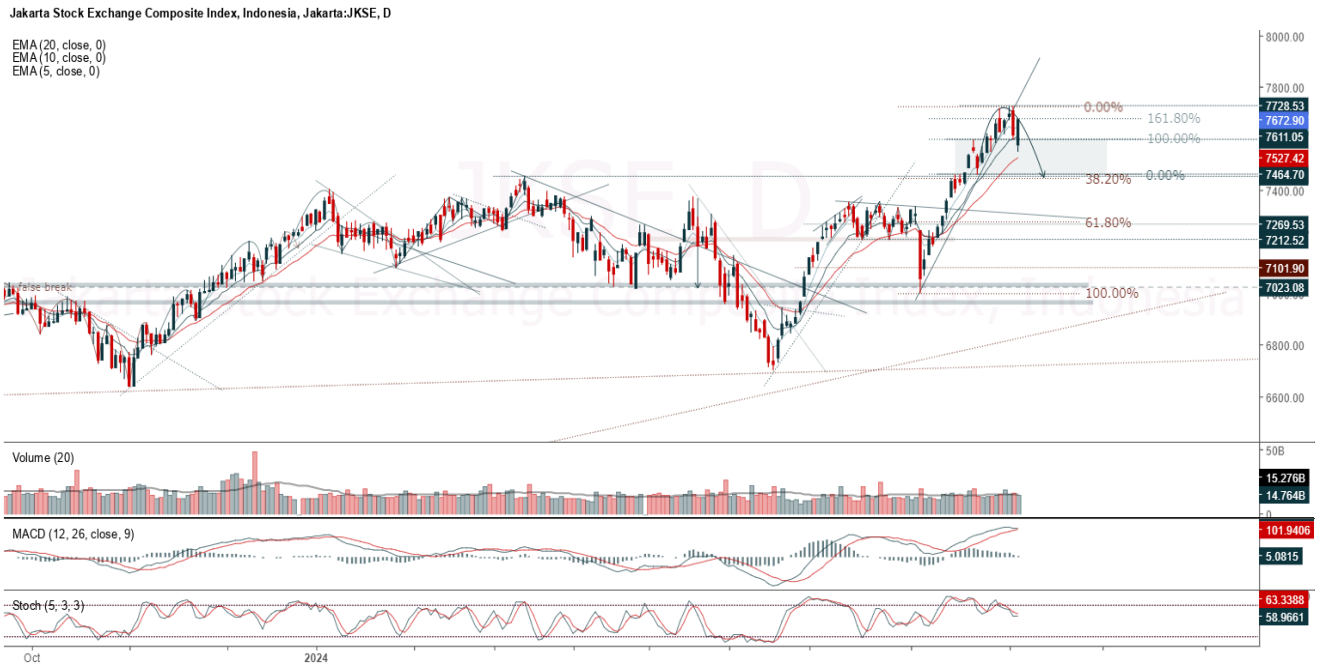


JCI Range Today 7,606 – 7,616 (Support), 7,715 – 7,726 (Resistance)



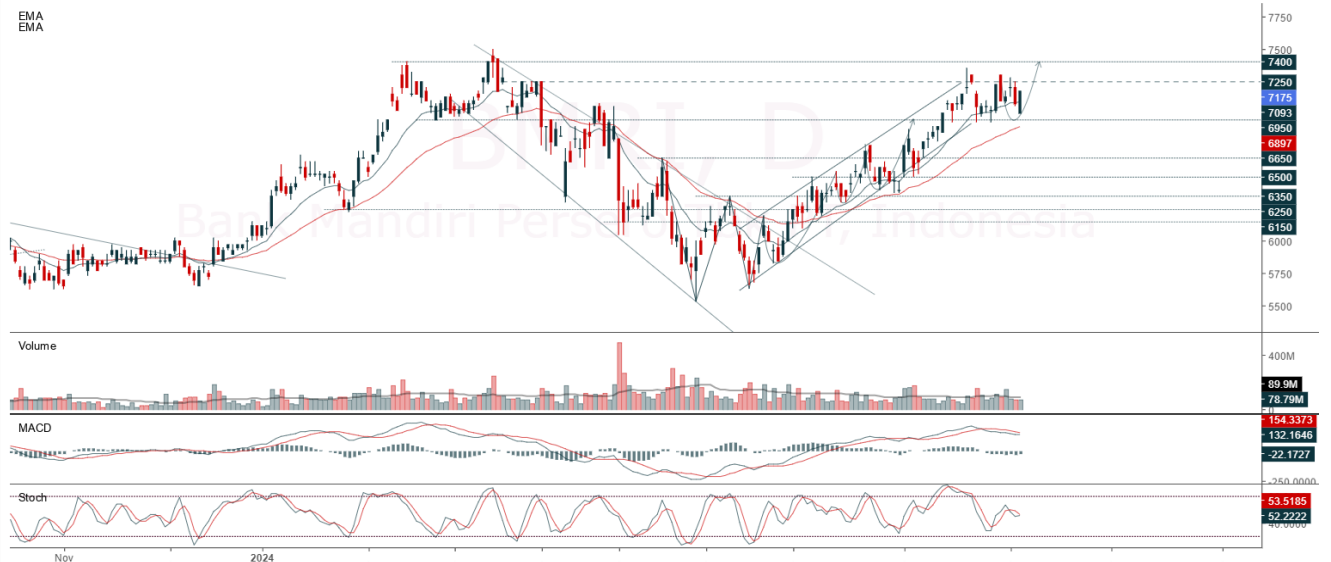
Jakarta Composite Index closed positive and breakup dynamic resistance at EMA 5. Indicator from stochastic is golden cross potential, MACD histogram is moving positive (line is flat) and volume is increased slightly. Bearish scenario: If it moves bearish again, JCI is expected to weaken again to the support range of 7,606 – 7,616. Bullish scenario: If JCI is able to move bullish, JCI has the opportunity strengthen to the resistance range 7,715 – 7,726.

Stock Pick Today: BMRI, CTRA, MAPA, TLKM

BMRI

Bank Mandiri Persero Tbk PT, Indonesia, Jakarta:BMRI, D

EMA
EMA



(BMRI). Price closed higher and breakup dynamic resistance at EMA 5 & 10. Price has the opportunity strengthen to the nearest resistance. Stochastic is golden cross potential, MACD histogram is moving bearish (line is sloping) and volume is increasing. Confirm buy if the next candle returns bullish or buy on support if it goes down first. Be careful if you fail to stay above the support level or become a support breakdown. **(Trading Buy)**

TRADING STRATEGY:

1. **Target Price:** The price has a bullish opportunity to test the resistance level 7,325. If it breaks level 7,325 then the price will go to level 7,425. We recommend to be careful if the price fails to break through or turn around the support area.

2. **Stop Loss:** To minimize the risk of loss, we recommend placing a stop loss at level 6,975.

Entry Buy : 7,075 – 7,175

Target Price : 7,325 – 7,425

Support : 7,000 – 7,075

Cut loss : 6,975

CTRA

Ciputra Development Tbk, Indonesia, Jakarta:CTRA, D

EMA (13, close, 0)
EMA (34, close, 0)



(CTRA). Price closed higher and breakout resistance. Price has the opportunity strengthen to the next resistance. Stochastic is golden cross, MACD histogram is moving positive direction (line is golden cross potential) and volume is increasing. Confirm buy if the next candle returns bullish or buy on support if it goes down first. Be careful if you fail to stay above the support level or become a support breakdown.

(Trading Buy)

TRADING STRATEGY:

1. Target Price: The price has a bullish opportunity to test the resistance level 1,360. If it breaks level 1,360 then the price will go to level 1,385. We recommend to be careful if the price fails to break through or turn around the support area.
2. Stop Loss: To minimize the risk of loss, we recommend placing a stop loss at level 1,295.

Entry Buy : 1,310 – 1,335
Target Price : 1,360 – 1,385
Support : 1,300 – 1,310
Cut loss : 1,295

MAPA

MAP Aktif Adiperkasa Tbk PT, Indonesia, Jakarta:MAPA, D



(MAPA). Price closed higher and breakout resistance. Price has the opportunity strengthen to the next resistance. Stochastic is bearish, MACD histogram is moving positive (line is bullish) and volume is increasing. Confirm buy if the next candle returns bullish or buy on support if it goes down first. Be careful if you fail to stay above the support level or become a support breakdown. **(Trading Buy)**

TRADING STRATEGY:

1. **Target Price:** The price has a bullish opportunity to test the resistance level 885. If it breaks level 885 then the price will go to level 900. We recommend to be careful if the price fails to break through or turn around the support area.

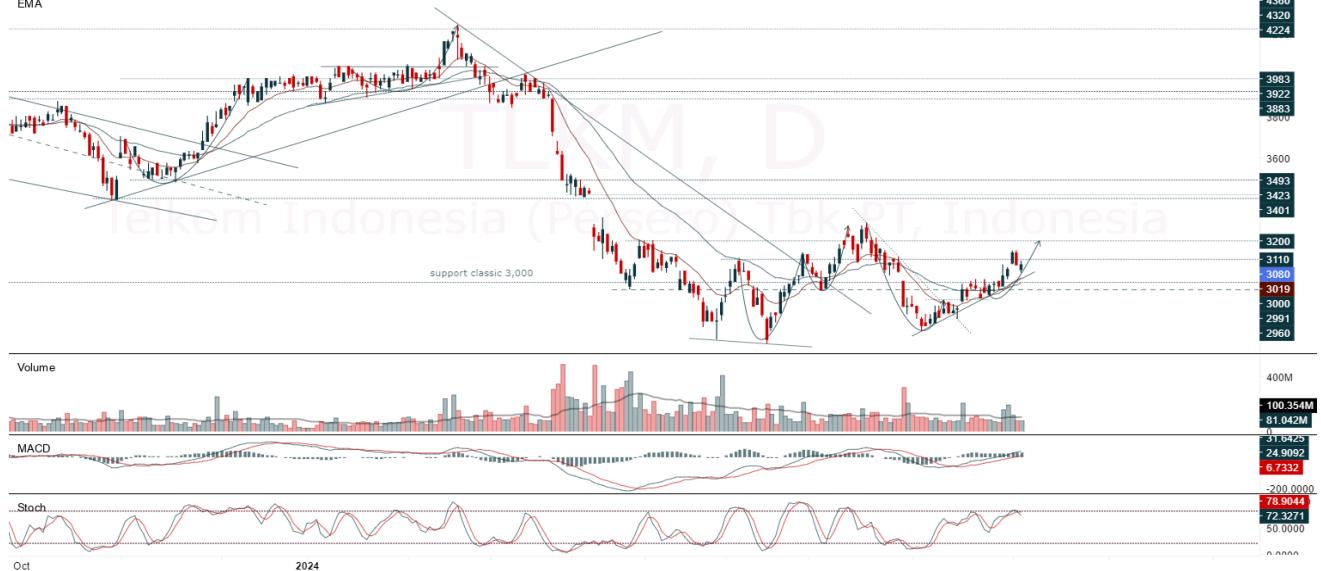
2. **Stop Loss:** To minimize the risk of loss, we recommend placing a stop loss at level 840.

Entry Buy : 850 – 865
Target Price : 885 – 900
Support : 845 – 850
Cut loss : 840

TLKM

Telkom Indonesia (Persero) Tbk PT, Indonesia, Jakarta:TLKM, D

EMA
EMA



(TLKM). Price closed higher and breakup dynamic resistance at EMA 5. Price has the opportunity strengthen to the nearest resistance. Stochastic is death cross, MACD histogram is moving positive (line is bullish) and volume is neutral. Confirm buy if the next candle returns bullish or buy on support if it goes down first. Be careful if you fail to stay above the support level or become a support breakdown.
(Trading Buy)

TRADING STRATEGY:

1. **Target Price:** The price has a bullish opportunity to test the resistance level 3,140. If it breaks level 3,140 then the price will go to level 3,190. We recommend to be careful if the price fails to break through or turn around the support area.

2. **Stop Loss:** To minimize the risk of loss, we recommend placing a stop loss at level 2,990.

Entry Buy : 3,020 – 3,080
Target Price : 3,140 – 3,190
Support : 3,000 – 3,020
Cut loss : 2,990

Forecast – Technical Analysis

Ticker	MA5	RSI Rec	MACD Trend	Recomm.	Pivot Point	Support		Resistance		Stop Loss Level
						1	2	1	2	
JCI	Negative	Overbought	Positive	Sell	7,625	7,550	7,500	7,700	7,750	7,375
ACES	Positive	Trading	Positive	Spec. Buy	725	715	705	735	745	695
ADRO	Negative	Overbought	Positive	Sell	3,555	3,480	3,415	3,620	3,695	3,365
AKRA	Positive	Trading	Positive	Spec. Buy	1,440	1,420	1,395	1,465	1,485	1,370
AMMN	Positive	Trading	Positive	Spec. Buy	10,650	10,500	10,350	10,800	10,950	10,200
AMRT	Negative	Trading	Positive	Hold	2,895	2,885	2,865	2,915	2,925	2,820
ANTM	Positive	Trading	Negative	Hold	1,350	1,335	1,320	1,365	1,380	1,300
ARTO	Positive	Trading	Negative	Hold	2,775	2,740	2,695	2,820	2,855	2,655
ASII	Negative	Overbought	Positive	Sell	5,050	5,025	4,980	5,100	5,125	4,905
BBCA	Positive	Trading	Negative	Hold	10,225	10,150	10,050	10,325	10,400	9,900
BBNI	Positive	Trading	Negative	Hold	5,350	5,300	5,275	5,375	5,425	5,175
BBRI	Positive	Overbought	Positive	Hold	5,125	5,075	5,050	5,150	5,200	4,970
BBTN	Positive	Trading	Positive	Spec. Buy	1,370	1,350	1,345	1,375	1,395	1,320
BMRI	Positive	Trading	Negative	Hold	7,100	7,000	6,925	7,175	7,275	6,800
BRIS	Positive	Trading	Negative	Hold	2,570	2,530	2,500	2,600	2,640	2,465
BRPT	Positive	Trading	Positive	Spec. Buy	1,100	1,070	1,045	1,125	1,155	1,030
BUKA	Positive	Trading	Positive	Spec. Buy	117	114	113	118	121	111
CPIN	Positive	Oversold	Negative	Spec. Buy	4,830	4,805	4,760	4,875	4,900	4,685
ESSA	Negative	Overbought	Positive	Sell	850	835	815	870	885	805
EXCL	Negative	Trading	Positive	Hold	2,240	2,210	2,190	2,260	2,290	2,155
GGRM	Negative	Trading	Positive	Hold	15,975	15,800	15,675	16,100	16,275	15,450
GOTO	Negative	Trading	Negative	Sell	52	51	50	53	54	49
HRUM	Positive	Trading	Negative	Hold	1,320	1,310	1,290	1,340	1,350	1,270
ICBP	Negative	Trading	Negative	Sell	11,250	11,075	10,900	11,425	11,600	10,725
INCO	Negative	Trading	Positive	Hold	3,720	3,665	3,640	3,745	3,800	3,585
INDF	Positive	Overbought	Positive	Hold	6,700	6,675	6,625	6,750	6,775	6,525
INKP	Positive	Trading	Negative	Hold	8,050	7,975	7,850	8,175	8,250	7,750
INTP	Positive	Trading	Negative	Hold	6,875	6,800	6,700	6,975	7,050	6,600
ISAT	Positive	Oversold	Negative	Spec. Buy	10,500	10,250	9,950	10,800	11,050	9,800
ITMG	Negative	Overbought	Positive	Sell	27,650	27,375	27,200	27,825	28,100	26,800
JSMR	Positive	Trading	Negative	Hold	5,225	5,175	5,125	5,275	5,325	5,050
KLBF	Positive	Trading	Negative	Hold	1,710	1,685	1,650	1,745	1,770	1,625
MAPI	Positive	Trading	Positive	Spec. Buy	1,480	1,445	1,415	1,510	1,545	1,395
MBMA	Positive	Trading	Positive	Spec. Buy	535	525	515	545	555	505
MDKA	Positive	Trading	Positive	Spec. Buy	2,305	2,265	2,225	2,345	2,385	2,190
MEDC	Positive	Trading	Negative	Hold	1,220	1,200	1,190	1,230	1,250	1,170
MTEL	Positive	Trading	Negative	Hold	655	645	635	665	675	625
PGAS	Positive	Trading	Negative	Hold	1,535	1,525	1,510	1,550	1,560	1,490
PGEO	Positive	Oversold	Negative	Spec. Buy	1,135	1,125	1,120	1,140	1,150	1,100
PTBA	Positive	Overbought	Positive	Hold	2,770	2,730	2,700	2,800	2,840	2,660
SIDO	Positive	Oversold	Negative	Spec. Buy	655	645	620	680	690	610
SMGR	Negative	Trading	Positive	Hold	4,005	3,970	3,945	4,030	4,065	3,885
TLKM	Negative	Trading	Positive	Hold	3,070	3,040	3,010	3,100	3,130	2,965
TOWR	Positive	Trading	Negative	Hold	815	805	795	825	835	785
UNTR	Positive	Overbought	Positive	Hold	27,575	27,450	27,250	27,775	27,900	26,825
UNVR	Negative	Oversold	Positive	Spec. Buy	2,245	2,230	2,215	2,260	2,275	2,180

OUR TEAM

Sukarno Alatas

Head of Equity Research

sukarno@kiwoom.co.id | 021 5010 5800

Abdul Azis Setyo Wibowo

Equity Research Analyst

azis@kiwoom.co.id | 021 5010 5800

Miftahul Khaer

Equity Research Analyst

khaer.miftahul@kiwoom.co.id | 021 5010 5800

Vicky Rosalinda

Equity Research Analyst

vicky.rosalinda@kiwoom.co.id | 021 5010 5800

Wahyu Saputra

Research Associate

wahyu.saputra@kiwoom.co.id | 021 5010 5800



OTHER DISCLOSURES

All Kiwoom's research reports made available to clients are simultaneously available on our own website <http://www.kiwoom.co.id/>. Not all research content is redistributed, e-mailed or made available to third-party aggregators. For all research reports available on a particular stock, please contact your sales representative. Any data discrepancies in this report could be the result of different calculations and/or adjustments.

DISCLAIMER This report has been prepared and issued by PT Kiwoom Sekuritas Indonesia. Information has been obtained from sources believed to be reliable but Kiwoom Securities do not warrant its completeness or accuracy. Forward-looking information or statements in this report contain information that is based on forecast of future results, estimates of amounts not yet determinable, assumptions, and therefore involve known and unknown risks and uncertainties which may cause the actual results, performance or achievements of their subject matter to be materially different from current expectations.

To the fullest extent allowed by law, PT Kiwoom Sekuritas Indonesia shall not be liable for any direct, indirect or consequential losses, loss of profits, damages, costs or expenses incurred or suffered by any person or organization arising from reliance on or use of any information contained on this report. The information that we provide should not be construed in any manner whatsoever as, personalized advice.

No mention of a particular security in this report constitutes a recommendation to buy, sell or hold that or any security, or that any particular security, portfolio of securities, transaction or investment strategy is suitable for any specific person. This report is being supplied to you solely for your information and may not be reproduced by, further distributed to or published in whole or in part by, any other person.