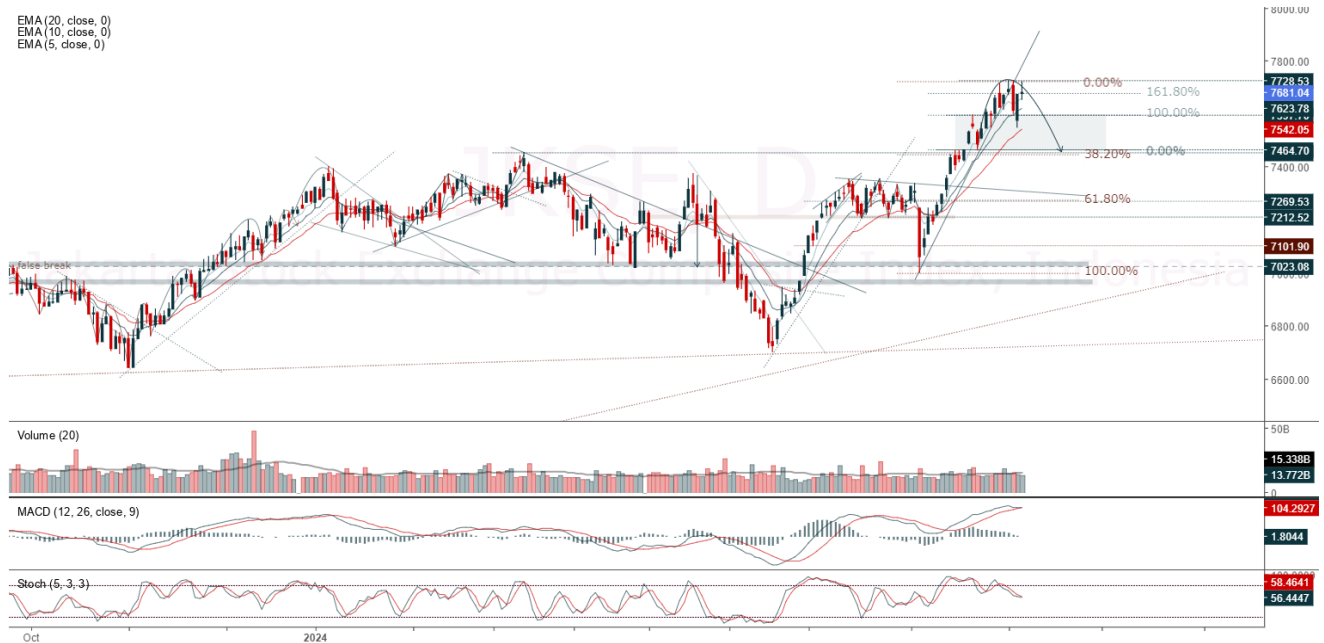


## JCI Range Today 7,616 – 7,627 (Support), 7,715 – 7,726 (Resistance)

Jakarta Stock Exchange Composite Index, Indonesia, Jakarta:JKSE, D

EMA (20, close, 0)  
EMA (10, close, 0)  
EMA (5, close, 0)



**Jakarta Composite Index** closed positive with bullish candle. Indicator from stochastic is golden cross potential, MACD histogram is moving negative direction (line is sloping) and volume is neutral. Bearish scenario: If it moves bearish again, JCI is expected to weaken again to the support range of 7,616 – 7,627. Bullish scenario: If JCI is able to move bullish, JCI has the opportunity strengthen to the resistance range 7,715 – 7,726.

**Stock Pick Today: BBNI, ICBP, ISAT, JPFA**

## BBNI

Bank Negara Indonesia Tbk, Indonesia, Jakarta:BBNI, D

EMA (13, close, 0)  
EMA (34, close, 0)



**(BBNI).** Price closed higher and breakup minor trendline resistance. Price has the opportunity strengthen to the nearest resistance. Stochastic is still bullish, MACD histogram is moving positive direction (line is golden cross potential) and volume is increasing. Confirm buy if the next candle returns bullish or buy on support if it goes down first. Be careful if you fail to stay above the support level or become a support breakdown. **(Trading Buy)**

### TRADING STRATEGY:

1. **Target Price:** The price has a bullish opportunity to test the resistance level 5,550. If it breaks level 5,550 then the price will go to level 5,650. We recommend to be careful if the price fails to break through or turn around the support area.

2. **Stop Loss:** To minimize the risk of loss, we recommend placing a stop loss at level 5,275.

Entry Buy : 5,350 – 5,450  
Target Price : 5,550 – 5,650  
Support : 5,300 – 5,350  
Cut loss : 5,275

**ICBP**

Indofood Cbp Sukses Makmur Tbk, Indonesia, Jakarta:ICBP, D

EMA (13, close, 0)  
EMA (34, close, 0)



**(ICBP).** Price closed higher and breakout resistance. Price has the opportunity strengthen to the next resistance. Stochastic is golden cross, MACD histogram is moving positive direction (line is golden cross potential) and volume is increasing. Confirm buy if the next candle returns bullish or buy on support if it goes down first. Be careful if you fail to stay above the support level or become a support breakdown.  
**(Trading Buy)**

**TRADING STRATEGY:**

1. **Target Price:** The price has a bullish opportunity to test the resistance level 11,875. If it breaks level 11,875 then the price will go to level 12,075. We recommend to be careful if the price fails to break through or turn around the support area.
2. **Stop Loss:** To minimize the risk of loss, we recommend placing a stop loss at level 11,325.

Entry Buy : 11,450 – 11,650  
Target Price : 11,875 – 12,075  
Support : 11,350 – 11,450  
Cut loss : 11,325

## ISAT

Indosat Tbk, Indonesia, Jakarta:ISAT, D

EMA (13, close, 0)  
EMA (34, close, 0)



**(ISAT).** Price closed higher and breakout resistance. Price has the opportunity strengthen to the next resistance. Stochastic is still bullish, MACD histogram is moving positive (line is golden cross) and volume is increasing. Confirm buy if the next candle returns bullish or buy on support if it goes down first. Be careful if you fail to stay above the support level or become a support breakdown. **(Trading Buy)**

### TRADING STRATEGY:

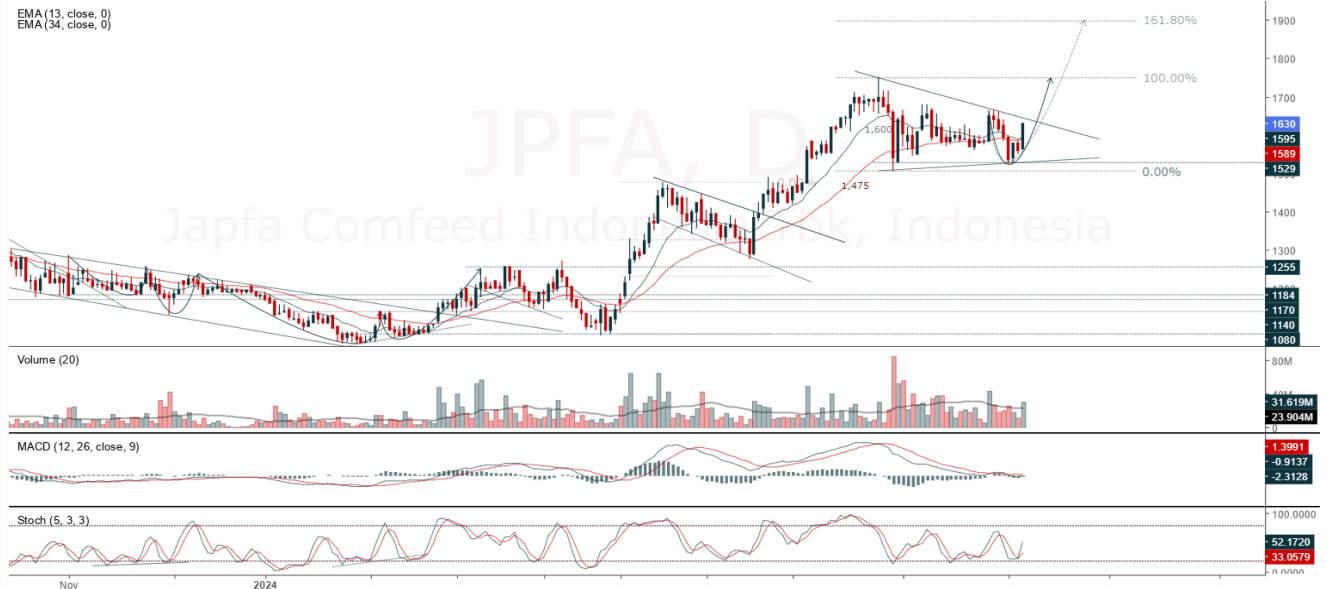
- 1. Target Price:** The price has a bullish opportunity to test the resistance level 11,150. If it breaks level 11,150 then the price will go to level 11,350. We recommend to be careful if the price fails to break through or turn around the support area.
- 2. Stop Loss:** To minimize the risk of loss, we recommend placing a stop loss at level 10,625.

Entry Buy : 10,750 – 10,950  
Target Price : 11,150 – 11,350  
Support : 10,650 – 10,750  
Cut loss : 10,625

**JPFA**

Japfa Comfeed Indonesia Tbk, Indonesia, Jakarta:JPFA, D

EMA(13, close, 0)  
EMA(34, close, 0)



**(JPFA).** Price closed higher and breakup dynamic resistance at EMA 5 & 10. Price has the opportunity strengthen to the nearest resistance. Stochastic is bullish, MACD histogram is moving positive direction (line is golden cross potential) and volume is increasing. Confirm buy if the next candle returns bullish or buy on support if it goes down first. Be careful if you fail to stay above the support level or become a support breakdown. **(Trading Buy)**

**TRADING STRATEGY:**

1. **Target Price:** The price has a bullish opportunity to test the resistance level 1,660. If it breaks level 1,660 then the price will go to level 1,690. We recommend to be careful if the price fails to break through or turn around the support area.

2. **Stop Loss:** To minimize the risk of loss, we recommend placing a stop loss at level 1,580.

Entry Buy : 1,600 – 1,630  
Target Price : 1,660 – 1,690  
Support : 1,585 – 1,600  
Cut loss : 1,580

**Forecast – Technical Analysis**

Ticker	MA5	RSI Rec	MACD Trend	Recomm.	Pivot Point	Support		Resistance		Stop Loss Level
						1	2	1	2	
JCI	Negative	Overbought	Positive	Sell	7,675	7,650	7,600	7,725	7,750	7,500
ACES	Negative	Trading	Positive	Hold	765	730	695	800	835	685
ADRO	Negative	Overbought	Positive	Sell	3,535	3,500	3,425	3,610	3,645	3,375
AKRA	Positive	Oversold	Negative	Spec. Buy	1,430	1,425	1,410	1,445	1,450	1,390
AMMN	Positive	Trading	Positive	Spec. Buy	10,650	10,525	10,325	10,850	10,975	10,175
AMRT	Negative	Trading	Positive	Hold	2,890	2,865	2,830	2,925	2,950	2,785
ANTM	Positive	Trading	Negative	Hold	1,350	1,330	1,310	1,370	1,390	1,290
ARTO	Positive	Trading	Negative	Hold	2,780	2,745	2,720	2,805	2,840	2,675
ASII	Negative	Trading	Negative	Sell	5,075	5,050	5,000	5,125	5,150	4,930
BBCA	Negative	Trading	Negative	Sell	10,300	10,250	10,200	10,350	10,400	10,050
BBNI	Negative	Trading	Negative	Sell	5,400	5,375	5,300	5,475	5,500	5,225
BBRI	Negative	Trading	Positive	Hold	5,125	5,100	5,050	5,175	5,200	4,975
BBTN	Negative	Trading	Positive	Hold	1,390	1,370	1,350	1,410	1,430	1,330
BMRI	Negative	Trading	Negative	Sell	7,175	7,100	7,075	7,200	7,275	6,950
BRIS	Positive	Trading	Negative	Hold	2,610	2,560	2,510	2,660	2,710	2,470
BRPT	Positive	Trading	Negative	Hold	1,110	1,090	1,075	1,125	1,145	1,055
BUKA	Positive	Trading	Negative	Hold	116	115	114	117	118	112
CPIN	Positive	Oversold	Negative	Spec. Buy	4,860	4,805	4,780	4,885	4,940	4,705
ESSA	Negative	Trading	Positive	Hold	855	835	825	865	885	815
EXCL	Negative	Trading	Positive	Hold	2,310	2,235	2,170	2,375	2,450	2,135
GGRM	Negative	Trading	Positive	Hold	16,000	15,975	15,850	16,125	16,150	15,625
GOTO	Negative	Trading	Negative	Sell	52	51	50	53	54	49
HRUM	Positive	Trading	Negative	Hold	1,350	1,325	1,305	1,370	1,395	1,285
ICBP	Negative	Trading	Negative	Sell	11,575	11,425	11,300	11,700	11,850	11,125
INCO	Negative	Trading	Negative	Sell	3,680	3,655	3,630	3,705	3,730	3,575
INDF	Negative	Overbought	Negative	Strong Sell	6,850	6,700	6,575	6,975	7,125	6,475
INKP	Positive	Trading	Negative	Hold	8,225	8,075	7,925	8,375	8,525	7,800
INTP	Positive	Oversold	Negative	Spec. Buy	6,800	6,775	6,725	6,850	6,875	6,625
ISAT	Negative	Trading	Negative	Sell	10,825	10,675	10,425	11,075	11,225	10,275
ITMG	Negative	Overbought	Positive	Sell	27,400	27,125	26,875	27,650	27,925	26,450
JSMR	Positive	Oversold	Negative	Spec. Buy	5,300	5,200	5,125	5,375	5,475	5,050
KLBF	Positive	Overbought	Negative	Sell	1,720	1,675	1,650	1,745	1,790	1,625
MAPI	Positive	Trading	Negative	Hold	1,485	1,455	1,415	1,525	1,555	1,395
MBMA	Positive	Trading	Positive	Spec. Buy	535	535	525	545	545	520
MDKA	Positive	Trading	Negative	Hold	2,290	2,255	2,240	2,305	2,340	2,205
MEDC	Positive	Oversold	Negative	Spec. Buy	1,225	1,205	1,185	1,245	1,265	1,165
MTEL	Positive	Oversold	Negative	Spec. Buy	650	640	620	670	680	610
PGAS	Positive	Oversold	Negative	Spec. Buy	1,535	1,520	1,515	1,540	1,555	1,490
PGEO	Negative	Oversold	Negative	Spec. Buy	1,135	1,135	1,125	1,145	1,145	1,110
PTBA	Positive	Trading	Positive	Spec. Buy	2,750	2,720	2,680	2,790	2,820	2,640
SIDO	Positive	Oversold	Negative	Spec. Buy	675	665	660	680	690	650
SMGR	Negative	Trading	Negative	Sell	4,020	3,960	3,920	4,060	4,120	3,860
TLKM	Negative	Trading	Positive	Hold	3,055	3,015	2,985	3,085	3,125	2,940
TOWR	Positive	Trading	Negative	Hold	825	820	805	840	845	795
UNTR	Negative	Overbought	Positive	Sell	27,525	27,400	27,125	27,800	27,925	26,725
UNVR	Negative	Oversold	Positive	Spec. Buy	2,235	2,215	2,205	2,245	2,265	2,170

## OUR TEAM

**Sukarno Alatas**

Head of Equity Research

[sukarno@kiwoom.co.id](mailto:sukarno@kiwoom.co.id) | 021 5010 5800**Abdul Azis Setyo Wibowo**

Equity Research Analyst

[azis@kiwoom.co.id](mailto:azis@kiwoom.co.id) | 021 5010 5800**Miftahul Khaer**

Equity Research Analyst

[khaer.miftahul@kiwoom.co.id](mailto:khaer.miftahul@kiwoom.co.id) | 021 5010 5800**Vicky Rosalinda**

Equity Research Analyst

[vicky.rosalinda@kiwoom.co.id](mailto:vicky.rosalinda@kiwoom.co.id) | 021 5010 5800**Wahyu Saputra**

Research Associate

[wahyu.saputra@kiwoom.co.id](mailto:wahyu.saputra@kiwoom.co.id) | 021 5010 5800**OTHER DISCLOSURES**

All Kiwoom's research reports made available to clients are simultaneously available on our own website <http://www.kiwoom.co.id/>. Not all research content is redistributed, e-mailed or made available to third-party aggregators. For all research reports available on a particular stock, please contact your sales representative. Any data discrepancies in this report could be the result of different calculations and/or adjustments.

**DISCLAIMER** This report has been prepared and issued by PT Kiwoom Sekuritas Indonesia. Information has been obtained from sources believed to be reliable but Kiwoom Securities do not warrant its completeness or accuracy. Forward-looking information or statements in this report contain information that is based on forecast of future results, estimates of amounts not yet determinable, assumptions, and therefore involve known and unknown risks and uncertainties which may cause the actual results, performance or achievements of their subject matter to be materially different from current expectations.

To the fullest extent allowed by law, PT Kiwoom Sekuritas Indonesia shall not be liable for any direct, indirect or consequential losses, loss of profits, damages, costs or expenses incurred or suffered by any person or organization arising from reliance on or use of any information contained on this report. The information that we provide should not be construed in any manner whatsoever as, personalized advice.

No mention of a particular security in this report constitutes a recommendation to buy, sell or hold that or any security, or that any particular security, portfolio of securities, transaction or investment strategy is suitable for any specific person. This report is being supplied to you solely for your information and may not be reproduced by, further distributed to or published in whole or in part by, any other person.