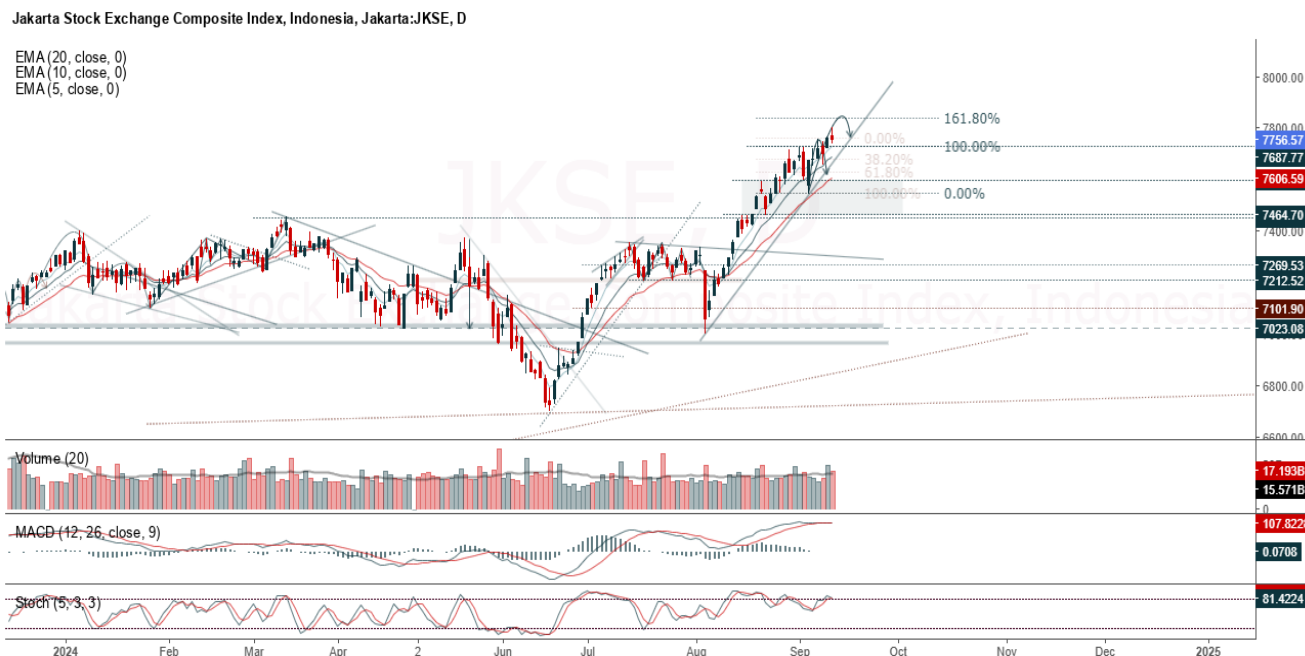


JCI Range Today 7,694 – 7,702 (Support), 7,802 – 7,810 (Resistance)



Jakarta Composite Index closed negative with doji candle. Indicator from stochastic is death cross, MACD histogram is moving positive (line is bullish) and volume is decreasing. Bearish scenario: If it moves bearish again, JCI is expected to weaken again to the support range 7,694 – 7,702. Bullish scenario: If JCI is able to move bullish, JCI has the opportunity strengthen to the resistance range 7,802 – 7,810.

Stock Pick Today: BBCA, BRPT, ERAA, PSAB

BBCA

Bank Central Asia Tbk, Indonesia, Jakarta:BBCA, D

EMA
EMA



(BBCA). Price closed positive with dragonfly doji candle. Price has the opportunity strengthen to the nearest resistance. Stochastic is still bullish, MACD histogram is moving positive (line is golden cross) and volume is increasing. Confirm buy if the next candle returns bullish or buy on support if it goes down first. Be careful if you fail to stay above the support level or become a support breakdown.
(Trading Buy)

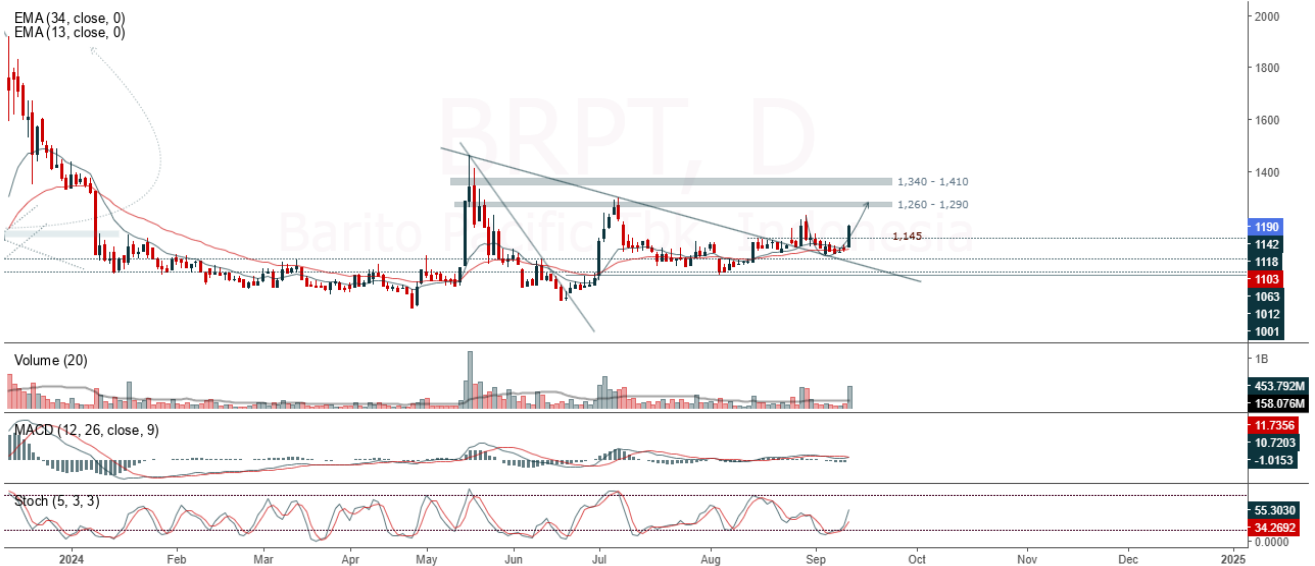
TRADING STRATEGY:

- 1. Target Price:** The price has a bullish opportunity to test the resistance level 10,625. If it breaks level 10,625 then the price will go to level 10,800. We recommend to be careful if the price fails to break through or turn around the support area.
- 2. Stop Loss:** To minimize the risk of loss, we recommend placing a stop loss at level 10,125.

Entry Buy : 10,225 – 10,425
Target Price : 10,625 – 10,800
Support : 10,150 – 10,225
Cut loss : 10,125

BRPT

Barito Pacific Tbk, Indonesia, Jakarta:BRPT, D



(BRPT). Price closed higher and breakout resistance. Price has the opportunity strengthen to the next resistance. Stochastic is still bullish, MACD histogram is moving positive (line is golden cross) and volume is increasing. Confirm buy if the next candle returns bullish or buy on support if it goes down first. Be careful if you fail to stay above the support level or become a support breakdown. **(Trading Buy)**

TRADING STRATEGY:

1. **Target Price:** The price has a bullish opportunity to test the resistance level 1,230. If it breaks level 1,230 then the price will go to level 1,260. We recommend to be careful if the price fails to break through or turn around the support area.

2. **Stop Loss:** To minimize the risk of loss, we recommend placing a stop loss at level 1,140.

Entry Buy : 1,160 – 1,190
 Target Price : 1,230 – 1,260
 Support : 1,145 – 1,160
 Cut loss : 1,140

ERAA

Erajaya Swasembada Tbk, Indonesia, Jakarta:ERAA, D

EMA (20, close, 0)
EMA (50, close, 0)



(ERAA). Price closed higher and breakout resistance. Price has the opportunity strengthen to the next resistance. Stochastic is death cross, MACD histogram is moving positive (line is golden cross) and volume is increasing. Confirm buy if the next candle returns bullish or buy on support if it goes down first. Be careful if you fail to stay above the support level or become a support breakdown. **(Trading Buy)**

TRADING STRATEGY:

1. **Target Price:** The price has a bullish opportunity to test the resistance level 448. If it breaks level 448 then the price will go to level 456. We recommend to be careful if the price fails to break through or turn around the support area.
2. **Stop Loss:** To minimize the risk of loss, we recommend placing a stop loss at level 428.

Entry Buy : 432 – 440
Target Price : 448 – 456
Support : 430 – 432
Cut loss : 428

PSAB

J Resources Asia Pasifik Tbk, Indonesia, Jakarta:PSAB, D

EMA (13, close, 0)
EMA (34, close, 0)



(PSAB). Price closed higher and breakout resistance. Price has the opportunity strengthen to the next resistance. Stochastic is bullish, MACD histogram is moving positive (line is bullish) and volume is increasing. Confirm buy if the next candle returns bullish or buy on support if it goes down first. Be careful if you fail to stay above the support level or become a support breakdown. **(Trading Buy)**

TRADING STRATEGY:

1. **Target Price:** The price has a bullish opportunity to test the resistance level 300. If it breaks level 300 then the price will go to level 306. We recommend to be careful if the price fails to break through or turn around the support area.

2. **Stop Loss:** To minimize the risk of loss, we recommend placing a stop loss at level 284.

Entry Buy : 288 – 294
Target Price : 300 – 306
Support : 286 – 288
Cut loss : 284

Forecast – Technical Analysis

Ticker	MA5	RSI Rec	MACD Trend	Recomm.	Pivot Point	Support		Resistance		Stop Loss Level
						1	2	1	2	
JCI	Negative	Overbought	Positive	Sell	7,775	7,725	7,700	7,800	7,825	7,575
ACES	Negative	Trading	Positive	Hold	780	765	750	795	810	740
ADRO	Positive	Overbought	Negative	Sell	3,505	3,475	3,445	3,535	3,565	3,390
AKRA	Positive	Trading	Negative	Hold	1,435	1,420	1,405	1,450	1,465	1,385
AMMN	Positive	Trading	Positive	Spec. Buy	10,475	10,325	10,175	10,625	10,775	10,025
AMRT	Negative	Overbought	Positive	Sell	3,105	3,015	2,965	3,155	3,245	2,920
ANTM	Positive	Oversold	Negative	Spec. Buy	1,325	1,305	1,295	1,335	1,355	1,275
ARTO	Negative	Trading	Negative	Sell	2,820	2,780	2,740	2,860	2,900	2,700
ASII	Positive	Trading	Negative	Hold	5,025	5,000	4,975	5,050	5,075	4,900
BBCA	Negative	Trading	Negative	Sell	10,400	10,400	10,325	10,475	10,475	10,175
BBNI	Negative	Overbought	Positive	Sell	5,700	5,625	5,600	5,725	5,800	5,500
BBRI	Negative	Overbought	Positive	Sell	5,200	5,150	5,075	5,275	5,325	4,995
BBTN	Negative	Overbought	Positive	Sell	1,440	1,415	1,395	1,460	1,485	1,370
BMRI	Negative	Overbought	Negative	Strong Sell	7,350	7,275	7,225	7,400	7,475	7,100
BRIS	Negative	Trading	Negative	Sell	2,700	2,630	2,560	2,770	2,840	2,520
BRPT	Negative	Trading	Negative	Sell	1,150	1,105	1,060	1,195	1,240	1,045
BUKA	Positive	Oversold	Negative	Spec. Buy	114	113	112	115	116	110
CPIN	Positive	Oversold	Negative	Spec. Buy	4,805	4,745	4,705	4,845	4,905	4,630
ESSA	Positive	Trading	Negative	Hold	825	810	790	845	860	775
EXCL	Negative	Trading	Positive	Hold	2,280	2,235	2,210	2,305	2,350	2,175
GGRM	Negative	Trading	Positive	Hold	16,100	15,975	15,900	16,175	16,300	15,650
GOTO	Negative	Overbought	Positive	Sell	56	55	54	57	58	53
HRUM	Positive	Trading	Negative	Hold	1,305	1,290	1,270	1,325	1,340	1,250
ICBP	Negative	Overbought	Negative	Strong Sell	11,575	11,550	11,500	11,625	11,650	11,325
INCO	Positive	Oversold	Negative	Spec. Buy	3,640	3,605	3,590	3,655	3,690	3,535
INDF	Negative	Overbought	Positive	Sell	7,000	6,975	6,925	7,050	7,075	6,825
INKP	Negative	Trading	Positive	Hold	8,475	8,350	8,225	8,600	8,725	8,100
INTP	Positive	Oversold	Negative	Spec. Buy	6,800	6,775	6,700	6,875	6,900	6,600
ISAT	Negative	Trading	Positive	Hold	10,875	10,750	10,600	11,025	11,150	10,450
ITMG	Positive	Trading	Negative	Hold	26,025	25,950	25,900	26,075	26,150	25,500
JSMR	Positive	Oversold	Negative	Spec. Buy	4,890	4,820	4,750	4,960	5,025	4,680
KLBF	Positive	Overbought	Negative	Sell	1,730	1,705	1,685	1,750	1,775	1,655
MAPI	Negative	Overbought	Positive	Sell	1,675	1,620	1,580	1,715	1,770	1,555
MBMA	Positive	Trading	Positive	Spec. Buy	535	530	530	535	540	520
MDKA	Positive	Trading	Negative	Hold	2,260	2,240	2,200	2,300	2,320	2,165
MEDC	Negative	Oversold	Negative	Spec. Buy	1,195	1,185	1,170	1,210	1,220	1,150
MTEL	Negative	Trading	Negative	Sell	665	655	645	675	685	635
PGAS	Positive	Oversold	Negative	Spec. Buy	1,485	1,475	1,465	1,495	1,505	1,440
PGEO	Negative	Trading	Negative	Sell	1,145	1,130	1,115	1,160	1,175	1,095
PTBA	Positive	Trading	Negative	Hold	2,665	2,635	2,625	2,675	2,705	2,585
SIDO	Positive	Oversold	Negative	Spec. Buy	670	660	645	685	695	635
SMGR	Negative	Trading	Negative	Sell	4,000	3,925	3,880	4,045	4,120	3,820
TLKM	Positive	Trading	Positive	Spec. Buy	3,035	3,020	3,005	3,050	3,065	2,960
TOWR	Negative	Overbought	Positive	Sell	870	860	840	890	900	830
UNTR	Positive	Trading	Negative	Hold	26,400	26,100	25,775	26,725	27,025	25,375
UNVR	Positive	Oversold	Positive	Buy	2,215	2,160	2,135	2,240	2,295	2,105

OUR TEAM

Sukarno Alatas

Head of Equity Research

sukarno@kiwoom.co.id | 021 5010 5800

Abdul Azis Setyo Wibowo

Equity Research Analyst

azis@kiwoom.co.id | 021 5010 5800

Miftahul Khaer

Equity Research Analyst

khaer.miftahul@kiwoom.co.id | 021 5010 5800

Vicky Rosalinda

Equity Research Analyst

vicky.rosalinda@kiwoom.co.id | 021 5010 5800

Wahyu Saputra

Research Associate

wahyu.saputra@kiwoom.co.id | 021 5010 5800



OTHER DISCLOSURES

All Kiwoom's research reports made available to clients are simultaneously available on our own website <http://www.kiwoom.co.id/>. Not all research content is redistributed, e-mailed or made available to third-party aggregators. For all research reports available on a particular stock, please contact your sales representative. Any data discrepancies in this report could be the result of different calculations and/or adjustments.

DISCLAIMER This report has been prepared and issued by PT Kiwoom Sekuritas Indonesia. Information has been obtained from sources believed to be reliable but Kiwoom Securities do not warrant its completeness or accuracy. Forward-looking information or statements in this report contain information that is based on forecast of future results, estimates of amounts not yet determinable, assumptions, and therefore involve known and unknown risks and uncertainties which may cause the actual results, performance or achievements of their subject matter to be materially different from current expectations.

To the fullest extent allowed by law, PT Kiwoom Sekuritas Indonesia shall not be liable for any direct, indirect or consequential losses, loss of profits, damages, costs or expenses incurred or suffered by any person or organization arising from reliance on or use of any information contained on this report. The information that we provide should not be construed in any manner whatsoever as, personalized advice.

No mention of a particular security in this report constitutes a recommendation to buy, sell or hold that or any security, or that any particular security, portfolio of securities, transaction or investment strategy is suitable for any specific person. This report is being supplied to you solely for your information and may not be reproduced by, further distributed to or published in whole or in part by, any other person.