

**JCI Range Today 7,748 – 7,761 (Support), 7,833 – 7,846 (Resistance)**



**Jakarta Composite Index** closed positive and back to rally. Indicator from stochastic is bullish, MACD histogram is moving positive (line is bullish) and volume is increasing. Bearish scenario: If it moves bearish again, JCI is expected to weaken again to the support range 7,748 – 7,761. Bullish scenario: If JCI is able to move bullish, JCI has the opportunity strengthen to the resistance range 7,833 – 7,846.

**Stock Pick Today: AKRA, MPMX, MYOR, TAPG**

## AKRA

Akr Corporindo Tbk, Indonesia, Jakarta:AKRA, D

EMA(13, close, 0)  
EMA(34, close, 0)



**(AKRA).** Price closed higher and back to rally. Price has the opportunity strengthen to the nearest resistance. Stochastic is still bullish, MACD histogram is moving positive direction (line is golden cross potential) and volume is increasing. Confirm buy if the next candle returns bullish or buy on support if it goes down first. Be careful if you fail to stay above the support level or become a support breakdown.

**(Trading Buy)**

### TRADING STRATEGY:

1. **Target Price:** The price has a bullish opportunity to test the resistance level 1,500. If it breaks level 1,500 then the price will go to level 1,525. We recommend to be careful if the price fails to break through or turn around the support area.

2. **Stop Loss:** To minimize the risk of loss, we recommend placing a stop loss at level 1,430.

Entry Buy : 1,445 – 1,470

Target Price : 1,500 – 1,525

Support : 1,435 – 1,445

Cut loss : 1,430

## MPMX

Mitra Pinasthika Mustika, Indonesia, Jakarta:MPMX, D

EMA (13, close, 0)  
EMA (34, close, 0)



**(MPMX)**. Price closed higher and breakout resistance. Price has the opportunity strengthen to the next resistance. Stochastic is bullish, MACD histogram is moving positive direction (line is golden cross potential) and volume is increasing. Confirm buy if the next candle returns bullish or buy on support if it goes down first. Be careful if you fail to stay above the support level or become a support breakdown.

### (Trading Buy)

### TRADING STRATEGY:

1. **Target Price:** The price has a bullish opportunity to test the resistance level 1,055. If it breaks level 1,055 then the price will go to level 1,075. We recommend to be careful if the price fails to break through or turn around the support area.

2. **Stop Loss:** To minimize the risk of loss, we recommend placing a stop loss at level 1,005.

Entry Buy : 1,015 – 1,035

Target Price : 1,055 – 1,075

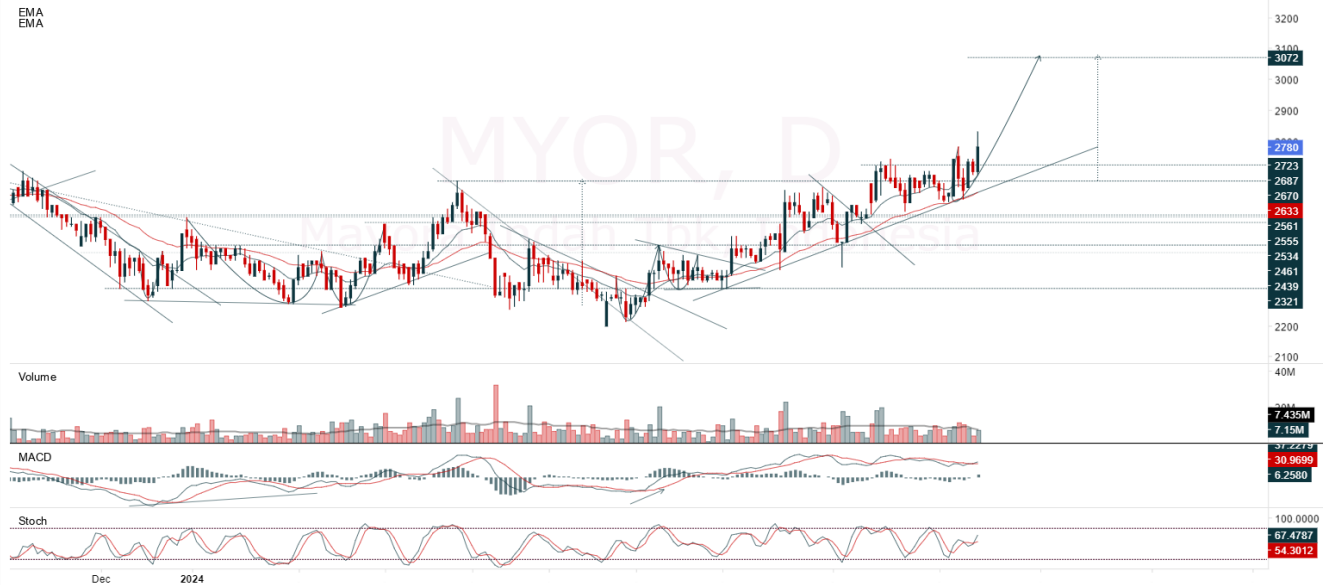
Support : 1,010 – 1,015

Cut loss : 1,005

**MYOR**

Mayora Indah Tbk, Indonesia, Jakarta:MYOR, D

EMA  
EMA



**(MYOR).** Price closed higher and breakout resistance. Price has the opportunity strengthen to the next resistance. Stochastic is golden cross, MACD histogram is moving positive (line is golden cross) and volume is increasing. Confirm buy if the next candle returns bullish or buy on support if it goes down first. Be careful if you fail to stay above the support level or become a support breakdown. **(Trading Buy)**

**TRADING STRATEGY:**

1. **Target Price:** The price has a bullish opportunity to test the resistance level 2,830. If it breaks level 2,830 then the price will go to level 2,880. We recommend to be careful if the price fails to break through or turn around the support area.

2. **Stop Loss:** To minimize the risk of loss, we recommend placing a stop loss at level 2,700.

Entry Buy : 2,730 – 2,780  
 Target Price : 2,830 – 2,880  
 Support : 2,710 – 2,730  
 Cut loss : 2,700

**TAPG**

Triputra Agro Persada Tbk PT, Indonesia, Jakarta:TAPG, D

EMA  
EMA



**(TAPG).** Price closed higher and breakout resistance. Price has the opportunity strengthen to the next resistance. Stochastic is golden cross, MACD histogram is moving positive (line is bullish) and volume is increasing. Confirm buy if the next candle returns bullish or buy on support if it goes down first. Be careful if you fail to stay above the support level or become a support breakdown. **(Trading Buy)**

**TRADING STRATEGY:**

1. Target Price: The price has a bullish opportunity to test the resistance level 840. If it breaks level 840 then the price will go to level 855. We recommend to be careful if the price fails to break through or turn around the support area.

2. Stop Loss: To minimize the risk of loss, we recommend placing a stop loss at level 800.

Entry Buy : 810 – 825  
Target Price : 840 – 855  
Support : 805 – 810  
Cut loss : 800

**Forecast – Technical Analysis**

Ticker	MA5	RSI Rec	MACD Trend	Recomm.	Pivot Point	Support		Resistance		Stop Loss Level
						1	2	1	2	
JCI	Negative	Overbought	Positive	Sell	7,800	7,775	7,750	7,825	7,850	7,625
ACES	Positive	Trading	Positive	Spec. Buy	765	765	750	780	780	740
ADRO	Negative	Overbought	Negative	Strong Sell	3,905	3,760	3,655	4,010	4,155	3,600
AKRA	Positive	Trading	Negative	Hold	1,460	1,440	1,420	1,480	1,500	1,395
AMMN	Positive	Trading	Positive	Spec. Buy	10,500	10,200	10,075	10,625	10,925	9,900
AMRT	Negative	Overbought	Positive	Sell	3,200	3,110	3,050	3,260	3,350	3,005
ANTM	Positive	Oversold	Negative	Spec. Buy	1,335	1,315	1,290	1,360	1,380	1,270
ARTO	Negative	Trading	Negative	Sell	2,825	2,765	2,735	2,855	2,915	2,690
ASII	Positive	Trading	Negative	Hold	5,050	5,000	4,990	5,050	5,100	4,915
BBCA	Negative	Trading	Negative	Sell	10,450	10,400	10,325	10,525	10,575	10,175
BBNI	Negative	Overbought	Positive	Sell	5,625	5,575	5,550	5,650	5,700	5,450
BBRI	Negative	Trading	Negative	Sell	5,175	5,150	5,100	5,225	5,250	5,025
BBTN	Negative	Overbought	Positive	Sell	1,445	1,430	1,420	1,455	1,470	1,400
BMRI	Negative	Overbought	Negative	Strong Sell	7,350	7,275	7,225	7,400	7,475	7,125
BRIS	Negative	Overbought	Negative	Strong Sell	2,830	2,755	2,690	2,895	2,970	2,645
BRPT	Negative	Overbought	Positive	Sell	1,185	1,130	1,090	1,225	1,280	1,075
BUKA	Positive	Oversold	Negative	Spec. Buy	116	114	112	118	120	110
CPIN	Positive	Oversold	Negative	Spec. Buy	4,815	4,760	4,715	4,860	4,915	4,645
ESSA	Positive	Trading	Negative	Hold	830	820	810	840	850	795
EXCL	Positive	Trading	Positive	Spec. Buy	2,285	2,260	2,235	2,310	2,335	2,200
GGRM	Negative	Trading	Positive	Hold	16,050	15,950	15,900	16,100	16,200	15,650
GOTO	Negative	Overbought	Positive	Sell	58	55	52	61	64	51
HRUM	Positive	Trading	Negative	Hold	1,325	1,290	1,260	1,355	1,390	1,240
ICBP	Positive	Overbought	Negative	Sell	11,525	11,400	11,375	11,550	11,675	11,200
INCO	Positive	Oversold	Negative	Spec. Buy	3,685	3,645	3,625	3,705	3,745	3,570
INDF	Negative	Overbought	Positive	Sell	7,100	7,000	6,900	7,200	7,300	6,775
INKP	Negative	Trading	Positive	Hold	8,350	8,275	8,125	8,500	8,575	8,000
INTP	Positive	Oversold	Negative	Spec. Buy	6,800	6,750	6,725	6,825	6,875	6,625
ISAT	Positive	Trading	Positive	Spec. Buy	10,825	10,750	10,625	10,950	11,025	10,475
ITMG	Positive	Oversold	Negative	Spec. Buy	26,225	25,925	25,675	26,475	26,775	25,300
JSMR	Positive	Oversold	Negative	Spec. Buy	4,870	4,825	4,770	4,925	4,970	4,695
KLBF	Negative	Trading	Negative	Sell	1,730	1,705	1,685	1,750	1,775	1,660
MAPI	Negative	Overbought	Positive	Sell	1,695	1,675	1,665	1,705	1,725	1,640
MBMA	Positive	Trading	Positive	Spec. Buy	540	530	515	555	565	510
MDKA	Positive	Trading	Negative	Hold	2,285	2,260	2,235	2,310	2,335	2,200
MEDC	Positive	Oversold	Negative	Spec. Buy	1,225	1,205	1,185	1,245	1,265	1,165
MTEL	Positive	Trading	Negative	Hold	655	650	640	665	670	630
PGAS	Positive	Oversold	Negative	Spec. Buy	1,490	1,475	1,455	1,510	1,525	1,435
PGEO	Positive	Oversold	Negative	Spec. Buy	1,140	1,130	1,125	1,145	1,155	1,110
PTBA	Positive	Trading	Negative	Hold	2,715	2,675	2,655	2,735	2,775	2,615
SIDO	Positive	Trading	Negative	Hold	680	670	665	685	695	655
SMGR	Positive	Trading	Negative	Hold	3,975	3,945	3,935	3,985	4,015	3,875
TLKM	Negative	Trading	Positive	Hold	3,060	3,045	3,040	3,065	3,080	2,990
TOWR	Negative	Overbought	Positive	Sell	860	855	845	870	875	835
UNTR	Positive	Trading	Negative	Hold	26,400	26,050	25,900	26,550	26,900	25,500
UNVR	Positive	Oversold	Positive	Buy	2,215	2,185	2,165	2,235	2,265	2,130

## OUR TEAM

**Sukarno Alatas**

Head of Equity Research

[sukarno@kiwoom.co.id](mailto:sukarno@kiwoom.co.id) | 021 5010 5800**Abdul Azis Setyo Wibowo**

Equity Research Analyst

[azis@kiwoom.co.id](mailto:azis@kiwoom.co.id) | 021 5010 5800**Miftahul Khaer**

Equity Research Analyst

[khaer.miftahul@kiwoom.co.id](mailto:khaer.miftahul@kiwoom.co.id) | 021 5010 5800**Vicky Rosalinda**

Equity Research Analyst

[vicky.rosalinda@kiwoom.co.id](mailto:vicky.rosalinda@kiwoom.co.id) | 021 5010 5800**Wahyu Saputra**

Research Associate

[wahyu.saputra@kiwoom.co.id](mailto:wahyu.saputra@kiwoom.co.id) | 021 5010 5800**OTHER DISCLOSURES**

All Kiwoom's research reports made available to clients are simultaneously available on our own website <http://www.kiwoom.co.id/>. Not all research content is redistributed, e-mailed or made available to third-party aggregators. For all research reports available on a particular stock, please contact your sales representative. Any data discrepancies in this report could be the result of different calculations and/or adjustments.

**DISCLAIMER** This report has been prepared and issued by PT Kiwoom Sekuritas Indonesia. Information has been obtained from sources believed to be reliable but Kiwoom Securities do not warrant its completeness or accuracy. Forward-looking information or statements in this report contain information that is based on forecast of future results, estimates of amounts not yet determinable, assumptions, and therefore involve known and unknown risks and uncertainties which may cause the actual results, performance or achievements of their subject matter to be materially different from current expectations.

To the fullest extent allowed by law, PT Kiwoom Sekuritas Indonesia shall not be liable for any direct, indirect or consequential losses, loss of profits, damages, costs or expenses incurred or suffered by any person or organization arising from reliance on or use of any information contained on this report. The information that we provide should not be construed in any manner whatsoever as, personalized advice.

No mention of a particular security in this report constitutes a recommendation to buy, sell or hold that or any security, or that any particular security, portfolio of securities, transaction or investment strategy is suitable for any specific person. This report is being supplied to you solely for your information and may not be reproduced by, further distributed to or published in whole or in part by, any other person.