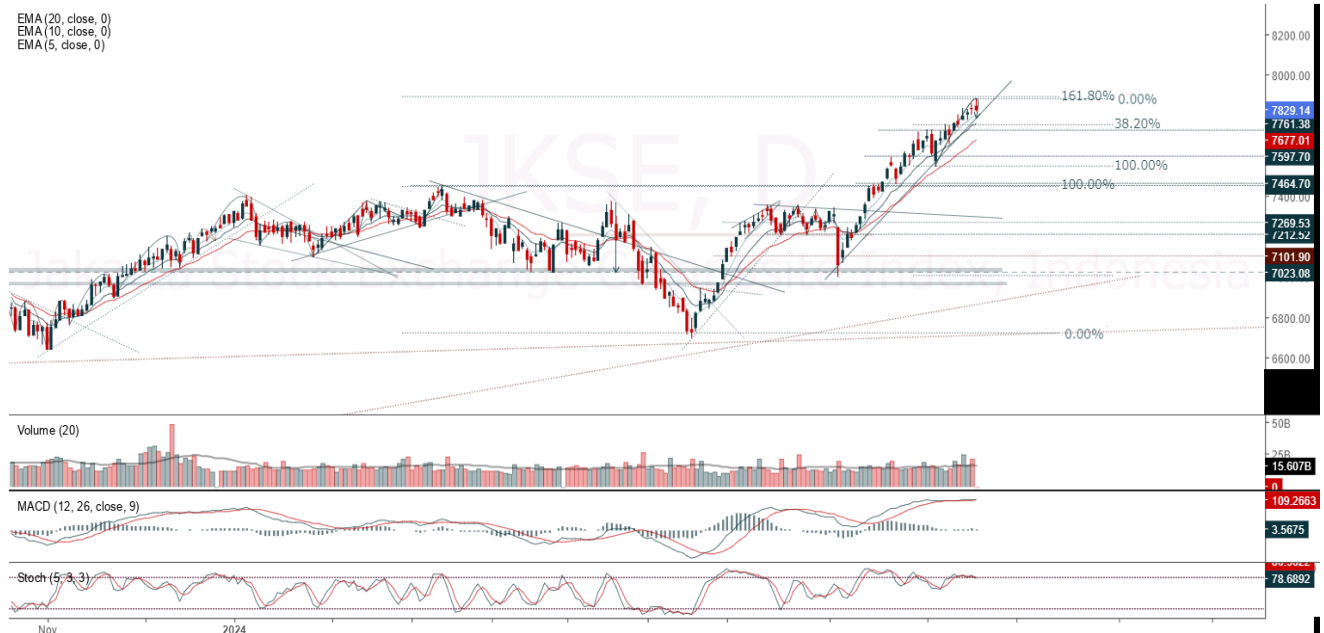


JCI Range Today 7,761 – 7,775 (Support), 7,879 – 7,893 (Resistance)

Jakarta Stock Exchange Composite Index, Indonesia, Jakarta:JKSE, D

EMA (20, close, 0)
EMA (10, close, 0)
EMA (5, close, 0)



Jakarta Composite Index closed negative with gravestone doji candle. Indicator from stochastic is death cross, MACD histogram is moving negative direction (line is sloping) and volume is increasing. Bearish scenario: If it moves bearish, JCI is expected to weaken to the support range 7,761 – 7,775. Bullish scenario: If JCI is able to move bullish, JCI has the opportunity strengthen to the resistance range 7,879 – 7,893.

Stock Pick Today: ACES, ASII, BBTN, SMRA

ACES

Ace Hardware Indonesia Tbk, Indonesia, Jakarta:ACES, D

EMA (13, close, 0)
EMA (34, close, 0)



(ACES). Price closed back to rally. Price has the opportunity strengthen to the nearest resistance. Stochastic is golden cross, MACD histogram is moving positive (line is bullish) and volume is increasing. Confirm buy if the next candle returns bullish or buy on support if it goes down first. Be careful if you fail to stay above the support level or become a support breakdown. **(Trading Buy)**

TRADING STRATEGY:

1. **Target Price:** The price has a bullish opportunity to test the resistance level 820. If it breaks level 820 then the price will go to level 835. We recommend to be careful if the price fails to break through or turn around the support area.

2. **Stop Loss:** To minimize the risk of loss, we recommend placing a stop loss at level 780.

Entry Buy : 790 – 805
Target Price : 820 – 835
Support : 785 – 790
Cut loss : 780

ASII

Astra International Tbk, Indonesia, Jakarta:ASII, D



(ASII). Price closed higher and breakout resistance. Price has the opportunity strengthen to the next resistance. Stochastic is still bullish, MACD histogram is moving positive direction (line is golden cross potential) and volume is increasing. Confirm buy if the next candle returns bullish or buy on support if it goes down first. Be careful if you fail to stay above the support level or become a support breakdown.
(Trading Buy)

TRADING STRATEGY:

1. **Target Price:** The price has a bullish opportunity to test the resistance level 5,350. If it breaks level 5,350 then the price will go to level 5,450. We recommend to be careful if the price fails to break through or turn around the support area.
2. **Stop Loss:** To minimize the risk of loss, we recommend placing a stop loss at level 5,100.

Entry Buy : 5,150 – 5,250
Target Price : 5,350 – 5,450
Support : 5,125 – 5,150
Cut loss : 5,100

BBTN

Bank Tabungan Negara Persero, Indonesia, Jakarta:BBTN, D

EMA
EMA



(BBTN). Price closed higher and breakup dynamic resistance at EMA 5. Price has the opportunity strengthen to the nearest resistance. Stochastic is golden cross, MACD histogram is moving positive (line is bullish) and volume is increasing. Confirm buy if the next candle returns bullish or buy on support if it goes down first. Be careful if you fail to stay above the support level or become a support breakdown. **(Trading Buy)**

TRADING STRATEGY:

1. **Target Price:** The price has a bullish opportunity to test the resistance level 1,515. If it breaks level 1,515 then the price will go to level 1,540. We recommend to be careful if the price fails to break through or turn around the support area.

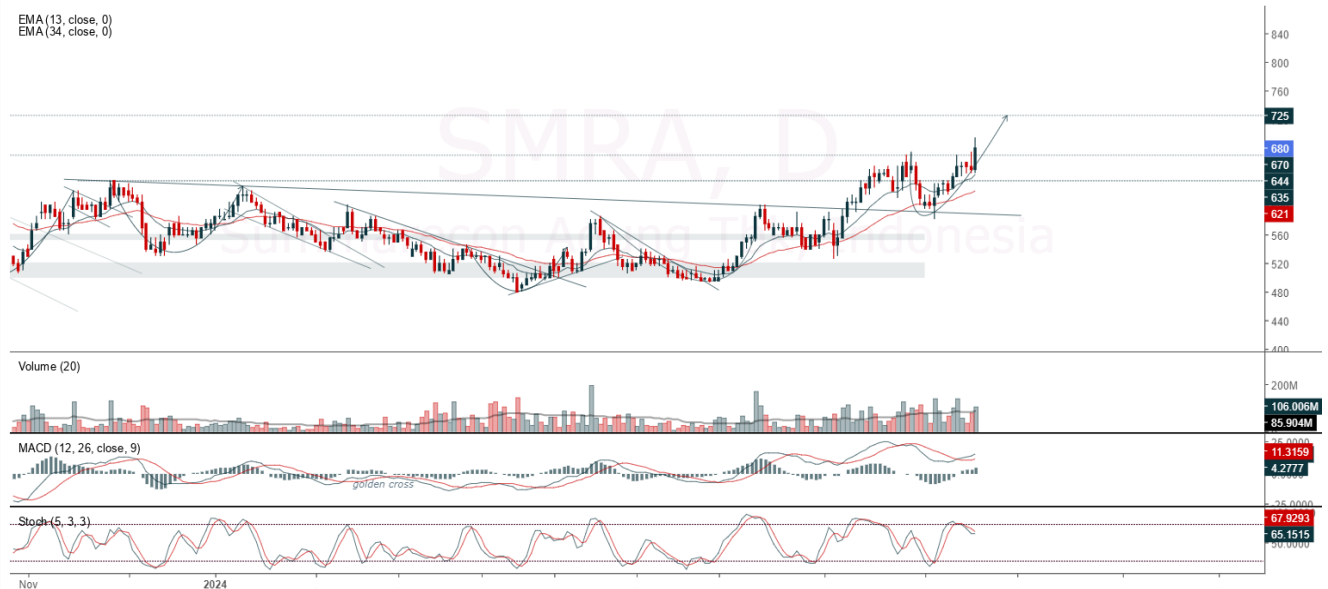
2. **Stop Loss:** To minimize the risk of loss, we recommend placing a stop loss at level 1,445.

Entry Buy : 1,460 – 1,485
 Target Price : 1,515 – 1,540
 Support : 1,450 – 1,460
 Cut loss : 1,445

SMRA

Summarecon Agung Tbk, Indonesia, Jakarta:SMRA, D

EMA(13, close, 0)
EMA(34, close, 0)



(SMRA). Price closed higher and breakout resistance. Price has the opportunity strengthen to the next resistance. Stochastic is golden cross potential, MACD histogram is moving positive (line is bullish) and volume is increasing. Confirm buy if the next candle returns bullish or buy on support if it goes down first. Be careful if you fail to stay above the support level or become a support breakdown. **(Trading Buy)**

TRADING STRATEGY:

1. **Target Price:** The price has a bullish opportunity to test the resistance level 695. If it breaks level 695 then the price will go to level 705. We recommend to be careful if the price fails to break through or turn around the support area.

2. **Stop Loss:** To minimize the risk of loss, we recommend placing a stop loss at level 660.

- Entry Buy : 670 – 680
- Target Price : 695 – 705
- Support : 665 – 670
- Cut loss : 660

Forecast – Technical Analysis

Ticker	MA5	RSI Rec	MACD Trend	Recomm.	Pivot Point	Support		Resistance		Stop Loss Level
						1	2	1	2	
JCI	Negative	Overbought	Positive	Sell	7,850	7,800	7,775	7,875	7,900	7,675
ACES	Positive	Trading	Positive	Spec. Buy	800	775	755	820	845	745
ADRO	Negative	Overbought	Positive	Sell	3,710	3,635	3,570	3,775	3,850	3,515
AKRA	Negative	Trading	Positive	Hold	1,480	1,465	1,455	1,490	1,505	1,430
AMMN	Positive	Trading	Negative	Hold	10,325	10,225	10,125	10,425	10,525	9,950
AMRT	Negative	Overbought	Positive	Sell	3,160	3,130	3,110	3,180	3,210	3,065
ANTM	Negative	Trading	Negative	Sell	1,375	1,365	1,360	1,380	1,390	1,335
ARTO	Negative	Overbought	Negative	Strong Sell	3,065	2,960	2,895	3,130	3,235	2,850
ASII	Negative	Trading	Negative	Sell	5,175	5,075	4,975	5,275	5,375	4,900
BBCA	Negative	Overbought	Positive	Sell	10,550	10,475	10,375	10,650	10,725	10,225
BBNI	Positive	Overbought	Positive	Hold	5,675	5,650	5,575	5,750	5,775	5,500
BBRI	Negative	Overbought	Negative	Strong Sell	5,350	5,325	5,300	5,375	5,400	5,225
BBTN	Negative	Overbought	Positive	Sell	1,470	1,445	1,420	1,495	1,520	1,395
BMRI	Negative	Overbought	Negative	Strong Sell	7,400	7,350	7,300	7,450	7,500	7,175
BRIS	Negative	Overbought	Positive	Sell	3,145	3,090	3,065	3,170	3,225	3,020
BRPT	Negative	Trading	Positive	Hold	1,150	1,130	1,120	1,160	1,180	1,100
BUKA	Negative	Trading	Positive	Hold	117	115	114	118	120	112
CPIN	Negative	Trading	Positive	Hold	4,950	4,920	4,890	4,980	5,000	4,815
ESSA	Negative	Trading	Negative	Sell	815	810	800	825	830	790
EXCL	Negative	Trading	Positive	Hold	2,295	2,265	2,245	2,315	2,345	2,210
GGRM	Positive	Trading	Positive	Spec. Buy	15,975	15,950	15,875	16,050	16,075	15,650
GOTO	Negative	Strong Sell	Positive	Sell	64	60	56	68	72	55
HRUM	Negative	Trading	Negative	Sell	1,355	1,330	1,305	1,380	1,405	1,285
ICBP	Positive	Trading	Negative	Hold	11,450	11,375	11,300	11,525	11,600	11,125
INCO	Negative	Trading	Negative	Sell	3,700	3,675	3,660	3,715	3,740	3,605
INDF	Negative	Overbought	Positive	Sell	7,100	7,050	7,000	7,150	7,200	6,900
INKP	Positive	Trading	Positive	Spec. Buy	8,275	8,225	8,125	8,375	8,425	8,000
INTP	Negative	Trading	Negative	Sell	6,850	6,800	6,750	6,900	6,950	6,650
ISAT	Positive	Trading	Positive	Spec. Buy	10,750	10,650	10,500	10,900	11,000	10,325
ITMG	Positive	Oversold	Negative	Spec. Buy	26,000	25,825	25,750	26,075	26,250	25,350
JSMR	Negative	Trading	Negative	Sell	5,075	5,025	4,975	5,125	5,175	4,900
KLBF	Positive	Trading	Negative	Hold	1,730	1,705	1,685	1,750	1,775	1,655
MAPI	Negative	Overbought	Positive	Sell	1,820	1,750	1,695	1,875	1,945	1,670
MBMA	Negative	Trading	Positive	Hold	535	525	515	545	555	505
MDKA	Negative	Trading	Negative	Sell	2,295	2,265	2,245	2,315	2,345	2,210
MEDC	Negative	Trading	Negative	Sell	1,235	1,225	1,215	1,245	1,255	1,195
MTEL	Positive	Trading	Negative	Hold	650	645	635	660	665	625
PGAS	Negative	Oversold	Negative	Spec. Buy	1,500	1,495	1,490	1,505	1,510	1,470
PGEO	Positive	Oversold	Positive	Buy	1,125	1,115	1,110	1,130	1,140	1,090
PTBA	Negative	Overbought	Negative	Strong Sell	2,800	2,775	2,760	2,815	2,840	2,715
SIDO	Negative	Trading	Positive	Hold	675	670	665	680	685	655
SMGR	Positive	Trading	Negative	Hold	3,940	3,890	3,840	3,990	4,040	3,780
TLKM	Negative	Trading	Positive	Hold	3,120	3,105	3,090	3,135	3,150	3,040
TOWR	Positive	Trading	Positive	Spec. Buy	825	795	770	850	880	755
UNTR	Positive	Trading	Negative	Hold	26,725	26,550	26,400	26,875	27,050	26,000
UNVR	Positive	Oversold	Positive	Buy	2,200	2,185	2,170	2,215	2,230	2,135

OUR TEAM

Sukarno Alatas

Head of Equity Research

sukarno@kiwoom.co.id | 021 5010 5800

Abdul Azis Setyo Wibowo

Equity Research Analyst

azis@kiwoom.co.id | 021 5010 5800

Miftahul Khaer

Equity Research Analyst

khaer.miftahul@kiwoom.co.id | 021 5010 5800

Vicky Rosalinda

Equity Research Analyst

vicky.rosalinda@kiwoom.co.id | 021 5010 5800

Wahyu Saputra

Research Associate

wahyu.saputra@kiwoom.co.id | 021 5010 5800



OTHER DISCLOSURES

All Kiwoom's research reports made available to clients are simultaneously available on our own website <http://www.kiwoom.co.id/>. Not all research content is redistributed, e-mailed or made available to third-party aggregators. For all research reports available on a particular stock, please contact your sales representative. Any data discrepancies in this report could be the result of different calculations and/or adjustments.

DISCLAIMER This report has been prepared and issued by PT Kiwoom Sekuritas Indonesia. Information has been obtained from sources believed to be reliable but Kiwoom Securities do not warrant its completeness or accuracy. Forward-looking information or statements in this report contain information that is based on forecast of future results, estimates of amounts not yet determinable, assumptions, and therefore involve known and unknown risks and uncertainties which may cause the actual results, performance or achievements of their subject matter to be materially different from current expectations.

To the fullest extent allowed by law, PT Kiwoom Sekuritas Indonesia shall not be liable for any direct, indirect or consequential losses, loss of profits, damages, costs or expenses incurred or suffered by any person or organization arising from reliance on or use of any information contained on this report. The information that we provide should not be construed in any manner whatsoever as, personalized advice.

No mention of a particular security in this report constitutes a recommendation to buy, sell or hold that or any security, or that any particular security, portfolio of securities, transaction or investment strategy is suitable for any specific person. This report is being supplied to you solely for your information and may not be reproduced by, further distributed to or published in whole or in part by, any other person.