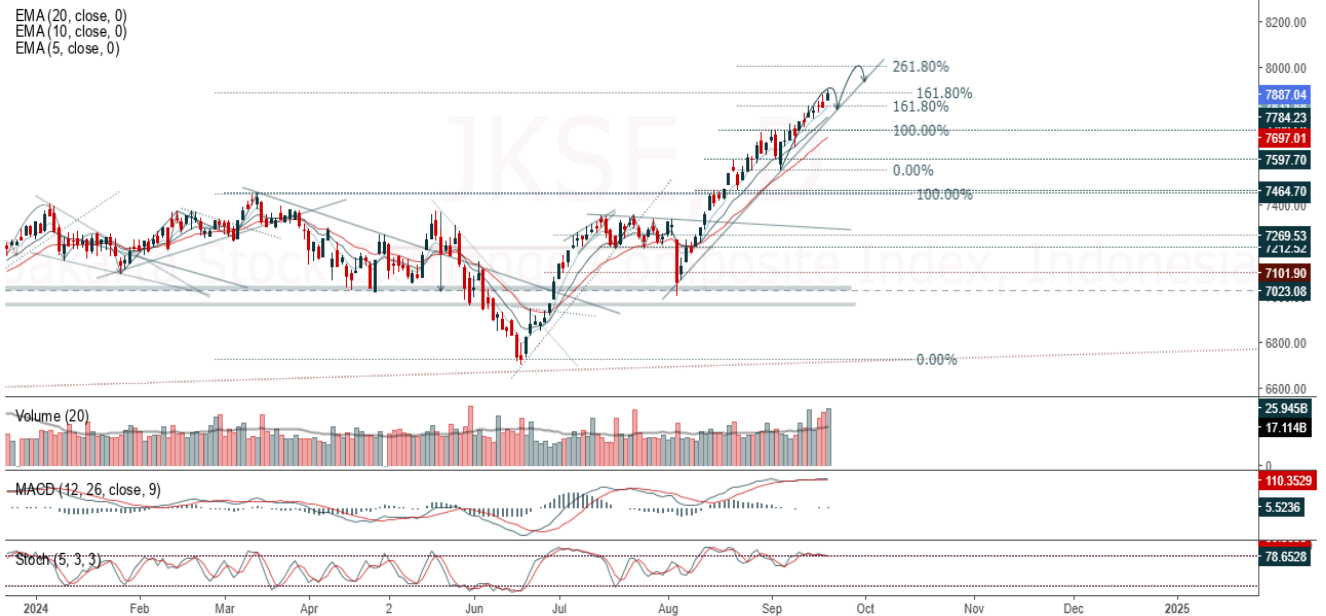


JCI Range Today 7,818 – 7,829 (Support), 7,949 – 7,960 (Resistance)

Jakarta Stock Exchange Composite Index, Indonesia, Jakarta:JKSE, D



Jakarta Composite Index closed positive and back to rally. Indicator from stochastic is back to golden cross, MACD histogram is moving positive (line is bullish) and volume is increasing. Bearish scenario: If it moves bearish, JCI is expected to weaken to the support range 7,818 – 7,829. Bullish scenario: if JCI is able to move bullish, JCI has the opportunity strengthen to the resistance range 7,949 – 7,960.

Stock Pick Today: ADMR, BBNI, BSDE, ULTI

ADMR

Adaro Minerals Indonesia Tbk PT, Indonesia, Jakarta:ADMR, D

EMA (13, close, 0)
EMA (34, close, 0)



(ADMR). Price closed higher and back to rally. Price has the opportunity strengthen to the nearest resistance. Stochastic is still bullish, MACD histogram is moving positive (line is bullish) and volume is increasing. Confirm buy if the next candle returns bullish or buy on support if it goes down first. Be careful if you fail to stay above the support level or become a support breakdown. **(Trading Buy)**

TRADING STRATEGY:

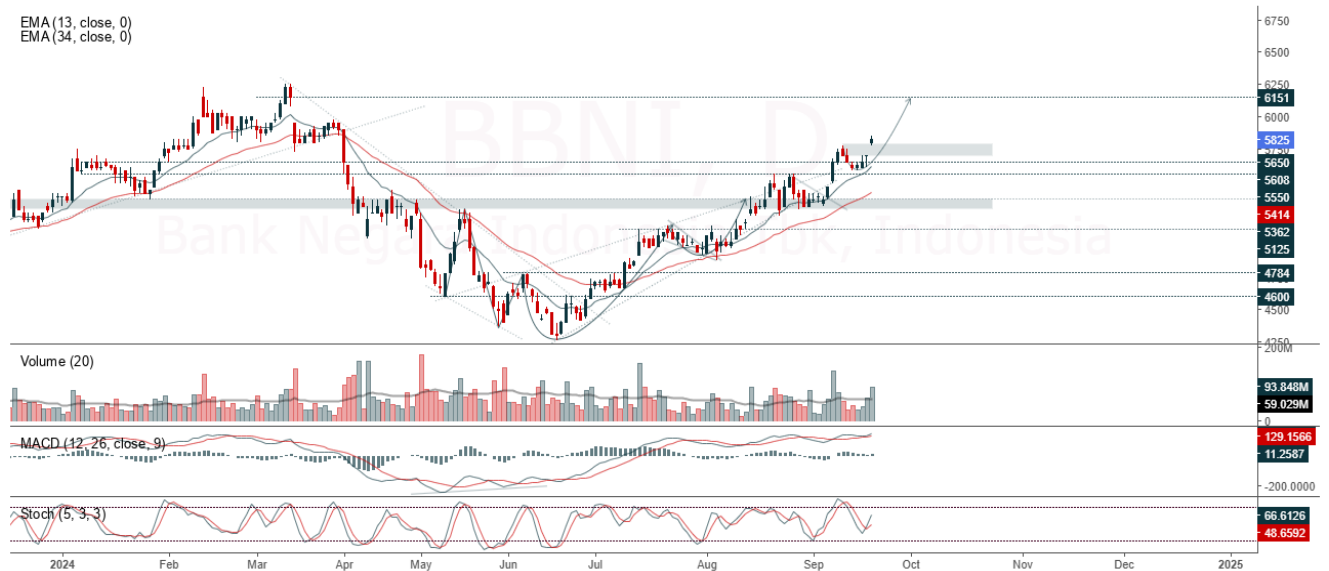
- 1. Target Price:** The price has a bullish opportunity to test the resistance level 1,385. If it breaks level 1,385 then the price will go to level 1,410. We recommend to be careful if the price fails to break through or turn around the support area.
- 2. Stop Loss:** To minimize the risk of loss, we recommend placing a stop loss at level 1,325.

Entry Buy : 1,340 – 1,360
Target Price : 1,385 – 1,410
Support : 1,330 – 1,340
Cut loss : 1,325

BBNI

Bank Negara Indonesia Tbk, Indonesia, Jakarta:BBNI, D

EMA (13, close, 0)
EMA (34, close, 0)



(BBNI). Price closed higher with bullish candle. Price has the opportunity strengthen to the nearest resistance. Stochastic is bullish, MACD histogram is moving positive (line is bullish) and volume is increasing. Confirm buy if the next candle returns bullish or buy on support if it goes down first. Be careful if you fail to stay above the support level or become a support breakdown. **(Trading Buy)**

TRADING STRATEGY:

1. **Target Price:** The price has a bullish opportunity to test the resistance level 5,950. If it breaks level 5,950 then the price will go to level 6,050. We recommend to be careful if the price fails to break through or turn around the support area.

2. **Stop Loss:** To minimize the risk of loss, we recommend placing a stop loss at level 5,675.

Entry Buy : 5,725 – 5,825
Target Price : 5,950 – 6,050
Support : 5,700 – 5,725
Cut loss : 5,675

BSDE

Bumi Serpong Damai Tbk, Indonesia, Jakarta:BSDE, D

EMA(13; close, 0)
EMA(34; close, 0)



(BSDE). Price closed back to rally. Price has the opportunity strengthen to the nearest resistance. Stochastic is bullish, MACD histogram is moving positive direction (line is golden cross potential) and volume is increasing. Confirm buy if the next candle returns bullish or buy on support if it goes down first. Be careful if you fail to stay above the support level or become a support breakdown. **(Trading Buy)**

TRADING STRATEGY:

1. **Target Price:** The price has a bullish opportunity to test the resistance level 1,285. If it breaks level 1,285 then the price will go to level 1,305. We recommend to be careful if the price fails to break through or turn around the support area.

2. **Stop Loss:** To minimize the risk of loss, we recommend placing a stop loss at level 1,225.

Entry Buy : 1,235 – 1,260
 Target Price : 1,285 – 1,305
 Support : 1,230 – 1,235
 Cut loss : 1,225

ULTJ

Ultra Jaya Milk Industry Tbk, Indonesia, Jakarta:ULTJ, D

EMA (34, close, 0)
EMA (13, close, 0)



(ULTJ). Price closed higher and breakout resistance. Price has the opportunity strengthen to the next resistance. Stochastic is golden cross, MACD histogram is moving positive (line is bullish) and volume is increasing. Confirm buy if the next candle returns bullish or buy on support if it goes down first. Be careful if you fail to stay above the support level or become a support breakdown. **(Trading Buy)**

TRADING STRATEGY:

1. **Target Price:** The price has a bullish opportunity to test the resistance level 1,915. If it breaks level 1,915 then the price will go to level 1,945. We recommend to be careful if the price fails to break through or turn around the support area.

2. **Stop Loss:** To minimize the risk of loss, we recommend placing a stop loss at level 1,830.

Entry Buy : 1,850 – 1,880
Target Price : 1,915 – 1,945
Support : 1,835 – 1,850
Cut loss : 1,830

Forecast – Technical Analysis

Ticker	MA5	RSI Rec	MACD Trend	Recomm.	Pivot Point	Support		Resistance		Stop Loss Level
						1	2	1	2	
JCI	Negative	Overbought	Positive	Sell	7,875	7,850	7,825	7,900	7,950	7,700
ACES	Negative	Overbought	Positive	Sell	810	800	775	835	845	765
ADRO	Negative	Trading	Positive	Hold	3,650	3,600	3,530	3,720	3,770	3,475
AKRA	Negative	Trading	Positive	Hold	1,470	1,460	1,455	1,475	1,485	1,430
AMMN	Negative	Trading	Negative	Sell	10,400	10,275	10,175	10,500	10,625	10,025
AMRT	Negative	Overbought	Positive	Sell	3,120	3,090	3,070	3,140	3,170	3,025
ANTM	Negative	Trading	Negative	Sell	1,370	1,360	1,350	1,380	1,390	1,330
ARTO	Negative	Overbought	Positive	Sell	3,130	3,090	3,060	3,160	3,200	3,015
ASII	Negative	Overbought	Negative	Strong Sell	5,250	5,250	5,175	5,325	5,325	5,100
BBCA	Negative	Overbought	Positive	Sell	10,800	10,675	10,550	10,925	11,050	10,375
BBNI	Negative	Overbought	Positive	Sell	5,800	5,775	5,700	5,875	5,900	5,625
BBRI	Negative	Overbought	Positive	Sell	5,425	5,375	5,325	5,475	5,525	5,250
BBTN	Negative	Overbought	Positive	Sell	1,520	1,490	1,465	1,545	1,575	1,440
BMRI	Positive	Overbought	Positive	Hold	7,450	7,350	7,300	7,500	7,600	7,200
BRIS	Negative	Overbought	Positive	Sell	3,170	3,135	3,100	3,205	3,240	3,050
BRPT	Positive	Trading	Positive	Spec. Buy	1,170	1,140	1,110	1,200	1,230	1,090
BUKA	Negative	Trading	Positive	Hold	115	114	112	117	118	110
CPIN	Negative	Trading	Positive	Hold	4,995	4,940	4,885	5,050	5,100	4,810
ESSA	Positive	Trading	Negative	Hold	810	800	790	820	830	775
EXCL	Negative	Trading	Positive	Hold	2,295	2,270	2,245	2,320	2,345	2,210
GGRM	Positive	Trading	Positive	Spec. Buy	15,950	15,900	15,825	16,025	16,075	15,600
GOTO	Negative	Overbought	Positive	Sell	61	60	56	65	66	55
HRUM	Negative	Trading	Negative	Sell	1,350	1,335	1,320	1,365	1,380	1,300
ICBP	Positive	Trading	Negative	Hold	11,625	11,450	11,275	11,800	11,975	11,100
INCO	Negative	Trading	Positive	Hold	3,690	3,660	3,640	3,710	3,740	3,585
INDF	Negative	Overbought	Positive	Sell	7,100	7,050	7,025	7,125	7,175	6,925
INKP	Positive	Trading	Positive	Spec. Buy	8,325	8,250	8,200	8,375	8,450	8,075
INTP	Negative	Oversold	Negative	Spec. Buy	6,825	6,775	6,750	6,850	6,900	6,650
ISAT	Positive	Trading	Positive	Spec. Buy	10,675	10,625	10,500	10,800	10,850	10,350
ITMG	Negative	Trading	Negative	Sell	26,000	25,850	25,775	26,075	26,225	25,375
JSMR	Negative	Trading	Negative	Sell	5,075	5,025	4,930	5,175	5,225	4,855
KLBF	Negative	Trading	Negative	Sell	1,745	1,730	1,705	1,770	1,785	1,680
MAPI	Negative	Overbought	Positive	Sell	1,795	1,765	1,740	1,820	1,850	1,715
MBMA	Negative	Oversold	Positive	Spec. Buy	530	525	520	535	540	510
MDKA	Negative	Trading	Negative	Sell	2,290	2,265	2,240	2,315	2,340	2,205
MEDC	Negative	Trading	Negative	Sell	1,245	1,225	1,210	1,260	1,280	1,190
MTEL	Positive	Trading	Negative	Hold	655	650	645	660	665	635
PGAS	Negative	Oversold	Negative	Spec. Buy	1,485	1,475	1,455	1,505	1,515	1,435
PGEO	Positive	Oversold	Positive	Buy	1,125	1,120	1,115	1,130	1,135	1,095
PTBA	Negative	Trading	Negative	Sell	2,780	2,760	2,740	2,800	2,820	2,700
SIDO	Positive	Trading	Positive	Spec. Buy	675	670	660	685	690	650
SMGR	Positive	Trading	Negative	Hold	3,905	3,880	3,855	3,930	3,955	3,795
TLKM	Negative	Overbought	Positive	Sell	3,140	3,125	3,110	3,155	3,170	3,060
TOWR	Positive	Trading	Negative	Hold	830	805	780	855	880	770
UNTR	Negative	Trading	Negative	Sell	26,725	26,550	26,450	26,825	27,000	26,050
UNVR	Negative	Oversold	Positive	Spec. Buy	2,230	2,155	2,130	2,255	2,330	2,095

OUR TEAM

Sukarno Alatas

Head of Equity Research

sukarno@kiwoom.co.id | 021 5010 5800**Abdul Azis Setyo Wibowo**

Equity Research Analyst

azis@kiwoom.co.id | 021 5010 5800**Miftahul Khaer**

Equity Research Analyst

khaer.miftahul@kiwoom.co.id | 021 5010 5800**Vicky Rosalinda**

Equity Research Analyst

vicky.rosalinda@kiwoom.co.id | 021 5010 5800**Wahyu Saputra**

Research Associate

wahyu.saputra@kiwoom.co.id | 021 5010 5800**OTHER DISCLOSURES**

All Kiwoom's research reports made available to clients are simultaneously available on our own website <http://www.kiwoom.co.id/>. Not all research content is redistributed, e-mailed or made available to third-party aggregators. For all research reports available on a particular stock, please contact your sales representative. Any data discrepancies in this report could be the result of different calculations and/or adjustments.

DISCLAIMER This report has been prepared and issued by PT Kiwoom Sekuritas Indonesia. Information has been obtained from sources believed to be reliable but Kiwoom Securities do not warrant its completeness or accuracy. Forward-looking information or statements in this report contain information that is based on forecast of future results, estimates of amounts not yet determinable, assumptions, and therefore involve known and unknown risks and uncertainties which may cause the actual results, performance or achievements of their subject matter to be materially different from current expectations.

To the fullest extent allowed by law, PT Kiwoom Sekuritas Indonesia shall not be liable for any direct, indirect or consequential losses, loss of profits, damages, costs or expenses incurred or suffered by any person or organization arising from reliance on or use of any information contained on this report. The information that we provide should not be construed in any manner whatsoever as, personalized advice.

No mention of a particular security in this report constitutes a recommendation to buy, sell or hold that or any security, or that any particular security, portfolio of securities, transaction or investment strategy is suitable for any specific person. This report is being supplied to you solely for your information and may not be reproduced by, further distributed to or published in whole or in part by, any other person.