

JCI Range Today 7,633 – 7,650 (Support), 7,744 – 7,761 (Resistance)

Jakarta Stock Exchange Composite Index, Indonesia, Jakarta:JKSE, D



Jakarta Composite Index closed negative with bearish candle. Indicator from stochastic is death cross, MACD histogram is moving negative (line is bearish) and volume is decreasing. Bearish scenario: If it moves bearish again, JCI is expected to weaken again to the support range 7,633 – 7,650. Bullish scenario: If JCI is able to move bullish, JCI has the opportunity strengthen to the resistance range 7,744 – 7,761.

Stock Pick Today: ANTM, CMRY, MYOR, PTBA

ANTM

Aneka Tambang Persero Tbk, Indonesia, Jakarta:ANTM, D



(ANTM). Price closed higher and breakout harmonic resistance (FR 61.80%). Price has the opportunity strengthen to the next resistance. Stochastic is death cross, MACD histogram is moving positive (line is bullish) and volume is increasing. Confirm buy if the next candle returns bullish or buy on support if it goes down first. Be careful if you fail to stay above the support level or become a support breakdown.
(Trading Buy)

TRADING STRATEGY:

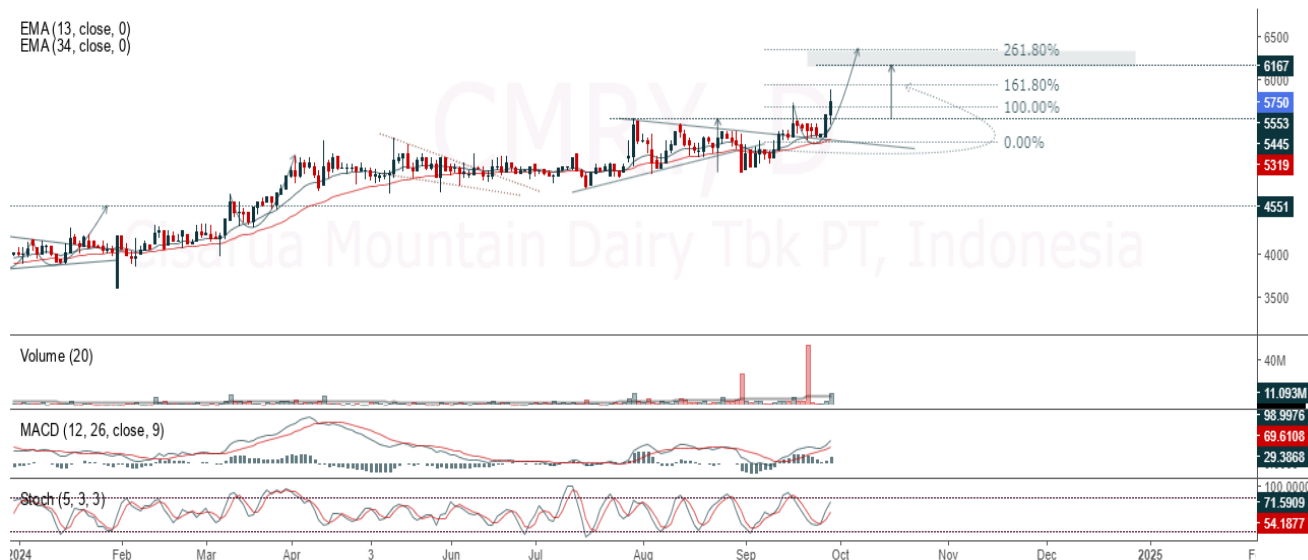
1. Target Price: The price has a bullish opportunity to test the resistance level 1,500. If it breaks level 1,500 then the price will go to level 1,525. We recommend to be careful if the price fails to break through or turn around the support area.
2. Stop Loss: To minimize the risk of loss, we recommend placing a stop loss at level 1,425.

Entry Buy : 1,445 – 1,470
 Target Price : 1,500 – 1,525
 Support : 1,430 – 1,445
 Cut loss : 1,425

CMRY

Cisarua Mountain Dairy Tbk PT, Indonesia, Jakarta:CMRY, D

EMA (13, close, 0)
EMA (34, close, 0)



(CMRY). Price closed higher and breakout harmonic resistance (FR 100.00%). Price has the opportunity strengthen to the next resistance. Stochastic is still bullish, MACD histogram is moving positive (line is bullish) and volume is increasing. Confirm buy if the next candle returns bullish or buy on support if it goes down first. Be careful if you fail to stay above the support level or become a support breakdown.

(Trading Buy)

TRADING STRATEGY:

1. **Target Price:** The price has a bullish opportunity to test the resistance level 5,875. If it breaks level 5,875 then the price will go to level 5,975. We recommend to be careful if the price fails to break through or turn around the support area.

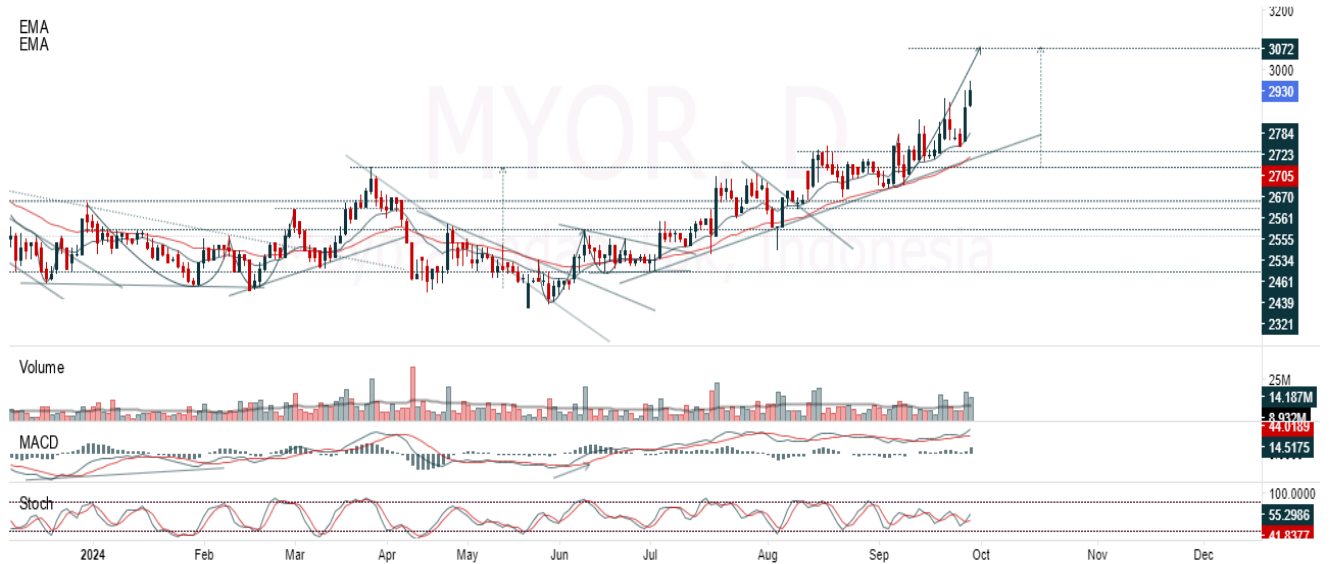
2. **Stop Loss:** To minimize the risk of loss, we recommend placing a stop loss at level 5,575.

- Entry Buy : 5,650 – 5,750
- Target Price : 5,875 – 5,975
- Support : 5,600 – 5,650
- Cut loss : 5,575

MYOR

Mayora Indah Tbk, Indonesia, Jakarta:MYOR, D

EMA
EMA



(MYOR). Price closed back to rally. Price has the opportunity strengthen to the nearest resistance. Stochastic is golden cross, MACD histogram is moving positive (line is bullish) and volume is decreasing. Confirm buy if the next candle returns bullish or buy on support if it goes down first. Be careful if you fail to stay above the support level or become a support breakdown. **(Trading Buy)**

TRADING STRATEGY:

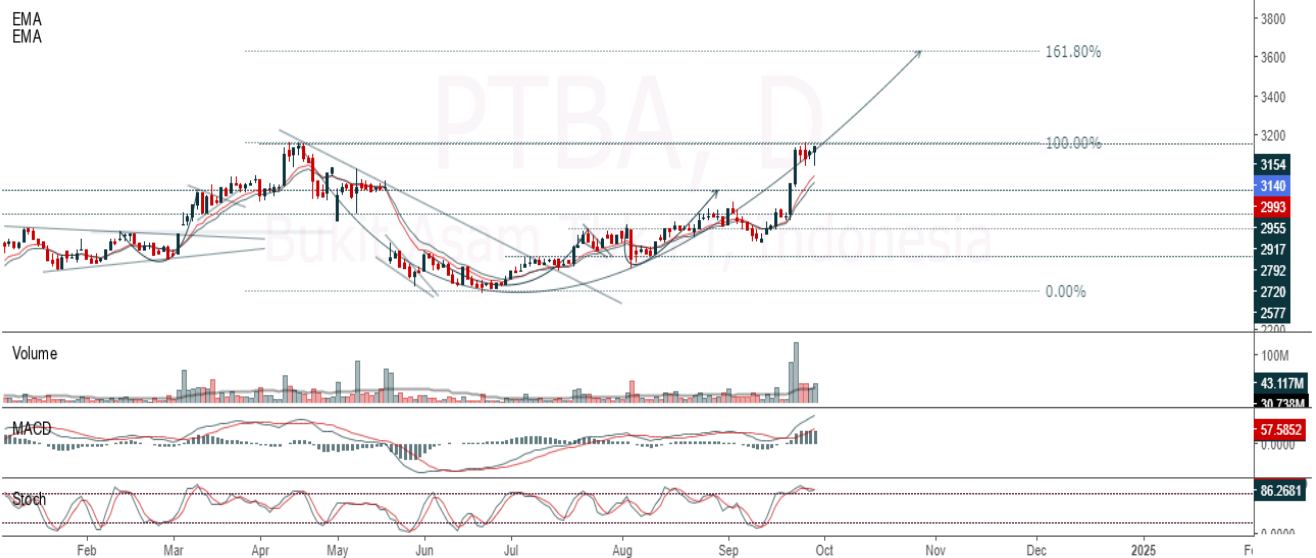
1. Target Price: The price has a bullish opportunity to test the resistance level 2,990. If it breaks level 2,990 then the price will go to level 3,040. We recommend to be careful if the price fails to break through or turn around the support area.

2. Stop Loss: To minimize the risk of loss, we recommend placing a stop loss at level 2,840.

Entry Buy : 2,880 – 2,930
Target Price : 2,990 – 3,040
Support : 2,850 – 2,880
Cut loss : 2,840

PTBA

Bukit Asam Tbk PT, Indonesia, Jakarta:PTBA, D



(PTBA). Price closed back to rally. Price has the opportunity strengthen to the nearest resistance. Stochastic is golden cross potential, MACD histogram is moving positive (line is bullish) and volume is increasing. Confirm buy if the next candle returns bullish or buy on support if it goes down first. Be careful if you fail to stay above the support level or become a support breakdown. **(Trading Buy)**

TRADING STRATEGY:

1. **Target Price:** The price has a bullish opportunity to test the resistance level 3,200. If it breaks level 3,200 then the price will go to level 3,250. We recommend to be careful if the price fails to break through or turn around the support area.

2. **Stop Loss:** To minimize the risk of loss, we recommend placing a stop loss at level 3,050.

Entry Buy : 3,080 – 3,140
 Target Price : 3,200 – 3,250
 Support : 3,060 – 3,080
 Cut loss : 3,050

Forecast – Technical Analysis

Ticker	MA5	RSI Rec	MACD Trend	Recomm.	Pivot Point	Support		Resistance		Stop Loss Level
						1	2	1	2	
JCI	Positive	Trading	Negative	Hold	7,700	7,675	7,625	7,750	7,775	7,525
ACES	Negative	Overbought	Positive	Sell	910	900	890	920	930	875
ADRO	Negative	Overbought	Positive	Sell	3,845	3,745	3,645	3,945	4,045	3,590
AKRA	Negative	Overbought	Positive	Sell	1,540	1,525	1,505	1,560	1,575	1,485
AMMN	Positive	Oversold	Negative	Spec. Buy	9,775	9,450	9,025	10,200	10,525	8,875
AMRT	Negative	Overbought	Positive	Sell	3,205	3,155	3,095	3,265	3,315	3,045
ANTM	Negative	Overbought	Positive	Sell	1,450	1,425	1,395	1,480	1,505	1,375
ARTO	Negative	Overbought	Positive	Sell	3,135	3,105	3,035	3,205	3,235	2,985
ASII	Positive	Trading	Negative	Hold	5,175	5,075	4,950	5,300	5,400	4,875
BBCA	Positive	Trading	Positive	Spec. Buy	10,575	10,400	10,225	10,750	10,925	10,075
BBNI	Positive	Trading	Negative	Hold	5,525	5,425	5,325	5,625	5,725	5,225
BBRI	Positive	Trading	Negative	Hold	5,075	5,000	4,925	5,150	5,225	4,850
BBTN	Positive	Trading	Negative	Hold	1,455	1,450	1,425	1,480	1,485	1,405
BMRI	Positive	Trading	Negative	Hold	7,050	6,975	6,925	7,100	7,175	6,825
BRIS	Negative	Overbought	Positive	Sell	3,080	3,040	3,010	3,110	3,150	2,965
BRPT	Negative	Trading	Negative	Sell	1,100	1,090	1,080	1,110	1,120	1,065
BUKA	Negative	Overbought	Positive	Sell	122	119	116	125	128	114
CPIN	Positive	Oversold	Positive	Buy	4,845	4,795	4,745	4,895	4,945	4,670
ESSA	Negative	Trading	Positive	Hold	875	855	835	895	915	820
EXCL	Negative	Trading	Positive	Hold	2,335	2,300	2,275	2,360	2,395	2,240
GGRM	Negative	Trading	Positive	Hold	16,150	16,050	15,825	16,375	16,475	15,600
GOTO	Negative	Overbought	Positive	Sell	69	67	63	73	75	62
HRUM	Negative	Trading	Positive	Hold	1,405	1,370	1,350	1,425	1,460	1,330
ICBP	Negative	Overbought	Positive	Sell	12,675	12,575	12,350	12,900	13,000	12,175
INCO	Negative	Overbought	Positive	Sell	4,040	3,995	3,950	4,085	4,130	3,890
INDF	Negative	Overbought	Negative	Strong Sell	7,225	7,175	7,150	7,250	7,300	7,025
INKP	Negative	Trading	Positive	Hold	8,500	8,425	8,300	8,625	8,700	8,175
INTP	Positive	Trading	Positive	Spec. Buy	6,875	6,825	6,750	6,950	7,000	6,650
ISAT	Negative	Overbought	Positive	Sell	11,250	11,175	10,975	11,450	11,525	10,825
ITMG	Negative	Trading	Negative	Sell	26,350	26,150	25,650	26,850	27,050	25,275
JSMR	Negative	Oversold	Negative	Spec. Buy	4,945	4,895	4,815	5,025	5,075	4,740
KLBF	Negative	Trading	Negative	Sell	1,740	1,730	1,710	1,760	1,770	1,685
MAPI	Positive	Overbought	Positive	Hold	1,815	1,775	1,745	1,845	1,885	1,715
MBMA	Negative	Overbought	Positive	Sell	580	570	555	595	605	545
MDKA	Negative	Overbought	Positive	Sell	2,670	2,590	2,530	2,730	2,810	2,490
MEDC	Negative	Trading	Positive	Hold	1,300	1,290	1,275	1,315	1,325	1,255
MTEL	Positive	Oversold	Negative	Spec. Buy	650	640	635	655	665	625
PGAS	Positive	Oversold	Negative	Spec. Buy	1,475	1,465	1,455	1,485	1,495	1,435
PGEO	Negative	Trading	Positive	Hold	1,145	1,130	1,115	1,160	1,175	1,100
PTBA	Negative	Overbought	Positive	Sell	3,110	3,075	3,010	3,175	3,210	2,960
SIDO	Positive	Trading	Positive	Spec. Buy	670	665	655	680	685	645
SMGR	Positive	Trading	Negative	Hold	3,890	3,845	3,810	3,925	3,970	3,750
TLKM	Positive	Trading	Negative	Hold	3,085	3,025	2,955	3,155	3,215	2,910
TOWR	Negative	Trading	Negative	Sell	855	850	840	865	870	825
UNTR	Negative	Overbought	Positive	Sell	27,525	27,300	27,025	27,800	28,025	26,600
UNVR	Negative	Trading	Positive	Hold	2,300	2,255	2,230	2,325	2,370	2,195

OUR TEAM

Sukarno Alatas

Head of Equity Research

sukarno@kiwoom.co.id | 021 5010 5800

Abdul Azis Setyo Wibowo

Equity Research Analyst

azis@kiwoom.co.id | 021 5010 5800

Miftahul Khaer

Equity Research Analyst

khaer.miftahul@kiwoom.co.id | 021 5010 5800

Vicky Rosalinda

Equity Research Analyst

vicky.rosalinda@kiwoom.co.id | 021 5010 5800

Wahyu Saputra

Research Associate

wahyu.saputra@kiwoom.co.id | 021 5010 5800



OTHER DISCLOSURES

All Kiwoom's research reports made available to clients are simultaneously available on our own website <http://www.kiwoom.co.id/>. Not all research content is redistributed, e-mailed or made available to third-party aggregators. For all research reports available on a particular stock, please contact your sales representative. Any data discrepancies in this report could be the result of different calculations and/or adjustments.

DISCLAIMER This report has been prepared and issued by PT Kiwoom Sekuritas Indonesia. Information has been obtained from sources believed to be reliable but Kiwoom Securities do not warrant its completeness or accuracy. Forward-looking information or statements in this report contain information that is based on forecast of future results, estimates of amounts not yet determinable, assumptions, and therefore involve known and unknown risks and uncertainties which may cause the actual results, performance or achievements of their subject matter to be materially different from current expectations.

To the fullest extent allowed by law, PT Kiwoom Sekuritas Indonesia shall not be liable for any direct, indirect or consequential losses, loss of profits, damages, costs or expenses incurred or suffered by any person or organization arising from reliance on or use of any information contained on this report. The information that we provide should not be construed in any manner whatsoever as, personalized advice.

No mention of a particular security in this report constitutes a recommendation to buy, sell or hold that or any security, or that any particular security, portfolio of securities, transaction or investment strategy is suitable for any specific person. This report is being supplied to you solely for your information and may not be reproduced by, further distributed to or published in whole or in part by, any other person.