

**JCI Range Today 7,554 – 7,581 (Support), 7,696 – 7,721 (Resistance)**

Jakarta Stock Exchange Composite Index, Indonesia, Jakarta:JKSE, D



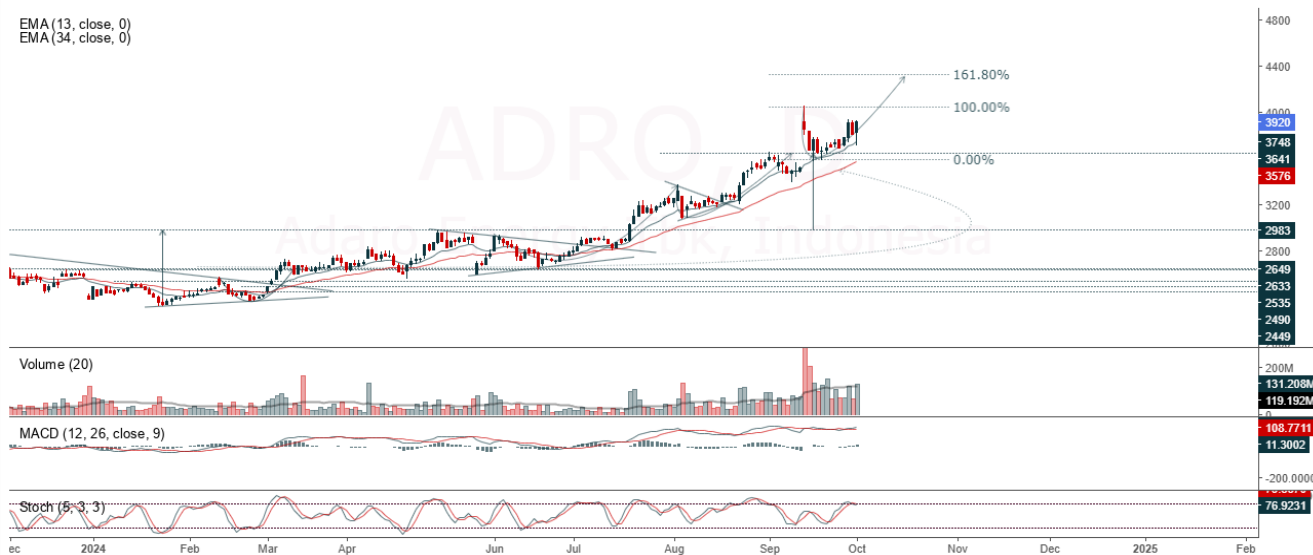
**Jakarta Composite Index** closed higher and breakout resistance. Indicator from stochastic is golden cross potential, MACD histogram is moving bearish (line is sloping) and volume is decreasing. Bearish scenario: If it moves bearish, JCI is expected to weaken to the support range 7,554 – 7,581. Bullish scenario: If JCI is able to move bullish, JCI has the opportunity strengthen to the resistance range 7,696 – 7,721.

**Stock Pick Today: ADRO, LSIP, SRTG, TINS**

## ADRO

Adaro Energy Tbk, Indonesia, Jakarta:ADRO, D

EMA (13, close, 0)  
EMA (34, close, 0)



**(ADRO).** Price closed higher and back to rally. Price has the opportunity strengthen to the nearest resistance. Stochastic is bearish, MACD histogram is moving positive (line is bullish) and volume is increasing. Confirm buy if the next candle returns bullish or buy on support if it goes down first. Be careful if you fail to stay above the support level or become a support breakdown. **(Trading Buy)**

### TRADING STRATEGY:

1. **Target Price:** The price has a bullish opportunity to test the resistance level 3,990. If it breaks level 3,990 then the price will go to level 4,050. We recommend to be careful if the price fails to break through or turn around the support area.
2. **Stop Loss:** To minimize the risk of loss, we recommend placing a stop loss at level 3,820.

Entry Buy : 3,850 – 3,920  
Target Price : 3,990 – 4,050  
Support : 3,830 – 3,850  
Cut loss : 3,820

**LSIP**

Perusahaan Perkebunan London Sumatra Indonesia Tbk PT, Indonesia, Jakarta:LSIP, D

EMA (13, close, 0)  
EMA (34, close, 0)



**(LSIP).** Price closed higher with swing low. Price has the opportunity strengthen to the nearest resistance. Stochastic is golden cross potential, MACD histogram is moving positive direction (line is golden cross potential) and volume is increasing. Confirm buy if the next candle returns bullish or buy on support if it goes down first. Be careful if you fail to stay above the support level or become a support breakdown. **(Trading Buy)**

**TRADING STRATEGY:**

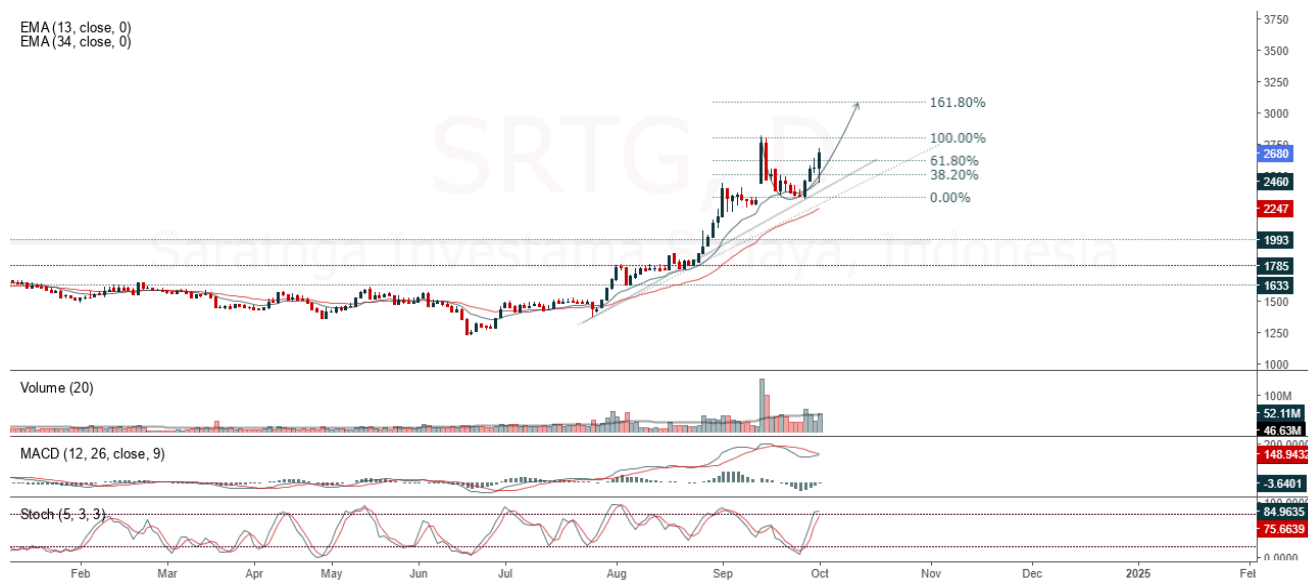
1. **Target Price:** The price has a bullish opportunity to test the resistance level 1,045. If it breaks level 1,045 then the price will go to level 1,065. We recommend to be careful if the price fails to break through or turn around the support area.
2. **Stop Loss:** To minimize the risk of loss, we recommend placing a stop loss at level 995.

Entry Buy : 1,005 – 1,025  
Target Price : 1,045 – 1,065  
Support : 1,000 – 1,005  
Cut loss : 995

**SRTG**

Saratoga Investama Sedaya, Indonesia, Jakarta:SRTG, D

EMA (13, close, 0)  
EMA (34, close, 0)



**(SRTG).** Price closed higher and breakout harmonic resistance (FR 61.80%). Price has the opportunity strengthen to the next resistance. Stochastic is still bullish, MACD histogram is moving positive direction (line is golden cross potential) and volume is increasing. Confirm buy if the next candle returns bullish or buy on support if it goes down first. Be careful if you fail to stay above the support level or become a support breakdown. **(Trading Buy)**

**TRADING STRATEGY:**

1. Target Price: The price has a bullish opportunity to test the resistance level 2,730. If it breaks level 2,730 then the price will go to level 2,780. We recommend to be careful if the price fails to break through or turn around the support area.
2. Stop Loss: To minimize the risk of loss, we recommend placing a stop loss at level 2,600.

Entry Buy : 2,630 – 2,680  
Target Price : 2,730 – 2,780  
Support : 2,610 – 2,630  
Cut loss : 2,600

**TINS**

Timah Persero Tbk, Indonesia, Jakarta:TINS, D

EMA (13, close, 0)  
EMA (34, close, 0)



**(TINS).** Price closed positive and still uptrend condition. Price has the opportunity strengthen to the nearest resistance. Stochastic is golden cross potential, MACD histogram is moving positive (line is bullish) and volume is increasing. Confirm buy if the next candle returns bullish or buy on support if it goes down first. Be careful if you fail to stay above the support level or become a support breakdown.  
**(Trading Buy)**

**TRADING STRATEGY:**

1. **Target Price:** The price has a bullish opportunity to test the resistance level 1,205. If it breaks level 1,205 then the price will go to level 1,225. We recommend to be careful if the price fails to break through or turn around the support area.

2. **Stop Loss:** To minimize the risk of loss, we recommend placing a stop loss at level 1,150.

Entry Buy : 1,160 – 1,180  
Target Price : 1,205 – 1,225  
Support : 1,155 – 1,160  
Cut loss : 1,150

**Forecast – Technical Analysis**

Ticker	MA5	RSI Rec	MACD Trend	Recomm.	Pivot Point	Support		Resistance		Stop Loss Level
						1	2	1	2	
JCI	Positive	Trading	Negative	Hold	7,600	7,550	7,500	7,650	7,700	7,400
ACES	Negative	Overbought	Positive	Sell	910	890	875	925	945	860
ADRO	Negative	Overbought	Positive	Sell	3,850	3,765	3,630	3,985	4,070	3,575
AKRA	Positive	Overbought	Positive	Hold	1,550	1,540	1,525	1,565	1,575	1,500
AMMN	Positive	Oversold	Negative	Spec. Buy	9,300	9,150	8,975	9,475	9,625	8,850
AMRT	Positive	Trading	Positive	Spec. Buy	3,185	3,160	3,115	3,230	3,255	3,070
ANTM	Negative	Overbought	Positive	Sell	1,495	1,480	1,465	1,510	1,525	1,445
ARTO	Positive	Trading	Positive	Spec. Buy	3,030	2,965	2,870	3,125	3,190	2,825
ASII	Positive	Trading	Negative	Hold	5,125	5,100	5,025	5,200	5,225	4,955
BBCA	Positive	Trading	Negative	Hold	10,475	10,400	10,300	10,575	10,650	10,150
BBNI	Positive	Trading	Negative	Hold	5,400	5,325	5,300	5,425	5,500	5,200
BBRI	Positive	Trading	Negative	Hold	5,025	4,970	4,920	5,075	5,125	4,845
BBTN	Positive	Trading	Negative	Hold	1,455	1,440	1,420	1,475	1,490	1,400
BMRI	Positive	Oversold	Negative	Spec. Buy	7,025	6,975	6,900	7,100	7,150	6,800
BRIS	Positive	Trading	Positive	Spec. Buy	3,015	2,960	2,925	3,050	3,105	2,880
BRPT	Positive	Trading	Negative	Hold	1,065	1,055	1,045	1,075	1,085	1,030
BUKA	Negative	Trading	Positive	Hold	120	118	116	122	124	114
CPIN	Positive	Oversold	Negative	Spec. Buy	4,720	4,695	4,680	4,735	4,760	4,605
ESSA	Negative	Overbought	Positive	Sell	925	875	820	980	1,030	810
EXCL	Negative	Trading	Negative	Sell	2,275	2,240	2,195	2,320	2,355	2,160
GGRM	Positive	Trading	Positive	Spec. Buy	16,000	15,800	15,600	16,200	16,400	15,375
GOTO	Negative	Overbought	Positive	Sell	67	66	65	68	69	64
HRUM	Positive	Trading	Positive	Spec. Buy	1,405	1,380	1,360	1,425	1,450	1,340
ICBP	Negative	Overbought	Positive	Sell	12,375	12,150	11,900	12,625	12,850	11,700
INCO	Negative	Overbought	Positive	Sell	4,165	4,100	4,025	4,240	4,305	3,965
INDF	Positive	Trading	Negative	Hold	7,125	7,050	7,000	7,175	7,250	6,875
INKP	Negative	Overbought	Positive	Sell	8,775	8,675	8,550	8,900	9,000	8,425
INTP	Negative	Trading	Positive	Hold	6,850	6,800	6,750	6,900	6,950	6,650
ISAT	Negative	Trading	Positive	Hold	10,950	10,800	10,675	11,075	11,225	10,500
ITMG	Positive	Trading	Positive	Spec. Buy	26,325	26,200	25,900	26,625	26,750	25,500
JSMR	Positive	Oversold	Positive	Buy	4,930	4,895	4,860	4,965	5,000	4,785
KLBF	Positive	Trading	Negative	Hold	1,735	1,715	1,700	1,750	1,770	1,670
MAPI	Positive	Trading	Positive	Spec. Buy	1,735	1,710	1,650	1,795	1,820	1,625
MBMA	Negative	Overbought	Positive	Sell	600	585	570	615	630	560
MDKA	Negative	Overbought	Positive	Sell	2,655	2,605	2,545	2,715	2,765	2,505
MEDC	Positive	Trading	Positive	Spec. Buy	1,280	1,265	1,255	1,290	1,305	1,235
MTEL	Positive	Oversold	Negative	Spec. Buy	635	625	615	645	655	605
PGAS	Positive	Oversold	Negative	Spec. Buy	1,445	1,435	1,425	1,455	1,465	1,405
PGEO	Positive	Trading	Positive	Spec. Buy	1,130	1,125	1,115	1,140	1,145	1,095
PTBA	Positive	Overbought	Positive	Hold	3,065	3,010	2,935	3,140	3,195	2,890
SIDO	Positive	Trading	Positive	Spec. Buy	675	665	660	680	690	650
SMGR	Negative	Oversold	Negative	Spec. Buy	3,830	3,760	3,700	3,890	3,960	3,645
TLKM	Positive	Trading	Negative	Hold	3,010	2,980	2,960	3,030	3,060	2,915
TOWR	Negative	Trading	Negative	Sell	860	855	840	875	880	830
UNTR	Negative	Trading	Negative	Sell	27,300	27,175	26,850	27,625	27,750	26,450
UNVR	Positive	Trading	Positive	Spec. Buy	2,220	2,195	2,170	2,245	2,270	2,135

## OUR TEAM

**Sukarno Alatas**

Head of Equity Research

[sukarno@kiwoom.co.id](mailto:sukarno@kiwoom.co.id) | 021 5010 5800**Abdul Azis Setyo Wibowo**

Equity Research Analyst

[azis@kiwoom.co.id](mailto:azis@kiwoom.co.id) | 021 5010 5800**Miftahul Khaer**

Equity Research Analyst

[khaer.miftahul@kiwoom.co.id](mailto:khaer.miftahul@kiwoom.co.id) | 021 5010 5800**Vicky Rosalinda**

Equity Research Analyst

[vicky.rosalinda@kiwoom.co.id](mailto:vicky.rosalinda@kiwoom.co.id) | 021 5010 5800**Wahyu Saputra**

Research Associate

[wahyu.saputra@kiwoom.co.id](mailto:wahyu.saputra@kiwoom.co.id) | 021 5010 5800**OTHER DISCLOSURES**

All Kiwoom's research reports made available to clients are simultaneously available on our own website <http://www.kiwoom.co.id/>. Not all research content is redistributed, e-mailed or made available to third-party aggregators. For all research reports available on a particular stock, please contact your sales representative. Any data discrepancies in this report could be the result of different calculations and/or adjustments.

**DISCLAIMER** This report has been prepared and issued by PT Kiwoom Sekuritas Indonesia. Information has been obtained from sources believed to be reliable but Kiwoom Securities do not warrant its completeness or accuracy. Forward-looking information or statements in this report contain information that is based on forecast of future results, estimates of amounts not yet determinable, assumptions, and therefore involve known and unknown risks and uncertainties which may cause the actual results, performance or achievements of their subject matter to be materially different from current expectations.

To the fullest extent allowed by law, PT Kiwoom Sekuritas Indonesia shall not be liable for any direct, indirect or consequential losses, loss of profits, damages, costs or expenses incurred or suffered by any person or organization arising from reliance on or use of any information contained on this report. The information that we provide should not be construed in any manner whatsoever as, personalized advice.

No mention of a particular security in this report constitutes a recommendation to buy, sell or hold that or any security, or that any particular security, portfolio of securities, transaction or investment strategy is suitable for any specific person. This report is being supplied to you solely for your information and may not be reproduced by, further distributed to or published in whole or in part by, any other person.