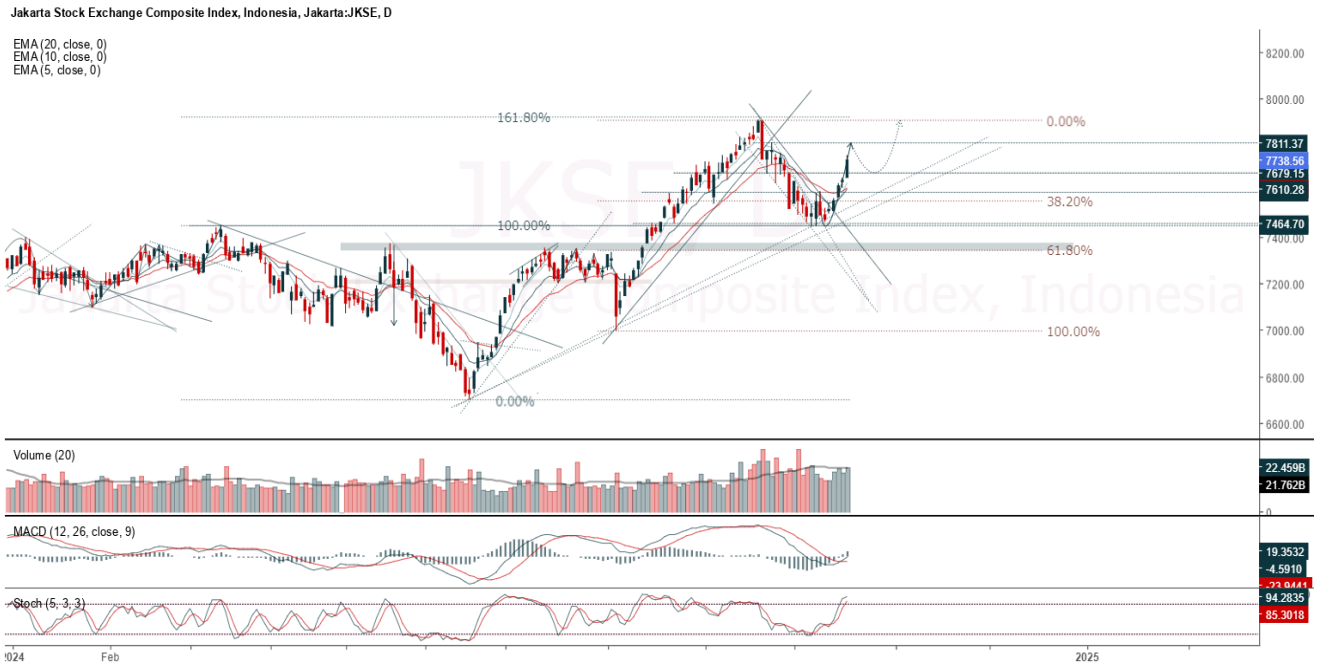


JCI Range Today 7,647 – 7,658 (Support), 7,798 – 7,810 (Resistance)



Jakarta Composite Index closed higher and breakout resistance. Indicator from stochastic is still bullish, MACD histogram is moving positive (line is golden cross) and volume is increasing. Bearish scenario: If it moves bearish, JCI is expected to weaken to the support range 7,647 – 7,658. Bullish scenario: If JCI is able to move bullish, JCI has the opportunity strengthen to the resistance range 7,798 – 7,810.

Stock Pick Today: ANTM, AVIA, BRIS, INDY

ANTM

Aneka Tambang Persero Tbk, Indonesia, Jakarta:ANTM, D



(ANTM). Price closed higher and breakout resistance. Price has the opportunity strengthen to the next resistance. Stochastic is bearish, MACD histogram is moving positive (line is bullish) and volume is increasing. Confirm buy if the next candle returns bullish or buy on support if it goes down first. Be careful if you fail to stay above the support level or become a support breakdown. **(Trading Buy)**

TRADING STRATEGY:

1. Target Price: The price has a bullish opportunity to test the resistance level 1,650. If it breaks level 1,650 then the price will go to level 1,680. We recommend to be careful if the price fails to break through or turn around the support area.

2. Stop Loss: To minimize the risk of loss, we recommend placing a stop loss at level 1,575.

Entry Buy : 1,590 – 1,620
Target Price : 1,650 – 1,680
Support : 1,580 – 1,590
Cut loss : 1,575

AVIA

Avia Avian PT Tbk, Indonesia, Jakarta:AVIA, D

EMA (13, close, 0)
EMA (34, close, 0)



(AVIA). Price closed higher and breakout resistance. Price has the opportunity strengthen to the next resistance. Stochastic is bullish, MACD histogram is moving positive (line is golden cross) and volume is increasing. Confirm buy if the next candle returns bullish or buy on support if it goes down first. Be careful if you fail to stay above the support level or become a support breakdown. **(Trading Buy)**

TRADING STRATEGY:

1. **Target Price:** The price has a bullish opportunity to test the resistance level 520. If it breaks level 520 then the price will go to level 530. We recommend to be careful if the price fails to break through or turn around the support area.

2. **Stop Loss:** To minimize the risk of loss, we recommend placing a stop loss at level 496.

Entry Buy : 500 – 510
Target Price : 520 – 530
Support : 498 – 500
Cut loss : 496

BRIS

Bank BRISyariah Tbk PT, Indonesia, Jakarta:BRIS, D

EMA (13, close, 0)
EMA (34, close, 0)



(BRIS). Price closed higher and breakup dynamic resistance at EMA 5. Price has the opportunity strengthen to the nearest resistance. Stochastic is golden cross, MACD histogram is moving positive direction (line is golden cross potential) and volume is increasing. Confirm buy if the next candle returns bullish or buy on support if it goes down first. Be careful if you fail to stay above the support level or become a support breakdown. **(Trading Buy)**

TRADING STRATEGY:

1. Target Price: The price has a bullish opportunity to test the resistance level 3,170. If it breaks level 3,170 then the price will go to level 3,220. We recommend to be careful if the price fails to break through or turn around the support area.

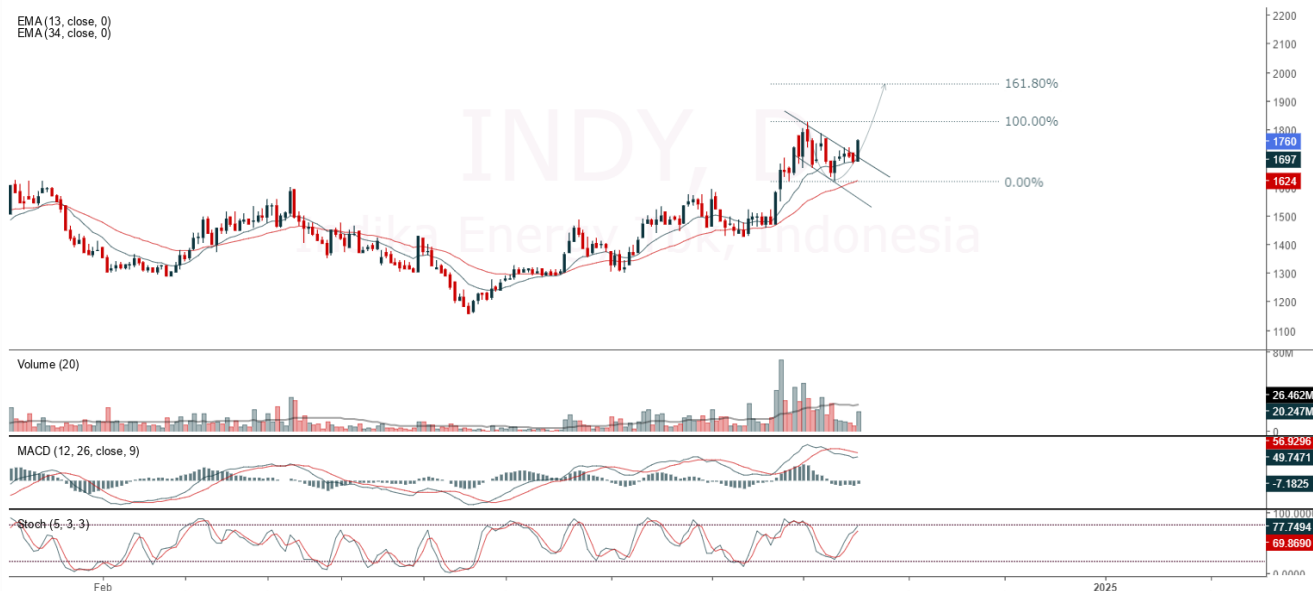
2. Stop Loss: To minimize the risk of loss, we recommend placing a stop loss at level 3,020.

Entry Buy : 3,050 – 3,110
Target Price : 3,170 – 3,220
Support : 3,030 – 3,050
Cut loss : 3,020

INDY

Indika Energy Tbk, Indonesia, Jakarta:INDY, D

EMA(13, close, 0)
EMA(34, close, 0)



(INDY). Price closed higher and formed a bullish flag pattern. Price has the opportunity strengthen to the nearest resistance. Stochastic is still bullish, MACD histogram is moving positive direction (line is golden cross potential) and volume is increasing. Confirm buy if the next candle returns bullish or buy on support if it goes down first. Be careful if you fail to stay above the support level or become a support breakdown. **(Trading Buy)**

TRADING STRATEGY:

1. **Target Price:** The price has a bullish opportunity to test the resistance level 1,795. If it breaks level 1,795 then the price will go to level 1,825. We recommend to be careful if the price fails to break through or turn around the support area.

2. **Stop Loss:** To minimize the risk of loss, we recommend placing a stop loss at level 1,715.

Entry Buy : 1,735 – 1,760
Target Price : 1,795 – 1,825
Support : 1,720 – 1,735
Cut loss : 1,715

Forecast – Technical Analysis

Ticker	MA5	RSI Rec	MACD Trend	Recomm.	Pivot Point	Support		Resistance		Stop Loss Level
						1	2	1	2	
JCI	Negative	Trading	Negative	Sell	7,700	7,650	7,600	7,750	7,800	7,500
ACES	Positive	Trading	Negative	Hold	900	885	880	905	920	865
ADRO	Negative	Trading	Negative	Sell	3,875	3,840	3,795	3,920	3,955	3,740
AKRA	Positive	Trading	Negative	Hold	1,490	1,475	1,460	1,505	1,520	1,435
AMMN	Negative	Trading	Positive	Hold	9,800	9,650	9,550	9,900	10,050	9,400
AMRT	Negative	Overbought	Negative	Strong Sell	3,305	3,260	3,215	3,350	3,395	3,165
ANTM	Negative	Overbought	Positive	Sell	1,600	1,575	1,545	1,630	1,655	1,520
ARTO	Negative	Trading	Negative	Sell	2,855	2,805	2,775	2,885	2,935	2,730
ASII	Positive	Trading	Negative	Hold	4,950	4,930	4,910	4,970	4,990	4,835
BBCA	Negative	Trading	Negative	Sell	10,650	10,500	10,350	10,800	10,950	10,200
BBNI	Negative	Trading	Negative	Sell	5,525	5,450	5,425	5,550	5,625	5,325
BBRI	Negative	Trading	Negative	Sell	4,985	4,915	4,875	5,025	5,100	4,800
BBTN	Negative	Overbought	Positive	Sell	1,510	1,495	1,485	1,520	1,535	1,460
BMRI	Negative	Trading	Negative	Sell	7,125	7,025	6,875	7,275	7,375	6,775
BRIS	Negative	Trading	Negative	Sell	3,080	3,015	2,960	3,135	3,200	2,915
BRPT	Negative	Oversold	Negative	Spec. Buy	1,020	1,005	990	1,035	1,050	975
BUKA	Negative	Trading	Positive	Hold	134	133	130	137	138	128
CPIN	Negative	Overbought	Positive	Sell	5,025	4,995	4,965	5,050	5,075	4,890
ESSA	Positive	Trading	Negative	Hold	950	920	900	970	1,000	885
EXCL	Positive	Trading	Positive	Spec. Buy	2,290	2,265	2,250	2,305	2,330	2,215
GGRM	Negative	Trading	Negative	Sell	15,650	15,550	15,500	15,700	15,800	15,275
GOTO	Negative	Overbought	Negative	Strong Sell	67	67	65	69	69	64
HRUM	Negative	Trading	Negative	Sell	1,345	1,335	1,325	1,355	1,365	1,305
ICBP	Negative	Overbought	Negative	Strong Sell	12,500	12,350	12,200	12,650	12,800	12,025
INCO	Negative	Trading	Negative	Sell	4,130	4,095	4,070	4,155	4,190	4,005
INDF	Negative	Trading	Negative	Sell	7,200	7,125	7,100	7,225	7,300	7,000
INKP	Negative	Trading	Negative	Sell	8,250	8,200	8,125	8,325	8,375	8,000
INTP	Negative	Overbought	Positive	Sell	7,675	7,375	7,125	7,925	8,225	7,000
ISAT	Positive	Oversold	Negative	Spec. Buy	2,445	2,395	2,365	2,475	2,525	2,325
ITMG	Positive	Trading	Negative	Hold	25,975	25,825	25,750	26,050	26,200	25,350
JSMR	Positive	Trading	Positive	Spec. Buy	4,855	4,825	4,805	4,875	4,905	4,730
KLBF	Negative	Trading	Negative	Sell	1,710	1,690	1,665	1,735	1,755	1,640
MAPI	Negative	Overbought	Negative	Strong Sell	1,790	1,770	1,755	1,805	1,825	1,725
MBMA	Negative	Trading	Negative	Sell	535	525	515	545	555	505
MDKA	Positive	Trading	Negative	Hold	2,545	2,525	2,495	2,575	2,595	2,455
MEDC	Positive	Trading	Negative	Hold	1,305	1,290	1,280	1,315	1,330	1,260
MTEL	Negative	Trading	Positive	Hold	640	635	620	655	660	610
PGAS	Negative	Trading	Positive	Hold	1,540	1,530	1,510	1,560	1,570	1,490
PGEO	Negative	Trading	Positive	Hold	1,180	1,170	1,155	1,195	1,205	1,140
PTBA	Negative	Overbought	Negative	Strong Sell	3,075	3,055	3,045	3,085	3,105	2,995
SIDO	Negative	Trading	Positive	Hold	670	670	660	680	680	650
SMGR	Negative	Overbought	Positive	Sell	4,480	4,355	4,250	4,585	4,710	4,185
TLKM	Negative	Trading	Negative	Sell	3,020	2,980	2,940	3,060	3,100	2,895
TOWR	Positive	Trading	Negative	Hold	815	805	790	830	840	775
UNTR	Negative	Trading	Negative	Sell	26,575	26,225	25,975	26,825	27,175	25,575
UNVR	Negative	Overbought	Positive	Sell	2,390	2,365	2,350	2,405	2,430	2,310

OUR TEAM

Sukarno Alatas

Head of Equity Research

sukarno@kiwoom.co.id | 021 5010 5800**Abdul Azis Setyo Wibowo**

Equity Research Analyst

azis@kiwoom.co.id | 021 5010 5800**Miftahul Khaer**

Equity Research Analyst

khaer.miftahul@kiwoom.co.id | 021 5010 5800**Vicky Rosalinda**

Equity Research Analyst

vicky.rosalinda@kiwoom.co.id | 021 5010 5800**OTHER DISCLOSURES**

All Kiwoom's research reports made available to clients are simultaneously available on our own website <http://www.kiwoom.co.id/>. Not all research content is redistributed, e-mailed or made available to third-party aggregators. For all research reports available on a particular stock, please contact your sales representative. Any data discrepancies in this report could be the result of different calculations and/or adjustments.

DISCLAIMER This report has been prepared and issued by PT Kiwoom Sekuritas Indonesia. Information has been obtained from sources believed to be reliable but Kiwoom Securities do not warrant its completeness or accuracy. Forward-looking information or statements in this report contain information that is based on forecast of future results, estimates of amounts not yet determinable, assumptions, and therefore involve known and unknown risks and uncertainties which may cause the actual results, performance or achievements of their subject matter to be materially different from current expectations.

To the fullest extent allowed by law, PT Kiwoom Sekuritas Indonesia shall not be liable for any direct, indirect or consequential losses, loss of profits, damages, costs or expenses incurred or suffered by any person or organization arising from reliance on or use of any information contained on this report. The information that we provide should not be construed in any manner whatsoever as, personalized advice.

No mention of a particular security in this report constitutes a recommendation to buy, sell or hold that or any security, or that any particular security, portfolio of securities, transaction or investment strategy is suitable for any specific person. This report is being supplied to you solely for your information and may not be reproduced by, further distributed to or published in whole or in part by, any other person.