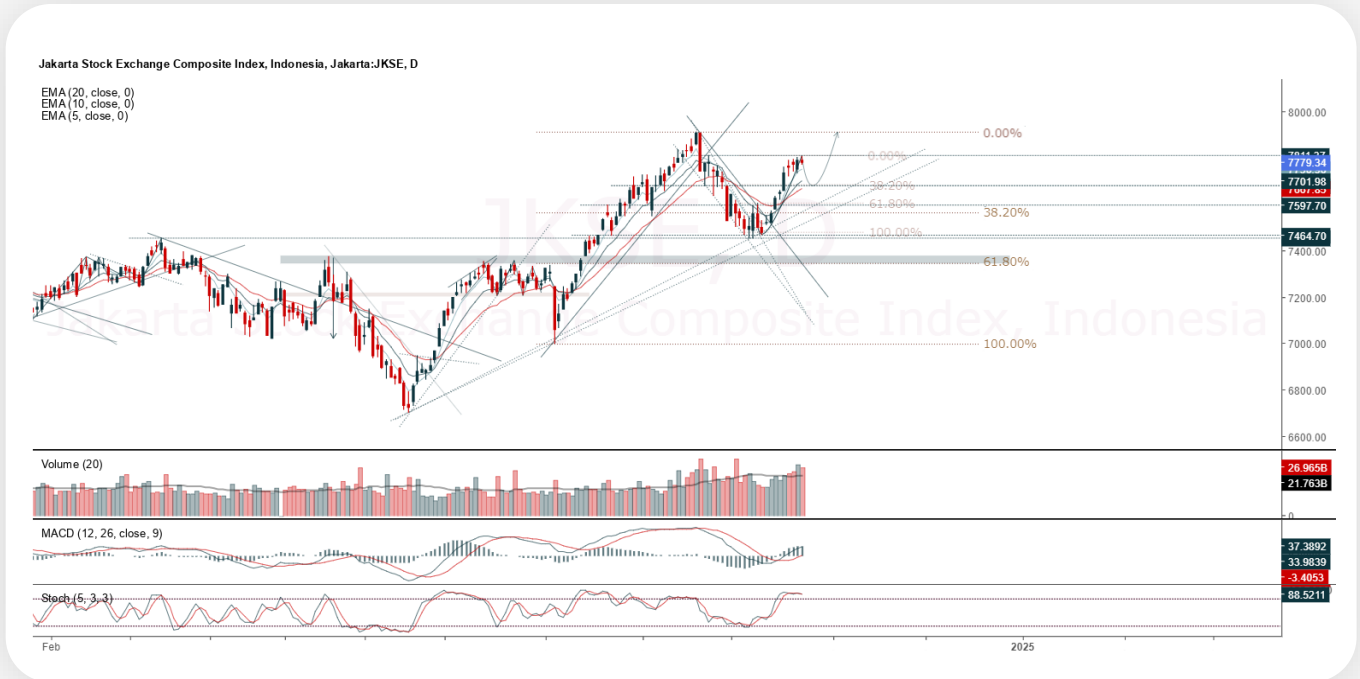




JCI Range Today

7,718 – 7,739 (Support), 7,829 – 7,854 (Resistance)



Jakarta Composite Index closed negative with long legged doji candle. Indicator from stochastic is death cross, MACD histogram is moving positive (line is bullish) and volume is decreasing. Bearish scenario: If it moves bearish, JCI is expected to weaken to the support range 7,718 – 7,739. Bullish scenario: If JCI is able to move bullish, JCI has the opportunity strengthen to the resistance range 7,829 – 7,854.

Stock Pick Today:



AUTO



BUMI



JPFA



SIMP



AUTO

Astra Otoparts Tbk.



(AUTO). Price closed higher and breakout resistance. Price has the opportunity strengthen to the next resistance. Stochastic is golden cross, MACD histogram is moving positive (line is bullish) and volume is increasing. Confirm buy if the next candle returns bullish or buy on support if it goes down first. Be careful if you fail to stay above the support level or become a support breakdown. **(Trading Buy)**

TRADING STRATEGY:

Target Price:

The price has a bullish opportunity to test the resistance level 2,580. If it breaks level 2,580 then the price will go to level 2,620. We recommend to be careful if the price fails to break through or turn around the support area.

Stop Loss:

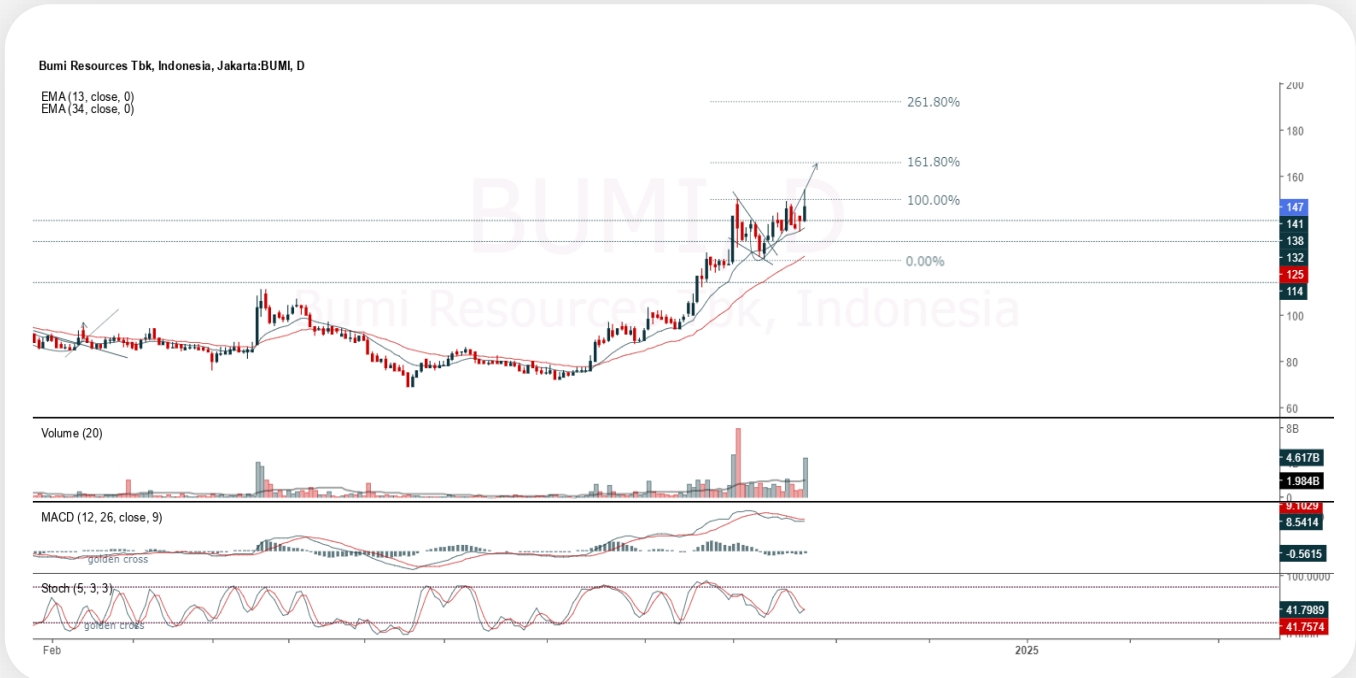
To minimize the risk of loss, we recommend placing a stop loss at level 2,460.

Entry Buy : 2,480 – 2,530
 Target Price : 2,580 – 2,620
 Support : 2,470 – 2,480
 Cut loss : 2,460



BUMI

Bumi Resources Tbk.



(BUMI). Price closed higher and breakout resistance. Price has the opportunity strengthen to the next resistance. Stochastic is golden cross, MACD histogram is moving positive direction (line is golden cross potential) and volume is increasing. Confirm buy if the next candle returns bullish or buy on support if it goes down first. Be careful if you fail to stay above the support level or become a support breakdown.
(Trading Buy)

TRADING STRATEGY:

Target Price:

The price has a bullish opportunity to test the resistance level 150. If it breaks level 150 then the price will go to level 153. We recommend to be careful if the price fails to break through or turn around the support area.

Stop Loss:

To minimize the risk of loss, we recommend placing a stop loss at level 142.

- Entry Buy : 144 – 147
- Target Price : 150 – 153
- Support : 143 – 144
- Cut loss : 142



JPFA

Japfa Comfeed Indonesia Tbk.



(JPFA). Price closed higher and breakup dynamic resistance at EMA 5. Price has the opportunity strengthen to the nearest resistance. Stochastic is golden cross, MACD histogram is moving positive (line is bullish) and volume is increasing. Confirm buy if the next candle returns bullish or buy on support if it goes down first. Be careful if you fail to stay above the support level or become a support breakdown. **(Trading Buy)**

TRADING STRATEGY:

Target Price:

The price has a bullish opportunity to test the resistance level 1,670. If it breaks level 1,670 then the price will go to level 1,700. We recommend to be careful if the price fails to break through or turn around the support area.

Stop Loss:

To minimize the risk of loss, we recommend placing a stop loss at level 1,595.

Entry Buy	: 1,610 – 1,640
Target Price	: 1,670 – 1,700
Support	: 1,600 – 1,610
Cut loss	: 1,595



SIMP

Salim Ivomas Pratama Tbk.



(SIMP). Price closed higher and breakout harmonic resistance (FR 100.00%). Price has the opportunity strengthen to the next resistance. Stochastic is bullish, MACD histogram is moving positive (line is bullish) and volume is increasing. Confirm buy if the next candle returns bullish or buy on support if it goes down first. Be careful if you fail to stay above the support level or become a support breakdown. **(Trading Buy)**

TRADING STRATEGY:

Target Price:

The price has a bullish opportunity to test the resistance level 444. If it breaks level 444 then the price will go to level 452. We recommend to be careful if the price fails to break through or turn around the support area.

Stop Loss:

To minimize the risk of loss, we recommend placing a stop loss at level 424.

Entry Buy	: 428 – 436
Target Price	: 444 – 452
Support	: 426 – 428
Cut loss	: 424



Forecast – Technical Analysis

Ticker	MA5	RSI Rec	MACD Trend	Recomm.	Pivot Point	Support 1	Support 2	Resistance 1	Resistance 2	Stop Loss Level
JCI	Negative	Overbought	Positive	Sell	7,775	7,750	7,750	7,800	7,825	7,625
ACES	Negative	Overbought	Positive	Sell	930	925	910	945	950	900
ADRO	Positive	Trading	Negative	Hold	3,710	3,680	3,650	3,740	3,770	3,595
AKRA	Positive	Oversold	Negative	Spec. Buy	1,445	1,435	1,425	1,455	1,465	1,405
AMMN	Positive	Trading	Positive	Spec. Buy	9,450	9,325	9,175	9,600	9,725	9,025
AMRT	Negative	Overbought	Positive	Sell	3,525	3,400	3,315	3,610	3,735	3,265
ANTM	Negative	Overbought	Positive	Sell	1,665	1,645	1,620	1,690	1,710	1,595
ARTO	Negative	Trading	Negative	Sell	2,940	2,915	2,880	2,975	3,000	2,835
ASII	Negative	Overbought	Positive	Sell	5,275	5,225	5,150	5,350	5,400	5,050
BBCA	Negative	Trading	Positive	Hold	10,575	10,475	10,400	10,650	10,750	10,225
BBNI	Negative	Overbought	Positive	Sell	5,650	5,650	5,575	5,725	5,725	5,500
BBRI	Positive	Trading	Positive	Spec. Buy	4,850	4,805	4,770	4,885	4,930	4,695
BBTN	Positive	Trading	Positive	Spec. Buy	1,475	1,460	1,445	1,490	1,505	1,425
BMRI	Negative	Trading	Positive	Hold	7,075	7,025	6,975	7,125	7,175	6,875
BRIS	Negative	Trading	Negative	Sell	3,010	2,985	2,960	3,035	3,060	2,915
BRPT	Negative	Trading	Positive	Hold	1,045	1,035	1,010	1,070	1,080	995
BUKA	Positive	Trading	Positive	Spec. Buy	134	132	130	136	138	128
CPIN	Positive	Trading	Positive	Spec. Buy	5,025	4,995	4,950	5,075	5,125	4,875
ESSA	Negative	Overbought	Negative	Strong Sell	970	945	920	995	1,020	905
EXCL	Positive	Trading	Negative	Hold	2,270	2,240	2,210	2,300	2,330	2,175
GGRM	Negative	Trading	Negative	Sell	15,525	15,450	15,400	15,575	15,650	15,175
GOTO	Negative	Overbought	Positive	Sell	73	72	70	75	76	69
HRUM	Positive	Trading	Negative	Hold	1,340	1,325	1,310	1,355	1,370	1,290
ICBP	Negative	Trading	Positive	Hold	12,575	12,475	12,425	12,625	12,725	12,225
INCO	Negative	Overbought	Negative	Strong Sell	4,230	4,195	4,160	4,265	4,300	4,095
INDF	Negative	Overbought	Positive	Sell	7,475	7,425	7,350	7,550	7,600	7,250
INKP	Positive	Oversold	Negative	Spec. Buy	8,150	8,100	8,025	8,225	8,275	7,900
INTP	Negative	Overbought	Positive	Sell	7,800	7,675	7,575	7,900	8,025	7,450
ISAT	Positive	Oversold	Negative	Spec. Buy	2,450	2,415	2,390	2,475	2,510	2,350
ITMG	Negative	Trading	Negative	Sell	25,800	25,675	25,525	25,950	26,075	25,125
JSMR	Positive	Oversold	Positive	Buy	4,830	4,810	4,780	4,860	4,880	4,710
KLBF	Positive	Trading	Negative	Hold	1,675	1,665	1,645	1,695	1,705	1,620
MAPI	Positive	Trading	Negative	Hold	1,760	1,730	1,710	1,780	1,810	1,685
MBMA	Negative	Trading	Negative	Sell	535	530	525	540	545	515
MDKA	Negative	Trading	Negative	Sell	2,560	2,525	2,500	2,585	2,620	2,460
MEDC	Negative	Trading	Negative	Sell	1,350	1,335	1,325	1,360	1,375	1,305
MTEL	Positive	Trading	Positive	Spec. Buy	640	635	625	650	655	615
PGAS	Positive	Trading	Positive	Spec. Buy	1,555	1,535	1,525	1,565	1,585	1,500
PGEO	Positive	Trading	Negative	Hold	1,140	1,135	1,130	1,145	1,150	1,110
PTBA	Positive	Trading	Negative	Hold	3,000	2,945	2,900	3,045	3,100	2,855
SIDO	Positive	Trading	Positive	Spec. Buy	660	655	650	665	670	640
SMGR	Negative	Trading	Positive	Hold	4,300	4,235	4,180	4,355	4,420	4,115
TLKM	Negative	Trading	Positive	Hold	2,950	2,915	2,900	2,965	3,000	2,855
TOWR	Positive	Oversold	Negative	Spec. Buy	805	795	790	810	820	775
UNTR	Negative	Trading	Positive	Hold	27,000	26,925	26,775	27,150	27,225	26,375
UNVR	Positive	Trading	Positive	Spec. Buy	2,320	2,300	2,270	2,350	2,370	2,235



Kiwoom Research Team



Sukarno Alat

Head of Equity Research
sukarno@kiwoom.co.id | 021 5010 5800



Abdul Azis Setyo W.

Equity Research Analyst
azis@kiwoom.co.id | 021 5010 5800



Vicky Rosalinda

Equity Research Analyst
vicky.rosalinda@kiwoom.co.id | 021 5010 5800



Miftahul Khaer

Equity Research Analyst
khaer.miftahul@kiwoom.co.id | 021 5010 5800



HEAD OFFICE

Treasury Tower 27th Floor Unit A, District 8 Kawasan SCBD Lot 28,
Jl.Jend.Sudirman Kav 52-53, Jakarta Selatan 12190

Tel : (021) 5010 5800
Fax : (021) 5010 5820
Email : cs@kiwoom.co.id

Terdaftar dan
diawasi oleh :  OTORITAS
JASA
REKREASI

OTHER DISCLOSURES

All Kiwoom's research reports made available to clients are simultaneously available on our own website <http://www.kiwoom.co.id/>. Not all research content is redistributed, e-mailed or made available to third-party aggregators. For all research reports available on a particular stock, please contact your sales representative. Any data discrepancies in this report could be the result of different calculations and/or adjustments.

DISCLAIMER

This report has been prepared and issued by PT Kiwoom Sekuritas Indonesia. Information has been obtained from sources believed to be reliable but Kiwoom Securities do not warrant its completeness or accuracy. Forward-looking information or statements in this report contain information that is based on forecast of future results, estimates of amounts not yet determinable, assumptions, and therefore involve known and unknown risks and uncertainties which may cause the actual results, performance or achievements of their subject matter to be materially different from current expectations. To the fullest extent allowed by law, PT Kiwoom Sekuritas Indonesia shall not be liable for any direct, indirect or consequential losses, loss of profits, damages, costs or expenses incurred or suffered by any person or organization arising from reliance on or use of any information contained on this report. The information that we provide should not be construed in any manner whatsoever as, personalized advice. No mention of a particular security in this report constitutes a recommendation to buy, sell or hold that or any security, or that any particular security, portfolio of securities, transaction or investment strategy is suitable for any specific person. This report is being supplied to you solely for your information and may not be reproduced by, further distributed to or published in whole or in part by, any other person.