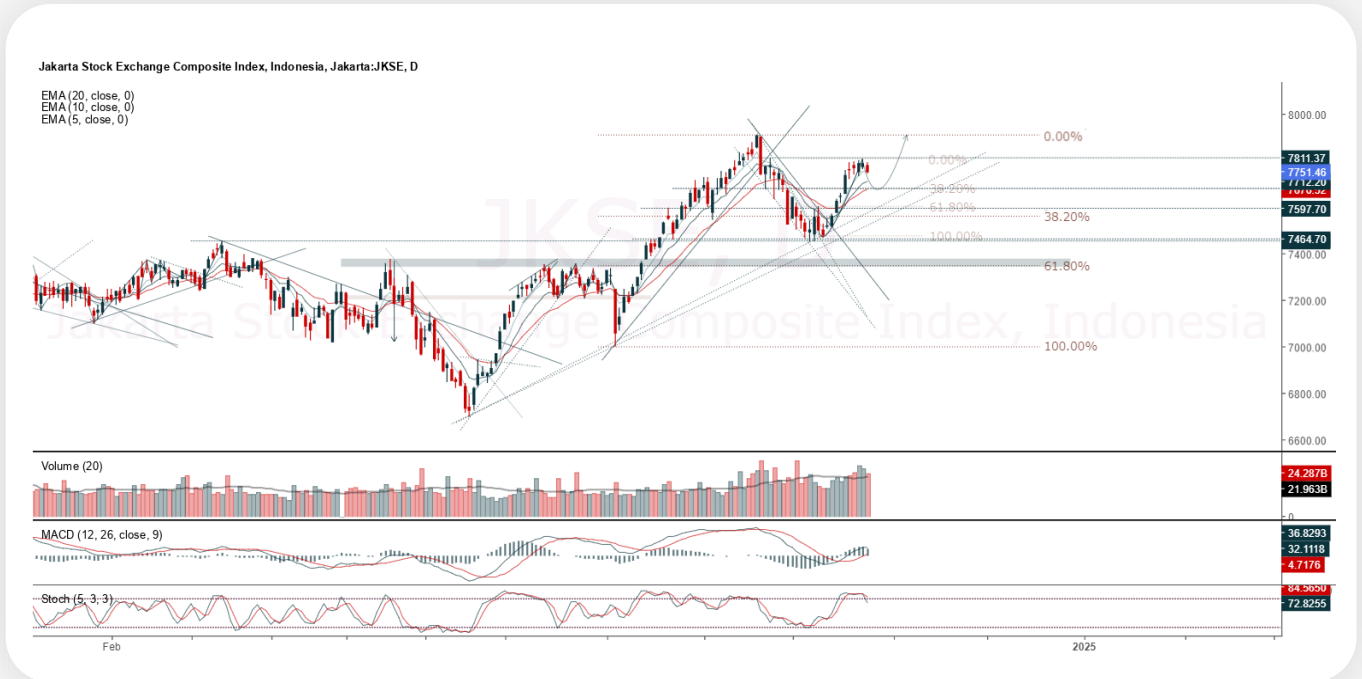




JCI Range Today

7,647 – 7,658 (Support), 7,761 – 7,772 (Resistance)



Jakarta Composite Index closed negative and breakdown dynamic support at EMA 5. Indicator from stochastic is bearish, MACD histogram is moving positive (line is flat) and volume is decreasing. Bearish scenario: If it moves bearish again, JCI is expected to weaken to the support range 7,647 – 7,658. Bullish scenario: If JCI is able to move bullish, JCI has the opportunity strengthen to the resistance range 7,761 – 7,772.

Stock Pick Today:



BRIS



CPIN



EMTK



TOBA



BRIS

Bank Syariah Indonesia Tbk.



(BRIS). Price closed higher and breakup dynamic resistance at EMA 5 & 10. Price has the opportunity strengthen to the nearest resistance. Stochastic is golden cross potential, MACD histogram is moving positive direction (line is sloping) and volume is increasing. Confirm buy if the next candle returns bullish or buy on support if it goes down first. Be careful if you fail to stay above the support level or become a support breakdown. **(Trading Buy)**

TRADING STRATEGY:

Target Price:

The price has a bullish opportunity to test the resistance level 3,150. If it breaks level 3,150 then the price will go to level 3,200. We recommend to be careful if the price fails to break through or turn around the support area.

Stop Loss:

To minimize the risk of loss, we recommend placing a stop loss at level 3,000.

Entry Buy	: 3,030 – 3,090
Target Price	: 3,150 – 3,200
Support	: 3,010 – 3,030
Cut loss	: 3,000



CPIN

Charoen Pokphand Indonesia Tbk.



(CPIN). Price closed higher and breakout harmonic resistance (FR 38.20%). Price has the opportunity strengthen to the next resistance. Stochastic is golden cross, MACD histogram is moving positive (line is bullish) and volume is increasing. Confirm buy if the next candle returns bullish or buy on support if it goes down first. Be careful if you fail to stay above the support level or become a support breakdown. **(Trading Buy)**

TRADING STRATEGY:

Target Price:

The price has a bullish opportunity to test the resistance level 5,250. If it breaks level 5,250 then the price will go to level 5,350. We recommend to be careful if the price fails to break through or turn around the support area.

Stop Loss:

To minimize the risk of loss, we recommend placing a stop loss at level 5,000.

Entry Buy : 5,050 – 5,150
Target Price : 5,250 – 5,350
Support : 5,025 – 5,050
Cut loss : 5,000



EMTK

Elang Mahkota Teknologi Tbk.



(EMTK). Price closed higher and breakout resistance. Price has the opportunity strengthen to the next resistance. Stochastic is death cross, MACD histogram is moving positive (line is bullish) and volume is increasing. Confirm buy if the next candle returns bullish or buy on support if it goes down first. Be careful if you fail to stay above the support level or become a support breakdown. **(Trading Buy)**

TRADING STRATEGY:

Target Price:

The price has a bullish opportunity to test the resistance level 520. If it breaks level 520 then the price will go to level 530. We recommend to be careful if the price fails to break through or turn around the support area.

Stop Loss:

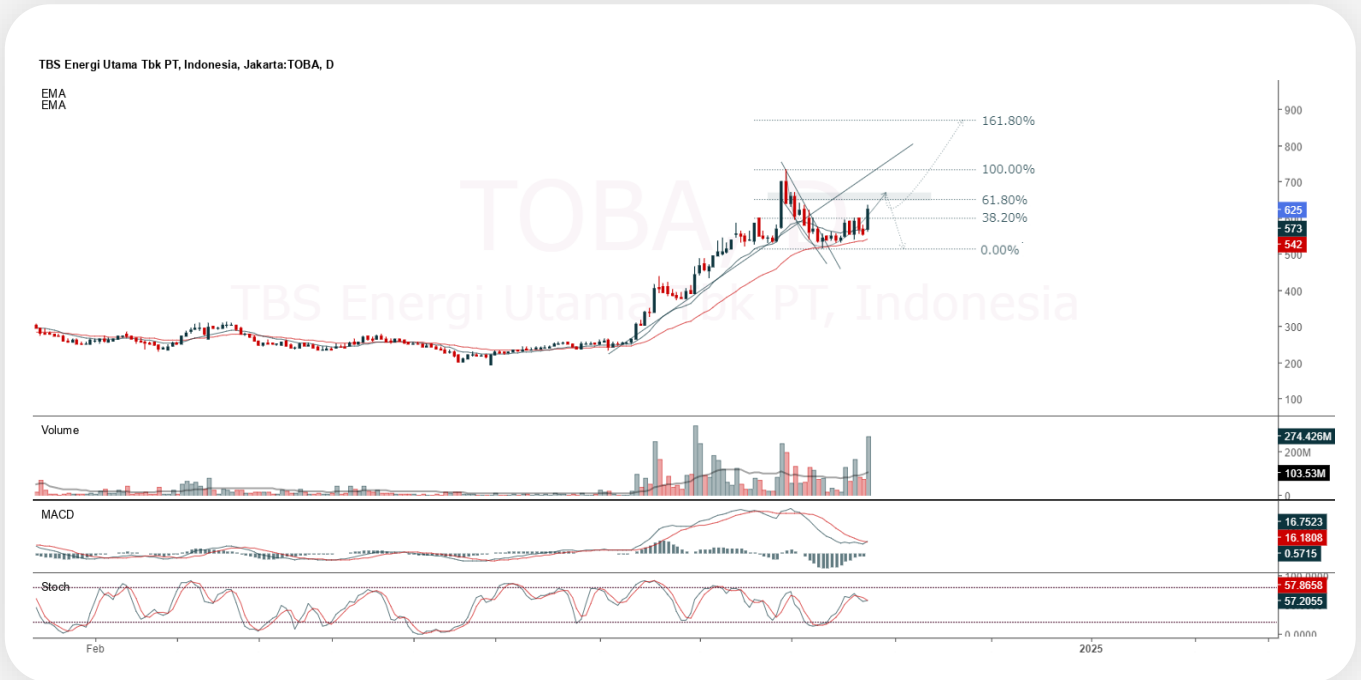
To minimize the risk of loss, we recommend placing a stop loss at level 496.

Entry Buy	: 500 – 510
Target Price	: 520 – 530
Support	: 498 – 500
Cut loss	: 496



TOBA

TBS Energi Utama Tbk.



(TOBA). Price closed higher and breakout harmonic resistance (FR 38.20%). Price has the opportunity strengthen to the next resistance. Stochastic is golden cross potential, MACD histogram is moving positive direction (line is golden cross potential) and volume is increasing. Confirm buy if the next candle returns bullish or buy on support if it goes down first. Be careful if you fail to stay above the support level or become a support breakdown. **(Trading Buy)**

TRADING STRATEGY:

Target Price:

The price has a bullish opportunity to test the resistance level 640. If it breaks level 640 then the price will go to level 650. We recommend to be careful if the price fails to break through or turn around the support area.

Stop Loss:

To minimize the risk of loss, we recommend placing a stop loss at level 605.

Entry Buy : 615 – 625
 Target Price : 640 – 650
 Support : 610 – 615
 Cut loss : 605



Forecast – Technical Analysis

Ticker	MA5	RSI Rec	MACD Trend	Recomm.	Pivot Point	Support		Resistance		Stop Loss Level
						1	2	1	2	
JCI	Negative	Trading	Positive	Hold	7,750	7,700	7,675	7,775	7,825	7,550
ACES	Negative	Overbought	Positive	Sell	920	910	895	935	945	880
ADRO	Positive	Trading	Negative	Hold	3,690	3,665	3,650	3,705	3,730	3,595
AKRA	Positive	Oversold	Negative	Spec. Buy	1,430	1,415	1,400	1,445	1,460	1,380
AMMN	Positive	Trading	Positive	Spec. Buy	9,350	9,200	9,075	9,475	9,625	8,925
AMRT	Negative	Strong Sell	Positive	Sell	3,570	3,515	3,480	3,605	3,660	3,425
ANTM	Negative	Overbought	Positive	Sell	1,635	1,615	1,605	1,645	1,665	1,580
ARTO	Negative	Trading	Positive	Hold	2,945	2,905	2,875	2,975	3,015	2,830
ASII	Negative	Overbought	Positive	Sell	5,275	5,250	5,175	5,350	5,375	5,100
BBCA	Positive	Trading	Positive	Spec. Buy	10,750	10,650	10,600	10,800	10,900	10,425
BBNI	Negative	Overbought	Positive	Sell	5,650	5,600	5,575	5,675	5,725	5,500
BBRI	Positive	Trading	Negative	Hold	4,840	4,775	4,750	4,865	4,930	4,675
BBTN	Positive	Trading	Positive	Spec. Buy	1,490	1,470	1,455	1,505	1,525	1,430
BMRI	Positive	Trading	Positive	Spec. Buy	7,025	6,900	6,850	7,075	7,200	6,750
BRIS	Positive	Trading	Negative	Hold	3,060	3,005	2,960	3,105	3,160	2,915
BRPT	Positive	Trading	Positive	Spec. Buy	1,035	1,020	1,005	1,050	1,065	990
BUKA	Negative	Trading	Negative	Sell	137	131	125	143	149	123
CPIN	Negative	Trading	Positive	Hold	5,125	5,025	4,965	5,175	5,275	4,890
ESSA	Negative	Trading	Negative	Sell	965	945	930	980	1,000	915
EXCL	Negative	Trading	Negative	Sell	2,270	2,240	2,220	2,290	2,320	2,185
GGRM	Positive	Trading	Negative	Hold	15,475	15,325	15,250	15,550	15,700	15,000
GOTO	Negative	Overbought	Positive	Sell	73	72	71	74	75	70
HRUM	Positive	Trading	Negative	Hold	1,320	1,310	1,300	1,330	1,340	1,280
ICBP	Negative	Trading	Positive	Hold	12,575	12,475	12,400	12,650	12,750	12,225
INCO	Negative	Trading	Negative	Sell	4,160	4,120	4,080	4,200	4,240	4,020
INDF	Negative	Overbought	Positive	Sell	7,525	7,475	7,450	7,550	7,600	7,325
INKP	Positive	Oversold	Negative	Spec. Buy	8,100	8,025	7,975	8,150	8,225	7,850
INTP	Positive	Overbought	Positive	Hold	7,750	7,700	7,625	7,825	7,875	7,500
ISAT	Negative	Trading	Negative	Sell	2,455	2,435	2,415	2,475	2,495	2,375
ITMG	Positive	Oversold	Negative	Spec. Buy	25,725	25,625	25,600	25,750	25,850	25,200
JSMR	Positive	Oversold	Positive	Buy	4,820	4,795	4,780	4,835	4,860	4,705
KLBF	Positive	Trading	Negative	Hold	1,660	1,645	1,625	1,680	1,695	1,600
MAPI	Positive	Trading	Negative	Hold	1,730	1,710	1,675	1,765	1,785	1,645
MBMA	Negative	Trading	Negative	Sell	530	525	520	535	540	510
MDKA	Positive	Trading	Negative	Hold	2,535	2,505	2,475	2,565	2,595	2,435
MEDC	Negative	Trading	Negative	Sell	1,340	1,330	1,315	1,355	1,365	1,295
MTEL	Negative	Trading	Positive	Hold	640	630	620	650	660	610
PGAS	Negative	Trading	Positive	Hold	1,545	1,530	1,520	1,555	1,570	1,495
PGEO	Positive	Trading	Negative	Hold	1,135	1,125	1,120	1,140	1,150	1,100
PTBA	Positive	Trading	Negative	Hold	2,940	2,910	2,890	2,960	2,990	2,845
SIDO	Positive	Trading	Positive	Spec. Buy	645	625	600	670	690	590
SMGR	Positive	Trading	Positive	Spec. Buy	4,290	4,245	4,210	4,325	4,370	4,145
TLKM	Positive	Trading	Positive	Spec. Buy	2,925	2,890	2,865	2,950	2,985	2,820
TOWR	Positive	Oversold	Negative	Spec. Buy	800	800	790	810	810	780
UNTR	Negative	Trading	Positive	Hold	26,950	26,875	26,775	27,050	27,125	26,375
UNVR	Positive	Trading	Positive	Spec. Buy	2,150	2,100	2,050	2,200	2,250	2,020



Kiwoom Research Team



Sukarno Alatas

Head of Equity Research
sukarno@kiwoom.co.id | 021 5010 5800



Abdul Azis Setyo W.

Equity Research Analyst
azis@kiwoom.co.id | 021 5010 5800



Vicky Rosalinda

Equity Research Analyst
vicky.rosalinda@kiwoom.co.id | 021 5010 5800



Miftahul Khaer

Equity Research Analyst
khaer.miftahul@kiwoom.co.id | 021 5010 5800



HEAD OFFICE

Treasury Tower 27th Floor Unit A, District 8 Kawasan SCBD Lot 28,
Jl.Jend.Sudirman Kav 52-53, Jakarta Selatan 12190

Tel : (021) 5010 5800
Fax : (021) 5010 5820
Email : cs@kiwoom.co.id

Terdaftar dan
diawasi oleh :  OTORITAS
JASA
RELUANGAN

OTHER DISCLOSURES

All Kiwoom's research reports made available to clients are simultaneously available on our own website <http://www.kiwoom.co.id/>. Not all research content is redistributed, e-mailed or made available to third-party aggregators. For all research reports available on a particular stock, please contact your sales representative. Any data discrepancies in this report could be the result of different calculations and/or adjustments.

DISCLAIMER

This report has been prepared and issued by PT Kiwoom Sekuritas Indonesia. Information has been obtained from sources believed to be reliable but Kiwoom Securities do not warrant its completeness or accuracy. Forward-looking information or statements in this report contain information that is based on forecast of future results, estimates of amounts not yet determinable, assumptions, and therefore involve known and unknown risks and uncertainties which may cause the actual results, performance or achievements of their subject matter to be materially different from current expectations. To the fullest extent allowed by law, PT Kiwoom Sekuritas Indonesia shall not be liable for any direct, indirect or consequential losses, loss of profits, damages, costs or expenses incurred or suffered by any person or organization arising from reliance on or use of any information contained on this report. The information that we provide should not be construed in any manner whatsoever as, personalized advice. No mention of a particular security in this report constitutes a recommendation to buy, sell or hold that or any security, or that any particular security, portfolio of securities, transaction or investment strategy is suitable for any specific person. This report is being supplied to you solely for your information and may not be reproduced by, further distributed to or published in whole or in part by, any other person.