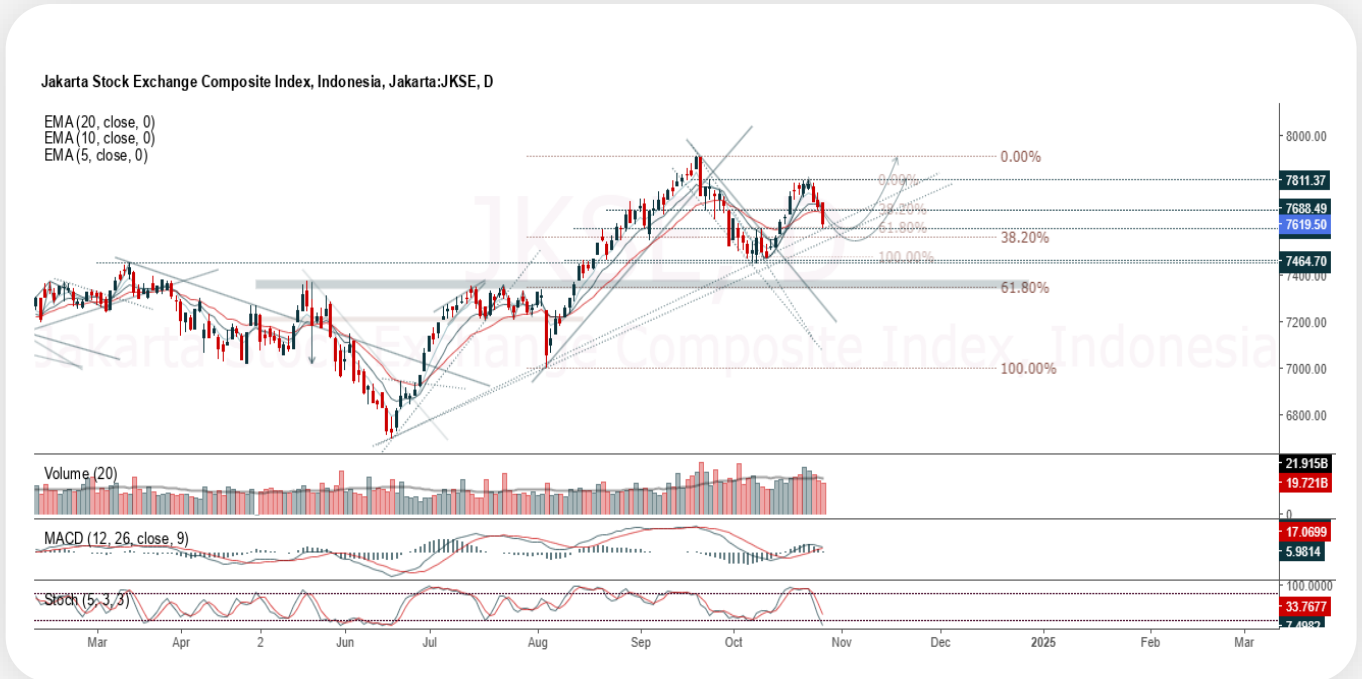




JCI Range Today

7,563 – 7,581 (Support), 7,678 – 7,694 (Resistance)



Jakarta Composite Index closed negative and breakdown support. Indicator from stochastic is still bearish, MACD histogram is moving negative direction (line is death cross potential) and volume is decreasing. Bearish scenario: If it moves bearish again, JCI is expected to weaken again to the support range 7,563 – 7,581. Bullish scenario: If JCI is able to move bullish, JCI has the opportunity strengthen to the resistance range 7,678 – 7,694.

Stock Pick Today:



ADMR



ERAL



INKP



PTPP



ADMR

Adaro Minerals Indonesia Tbk.



(ADMR). Price closed higher and breakout resistance. Price has the opportunity strengthen to the next resistance. Stochastic is golden cross, MACD histogram is moving positive direction (line is golden cross potential) and volume is increasing. Confirm buy if the next candle returns bullish or buy on support if it goes down first. Be careful if you fail to stay above the support level or become a support breakdown.
(Trading Buy)

TRADING STRATEGY:

Target Price:

The price has a bullish opportunity to test the resistance level 1,490. If it breaks level 1,490 then the price will go to level 1,515. We recommend to be careful if the price fails to break through or turn around the support area.

Stop Loss:

To minimize the risk of loss, we recommend placing a stop loss at level 1,420.

Entry Buy : 1,435 – 1,460
Target Price : 1,490 – 1,515
Support : 1,425 – 1,435
Cut loss : 1,420



ERAL

Sinar Eka Selaras Tbk.



(ERAL). Price closed higher and breakout resistance. Price has the opportunity strengthen to the next resistance. Stochastic is golden cross, MACD histogram is moving positive (line is bullish) and volume is increasing. Confirm buy if the next candle returns bullish or buy on support if it goes down first. Be careful if you fail to stay above the support level or become a support breakdown. **(Trading Buy)**

TRADING STRATEGY:

Target Price:

The price has a bullish opportunity to test the resistance level 288. If it breaks level 288 then the price will go to level 294. We recommend to be careful if the price fails to break through or turn around the support area.

Stop Loss:

To minimize the risk of loss, we recommend placing a stop loss at level 272.

- Entry Buy : 276 – 282
- Target Price : 288 – 294
- Support : 274 – 276
- Cut loss : 272



INKP

Indah Kiat Pulp & Paper Tbk.



(INKP). Price closed higher and breakup trendline resistance. Price has the opportunity strengthen to the nearest resistance. Stochastic is bullish, MACD histogram is moving positive direction (line is golden cross potential) and volume is increasing. Confirm buy if the next candle returns bullish or buy on support if it goes down first. Be careful if you fail to stay above the support level or become a support breakdown. **(Trading Buy)**

TRADING STRATEGY:

Target Price:

The price has a bullish opportunity to test the resistance level 8,325. If it breaks level 8,325 then the price will go to level 8,475. We recommend to be careful if the price fails to break through or turn around the support area.

Stop Loss:

To minimize the risk of loss, we recommend placing a stop loss at level 7,950.

Entry Buy	: 8,025 – 8,175
Target Price	: 8,325 – 8,475
Support	: 7,975 – 8,025
Cut loss	: 7,950



PTPP

PP (Persero) Tbk.



(PTPP). Price closed bullish after touching support area. Price has the opportunity strengthen to the nearest resistance. Stochastic is golden cross, MACD histogram is moving bearish (line is sloping) and volume is increasing. Confirm buy if the next candle returns bullish or buy on support if it goes down first. Be careful if you fail to stay above the support level or become a support breakdown. **(Trading Buy)**

TRADING STRATEGY:

Target Price:

The price has a bullish opportunity to test the resistance level 452. If it breaks level 452 then the price will go to level 460. We recommend to be careful if the price fails to break through or turn around the support area.

Stop Loss:

To minimize the risk of loss, we recommend placing a stop loss at level 432.

Entry Buy	: 436 – 444
Target Price	: 452 – 460
Support	: 434 – 436
Cut loss	: 432



Forecast – Technical Analysis

Ticker	MA5	RSI Rec	MACD Trend	Recomm.	Pivot Point	Support 1	Support 2	Resistance 1	Resistance 2	Stop Loss Level
JCI	Positive	Trading	Positive	Spec. Buy	7,675	7,625	7,550	7,725	7,775	7,425
ACES	Positive	Trading	Negative	Hold	915	910	895	930	935	885
ADRO	Positive	Trading	Negative	Hold	3,690	3,645	3,610	3,725	3,770	3,555
AKRA	Positive	Oversold	Negative	Spec. Buy	1,380	1,360	1,340	1,400	1,420	1,320
AMMN	Positive	Oversold	Positive	Buy	9,175	9,050	8,800	9,425	9,550	8,675
AMRT	Negative	Overbought	Positive	Sell	3,530	3,475	3,410	3,595	3,650	3,355
ANTM	Positive	Trading	Negative	Hold	1,610	1,575	1,560	1,625	1,660	1,535
ARTO	Positive	Trading	Negative	Hold	2,855	2,810	2,715	2,950	2,995	2,675
ASII	Negative	Trading	Positive	Hold	5,225	5,200	5,100	5,325	5,350	5,025
BBCA	Positive	Trading	Positive	Spec. Buy	10,725	10,600	10,500	10,825	10,950	10,325
BBNI	Positive	Trading	Positive	Spec. Buy	5,575	5,450	5,325	5,700	5,825	5,225
BBRI	Positive	Oversold	Negative	Spec. Buy	4,760	4,720	4,670	4,810	4,850	4,600
BBTN	Positive	Trading	Positive	Spec. Buy	1,455	1,440	1,415	1,480	1,495	1,395
BMRI	Positive	Trading	Positive	Spec. Buy	6,950	6,825	6,675	7,100	7,225	6,575
BRIS	Positive	Trading	Negative	Hold	3,005	2,965	2,905	3,065	3,105	2,860
BRPT	Negative	Trading	Positive	Hold	1,005	995	980	1,020	1,030	965
BUKA	Positive	Trading	Negative	Hold	131	128	121	138	141	119
CPIN	Negative	Overbought	Positive	Sell	5,125	5,075	4,990	5,200	5,250	4,915
ESSA	Negative	Trading	Negative	Sell	955	940	935	960	975	920
EXCL	Positive	Trading	Negative	Hold	2,270	2,240	2,220	2,290	2,320	2,185
GGRM	Positive	Oversold	Negative	Spec. Buy	15,075	14,925	14,775	15,225	15,375	14,550
GOTO	Negative	Overbought	Positive	Sell	69	68	66	71	72	65
HRUM	Positive	Trading	Negative	Hold	1,270	1,240	1,210	1,300	1,330	1,190
ICBP	Negative	Trading	Negative	Sell	12,600	12,550	12,450	12,700	12,750	12,250
INCO	Positive	Trading	Negative	Hold	4,060	3,995	3,950	4,105	4,170	3,890
INDF	Negative	Overbought	Positive	Sell	7,475	7,450	7,325	7,600	7,625	7,225
INKP	Positive	Oversold	Negative	Spec. Buy	8,100	8,000	7,875	8,225	8,325	7,750
INTP	Negative	Overbought	Positive	Sell	7,500	7,375	7,175	7,700	7,825	7,050
ISAT	Positive	Oversold	Negative	Spec. Buy	2,240	2,175	2,100	2,315	2,380	2,065
ITMG	Positive	Oversold	Negative	Spec. Buy	25,450	25,350	25,100	25,700	25,800	24,725
JSMR	Positive	Oversold	Negative	Spec. Buy	4,690	4,660	4,610	4,740	4,770	4,540
KLBF	Positive	Oversold	Negative	Spec. Buy	1,625	1,615	1,595	1,645	1,655	1,570
MAPI	Positive	Trading	Negative	Hold	1,715	1,675	1,655	1,735	1,775	1,630
MBMA	Positive	Oversold	Negative	Spec. Buy	530	525	515	540	545	510
MDKA	Positive	Trading	Negative	Hold	2,425	2,390	2,335	2,480	2,515	2,300
MEDC	Positive	Trading	Negative	Hold	1,265	1,240	1,215	1,290	1,315	1,195
MTEL	Negative	Trading	Positive	Hold	640	635	625	650	655	615
PGAS	Positive	Trading	Positive	Spec. Buy	1,500	1,485	1,480	1,505	1,520	1,455
PGEO	Positive	Trading	Negative	Hold	1,120	1,110	1,100	1,130	1,140	1,080
PTBA	Positive	Oversold	Negative	Spec. Buy	2,875	2,840	2,805	2,910	2,945	2,765
SIDO	Positive	Oversold	Negative	Spec. Buy	615	605	600	620	630	590
SMGR	Positive	Overbought	Positive	Hold	4,270	4,125	3,990	4,405	4,550	3,930
TLKM	Positive	Trading	Negative	Hold	2,920	2,900	2,880	2,940	2,960	2,835
TOWR	Positive	Oversold	Negative	Spec. Buy	785	775	760	800	810	750
UNTR	Negative	Trading	Positive	Hold	26,725	26,550	26,250	27,025	27,200	25,850
UNVR	Positive	Oversold	Negative	Spec. Buy	2,065	2,015	1,975	2,105	2,155	1,945



Kiwoom Research Team



Sukarno Alat

Head of Equity Research
sukarno@kiwoom.co.id | 021 5010 5800



Abdul Azis Setyo W.

Equity Research Analyst
azis@kiwoom.co.id | 021 5010 5800



Vicky Rosalinda

Equity Research Analyst
vicky.rosalinda@kiwoom.co.id | 021 5010 5800



Miftahul Khaer

Equity Research Analyst
khaer.miftahul@kiwoom.co.id | 021 5010 5800



HEAD OFFICE

Treasury Tower 27th Floor Unit A, District 8 Kawasan SCBD Lot 28,
Jl.Jend.Sudirman Kav 52-53, Jakarta Selatan 12190

Tel : (021) 5010 5800
Fax : (021) 5010 5820
Email : cs@kiwoom.co.id

Terdaftar dan
diawasi oleh :  OTORITAS
JASA
KEUANGAN

OTHER DISCLOSURES

All Kiwoom's research reports made available to clients are simultaneously available on our own website <http://www.kiwoom.co.id/>. Not all research content is redistributed, e-mailed or made available to third-party aggregators. For all research reports available on a particular stock, please contact your sales representative. Any data discrepancies in this report could be the result of different calculations and/or adjustments.

DISCLAIMER

This report has been prepared and issued by PT Kiwoom Sekuritas Indonesia. Information has been obtained from sources believed to be reliable but Kiwoom Securities do not warrant its completeness or accuracy. Forward-looking information or statements in this report contain information that is based on forecast of future results, estimates of amounts not yet determinable, assumptions, and therefore involve known and unknown risks and uncertainties which may cause the actual results, performance or achievements of their subject matter to be materially different from current expectations. To the fullest extent allowed by law, PT Kiwoom Sekuritas Indonesia shall not be liable for any direct, indirect or consequential losses, loss of profits, damages, costs or expenses incurred or suffered by any person or organization arising from reliance on or use of any information contained on this report. The information that we provide should not be construed in any manner whatsoever as, personalized advice. No mention of a particular security in this report constitutes a recommendation to buy, sell or hold that or any security, or that any particular security, portfolio of securities, transaction or investment strategy is suitable for any specific person. This report is being supplied to you solely for your information and may not be reproduced by, further distributed to or published in whole or in part by, any other person.