



### JCI Range Today

6,656 – 6,676 (Support), 6,791 – 6,811 (Resistance)



**Jakarta Composite Index** closed lower and breakdown support. Indicator from stochastic is bearish, MACD histogram is moving bearish (line is sloping) and volume is decreasing. Bearish scenario: If it moves bearish, JCI is expected to weaken to the support range 6,656 – 6,676. Bullish scenario: If JCI is able to move bullish, JCI has the opportunity strengthen to the resistance range 6,791 – 6,811.

### Stock Pick Today:



BSDE



DMMX



ICBP



TLKM



## BSDE

Bumi Serpong Damai Tbk.



**(BSDE).** Price closed higher with bullish candle. Price has the opportunity strengthen to the nearest resistance. Stochastic is golden cross potential, MACD histogram is moving negative direction (line is death cross potential) and volume is decreasing. Confirm buy if the next candle returns bullish or buy on support if it goes down first. Be careful if you fail to stay above the support level or become a support breakdown.  
**(Trading Buy)**

### **TRADING STRATEGY:**

#### **Target Price:**

The price has a bullish opportunity to test the resistance level 940. If it breaks level 940 then the price will go to level 960. We recommend to be careful if the price fails to break through or turn around the support area.

#### **Stop Loss:**

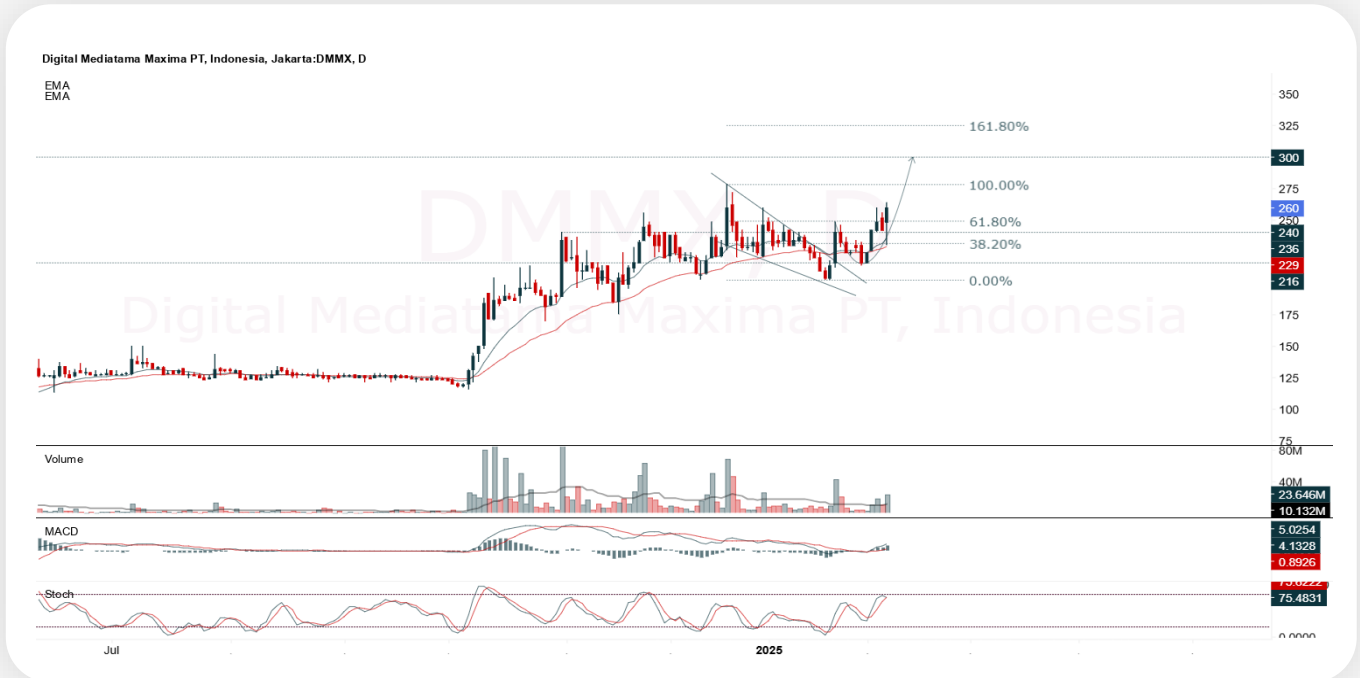
To minimize the risk of loss, we recommend placing a stop loss at level 890.

Entry Buy	: 900 – 920
Target Price	: 940 – 960
Support	: 895 – 900
Cut loss	: 890



## DMMX

Digital Mediatama Maxima Tbk.



**(DMMX).** Price closed higher and breakup harmonic resistance (FR 61.80%). Price has the opportunity strengthen to the next resistance. Stochastic is death cross, MACD histogram is moving positive (line is bullish) and volume is increasing. Confirm buy if the next candle returns bullish or buy on support if it goes down first. Be careful if you fail to stay above the support level or become a support breakdown. **(Trading Buy)**

### **TRADING STRATEGY:**

#### **Target Price:**

The price has a bullish opportunity to test the resistance level 266. If it breaks level 266 then the price will go to level 272. We recommend to be careful if the price fails to break through or turn around the support area.

#### **Stop Loss:**

To minimize the risk of loss, we recommend placing a stop loss at level 250.

- Entry Buy : 256 – 260
- Target Price : 266 – 272
- Support : 252 – 256
- Cut loss : 250



## ICBP

Indofood CBP sukses Makmur Tbk.



**(ICBP).** Price closed higher and breakout resistance. Price has the opportunity strengthen to the next resistance. Stochastic is golden cross, MACD histogram is moving positive (line is bullish) and volume is increasing. Confirm buy if the next candle returns bullish or buy on support if it goes down first. Be careful if you fail to stay above the support level or become a support breakdown. **(Trading Buy)**

### **TRADING STRATEGY:**

#### **Target Price:**

The price has a bullish opportunity to test the resistance level 11,575. If it breaks level 11,575 then the price will go to level 11,775. We recommend to be careful if the price fails to break through or turn around the support area.

#### **Stop Loss:**

To minimize the risk of loss, we recommend placing a stop loss at level 11,050.

- Entry Buy : 11,175 – 11,375
- Target Price : 11,575 – 11,775
- Support : 11,075 – 11,175
- Cut loss : 11,050



## TLKM

Telkom Indonesia (Persero) Tbk.



**(TLKM)**. Price closed higher and breakout resistance. Price has the opportunity strengthen to the next resistance. Stochastic is golden cross, MACD histogram is moving bearish (line is sloping) and volume is increasing. Confirm buy if the next candle returns bullish or buy on support if it goes down first. Be careful if you fail to stay above the support level or become a support breakdown. **(Trading Buy)**

### **TRADING STRATEGY:**

#### **Target Price:**

The price has a bullish opportunity to test the resistance level 2,640. If it breaks level 2,640 then the price will go to level 2,690. We recommend to be careful if the price fails to break through or turn around the support area.

#### **Stop Loss:**

To minimize the risk of loss, we recommend placing a stop loss at level 2,510.

Entry Buy : 2,540 – 2,590  
Target Price : 2,640 – 2,690  
Support : 2,520 – 2,540  
Cut loss : 2,510



## Forecast – Technical Analysis

Ticker	MA5	RSI Rec	MACD Trend	Recomm.	Pivot Point	Support 1	Support 2	Resistance 1	Resistance 2	Stop Loss Level
JCI	Positive	Oversold	Negative	Spec. Buy	6,725	6,700	6,625	6,800	6,850	6,525
ACES	Positive	Trading	Positive	Spec. Buy	740	730	720	750	760	705
ADMR	Positive	Oversold	Negative	Spec. Buy	880	860	845	895	915	830
ADRO	Positive	Oversold	Positive	Buy	2,270	2,250	2,210	2,310	2,330	2,175
AKRA	Negative	Trading	Negative	Sell	1,120	1,100	1,060	1,160	1,180	1,045
AMMN	Positive	Oversold	Negative	Spec. Buy	7,000	6,875	6,725	7,150	7,275	6,625
AMRT	Negative	Trading	Positive	Hold	2,900	2,855	2,800	2,955	3,000	2,755
ANTM	Negative	Trading	Negative	Sell	1,410	1,380	1,340	1,450	1,480	1,315
ARTO	Positive	Oversold	Negative	Spec. Buy	2,160	2,115	2,070	2,205	2,250	2,035
ASII	Positive	Oversold	Negative	Spec. Buy	4,615	4,560	4,475	4,700	4,755	4,410
BBCA	Positive	Trading	Negative	Hold	9,125	8,900	8,600	9,425	9,650	8,475
BBNI	Positive	Oversold	Negative	Spec. Buy	4,260	4,165	4,070	4,355	4,450	4,005
BBRI	Positive	Trading	Negative	Hold	3,995	3,955	3,905	4,045	4,085	3,845
BBTN	Positive	Oversold	Negative	Spec. Buy	970	955	945	980	995	930
BMRI	Positive	Oversold	Negative	Spec. Buy	5,075	4,975	4,865	5,175	5,275	4,790
BRIS	Negative	Overbought	Positive	Sell	2,960	2,865	2,780	3,045	3,140	2,735
BRPT	Positive	Oversold	Negative	Spec. Buy	830	805	775	860	885	765
CPIN	Positive	Trading	Negative	Hold	4,600	4,545	4,480	4,665	4,720	4,410
CTRA	Positive	Trading	Negative	Hold	900	860	820	940	980	810
ESSA	Positive	Trading	Negative	Hold	820	800	770	850	870	755
EXCL	Negative	Trading	Positive	Hold	2,290	2,275	2,260	2,305	2,320	2,225
GOTO	Negative	Trading	Negative	Sell	83	81	80	84	86	78
ICBP	Positive	Trading	Positive	Spec. Buy	11,175	10,925	10,575	11,525	11,775	10,400
INCO	Positive	Oversold	Negative	Spec. Buy	2,880	2,820	2,740	2,960	3,020	2,700
INDF	Positive	Trading	Positive	Spec. Buy	7,575	7,475	7,325	7,725	7,825	7,200
INKP	Positive	Oversold	Negative	Spec. Buy	6,125	6,050	5,975	6,200	6,275	5,875
ISAT	Positive	Oversold	Negative	Spec. Buy	2,205	2,175	2,135	2,245	2,275	2,100
ITMG	Positive	Trading	Negative	Hold	25,550	25,125	24,650	26,025	26,450	24,275
JPFA	Negative	Overbought	Positive	Sell	2,055	2,030	1,975	2,110	2,135	1,945
JSMR	Positive	Oversold	Negative	Spec. Buy	4,095	4,040	3,945	4,190	4,245	3,885
KLBF	Positive	Trading	Positive	Spec. Buy	1,285	1,250	1,205	1,330	1,365	1,190
MAPA	Positive	Oversold	Negative	Spec. Buy	895	875	850	920	940	835
MAPI	Positive	Trading	Negative	Hold	1,285	1,250	1,225	1,310	1,345	1,205
MBMA	Positive	Oversold	Negative	Spec. Buy	374	365	352	387	396	346
MDKA	Positive	Oversold	Negative	Spec. Buy	1,435	1,410	1,380	1,465	1,490	1,355
MEDC	Positive	Oversold	Negative	Spec. Buy	1,025	1,015	990	1,050	1,060	975
PGAS	Positive	Trading	Negative	Hold	1,565	1,540	1,500	1,605	1,630	1,480
PGEO	Positive	Trading	Negative	Hold	895	885	865	915	925	850
PTBA	Positive	Trading	Positive	Spec. Buy	2,655	2,610	2,555	2,710	2,755	2,515
SIDO	Positive	Trading	Negative	Hold	560	555	545	570	575	535
SMGR	Positive	Oversold	Positive	Buy	2,725	2,680	2,615	2,790	2,835	2,575
SMRA	Positive	Oversold	Negative	Spec. Buy	423	411	401	433	445	394
TLKM	Positive	Trading	Negative	Hold	2,560	2,530	2,480	2,610	2,640	2,445
TOWR	Positive	Oversold	Negative	Spec. Buy	625	620	610	635	640	600
UNTR	Positive	Trading	Negative	Hold	24,500	24,200	23,650	25,050	25,350	23,300
UNVR	Positive	Oversold	Negative	Spec. Buy	1,470	1,425	1,385	1,510	1,555	1,360



## Kiwoom Research Team



### Sukarno Alatas

Head of Equity Research

[sukarno@kiwoom.co.id](mailto:sukarno@kiwoom.co.id) | 021 5010 5800



### Abdul Azis Setyo W.

Equity Research Analyst

[azis@kiwoom.co.id](mailto:azis@kiwoom.co.id) | 021 5010 5800



### Miftahul Khaer

Equity Research Analyst

[khaer.miftahul@kiwoom.co.id](mailto:khaer.miftahul@kiwoom.co.id) | 021 5010 5800



#### HEAD OFFICE

Treasury Tower 27th Floor Unit A, District 8 Kawasan SCBD Lot 28,  
Jl.Jend.Sudirman Kav 52-53, Jakarta Selatan 12190

Tel : (021) 5010 5800

Fax : (021) 5010 5820

Email : [cs@kiwoom.co.id](mailto:cs@kiwoom.co.id)

PT Kiwoom Sekuritas Indonesia is licensed and supervised by the Financial Services Authority (OJK)

#### OTHER DISCLOSURES

All Kiwoom's research reports made available to clients are simultaneously available on our own website <http://www.kiwoom.co.id/>. Not all research content is redistributed, e-mailed or made available to third-party aggregators. For all research reports available on a particular stock, please contact your sales representative. Any data discrepancies in this report could be the result of different calculations and/or adjustments.

#### DISCLAIMER

This report has been prepared and issued by PT Kiwoom Sekuritas Indonesia. Information has been obtained from sources believed to be reliable but Kiwoom Securities do not warrant its completeness or accuracy. Forward-looking information or statements in this report contain information that is based on forecast of future results, estimates of amounts not yet determinable, assumptions, and therefore involve known and unknown risks and uncertainties which may cause the actual results, performance or achievements of their subject matter to be materially different from current expectations. To the fullest extent allowed by law, PT Kiwoom Sekuritas Indonesia shall not be liable for any direct, indirect or consequential losses, loss of profits, damages, costs or expenses incurred or suffered by any person or organization arising from reliance on or use of any information contained on this report. The information that we provide should not be construed in any manner whatsoever as, personalized advice. No mention of a particular security in this report constitutes a recommendation to buy, sell or hold that or any security, or that any particular security, portfolio of securities, transaction or investment strategy is suitable for any specific person. This report is being supplied to you solely for your information and may not be reproduced by, further distributed to or published in whole or in part by, any other person.