



### JCI Range Today

6,742 – 6,758 (Support), 6,836 – 6,852 (Resistance)



**Jakarta Composite Index** closed positive and breakup dynamic resistance at EMA 10. Indicator from stochastic is death cross, MACD histogram is moving positive (line is bullish) and volume is decreasing. Bearish scenario: If it moves bearish, JCI is expected to weaken to the support range 6,742 – 6,758. Bullish scenario: If JCI is able to move bullish, JCI has the opportunity strengthen to the resistance range 6,836 – 6,852.

### Stock Pick Today:



**BFIN**



**DSNG**



**JSMR**



**SMDR**



## BFIN

BFI Finance Indonesia Tbk.



**(BFIN).** Price closed higher and breakout resistance. Price has the opportunity strengthen to the next resistance. Stochastic is still bullish, MACD histogram is moving positive (line is bullish) and volume is decreasing. Confirm buy if the next candle returns bullish or buy on support if it goes down first. Be careful if you fail to stay above the support level or become a support breakdown. **(Trading Buy)**

### **TRADING STRATEGY:**

#### **Target Price:**

The price has a bullish opportunity to test the resistance level 905. If it breaks level 905 then the price will go to level 920. We recommend to be careful if the price fails to break through or turn around the support area.

#### **Stop Loss:**

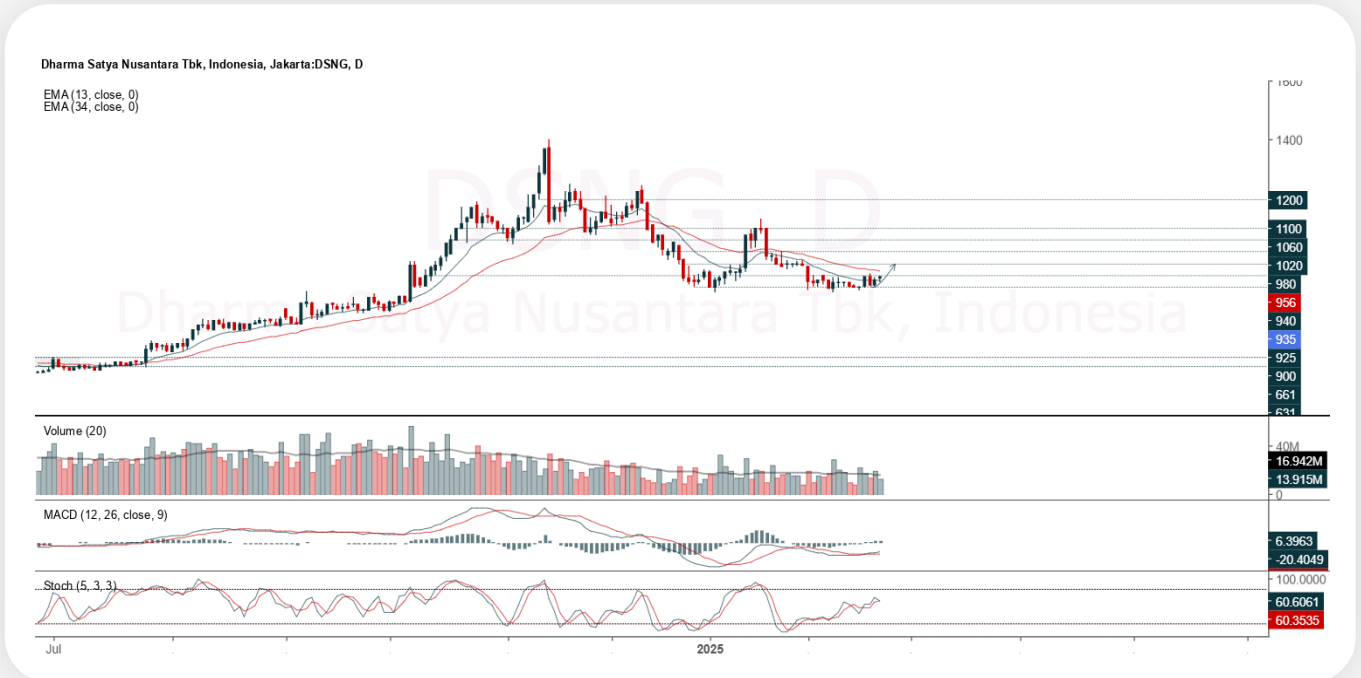
To minimize the risk of loss, we recommend placing a stop loss at level 860.

Entry Buy	: 870 – 885
Target Price	: 905 – 920
Support	: 865 – 870
Cut loss	: 860



## DSNG

Dharma Satya Nusantara Tbk.



**(DSNG).** Price closed higher with swing low. Price has the opportunity strengthen to the nearest resistance. Stochastic is still bullish, MACD histogram is moving positive (line is bullish) and volume is decreasing. Confirm buy if the next candle returns bullish or buy on support if it goes down first. Be careful if you fail to stay above the support level or become a support breakdown. **(Trading Buy)**

### **TRADING STRATEGY:**

#### **Target Price:**

The price has a bullish opportunity to test the resistance level 955. If it breaks level 955 then the price will go to level 970. We recommend to be careful if the price fails to break through or turn around the support area.

#### **Stop Loss:**

To minimize the risk of loss, we recommend placing a stop loss at level 910.

Entry Buy : 920 – 935  
 Target Price : 955 – 970  
 Support : 915 – 920  
 Cut loss : 910



## JSMR

Jasa Marga (Persero) Tbk.



**(JSMR).** Price closed higher and breakout resistance. Price has the opportunity strengthen to the next resistance. Stochastic is still bullish, MACD histogram is moving positive (line is bullish) and volume is decreasing. Confirm buy if the next candle returns bullish or buy on support if it goes down first. Be careful if you fail to stay above the support level or become a support breakdown. **(Trading Buy)**

### **TRADING STRATEGY:**

#### **Target Price:**

The price has a bullish opportunity to test the resistance level 4,240. If it breaks level 4,240 then the price will go to level 4,310. We recommend to be careful if the price fails to break through or turn around the support area.

#### **Stop Loss:**

To minimize the risk of loss, we recommend placing a stop loss at level 4,050.

Entry Buy	: 4,090 – 4,160
Target Price	: 4,240 – 4,310
Support	: 4,060 – 4,090
Cut loss	: 4,050



## SMDR

Samudera Indonesia Tbk.



**(SMDR).** Price closed higher and breakout resistance. Price has the opportunity strengthen to the next resistance. Stochastic is golden cross, MACD histogram is moving positive (line is bullish) and volume is increasing. Confirm buy if the next candle returns bullish or buy on support if it goes down first. Be careful if you fail to stay above the support level or become a support breakdown. **(Trading Buy)**

### **TRADING STRATEGY:**

#### **Target Price:**

The price has a bullish opportunity to test the resistance level 270. If it breaks level 270 then the price will go to level 274. We recommend to be careful if the price fails to break through or turn around the support area.

#### **Stop Loss:**

To minimize the risk of loss, we recommend placing a stop loss at level 256.

Entry Buy : 260 – 264  
Target Price : 270 – 274  
Support : 258 – 260  
Cut loss : 256



## Forecast – Technical Analysis

Ticker	MA5	RSI Rec	MACD Trend	Recomm.	Pivot Point	Support		Resistance		Stop Loss Level
						1	2	1	2	
JCI	Negative	Trading	Positive	Hold	6,800	6,775	6,725	6,825	6,850	6,625
ACES	Positive	Trading	Positive	Spec. Buy	775	765	755	785	795	740
ADMR	Negative	Oversold	Positive	Spec. Buy	825	810	795	840	855	780
ADRO	Positive	Oversold	Positive	Buy	2,200	2,160	2,140	2,220	2,260	2,110
AKRA	Negative	Overbought	Positive	Sell	1,230	1,220	1,200	1,250	1,260	1,180
AMMN	Negative	Trading	Positive	Hold	7,175	7,100	6,900	7,375	7,450	6,800
AMRT	Positive	Oversold	Negative	Spec. Buy	2,525	2,475	2,405	2,595	2,645	2,365
ANTM	Negative	Overbought	Positive	Sell	1,655	1,620	1,590	1,685	1,720	1,565
ARTO	Negative	Oversold	Positive	Spec. Buy	2,005	1,975	1,935	2,045	2,075	1,905
ASII	Negative	Trading	Positive	Hold	4,725	4,645	4,525	4,845	4,925	4,455
BBCA	Negative	Trading	Positive	Hold	8,975	8,950	8,900	9,025	9,050	8,750
BBNI	Negative	Trading	Positive	Hold	4,365	4,285	4,225	4,425	4,505	4,160
BBRI	Negative	Trading	Negative	Sell	3,900	3,870	3,840	3,930	3,960	3,780
BBTN	Positive	Oversold	Positive	Buy	945	935	915	965	975	905
BMRI	Negative	Oversold	Negative	Spec. Buy	5,050	4,990	4,945	5,100	5,150	4,870
BRIS	Negative	Trading	Negative	Sell	2,975	2,915	2,845	3,045	3,105	2,800
BRPT	Negative	Trading	Positive	Hold	845	835	820	860	870	810
CPIN	Negative	Trading	Positive	Hold	4,630	4,590	4,540	4,680	4,720	4,470
CTRA	Positive	Oversold	Negative	Spec. Buy	855	840	825	870	885	810
ESSA	Positive	Oversold	Negative	Spec. Buy	790	780	765	805	815	755
EXCL	Positive	Trading	Negative	Hold	2,260	2,250	2,240	2,270	2,280	2,205
GOTO	Positive	Trading	Negative	Hold	80	78	76	82	84	75
ICBP	Negative	Trading	Positive	Hold	11,500	11,350	11,150	11,700	11,850	11,000
INCO	Negative	Trading	Positive	Hold	3,025	2,955	2,895	3,085	3,155	2,850
INDF	Negative	Trading	Positive	Hold	7,850	7,700	7,575	7,975	8,125	7,450
INKP	Negative	Trading	Positive	Hold	6,325	6,200	6,100	6,425	6,550	6,000
ISAT	Negative	Oversold	Negative	Spec. Buy	1,755	1,715	1,680	1,790	1,830	1,655
ITMG	Positive	Trading	Negative	Hold	25,250	25,125	24,950	25,425	25,550	24,575
JPFA	Positive	Trading	Negative	Hold	1,980	1,960	1,935	2,005	2,025	1,905
JSMR	Negative	Trading	Positive	Hold	4,125	4,075	4,015	4,185	4,235	3,950
KLBF	Positive	Trading	Negative	Hold	1,220	1,205	1,195	1,230	1,245	1,175
MAPA	Positive	Oversold	Negative	Spec. Buy	830	815	800	845	860	785
MAPI	Negative	Overbought	Positive	Sell	1,425	1,375	1,340	1,460	1,510	1,320
MBMA	Positive	Oversold	Positive	Buy	381	372	367	386	395	361
MDKA	Negative	Overbought	Positive	Sell	1,810	1,790	1,745	1,855	1,875	1,720
MEDC	Negative	Trading	Positive	Hold	1,060	1,045	1,025	1,080	1,095	1,010
PGAS	Negative	Trading	Positive	Hold	1,670	1,655	1,630	1,695	1,710	1,605
PGEO	Negative	Trading	Positive	Hold	930	905	885	950	975	870
PTBA	Positive	Trading	Positive	Spec. Buy	2,665	2,635	2,615	2,685	2,715	2,575
SIDO	Positive	Trading	Positive	Spec. Buy	600	595	590	605	610	580
SMGR	Negative	Trading	Positive	Hold	2,785	2,705	2,645	2,845	2,925	2,605
SMRA	Negative	Oversold	Positive	Spec. Buy	415	410	407	418	423	401
TLKM	Negative	Trading	Positive	Hold	2,660	2,635	2,610	2,685	2,710	2,570
TOWR	Positive	Oversold	Negative	Spec. Buy	600	595	580	615	620	575
UNTR	Positive	Trading	Positive	Spec. Buy	24,700	24,450	24,250	24,900	25,150	23,900
UNVR	Positive	Oversold	Negative	Spec. Buy	1,320	1,285	1,255	1,350	1,385	1,235



## Kiwoom Research Team



### Sukarno Alatas

Head of Equity Research

[sukarno@kiwoom.co.id](mailto:sukarno@kiwoom.co.id) | 021 5010 5800



### Abdul Azis Setyo W.

Equity Research Analyst

[azis@kiwoom.co.id](mailto:azis@kiwoom.co.id) | 021 5010 5800



### Miftahul Khaer

Equity Research Analyst

[khaer.miftahul@kiwoom.co.id](mailto:khaer.miftahul@kiwoom.co.id) | 021 5010 5800



### HEAD OFFICE

Treasury Tower 27th Floor Unit A, District 8 Kawasan SCBD Lot 28,  
Jl.Jend.Sudirman Kav 52-53, Jakarta Selatan 12190

Tel : (021) 5010 5800

Fax : (021) 5010 5820

Email : [cs@kiwoom.co.id](mailto:cs@kiwoom.co.id)

PT Kiwoom Sekuritas Indonesia is licensed and supervised by the Financial Services Authority (OJK)

### OTHER DISCLOSURES

All Kiwoom's research reports made available to clients are simultaneously available on our own website <http://www.kiwoom.co.id/>. Not all research content is redistributed, e-mailed or made available to third-party aggregators. For all research reports available on a particular stock, please contact your sales representative. Any data discrepancies in this report could be the result of different calculations and/or adjustments.

### DISCLAIMER

This report has been prepared and issued by PT Kiwoom Sekuritas Indonesia. Information has been obtained from sources believed to be reliable but Kiwoom Securities do not warrant its completeness or accuracy. Forward-looking information or statements in this report contain information that is based on forecast of future results, estimates of amounts not yet determinable, assumptions, and therefore involve known and unknown risks and uncertainties which may cause the actual results, performance or achievements of their subject matter to be materially different from current expectations. To the fullest extent allowed by law, PT Kiwoom Sekuritas Indonesia shall not be liable for any direct, indirect or consequential losses, loss of profits, damages, costs or expenses incurred or suffered by any person or organization arising from reliance on or use of any information contained on this report. The information that we provide should not be construed in any manner whatsoever as, personalized advice. No mention of a particular security in this report constitutes a recommendation to buy, sell or hold that or any security, or that any particular security, portfolio of securities, transaction or investment strategy is suitable for any specific person. This report is being supplied to you solely for your information and may not be reproduced by, further distributed to or published in whole or in part by, any other person.