



HMSP

H.M. Sampoerna Tbk.



(HMSP). Price has the potential to test the nearest resistance to continue the uptrend. Price is supported by the golden cross indicator and bullish MACD line (histogram moving positive) along with increasing volume.

ADVICE: Buy on break 920 or trading buy.

Entry Buy	Target Price	Support	Cut Loss
880 – 910	950 – 985	865 – 880	855



MAPI

Mitra Adiperkasa Tbk.



(MAPI). Price successfully rebounds after managing to hold at the support area. Price is supported by the MACD line still moving bullish (histogram moving positive).

ADVICE: Accumulate buy or trading buy.

Entry Buy	Target Price	Support	Cut Loss
1,275 – 1,320	1,375 – 1,430	1,250 – 1,275	1,240



MEDC

Medco Energi Internasional Tbk.



(MEDC). Price breaks out of the trendline resistance and has the potential to reach the nearest resistance. Price is supported by a bullish stochastic indicator and MACD line with a potential golden cross (histogram moving toward positive) along with an increasing volume trend.

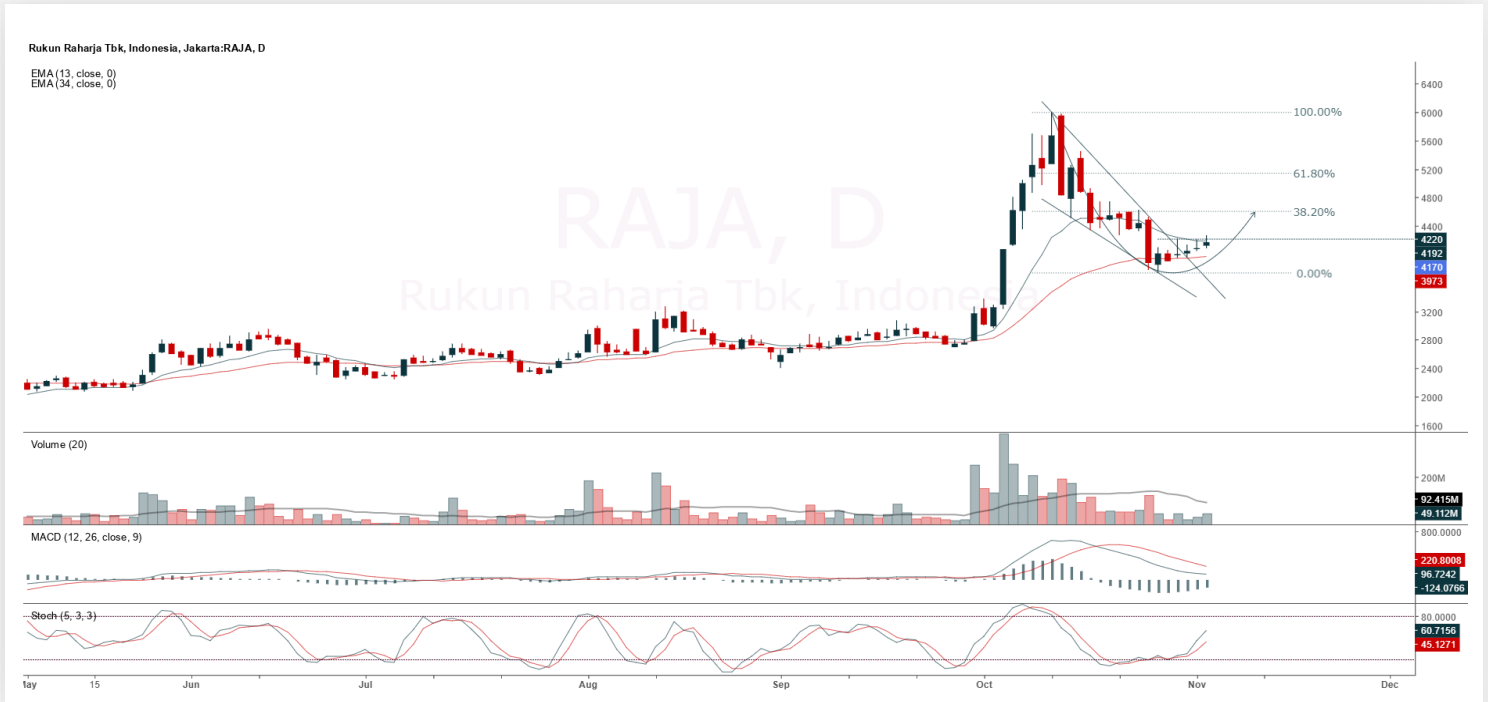
ADVICE: Accumulate buy or trading buy.

Entry Buy	Target Price	Support	Cut Loss
1,330 – 1,380	1,440 – 1,500	1,305 – 1,330	1,295



RAJA

Rukun Raharja Tbk.



(RAJA). Price has the potential to test the nearest resistance to continue the uptrend. Price is supported by a bullish stochastic indicator and MACD line with a potential golden cross (histogram moving toward positive) along with an increasing volume trend.

ADVICE: Buy on break 4,220 or trading buy.

Entry Buy	Target Price	Support	Cut Loss
4,030 – 4,170	4,340 – 4,500	3,960 – 4,030	3,940



Forecast – Technical Analysis

Ticker	MA5	RSI Rec	MACD Trend	Recomm.	Pivot Point	Support 1	Support 2	Resistance 1	Resistance 2	Stop Loss Level
JCI	Negative	Trading	Negative	Sell	8,275	8,225	8,175	8,300	8,350	8,050
AADI	Negative	Trading	Positive	Hold	8,350	8,250	8,150	8,450	8,550	8,025
ACES	Positive	Trading	Positive	Spec. Buy	443	438	435	446	451	428
ADMIR	Positive	Trading	Negative	Hold	1,375	1,360	1,320	1,415	1,430	1,300
ADRO	Negative	Trading	Positive	Hold	1,920	1,890	1,850	1,960	1,990	1,825
AKRA	Negative	Overbought	Positive	Sell	1,260	1,250	1,230	1,280	1,290	1,210
AMMN	Negative	Trading	Negative	Sell	7,000	6,900	6,825	7,075	7,175	6,725
AMRT	Positive	Oversold	Negative	Spec. Buy	1,920	1,880	1,855	1,945	1,985	1,825
ANTM	Positive	Oversold	Negative	Spec. Buy	3,035	2,960	2,885	3,110	3,185	2,840
ASII	Positive	Trading	Positive	Spec. Buy	6,300	6,250	6,175	6,375	6,425	6,100
BBCA	Negative	Overbought	Positive	Sell	8,650	8,625	8,575	8,700	8,725	8,450
BBNI	Negative	Overbought	Positive	Sell	4,455	4,400	4,375	4,480	4,535	4,310
BBRI	Negative	Trading	Positive	Hold	4,005	3,960	3,925	4,040	4,085	3,865
BBTN	Negative	Trading	Positive	Hold	1,215	1,205	1,195	1,225	1,235	1,175
BMRI	Negative	Overbought	Positive	Sell	4,750	4,710	4,680	4,780	4,820	4,610
BRPT	Negative	Trading	Negative	Sell	3,600	3,470	3,370	3,700	3,830	3,320
BUMI	Positive	Trading	Positive	Spec. Buy	142	137	135	144	149	132
CPIN	Positive	Trading	Negative	Hold	4,765	4,705	4,665	4,805	4,865	4,595
CTRA	Negative	Trading	Positive	Hold	895	885	880	900	910	865
DSSA	Negative	Trading	Negative	Sell	89,650	86,950	84,025	92,575	95,275	82,775
EMTK	Positive	Trading	Negative	Hold	1,180	1,165	1,140	1,205	1,220	1,125
EXCL	Negative	Trading	Positive	Hold	2,725	2,685	2,665	2,745	2,785	2,625
GOTO	Negative	Trading	Positive	Hold	58	57	55	60	61	54
HEAL	Negative	Trading	Positive	Hold	1,505	1,490	1,465	1,530	1,545	1,440
ICBP	Positive	Oversold	Negative	Spec. Buy	8,525	8,425	8,400	8,550	8,650	8,250
INCO	Negative	Trading	Positive	Hold	4,575	4,530	4,475	4,630	4,675	4,410
INDF	Positive	Trading	Positive	Spec. Buy	7,150	7,050	6,950	7,250	7,350	6,850
INKP	Positive	Trading	Negative	Hold	7,500	7,425	7,325	7,600	7,675	7,200
ISAT	Positive	Trading	Positive	Spec. Buy	1,925	1,900	1,870	1,955	1,980	1,840
ITMG	Negative	Trading	Positive	Hold	23,150	22,950	22,800	23,300	23,500	22,475
JPFA	Positive	Trading	Negative	Hold	2,455	2,395	2,355	2,495	2,555	2,315
KLBF	Positive	Trading	Positive	Spec. Buy	1,230	1,205	1,170	1,265	1,290	1,155
MAPI	Negative	Overbought	Positive	Sell	1,310	1,295	1,265	1,340	1,355	1,245
MBMA	Negative	Trading	Negative	Sell	635	620	605	650	665	595
MDKA	Negative	Trading	Positive	Hold	2,420	2,385	2,350	2,455	2,490	2,310
MEDC	Negative	Trading	Negative	Sell	1,365	1,345	1,325	1,385	1,405	1,305
NCKL	Positive	Trading	Negative	Hold	1,175	1,145	1,110	1,210	1,240	1,095
PGAS	Negative	Trading	Positive	Hold	1,750	1,735	1,715	1,770	1,785	1,690
PGEO	Positive	Oversold	Negative	Spec. Buy	1,280	1,255	1,230	1,305	1,330	1,210
PTBA	Negative	Trading	Positive	Hold	2,395	2,390	2,375	2,410	2,415	2,340
SCMA	Negative	Trading	Negative	Sell	364	355	344	375	384	338
SMGR	Negative	Trading	Positive	Hold	2,785	2,745	2,705	2,825	2,865	2,660
TLKM	Positive	Overbought	Positive	Hold	3,455	3,315	3,225	3,545	3,685	3,175
TOWR	Negative	Trading	Positive	Hold	545	540	525	560	565	520
UNTR	Positive	Trading	Positive	Spec. Buy	27,175	26,925	26,575	27,525	27,775	26,175
UNVR	Negative	Overbought	Positive	Sell	2,685	2,620	2,535	2,770	2,835	2,495



Kiwoom Research Team



HEAD OFFICE

Treasury Tower 27th Floor Unit A, District 8 Kawasan SCBD Lot 28,
Jl.Jend.Sudirman Kav 52-53, Jakarta Selatan 12190

Tel : (021) 5010 5800
Fax : (021) 5010 5820
Email : cs@kiwoom.co.id

PT Kiwoom Sekuritas Indonesia is licensed and supervised by the Financial Services Authority (OJK)

OTHER DISCLOSURES

All Kiwoom's research reports made available to clients are simultaneously available on our own website <http://www.kiwoom.co.id/>. Not all research content is redistributed, e-mailed or made available to third-party aggregators. For all research reports available on a particular stock, please contact your sales representative. Any data discrepancies in this report could be the result of different calculations and/or adjustments.

DISCLAIMER

This report has been prepared and issued by PT Kiwoom Sekuritas Indonesia. Information has been obtained from sources believed to be reliable but Kiwoom Securities do not warrant its completeness or accuracy. Forward-looking information or statements in this report contain information that is based on forecast of future results, estimates of amounts not yet determinable, assumptions, and therefore involve known and unknown risks and uncertainties which may cause the actual results, performance or achievements of their subject matter to be materially different from current expectations. To the fullest extent allowed by law, PT Kiwoom Sekuritas Indonesia shall not be liable for any direct, indirect or consequential losses, loss of profits, damages, costs or expenses incurred or suffered by any person or organization arising from reliance on or use of any information contained on this report. The information that we provide should not be construed in any manner whatsoever as, personalized advice. No mention of a particular security in this report constitutes a recommendation to buy, sell or hold that or any security, or that any particular security, portfolio of securities, transaction or investment strategy is suitable for any specific person. This report is being supplied to you solely for your information and may not be reproduced by, further distributed to or published in whole or in part by, any other person.