



Jakarta Composite Index Range Today

8,210 – 8,170 / 8,050 – 8,000      8,355 / 8,400 – 8,420 / 8,600

Support

Resistance

Published on 06 November 2025



## **Jakarta Composite Index**

JCI appreciated by 76.61 pts / +0.93%, climbing back above the 8,300 level, precisely closing at 8,318.53, recovering after the intraday low once again tested the MA20 support at 8,173.96.

With the newly emerged positive catalyst this morning related to MSCI November index review, **KIWOOM RESEARCH** projects conglomerate stocks to take the spotlight again and lead JCI to test the All Time High resistance at 8,355; a successful breakout above this level could drive JCI further north toward the next TARGET ~8,400.

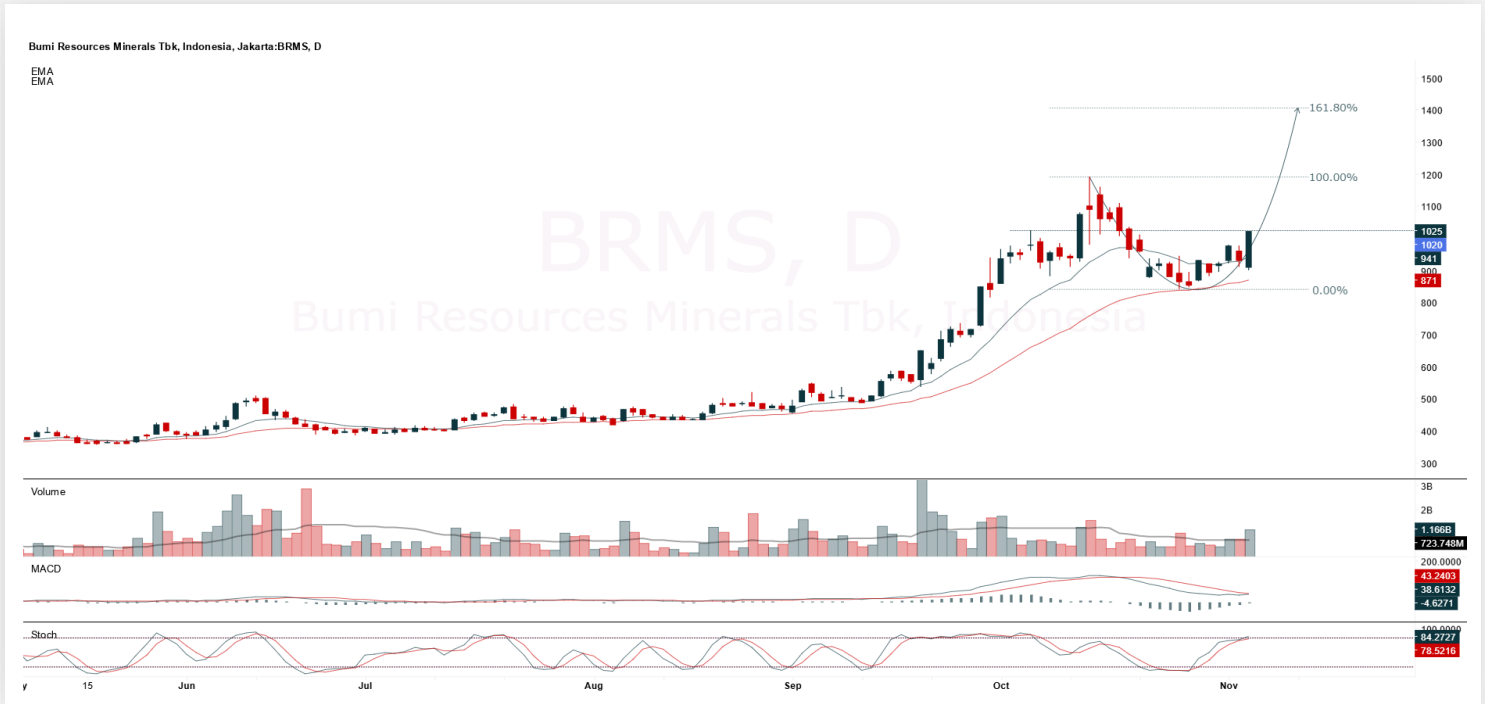
Please note that based on the bullish reversal CUP & HANDLE pattern, the indicated target is 8,600, which may be quite feasible to achieve before the end of the year.

**ADVISE:** AVERAGE UP accordingly, set your Trailing Stop while you let your profit run.



## BRMS

Bumi Resources Minerals Tbk.



**(BRMS).** Price continues to rally and has the potential to reach the nearest resistance. Price is supported by a bullish stochastic indicator and MACD line with a potential golden cross (histogram moving toward positive) along with an increasing volume trend.

**ADVICE:** Accumulate buy or trading buy.

Entry Buy	Target Price	Support	Cut Loss
985 – 1,020	1,060 – 1,100	970 – 985	960



## EMTK

Elang Mahkota Teknologi Tbk.



**(EMTK).** Price successfully rebounds and forms a swing low. Price is supported by the MACD line with a potential golden cross (histogram moving toward positive) and slightly increasing volume.

**ADVICE:** Accumulate or trading buy.

Entry Buy	Target Price	Support	Cut Loss
1,170 – 1,215	1,265 – 1,315	1,150 – 1,170	1,140



## ISAT

Indosat Tbk.



**(ISAT).** Price strengthens again and has the potential to test the nearest resistance. Price is supported by a bullish stochastic indicator and bullish MACD line (histogram moving positive).

**ADVICE:** Accumulate buy or trading buy.

Entry Buy	Target Price	Support	Cut Loss
1,880 – 1,945	2,020 – 2,100	1,845 – 1,880	1,835



## PTRO

Petrosea Tbk.



**(PTRO).** Price rallies and is testing the nearest resistance to continue to an All Time High. Price is supported by a bullish stochastic indicator and MACD line with a potential golden cross (histogram moving toward positive).

**ADVICE:** Buy on break 7,650 or trading buy.

Entry Buy	Target Price	Support	Cut Loss
7,350 – 7,600	7,900 – 8,200	7,225 – 7,350	7,175



## Forecast – Technical Analysis

Ticker	MA5	RSI Rec	MACD Trend	Recomm.	Pivot Point	Support 1	Support 2	Resistance 1	Resistance 2	Stop Loss Level
JCI	Negative	Trading	Positive	Hold	8,250	8,200	8,125	8,325	8,400	8,000
AADI	Negative	Trading	Positive	Hold	8,275	8,175	8,025	8,425	8,525	7,900
ACES	Positive	Trading	Positive	Spec. Buy	441	435	431	445	451	424
ADMIR	Positive	Trading	Negative	Hold	1,365	1,330	1,290	1,405	1,440	1,270
ADRO	Positive	Trading	Positive	Spec. Buy	1,880	1,860	1,830	1,910	1,930	1,805
AKRA	Negative	Trading	Positive	Hold	1,250	1,230	1,200	1,280	1,300	1,180
AMMN	Negative	Trading	Negative	Sell	7,000	6,850	6,650	7,200	7,350	6,550
AMRT	Positive	Trading	Negative	Hold	1,925	1,895	1,875	1,945	1,975	1,845
ANTM	Positive	Oversold	Negative	Spec. Buy	2,960	2,920	2,870	3,010	3,050	2,825
ASII	Positive	Trading	Negative	Hold	6,250	6,175	6,100	6,325	6,400	6,000
BBCA	Negative	Overbought	Positive	Sell	8,650	8,625	8,550	8,725	8,750	8,425
BBNI	Positive	Overbought	Positive	Hold	4,430	4,380	4,330	4,480	4,530	4,265
BBRI	Negative	Trading	Positive	Hold	3,955	3,920	3,875	4,000	4,035	3,815
BBTN	Positive	Trading	Positive	Spec. Buy	1,215	1,210	1,200	1,225	1,230	1,180
BMRI	Negative	Overbought	Positive	Sell	4,730	4,685	4,640	4,775	4,820	4,570
BRPT	Positive	Trading	Negative	Hold	3,510	3,435	3,370	3,575	3,650	3,315
BUMI	Negative	Trading	Positive	Hold	140	137	134	143	146	132
CPIN	Positive	Trading	Negative	Hold	4,770	4,725	4,680	4,815	4,860	4,605
CTRA	Positive	Trading	Positive	Spec. Buy	895	890	880	905	910	865
DSSA	Negative	Trading	Negative	Sell	90,075	88,150	86,175	92,050	93,975	84,875
EMTK	Negative	Trading	Negative	Sell	1,180	1,145	1,100	1,225	1,260	1,080
EXCL	Negative	Trading	Positive	Hold	2,700	2,670	2,620	2,750	2,780	2,580
GOTO	Negative	Overbought	Positive	Sell	60	56	53	63	67	52
HEAL	Positive	Oversold	Positive	Buy	1,465	1,420	1,360	1,525	1,570	1,340
ICBP	Positive	Trading	Negative	Hold	8,600	8,500	8,375	8,725	8,825	8,250
INCO	Negative	Overbought	Positive	Sell	4,585	4,480	4,355	4,710	4,815	4,290
INDF	Positive	Trading	Negative	Hold	7,100	7,050	6,975	7,175	7,225	6,875
INKP	Positive	Trading	Negative	Hold	7,425	7,350	7,275	7,500	7,575	7,150
ISAT	Negative	Trading	Positive	Hold	1,930	1,915	1,885	1,960	1,975	1,855
ITMG	Negative	Overbought	Positive	Sell	23,425	23,175	22,975	23,625	23,875	22,625
JPFA	Positive	Trading	Negative	Hold	2,415	2,370	2,315	2,470	2,515	2,280
KLBF	Positive	Overbought	Positive	Hold	1,270	1,220	1,165	1,325	1,375	1,150
MAPI	Negative	Overbought	Positive	Sell	1,365	1,305	1,240	1,430	1,490	1,220
MBMA	Negative	Trading	Negative	Sell	630	615	590	655	670	580
MDKA	Positive	Trading	Positive	Spec. Buy	2,395	2,360	2,285	2,470	2,505	2,250
MEDC	Negative	Trading	Negative	Sell	1,350	1,335	1,315	1,370	1,385	1,295
NCKL	Positive	Trading	Negative	Hold	1,120	1,105	1,065	1,160	1,175	1,050
PGAS	Negative	Trading	Positive	Hold	1,715	1,705	1,685	1,735	1,745	1,660
PGEO	Positive	Trading	Negative	Hold	1,260	1,240	1,215	1,285	1,305	1,195
PTBA	Negative	Trading	Positive	Hold	2,390	2,375	2,360	2,405	2,420	2,320
SCMA	Negative	Trading	Negative	Sell	359	354	347	366	371	342
SMGR	Negative	Overbought	Positive	Sell	2,790	2,755	2,720	2,825	2,860	2,675
TLKM	Negative	Overbought	Positive	Sell	3,570	3,510	3,450	3,630	3,690	3,400
TOWR	Negative	Trading	Positive	Hold	540	535	530	545	550	520
UNTR	Positive	Trading	Negative	Hold	27,025	26,825	26,475	27,375	27,575	26,075
UNVR	Negative	Overbought	Positive	Sell	2,695	2,650	2,615	2,730	2,775	2,575



## Kiwoom Research Team



### HEAD OFFICE

Treasury Tower 27th Floor Unit A, District 8 Kawasan SCBD Lot 28,  
Jl.Jend.Sudirman Kav 52-53, Jakarta Selatan 12190

Tel : (021) 5010 5800  
Fax : (021) 5010 5820  
Email : [cs@kiwoom.co.id](mailto:cs@kiwoom.co.id)

PT Kiwoom Sekuritas Indonesia is licensed and supervised by the Financial Services Authority (OJK)

### OTHER DISCLOSURES

All Kiwoom's research reports made available to clients are simultaneously available on our own website <http://www.kiwoom.co.id/>. Not all research content is redistributed, e-mailed or made available to third-party aggregators. For all research reports available on a particular stock, please contact your sales representative. Any data discrepancies in this report could be the result of different calculations and/or adjustments.

### DISCLAIMER

This report has been prepared and issued by PT Kiwoom Sekuritas Indonesia. Information has been obtained from sources believed to be reliable but Kiwoom Securities do not warrant its completeness or accuracy. Forward-looking information or statements in this report contain information that is based on forecast of future results, estimates of amounts not yet determinable, assumptions, and therefore involve known and unknown risks and uncertainties which may cause the actual results, performance or achievements of their subject matter to be materially different from current expectations. To the fullest extent allowed by law, PT Kiwoom Sekuritas Indonesia shall not be liable for any direct, indirect or consequential losses, loss of profits, damages, costs or expenses incurred or suffered by any person or organization arising from reliance on or use of any information contained on this report. The information that we provide should not be construed in any manner whatsoever as, personalized advice. No mention of a particular security in this report constitutes a recommendation to buy, sell or hold that or any security, or that any particular security, portfolio of securities, transaction or investment strategy is suitable for any specific person. This report is being supplied to you solely for your information and may not be reproduced by, further distributed to or published in whole or in part by, any other person.