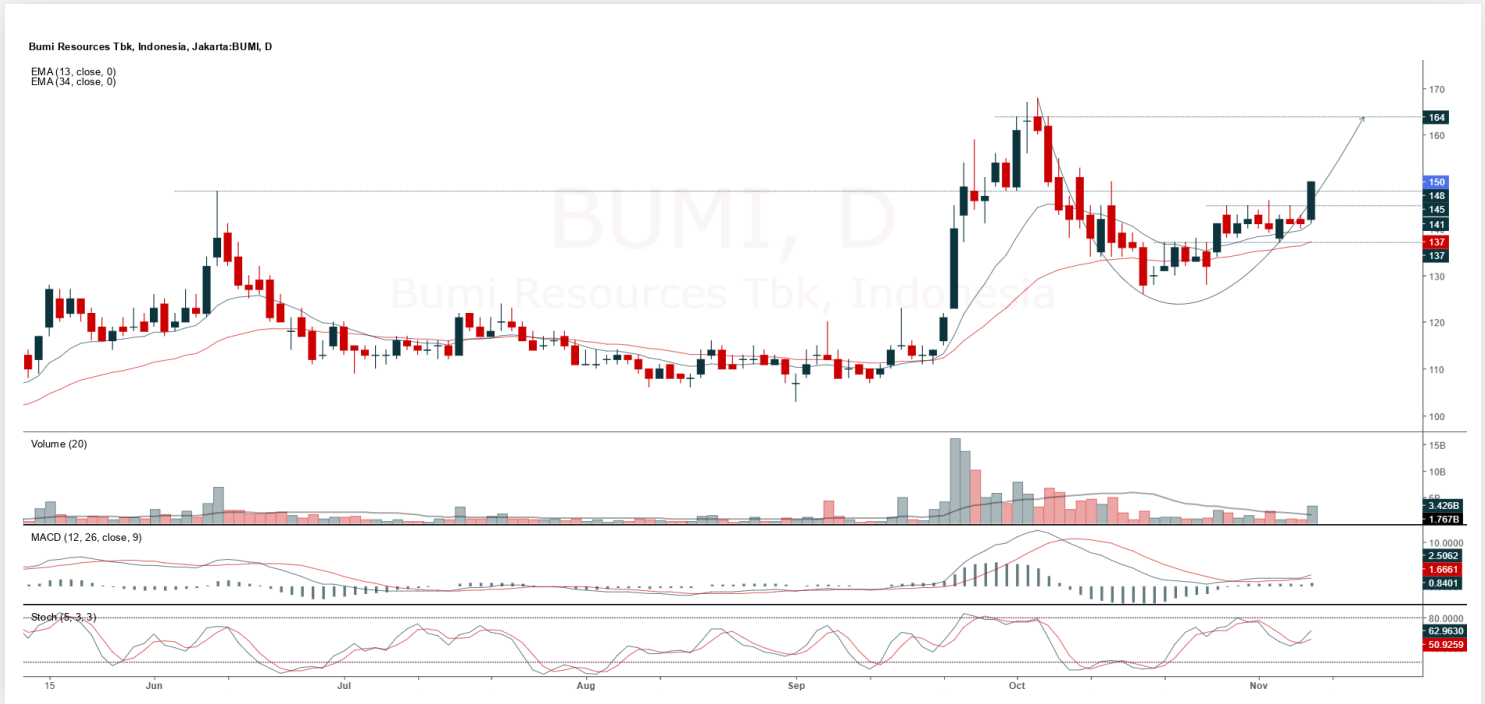




BUMI

Bumi Resources Tbk.



(BUMI). Price breaks resistance or sideways area. Price is supported by the stochastic indicator moving bullish, MACD line moving bullish (histogram moving positive) and increasing volume.

ADVICE: Averaging up or trading buy.

Entry Buy	Target Price	Support	Cut Loss
145 – 150	156 – 162	142 – 145	140



ENRG

Energi Mega Persada Tbk.



(ENRG). Price forms a swing low and has the potential to reach the nearest resistance. Price is supported by the MACD line with a potential golden cross (histogram moving toward positive) and volume starting to increase.

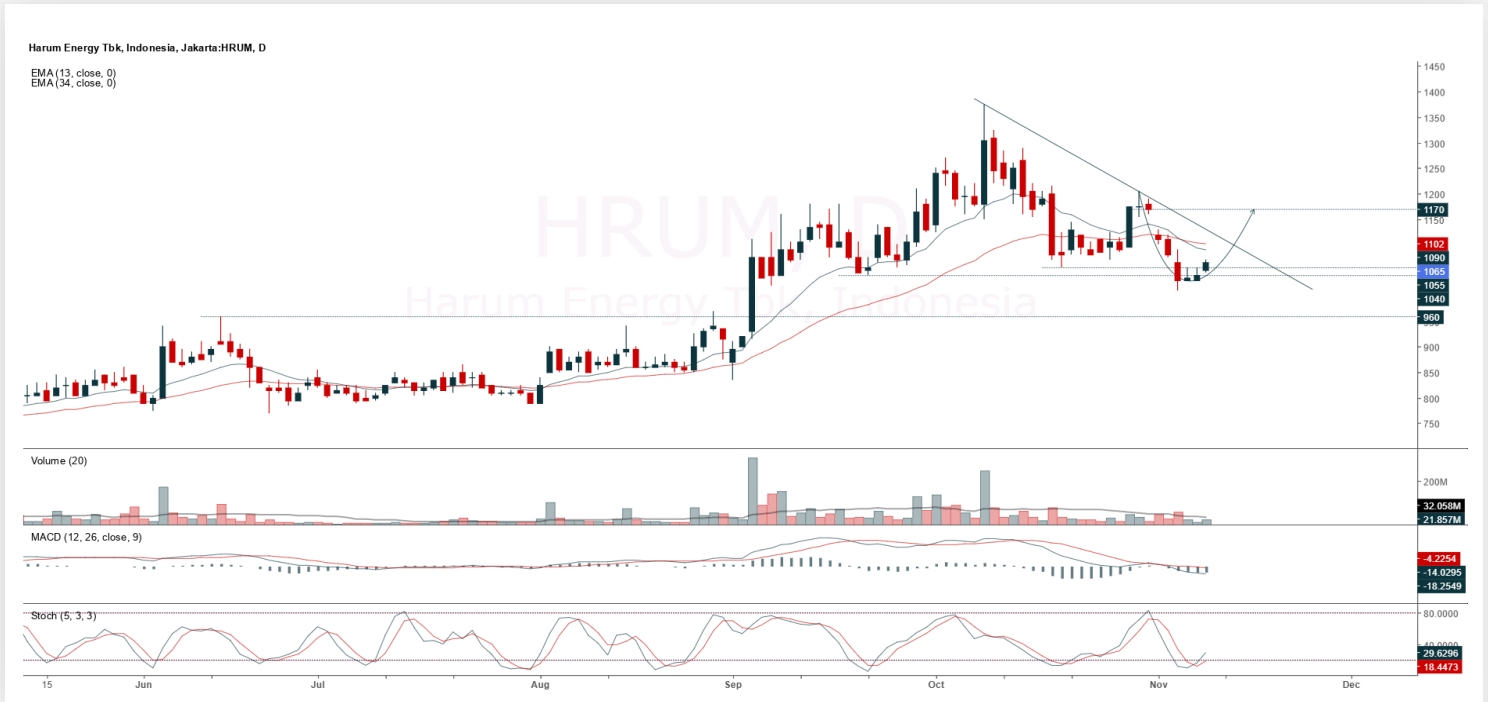
ADVICE: Hold or trading buy.

Entry Buy	Target Price	Support	Cut Loss
880 – 910	950 – 985	865 – 880	855



HRUM

Harum Energy Tbk.



(HRUM). Price forms a swing low and has the potential to reach resistance at the gap area. Price is supported by the stochastic indicator moving bullish, MACD histogram starting to move toward positive and volume starting to increase.

ADVICE: Accumulate buy or trading buy.

Entry Buy	Target Price	Support	Cut Loss
1,030 – 1,065	1,110 – 1,155	1,010 – 1,030	1,000



TOWR

Sarana Menara Nusantara Tbk.



(TOWR). Price breaks level 560 and is testing the next resistance at 570. Price is supported by the stochastic indicator forming a golden cross, MACD line moving bullish (histogram moving positive) and significantly increasing volume.

ADVICE: Buy on break 570 or trading buy.

Entry Buy	Target Price	Support	Cut Loss
550 – 570	595 – 620	540 – 550	530

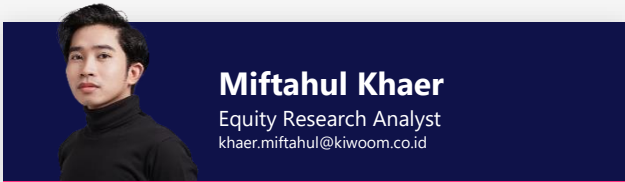


Forecast – Technical Analysis

Ticker	MA5	RSI Rec	MACD Trend	Recomm.	Pivot Point	Support		Resistance		Stop Loss Level
						1	2	1	2	
JCI	Negative	Overbought	Positive	Sell	8,425	8,375	8,350	8,450	8,525	8,225
AADI	Negative	Overbought	Positive	Sell	8,800	8,650	8,525	8,925	9,075	8,400
ACES	Negative	Trading	Positive	Hold	454	447	440	461	468	433
ADMIR	Negative	Trading	Negative	Sell	1,400	1,370	1,355	1,415	1,445	1,330
ADRO	Positive	Overbought	Positive	Hold	1,960	1,940	1,915	1,985	2,005	1,885
AKRA	Positive	Trading	Positive	Spec. Buy	1,230	1,210	1,190	1,250	1,270	1,170
AMMN	Negative	Trading	Negative	Sell	7,075	7,025	6,950	7,150	7,200	6,850
AMRT	Positive	Oversold	Negative	Spec. Buy	1,900	1,880	1,855	1,925	1,945	1,825
ANTM	Positive	Oversold	Negative	Spec. Buy	2,920	2,875	2,830	2,965	3,010	2,785
ASII	Negative	Overbought	Negative	Strong Sell	6,450	6,425	6,350	6,525	6,550	6,250
BBCA	Positive	Overbought	Positive	Hold	8,625	8,575	8,525	8,675	8,725	8,400
BBNI	Negative	Trading	Positive	Hold	4,470	4,415	4,360	4,525	4,580	4,290
BBRI	Positive	Trading	Positive	Spec. Buy	3,975	3,925	3,885	4,015	4,065	3,825
BBTN	Negative	Trading	Positive	Hold	1,230	1,215	1,200	1,245	1,260	1,180
BMRI	Positive	Overbought	Positive	Hold	4,760	4,730	4,700	4,790	4,820	4,630
BRPT	Positive	Trading	Negative	Hold	3,595	3,545	3,505	3,635	3,685	3,450
BUMI	Negative	Overbought	Positive	Sell	146	142	137	151	155	135
CPIN	Positive	Trading	Negative	Hold	4,650	4,600	4,560	4,690	4,740	4,490
CTRA	Positive	Trading	Positive	Spec. Buy	895	885	880	900	910	865
DSSA	Negative	Trading	Positive	Hold	93,975	87,925	81,825	100,075	106,125	80,575
EMTK	Negative	Trading	Positive	Hold	1,290	1,275	1,250	1,315	1,330	1,230
EXCL	Negative	Trading	Positive	Hold	2,750	2,725	2,700	2,775	2,800	2,655
GOTO	Negative	Overbought	Positive	Sell	66	63	61	68	71	60
HEAL	Positive	Oversold	Positive	Buy	1,455	1,440	1,425	1,470	1,485	1,405
ICBP	Negative	Trading	Negative	Sell	8,675	8,625	8,550	8,750	8,800	8,425
INCO	Negative	Trading	Negative	Sell	4,505	4,470	4,425	4,550	4,585	4,360
INDF	Positive	Trading	Negative	Hold	7,125	7,100	7,050	7,175	7,200	6,950
INKP	Positive	Trading	Negative	Hold	7,475	7,425	7,375	7,525	7,575	7,250
ISAT	Negative	Trading	Positive	Hold	2,115	2,050	1,995	2,170	2,235	1,965
ITMG	Negative	Trading	Positive	Hold	23,375	23,325	23,275	23,425	23,475	22,925
JPFA	Positive	Trading	Negative	Hold	2,315	2,275	2,245	2,345	2,385	2,210
KLBF	Negative	Trading	Positive	Hold	1,280	1,265	1,255	1,290	1,305	1,235
MAPI	Negative	Overbought	Positive	Sell	1,405	1,390	1,360	1,435	1,450	1,340
MBMA	Negative	Overbought	Positive	Sell	665	640	610	695	720	600
MDKA	Negative	Trading	Positive	Hold	2,465	2,420	2,355	2,530	2,575	2,320
MEDC	Positive	Trading	Negative	Hold	1,325	1,310	1,300	1,335	1,350	1,280
NCKL	Positive	Trading	Negative	Hold	1,120	1,100	1,085	1,135	1,155	1,070
PGAS	Positive	Trading	Positive	Spec. Buy	1,750	1,720	1,695	1,775	1,805	1,670
PGEO	Positive	Oversold	Negative	Spec. Buy	1,270	1,255	1,245	1,280	1,295	1,225
PTBA	Positive	Trading	Positive	Spec. Buy	2,390	2,380	2,370	2,400	2,410	2,335
SCMA	Negative	Trading	Positive	Hold	380	375	370	385	390	364
SMGR	Negative	Trading	Positive	Hold	2,830	2,750	2,660	2,920	3,000	2,620
TLKM	Negative	Trading	Positive	Hold	3,480	3,410	3,370	3,520	3,590	3,320
TOWR	Positive	Trading	Positive	Spec. Buy	555	540	520	575	590	515
UNTR	Negative	Trading	Positive	Hold	27,775	27,600	27,375	28,000	28,175	26,950
UNVR	Positive	Overbought	Negative	Sell	2,550	2,500	2,450	2,600	2,650	2,415



Kiwoom Research Team



HEAD OFFICE

Treasury Tower 27th Floor Unit A, District 8 Kawasan SCBD Lot 28,
Jl.Jend.Sudirman Kav 52-53, Jakarta Selatan 12190

Tel : (021) 5010 5800
Fax : (021) 5010 5820
Email : cs@kiwoom.co.id

PT Kiwoom Sekuritas Indonesia is licensed and supervised by the Financial Services Authority (OJK)

OTHER DISCLOSURES

All Kiwoom's research reports made available to clients are simultaneously available on our own website <http://www.kiwoom.co.id/>. Not all research content is redistributed, e-mailed or made available to third-party aggregators. For all research reports available on a particular stock, please contact your sales representative. Any data discrepancies in this report could be the result of different calculations and/or adjustments.

DISCLAIMER

This report has been prepared and issued by PT Kiwoom Sekuritas Indonesia. Information has been obtained from sources believed to be reliable but Kiwoom Securities do not warrant its completeness or accuracy. Forward-looking information or statements in this report contain information that is based on forecast of future results, estimates of amounts not yet determinable, assumptions, and therefore involve known and unknown risks and uncertainties which may cause the actual results, performance or achievements of their subject matter to be materially different from current expectations. To the fullest extent allowed by law, PT Kiwoom Sekuritas Indonesia shall not be liable for any direct, indirect or consequential losses, loss of profits, damages, costs or expenses incurred or suffered by any person or organization arising from reliance on or use of any information contained on this report. The information that we provide should not be construed in any manner whatsoever as, personalized advice. No mention of a particular security in this report constitutes a recommendation to buy, sell or hold that or any security, or that any particular security, portfolio of securities, transaction or investment strategy is suitable for any specific person. This report is being supplied to you solely for your information and may not be reproduced by, further distributed to or published in whole or in part by, any other person.