



Technical Recommendation

Jakarta Composite Index Range Today

8,325 / 8,240

Support

8,418 / 8,478

Resistance

Published on 14 November 2025



Jakarta Composite Index

JCI closed lower on Thursday trading, down 16.57pts / -0.20% to 8,372, due to lack of foreign buying in the regular market, although overall they recorded a fairly massive net purchase worth IDR 2.92T due to negotiated trades in CASA shares.

JCI closing position still allows for potential consolidation today near the nearest MA Support: 8,325; **KIWOOM RESEARCH** advises investors/traders to further tighten Trailing Stops and increase a Wait & See approach at the end of this week.

ADVISE: Set your TRAILING STOP, WAIT & SEE.



AADI

Adaro Andalan Indonesia Tbk.



(AADI). Price strengthens after holding at the support area. Price is supported by the MACD line still moving bullish (histogram moving positive) and slightly increasing volume.

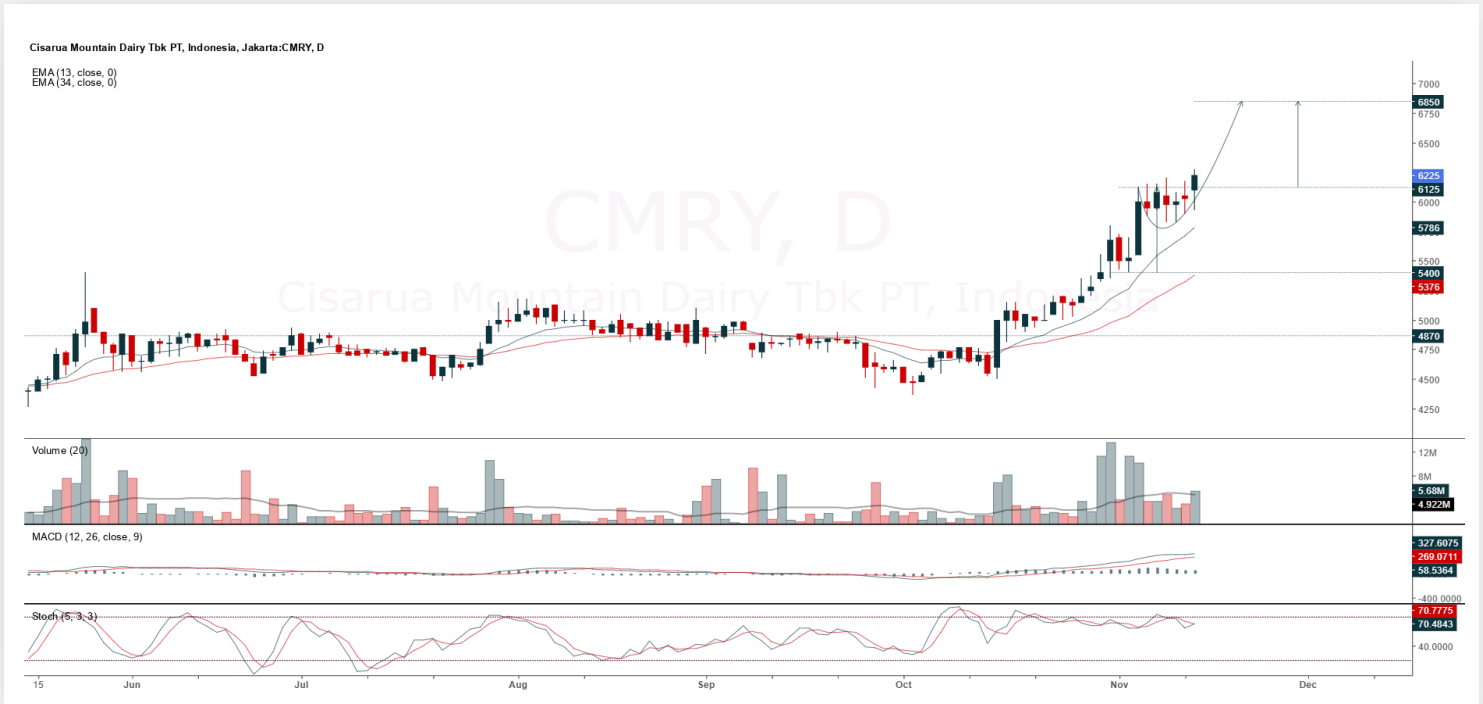
ADVICE: Averaging up or trading buy.

Entry Buy	Target Price	Support	Cut Loss
8,450 – 8,750	9,100 – 9,450	8,300 – 8,450	8,250



CMRY

Cisarua Mountain Dairy Tbk.



(CMRY). Price strengthens and breaks up the sideways area again. Price is supported by the stochastic indicator with a potential golden cross and MACD line still moving bullish (histogram moving positive) along with increasing volume.

ADVICE: Averaging up or trading buy.

Entry Buy	Target Price	Support	Cut Loss
6,000 – 6,225	6,475 – 6,725	5,900 – 6,000	5,850



MTEL

Dayamitra Telekomunikasi Tbk.



(MTEL). Price successfully rebounds after touching the support area. Price is supported by the stochastic indicator with a potential golden cross and MACD line moving bullish (histogram moving positive) along with increasing volume.

ADVICE: Accumulate buy or trading buy.

Entry Buy	Target Price	Support	Cut Loss
540 – 560	585 – 605	530 – 540	520



PNLF

Panin Financial Tbk.



(PNLF). Price successfully breaks out of resistance. Price is supported by the stochastic indicator moving bullish and MACD line moving bullish (histogram moving positive) along with significantly increasing volume.

ADVICE: Buy on weakness during pullback or trading buy.

Entry Buy	Target Price	Support	Cut Loss
248 – 256	266 – 276	244 – 248	240



Forecast – Technical Analysis

Ticker	MA5	RSI Rec	MACD Trend	Recomm.	Pivot Point	Support 1	Support 2	Resistance 1	Resistance 2	Stop Loss Level
JCI	Negative	Overbought	Positive	Sell	8,400	8,350	8,325	8,425	8,450	8,200
AADI	Negative	Overbought	Positive	Sell	8,725	8,650	8,600	8,775	8,850	8,475
ACES	Positive	Trading	Negative	Hold	439	436	433	442	445	427
ADMIR	Negative	Trading	Negative	Sell	1,405	1,385	1,365	1,425	1,445	1,345
ADRO	Negative	Trading	Positive	Hold	1,950	1,930	1,910	1,970	1,990	1,880
AKRA	Positive	Trading	Positive	Spec. Buy	1,245	1,240	1,225	1,260	1,265	1,210
AMMN	Positive	Trading	Negative	Hold	6,875	6,775	6,725	6,925	7,025	6,625
AMRT	Positive	Trading	Negative	Hold	1,910	1,890	1,875	1,925	1,945	1,845
ANTM	Positive	Oversold	Negative	Spec. Buy	2,900	2,880	2,860	2,920	2,940	2,815
ASII	Negative	Trading	Negative	Sell	6,400	6,375	6,325	6,450	6,475	6,225
BBCA	Positive	Trading	Negative	Hold	8,400	8,350	8,300	8,450	8,500	8,175
BBNI	Negative	Trading	Positive	Hold	4,450	4,415	4,390	4,475	4,510	4,320
BBRI	Positive	Trading	Positive	Spec. Buy	3,890	3,865	3,850	3,905	3,930	3,790
BBTN	Positive	Trading	Positive	Spec. Buy	1,205	1,195	1,185	1,215	1,225	1,165
BMRI	Positive	Trading	Positive	Spec. Buy	4,730	4,695	4,660	4,765	4,800	4,590
BRPT	Negative	Trading	Negative	Sell	3,785	3,690	3,615	3,860	3,955	3,560
BUMI	Negative	Strong Sell	Positive	Sell	212	184	161	235	263	158
CPIN	Positive	Trading	Negative	Hold	4,785	4,685	4,635	4,835	4,935	4,565
CTRA	Positive	Oversold	Negative	Spec. Buy	865	860	855	870	875	840
DSSA	Positive	Trading	Negative	Hold	87,700	86,400	85,600	88,500	89,800	84,300
EMTK	Negative	Trading	Positive	Hold	1,270	1,245	1,205	1,310	1,335	1,190
EXCL	Negative	Trading	Positive	Hold	2,740	2,710	2,660	2,790	2,820	2,620
GOTO	Negative	Overbought	Positive	Sell	65	63	62	66	68	61
HEAL	Positive	Oversold	Negative	Spec. Buy	1,420	1,415	1,405	1,430	1,435	1,385
ICBP	Positive	Oversold	Negative	Spec. Buy	8,525	8,450	8,400	8,575	8,650	8,275
INCO	Positive	Trading	Negative	Hold	4,320	4,255	4,220	4,355	4,420	4,155
INDF	Negative	Trading	Negative	Sell	7,175	7,075	7,025	7,225	7,325	6,900
INKP	Negative	Trading	Positive	Hold	7,675	7,525	7,375	7,825	7,975	7,250
ISAT	Negative	Trading	Positive	Hold	2,135	2,075	2,015	2,195	2,255	1,980
ITMG	Positive	Trading	Negative	Hold	22,650	22,575	22,450	22,775	22,850	22,125
JPFA	Positive	Trading	Negative	Hold	2,475	2,420	2,355	2,540	2,595	2,320
KLBF	Negative	Trading	Negative	Sell	1,285	1,275	1,265	1,295	1,305	1,245
MAPI	Positive	Trading	Positive	Spec. Buy	1,330	1,315	1,290	1,355	1,370	1,270
MBMA	Negative	Trading	Positive	Hold	665	655	635	685	695	625
MDKA	Negative	Trading	Positive	Hold	2,445	2,420	2,395	2,470	2,495	2,360
MEDC	Positive	Trading	Negative	Hold	1,285	1,255	1,240	1,300	1,330	1,220
NCKL	Positive	Oversold	Negative	Spec. Buy	1,095	1,080	1,065	1,110	1,125	1,050
PGAS	Negative	Trading	Positive	Hold	1,780	1,705	1,655	1,830	1,905	1,630
PGEO	Positive	Oversold	Negative	Spec. Buy	1,220	1,200	1,185	1,235	1,255	1,165
PTBA	Positive	Trading	Positive	Spec. Buy	2,370	2,350	2,330	2,390	2,410	2,295
SCMA	Negative	Trading	Positive	Hold	363	355	345	373	381	339
SMGR	Positive	Trading	Negative	Hold	2,675	2,645	2,615	2,705	2,735	2,575
TLKM	Negative	Trading	Positive	Hold	3,530	3,490	3,440	3,580	3,620	3,390
TOWR	Negative	Trading	Positive	Hold	555	545	530	570	580	525
UNTR	Negative	Overbought	Positive	Sell	28,275	28,125	27,950	28,450	28,600	27,525
UNVR	Positive	Trading	Negative	Hold	2,525	2,490	2,455	2,560	2,595	2,420



Kiwoom Research Team



HEAD OFFICE

Treasury Tower 27th Floor Unit A, District 8 Kawasan SCBD Lot 28,
Jl.Jend.Sudirman Kav 52-53, Jakarta Selatan 12190

Tel : (021) 5010 5800
Fax : (021) 5010 5820
Email : cs@kiwoom.co.id

PT Kiwoom Sekuritas Indonesia is licensed and supervised by the Financial Services Authority (OJK)

OTHER DISCLOSURES

All Kiwoom's research reports made available to clients are simultaneously available on our own website <http://www.kiwoom.co.id/>. Not all research content is redistributed, e-mailed or made available to third-party aggregators. For all research reports available on a particular stock, please contact your sales representative. Any data discrepancies in this report could be the result of different calculations and/or adjustments.

DISCLAIMER

This report has been prepared and issued by PT Kiwoom Sekuritas Indonesia. Information has been obtained from sources believed to be reliable but Kiwoom Securities do not warrant its completeness or accuracy. Forward-looking information or statements in this report contain information that is based on forecast of future results, estimates of amounts not yet determinable, assumptions, and therefore involve known and unknown risks and uncertainties which may cause the actual results, performance or achievements of their subject matter to be materially different from current expectations. To the fullest extent allowed by law, PT Kiwoom Sekuritas Indonesia shall not be liable for any direct, indirect or consequential losses, loss of profits, damages, costs or expenses incurred or suffered by any person or organization arising from reliance on or use of any information contained on this report. The information that we provide should not be construed in any manner whatsoever as, personalized advice. No mention of a particular security in this report constitutes a recommendation to buy, sell or hold that or any security, or that any particular security, portfolio of securities, transaction or investment strategy is suitable for any specific person. This report is being supplied to you solely for your information and may not be reproduced by, further distributed to or published in whole or in part by, any other person.