



Technical Recommendation

Jakarta Composite Index Range Today

8,345 / 8,260

Support

8,420 – 8,440 / 8,478

Resistance

Published on 17 November 2025



Jakarta Composite Index

JCI closed last Friday's trading nearly flat or only slipped 1.56pts / -0.02% at the level of 8,370.44. Seeing JCI closing position that has not yet firmly moved higher than 8,440, **KIWOOM RESEARCH** suggests adopting more of a *WAIT & SEE* stance even though we suspect JCI is still in a fairly controlled *Sideways* phase as it is still above the first Support: MA10 / 8,345.

ADVISE: *WAIT & SEE*, set your *TRAILING STOP*.



ANTM

Aneka Tambang Tbk.



(ANTM). Price forms another swing low and is currently testing resistance. Price is supported by the Stochastic indicator moving bullish and the MACD line with a potential golden cross (histogram moving toward positive) along with increasing volume.

ADVICE: Accumulate buy or trading buy.

Entry Buy	Target Price	Support	Cut Loss
2,940 – 3,040	3,170 – 3,290	2,880 – 2,940	2,860



ELSA

Elnusa Tbk.



(ELSA). Price rebounds again and has the potential to move toward the nearest resistance. Price is supported by the Stochastic indicator moving bullish and the MACD line moving bullish (histogram moving positive).

ADVICE: Hold or trading buy.

Entry Buy	Target Price	Support	Cut Loss
525 – 540	560 – 580	515 – 525	505



ENRG

Energi Mega Persada Tbk.



(ENRG). Price successfully rebounds after touching the trendline support. Price is supported by the MACD line with a potential golden cross (histogram moving toward positive).

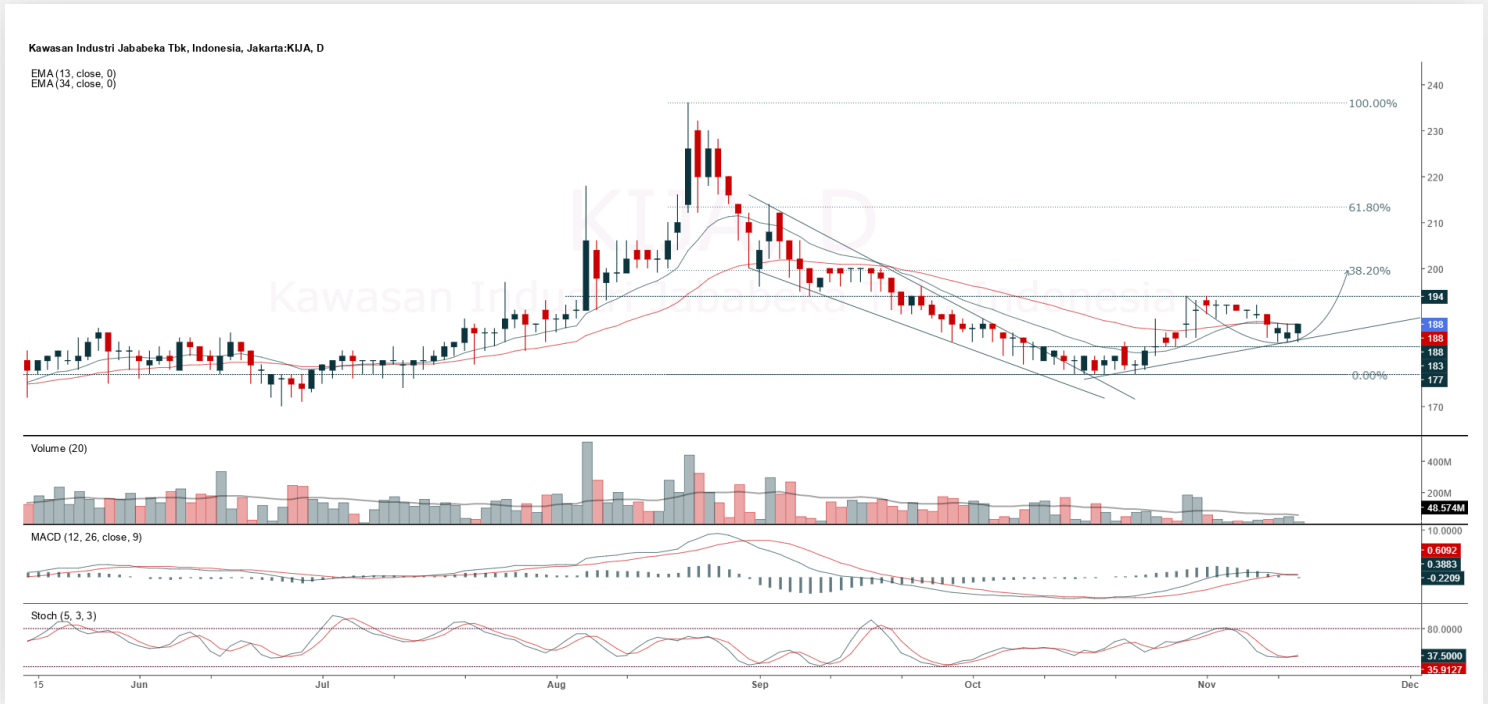
ADVICE: Accumulate buy or trading buy.

Entry Buy	Target Price	Support	Cut Loss
880 – 910	945 – 980	865 – 880	855



KIJA

Kawasan Industri Jababeka Tbk.



(KIJA). Price forms another swing low after touching the nearest support area. Price is supported by the Stochastic indicator golden cross as a buying signal indication.

ADVICE: Accumulate buy or trading buy.

Entry Buy	Target Price	Support	Cut Loss
183 – 188	194 – 200	180 – 183	178



Forecast – Technical Analysis

Ticker	MA5	RSI Rec	MACD Trend	Recomm.	Pivot Point	Support 1	Support 2	Resistance 1	Resistance 2	Stop Loss Level
JCI	Positive	Overbought	Positive	Hold	8,375	8,350	8,325	8,400	8,450	8,200
AADI	Negative	Overbought	Positive	Sell	8,750	8,675	8,600	8,825	8,900	8,475
ACES	Positive	Trading	Negative	Hold	430	421	414	437	446	407
ADMIR	Positive	Trading	Negative	Hold	1,355	1,335	1,310	1,380	1,400	1,290
ADRO	Positive	Trading	Negative	Hold	1,900	1,880	1,855	1,925	1,945	1,830
AKRA	Positive	Trading	Positive	Spec. Buy	1,235	1,225	1,205	1,255	1,265	1,190
AMMN	Positive	Oversold	Negative	Spec. Buy	6,725	6,575	6,375	6,925	7,075	6,275
AMRT	Positive	Oversold	Negative	Spec. Buy	1,880	1,865	1,845	1,900	1,915	1,820
ANTM	Negative	Trading	Negative	Sell	2,965	2,870	2,765	3,070	3,165	2,725
ASII	Negative	Trading	Negative	Sell	6,400	6,325	6,275	6,450	6,525	6,175
BBCA	Positive	Trading	Negative	Hold	8,425	8,350	8,300	8,475	8,550	8,175
BBNI	Positive	Trading	Negative	Hold	4,405	4,360	4,325	4,440	4,485	4,260
BBRI	Positive	Trading	Negative	Hold	3,890	3,845	3,820	3,915	3,960	3,760
BBTN	Positive	Trading	Negative	Hold	1,200	1,185	1,180	1,205	1,220	1,160
BMRI	Positive	Overbought	Positive	Hold	4,720	4,685	4,650	4,755	4,790	4,580
BRPT	Negative	Trading	Positive	Hold	3,770	3,660	3,600	3,830	3,940	3,545
BUMI	Negative	Strong Sell	Positive	Sell	226	208	198	236	254	195
CPIN	Negative	Trading	Negative	Sell	4,785	4,760	4,735	4,810	4,835	4,665
CTRA	Positive	Oversold	Negative	Spec. Buy	865	860	850	875	880	835
DSSA	Positive	Trading	Positive	Spec. Buy	90,275	87,450	85,550	92,175	95,000	84,275
EMTK	Positive	Trading	Positive	Spec. Buy	1,235	1,210	1,165	1,280	1,305	1,150
EXCL	Negative	Trading	Positive	Hold	2,725	2,710	2,685	2,750	2,765	2,645
GOTO	Negative	Overbought	Positive	Sell	65	64	62	67	68	61
HEAL	Positive	Oversold	Negative	Spec. Buy	1,420	1,415	1,400	1,435	1,440	1,380
ICBP	Positive	Oversold	Negative	Spec. Buy	8,475	8,400	8,350	8,525	8,600	8,225
INCO	Positive	Trading	Negative	Hold	4,275	4,225	4,175	4,325	4,375	4,110
INDF	Positive	Trading	Negative	Hold	7,125	7,100	7,050	7,175	7,200	6,950
INKP	Negative	Trading	Positive	Hold	7,575	7,475	7,425	7,625	7,725	7,300
ISAT	Positive	Trading	Positive	Spec. Buy	2,070	2,035	2,000	2,105	2,140	1,970
ITMG	Positive	Trading	Negative	Hold	22,525	22,425	22,350	22,600	22,700	22,000
JPFA	Negative	Trading	Negative	Sell	2,430	2,395	2,360	2,465	2,500	2,320
KLBF	Positive	Trading	Negative	Hold	1,265	1,230	1,200	1,295	1,330	1,180
MAPI	Positive	Trading	Negative	Hold	1,300	1,285	1,245	1,340	1,355	1,230
MBMA	Negative	Trading	Negative	Sell	645	630	615	660	675	605
MDKA	Negative	Trading	Positive	Hold	2,425	2,395	2,355	2,465	2,495	2,315
MEDC	Positive	Trading	Negative	Hold	1,290	1,275	1,260	1,305	1,320	1,240
NCKL	Positive	Oversold	Negative	Spec. Buy	1,055	1,030	1,000	1,085	1,110	985
PGAS	Positive	Trading	Positive	Spec. Buy	1,730	1,715	1,700	1,745	1,760	1,675
PGEO	Positive	Oversold	Negative	Spec. Buy	1,190	1,175	1,160	1,205	1,220	1,145
PTBA	Positive	Trading	Negative	Hold	2,350	2,335	2,320	2,365	2,380	2,285
SCMA	Positive	Trading	Negative	Hold	352	342	332	362	372	327
SMGR	Positive	Trading	Negative	Hold	2,630	2,590	2,550	2,670	2,710	2,510
TLKM	Negative	Overbought	Positive	Sell	3,540	3,515	3,490	3,565	3,590	3,435
TOWR	Negative	Trading	Positive	Hold	545	535	530	550	560	520
UNTR	Negative	Trading	Positive	Hold	28,125	27,975	27,775	28,325	28,475	27,350
UNVR	Positive	Trading	Negative	Hold	2,515	2,465	2,445	2,535	2,585	2,405



Kiwoom Research Team



HEAD OFFICE

Treasury Tower 27th Floor Unit A, District 8 Kawasan SCBD Lot 28,
Jl.Jend.Sudirman Kav 52-53, Jakarta Selatan 12190

Tel : (021) 5010 5800
Fax : (021) 5010 5820
Email : cs@kiwoom.co.id

PT Kiwoom Sekuritas Indonesia is licensed and supervised by the Financial Services Authority (OJK)

OTHER DISCLOSURES

All Kiwoom's research reports made available to clients are simultaneously available on our own website <http://www.kiwoom.co.id/>. Not all research content is redistributed, e-mailed or made available to third-party aggregators. For all research reports available on a particular stock, please contact your sales representative. Any data discrepancies in this report could be the result of different calculations and/or adjustments.

DISCLAIMER

This report has been prepared and issued by PT Kiwoom Sekuritas Indonesia. Information has been obtained from sources believed to be reliable but Kiwoom Securities do not warrant its completeness or accuracy. Forward-looking information or statements in this report contain information that is based on forecast of future results, estimates of amounts not yet determinable, assumptions, and therefore involve known and unknown risks and uncertainties which may cause the actual results, performance or achievements of their subject matter to be materially different from current expectations. To the fullest extent allowed by law, PT Kiwoom Sekuritas Indonesia shall not be liable for any direct, indirect or consequential losses, loss of profits, damages, costs or expenses incurred or suffered by any person or organization arising from reliance on or use of any information contained on this report. The information that we provide should not be construed in any manner whatsoever as, personalized advice. No mention of a particular security in this report constitutes a recommendation to buy, sell or hold that or any security, or that any particular security, portfolio of securities, transaction or investment strategy is suitable for any specific person. This report is being supplied to you solely for your information and may not be reproduced by, further distributed to or published in whole or in part by, any other person.