



# Technical Recommendation

Jakarta Composite Index Range Today

8,626 – 8,608 / 8,520      8,749 / 8,880 / 9,000  
Support                                  Resistance

Published on 10 December 2025



## **Jakarta Composite Index**

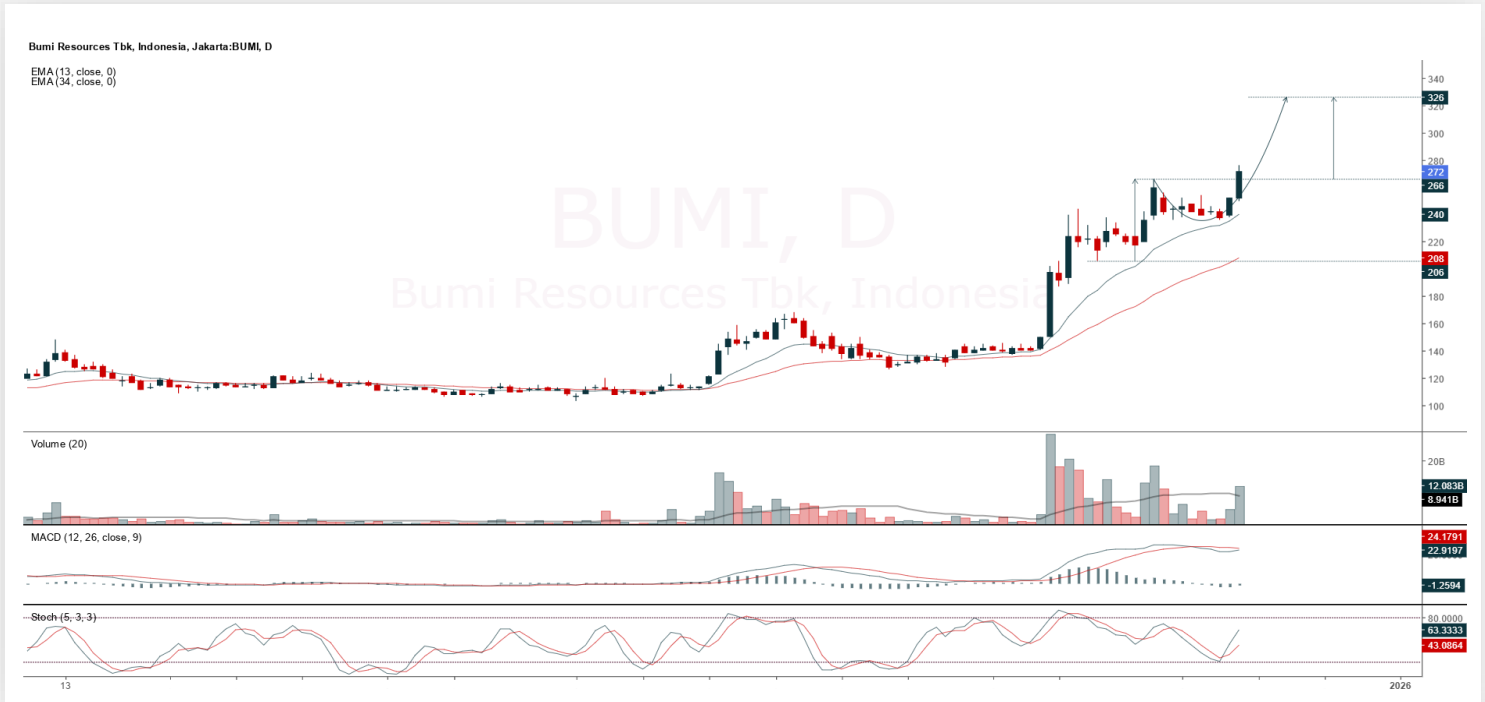
JCI closed Tuesday's trading session with a correction of 53.52 pts / -0.61% to the level of 8,657.18, producing a candle similar to a Bearish Engulfing at the ATH Resistance area of 8,749; accompanied by a consistently present RSI negative divergence. Although broadly the Uptrend remains intact, **KIWOOM RESEARCH** advises investors/traders to stay prepared for the possibility of a pullback at any time, with MA10 (8,608 for now) as the nearest Support that will serve as the first trigger to gradually reduce positions (if broken).

**ADVISE:** Set your TRAILING STOP.



## BUMI

Bumi Resources Tbk.



**(BUMI).** Price closed breaking resistance and has the opportunity to continue the uptrend (if it holds above 266). The strengthening is supported by the Stochastic indicator moving bullish, MACD line potential golden cross (histogram moving toward positive) and significantly increasing volume.

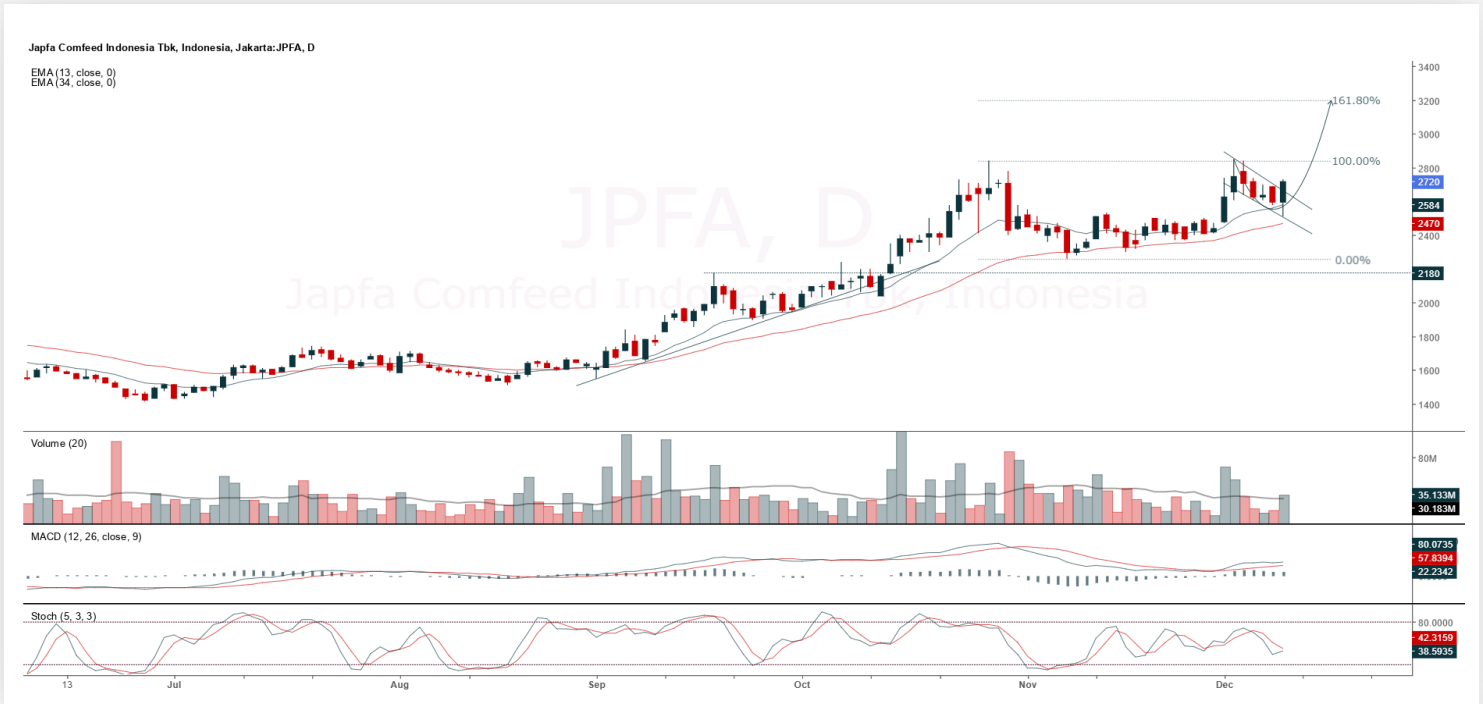
**ADVICE:** Averaging up or trading buy.

| Entry Buy | Target Price | Support   | Cut Loss |
|-----------|--------------|-----------|----------|
| 262 – 272 | 284 – 294    | 258 – 262 | 254      |



## JPFA

Japfa Comfeed Indonesia Tbk.



**(JPFA).** Price closed rebounding and forming a bullish flag pattern. The strengthening is supported by the Stochastic indicator potential golden cross, MACD line moving bullish (histogram moving positive) and increasing volume.

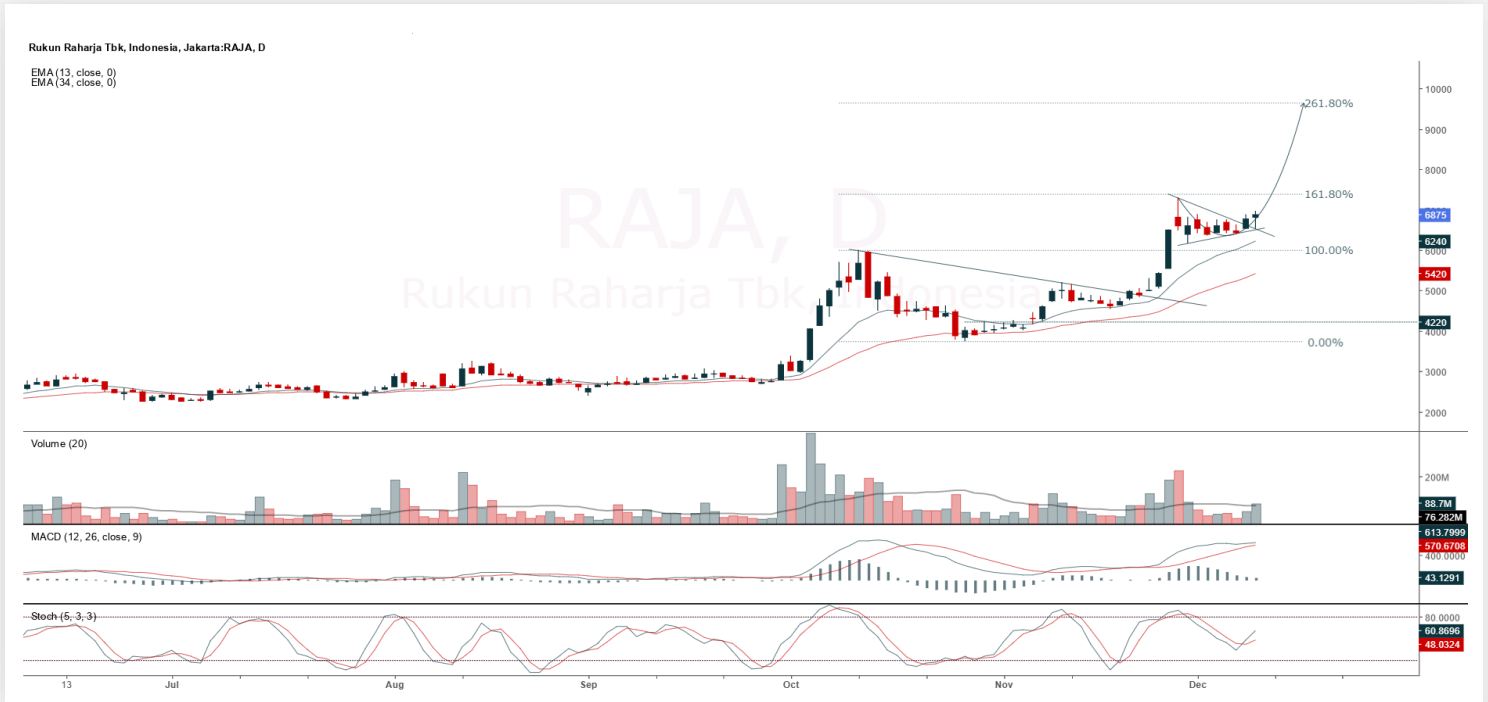
**ADVICE:** Accumulate buy or trading buy.

| Entry Buy     | Target Price  | Support       | Cut Loss |
|---------------|---------------|---------------|----------|
| 2,630 – 2,720 | 2,840 – 2,940 | 2,580 – 2,630 | 2,560    |



## RAJA

Rukun Raharja Tbk.



**(RAJA).** Price closed rallying again and forming a bullish pennant pattern. The strengthening is supported by the Stochastic indicator moving bullish, MACD line moving bullish (histogram moving positive) and the volume trend increasing again.

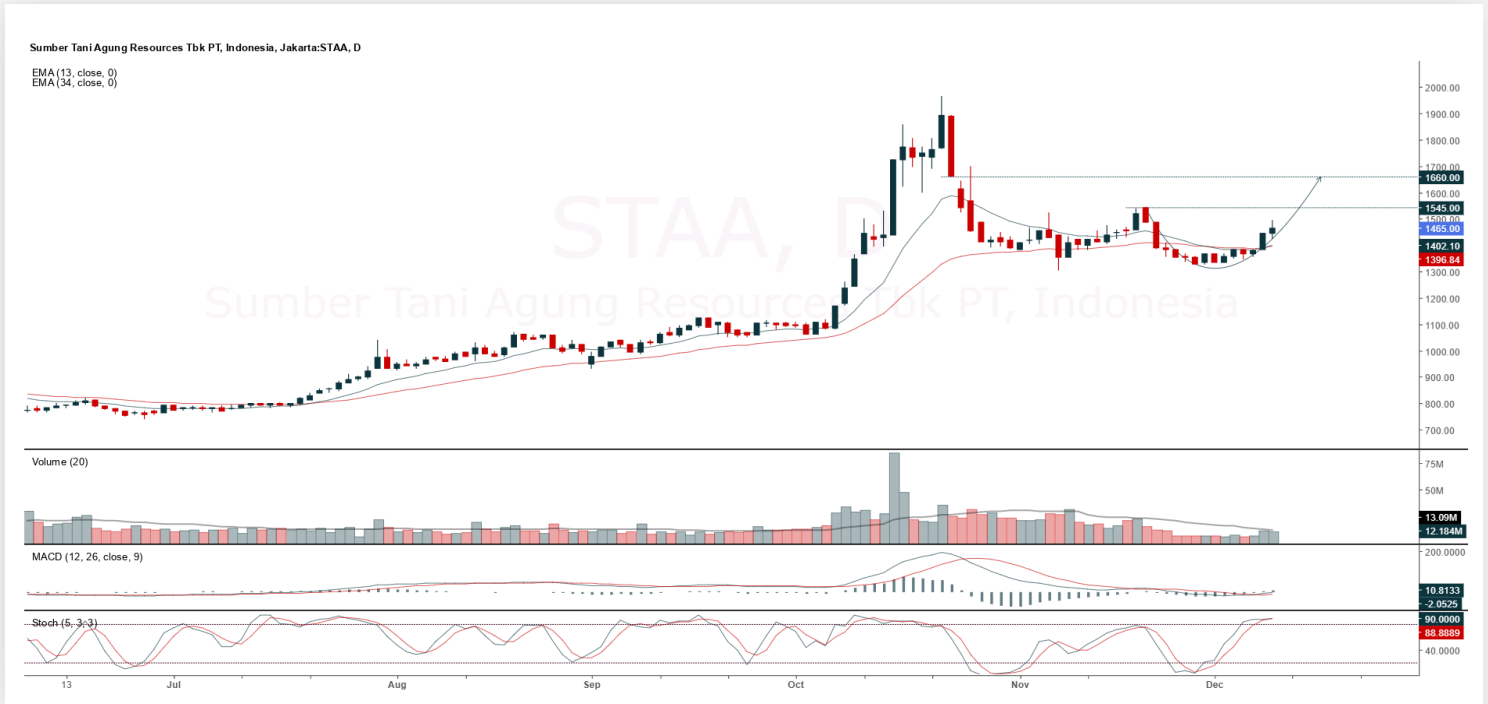
**ADVICE:** Accumulate buy or trading buy.

| Entry Buy     | Target Price  | Support       | Cut Loss |
|---------------|---------------|---------------|----------|
| 6,650 – 6,875 | 7,150 – 7,425 | 6,525 – 6,650 | 6,475    |



## STAA

Sumber Tani Agung Resources Tbk.



**(STAA).** Price strengthened again and has the opportunity to test the rounding bottom pattern resistance. The strengthening is supported by the Stochastic indicator moving bullish and MACD line moving bullish (histogram moving positive).

**ADVICE:** Accumulate buy or trading buy.

| Entry Buy     | Target Price  | Support       | Cut Loss |
|---------------|---------------|---------------|----------|
| 1,415 – 1,465 | 1,525 – 1,585 | 1,390 – 1,415 | 1,380    |



## Forecast – Technical Analysis

| Ticker | MA5      | RSI Rec     | MACD Trend | Recomm.     | Pivot Point | Support 1 | Support 2 | Resistance 1 | Resistance 2 | Stop Loss Level |
|--------|----------|-------------|------------|-------------|-------------|-----------|-----------|--------------|--------------|-----------------|
| JCI    | Negative | Overbought  | Positive   | Sell        | 8,700       | 8,650     | 8,575     | 8,750        | 8,825        | 8,450           |
| AADI   | Positive | Oversold    | Negative   | Spec. Buy   | 7,500       | 7,425     | 7,350     | 7,575        | 7,650        | 7,250           |
| ACES   | Negative | Trading     | Positive   | Hold        | 421         | 418       | 415       | 424          | 427          | 409             |
| ADMIR  | Negative | Trading     | Positive   | Hold        | 1,430       | 1,345     | 1,290     | 1,485        | 1,570        | 1,270           |
| ADRO   | Negative | Trading     | Negative   | Sell        | 1,870       | 1,835     | 1,795     | 1,910        | 1,945        | 1,765           |
| AKRA   | Negative | Trading     | Negative   | Sell        | 1,260       | 1,235     | 1,205     | 1,290        | 1,315        | 1,185           |
| AMMN   | Positive | Oversold    | Negative   | Spec. Buy   | 6,300       | 6,150     | 6,000     | 6,450        | 6,600        | 5,900           |
| AMRT   | Negative | Trading     | Positive   | Hold        | 1,930       | 1,915     | 1,885     | 1,960        | 1,975        | 1,855           |
| ANTM   | Positive | Trading     | Positive   | Spec. Buy   | 2,950       | 2,910     | 2,870     | 2,990        | 3,030        | 2,825           |
| ASII   | Negative | Trading     | Positive   | Hold        | 6,650       | 6,525     | 6,325     | 6,850        | 6,975        | 6,225           |
| BBCA   | Positive | Trading     | Negative   | Hold        | 8,200       | 8,100     | 8,000     | 8,300        | 8,400        | 7,875           |
| BBNI   | Negative | Trading     | Negative   | Sell        | 4,305       | 4,280     | 4,235     | 4,350        | 4,375        | 4,170           |
| BBRI   | Positive | Oversold    | Negative   | Spec. Buy   | 3,685       | 3,665     | 3,635     | 3,715        | 3,735        | 3,580           |
| BBTN   | Positive | Oversold    | Negative   | Spec. Buy   | 1,140       | 1,125     | 1,110     | 1,155        | 1,170        | 1,095           |
| BMRI   | Negative | Trading     | Negative   | Sell        | 4,930       | 4,875     | 4,820     | 4,985        | 5,050        | 4,745           |
| BRPT   | Positive | Trading     | Negative   | Hold        | 3,450       | 3,395     | 3,330     | 3,515        | 3,570        | 3,280           |
| BUMI   | Negative | Overbought  | Negative   | Strong Sell | 263         | 249       | 237       | 275          | 289          | 233             |
| CPIN   | Positive | Trading     | Positive   | Spec. Buy   | 4,730       | 4,660     | 4,580     | 4,810        | 4,880        | 4,510           |
| CTRA   | Negative | Trading     | Positive   | Hold        | 860         | 850       | 840       | 870          | 880          | 825             |
| DSSA   | Positive | Trading     | Positive   | Spec. Buy   | 109,500     | 108,025   | 105,650   | 111,875      | 113,350      | 104,075         |
| EMTK   | Negative | Trading     | Positive   | Hold        | 1,325       | 1,305     | 1,285     | 1,345        | 1,365        | 1,265           |
| EXCL   | Negative | Strong Sell | Positive   | Sell        | 3,420       | 3,285     | 3,200     | 3,505        | 3,640        | 3,150           |
| GOTO   | Negative | Overbought  | Positive   | Sell        | 71          | 70        | 67        | 74           | 75           | 66              |
| HEAL   | Negative | Trading     | Positive   | Hold        | 1,440       | 1,430     | 1,415     | 1,455        | 1,465        | 1,395           |
| ICBP   | Positive | Oversold    | Negative   | Spec. Buy   | 8,050       | 8,000     | 7,925     | 8,125        | 8,175        | 7,800           |
| INCO   | Positive | Trading     | Positive   | Spec. Buy   | 3,940       | 3,835     | 3,750     | 4,025        | 4,130        | 3,690           |
| INDF   | Positive | Oversold    | Negative   | Spec. Buy   | 6,925       | 6,850     | 6,775     | 7,000        | 7,075        | 6,675           |
| INKP   | Positive | Trading     | Positive   | Spec. Buy   | 8,525       | 8,200     | 7,875     | 8,850        | 9,175        | 7,750           |
| ISAT   | Negative | Overbought  | Positive   | Sell        | 2,435       | 2,360     | 2,295     | 2,500        | 2,575        | 2,260           |
| ITMG   | Positive | Oversold    | Negative   | Spec. Buy   | 21,950      | 21,925    | 21,850    | 22,025       | 22,050       | 21,525          |
| JPFA   | Positive | Overbought  | Positive   | Hold        | 2,640       | 2,550     | 2,420     | 2,770        | 2,860        | 2,385           |
| KLBF   | Negative | Trading     | Negative   | Sell        | 1,180       | 1,165     | 1,135     | 1,210        | 1,225        | 1,120           |
| MAPI   | Positive | Oversold    | Negative   | Spec. Buy   | 1,200       | 1,180     | 1,155     | 1,225        | 1,245        | 1,140           |
| MBMA   | Positive | Trading     | Negative   | Hold        | 550         | 535       | 520       | 565          | 580          | 510             |
| MDKA   | Positive | Trading     | Negative   | Hold        | 2,290       | 2,240     | 2,190     | 2,340        | 2,390        | 2,155           |
| MEDC   | Positive | Trading     | Positive   | Spec. Buy   | 1,300       | 1,285     | 1,265     | 1,320        | 1,335        | 1,245           |
| NCKL   | Positive | Trading     | Positive   | Spec. Buy   | 1,020       | 1,010     | 995       | 1,035        | 1,045        | 980             |
| PGAS   | Negative | Trading     | Positive   | Hold        | 1,820       | 1,800     | 1,785     | 1,835        | 1,855        | 1,755           |
| PGEO   | Negative | Trading     | Positive   | Hold        | 1,180       | 1,165     | 1,145     | 1,200        | 1,215        | 1,130           |
| PTBA   | Positive | Trading     | Negative   | Hold        | 2,295       | 2,285     | 2,275     | 2,305        | 2,315        | 2,240           |
| SCMA   | Positive | Trading     | Positive   | Spec. Buy   | 384         | 378       | 372       | 390          | 396          | 366             |
| SMGR   | Negative | Trading     | Positive   | Hold        | 2,905       | 2,855     | 2,775     | 2,985        | 3,035        | 2,730           |
| TLKM   | Negative | Trading     | Negative   | Sell        | 3,600       | 3,545     | 3,470     | 3,675        | 3,730        | 3,415           |
| TOWR   | Negative | Trading     | Positive   | Hold        | 560         | 555       | 545       | 570          | 575          | 535             |
| UNTR   | Negative | Overbought  | Positive   | Sell        | 29,450      | 29,075    | 28,600    | 29,925       | 30,300       | 28,150          |
| UNVR   | Negative | Trading     | Negative   | Sell        | 2,650       | 2,585     | 2,530     | 2,705        | 2,770        | 2,490           |



## Kiwoom Research Team



### HEAD OFFICE

Treasury Tower 27th Floor Unit A, District 8 Kawasan SCBD Lot 28,  
Jl.Jend.Sudirman Kav 52-53, Jakarta Selatan 12190

Tel : (021) 5010 5800  
Fax : (021) 5010 5820  
Email : [cs@kiwoom.co.id](mailto:cs@kiwoom.co.id)

PT Kiwoom Sekuritas Indonesia is licensed and supervised by the Financial Services Authority (OJK)

### OTHER DISCLOSURES

All Kiwoom's research reports made available to clients are simultaneously available on our own website <http://www.kiwoom.co.id/>. Not all research content is redistributed, e-mailed or made available to third-party aggregators. For all research reports available on a particular stock, please contact your sales representative. Any data discrepancies in this report could be the result of different calculations and/or adjustments.

### DISCLAIMER

This report has been prepared and issued by PT Kiwoom Sekuritas Indonesia. Information has been obtained from sources believed to be reliable but Kiwoom Securities do not warrant its completeness or accuracy. Forward-looking information or statements in this report contain information that is based on forecast of future results, estimates of amounts not yet determinable, assumptions, and therefore involve known and unknown risks and uncertainties which may cause the actual results, performance or achievements of their subject matter to be materially different from current expectations. To the fullest extent allowed by law, PT Kiwoom Sekuritas Indonesia shall not be liable for any direct, indirect or consequential losses, loss of profits, damages, costs or expenses incurred or suffered by any person or organization arising from reliance on or use of any information contained on this report. The information that we provide should not be construed in any manner whatsoever as, personalized advice. No mention of a particular security in this report constitutes a recommendation to buy, sell or hold that or any security, or that any particular security, portfolio of securities, transaction or investment strategy is suitable for any specific person. This report is being supplied to you solely for your information and may not be reproduced by, further distributed to or published in whole or in part by, any other person.