



Technical Recommendation

Jakarta Composite Index Range Today

8,560 / 8,500 – 8,450 **8,700 – 8,776 / 8,812 / 9,000**
Support Resistance

Published on 12 December 2025



Jakarta Composite Index

Immediately after recording a new all-time high at 8,776.97, JCI closed corrected 80.44pts / -0.92% to the level of 8,620.48; falling exactly at the MA10 Support which **KIWOOM RESEARCH** usually always emphasizes as this medium-term Uptrend platform.

Technically, yesterday Thursday's trading candle confirm formed a Bearish Engulfing pattern which can indicate more consolidation is coming today, first of all testing yesterday's Low again at around 8,560; which is also exactly the Location of MA20 as the second Support. Seen from the longer time-frame, **KIWOOM RESEARCH** assesses JCI Uptrend is still quite intact, even though consolidation (normal) has to occur toward the 8,500 – 8,450 area (= Support lower channel).

ADVISE: Reduce positions, set your next Trailing Stop, or Wait & See.



HEAL

Medikaloka Hermina Tbk.



(HEAL). Price strengthened and is attempting to test the sideways area. The strengthening is supported by the Stochastic indicator golden cross and the MACD line still moving bullish (histogram still moving positive).

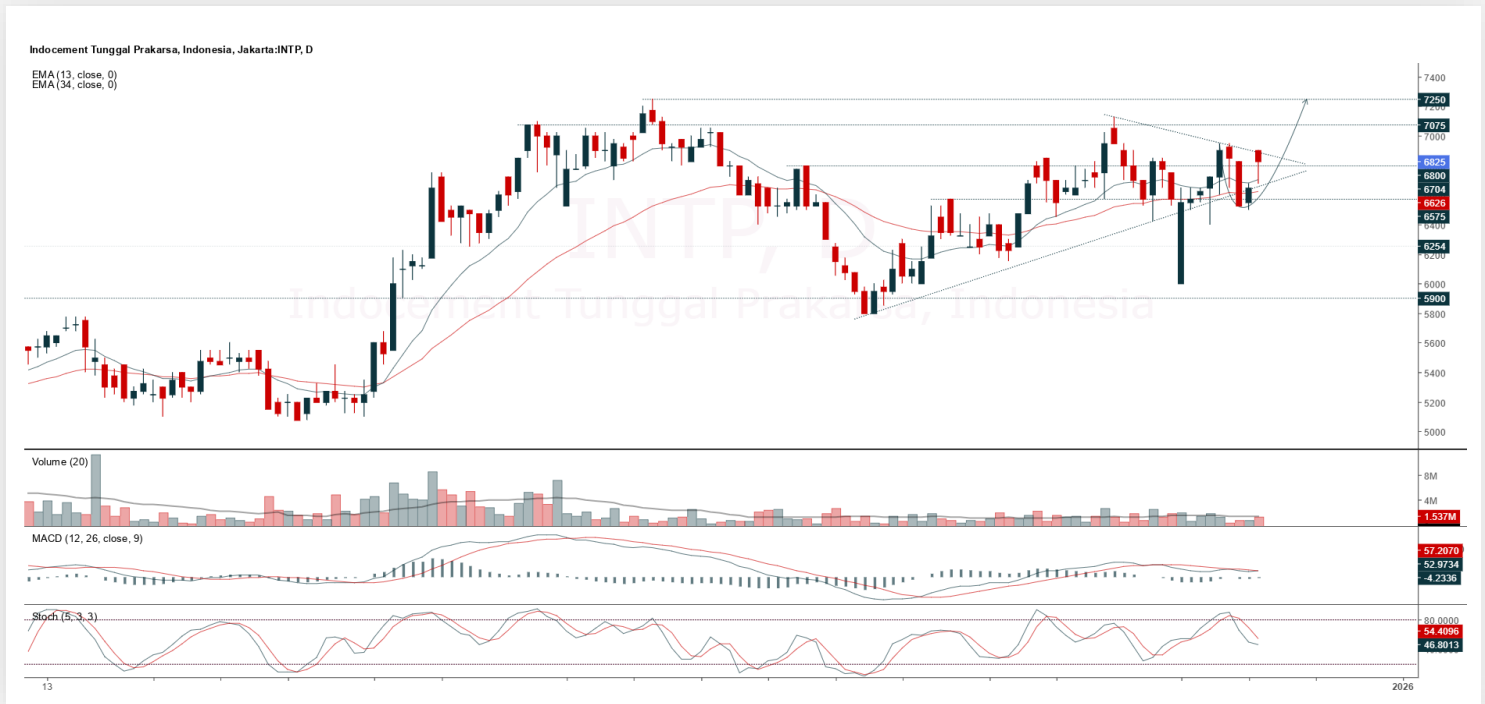
ADVICE: Buy on break or trading buy.

| Entry Buy | Target Price | Support | Cut Loss |
|---------------|---------------|---------------|----------|
| 1,410 – 1,450 | 1,500 – 1,550 | 1,390 – 1,410 | 1,380 |



INTP

Indocement Tunggal Prakarsa Tbk.



(INTP). Price closed rebounding and forming a swing low. The strengthening is supported by the Stochastic indicator potential golden cross, MACD line potential golden cross (histogram moving toward positive) and increasing volume.

ADVICE: Buy on break or trading buy.

| Entry Buy | Target Price | Support | Cut Loss |
|---------------|---------------|---------------|----------|
| 6,650 – 6,825 | 7,050 – 7,250 | 6,550 – 6,650 | 6,500 |



MAPA

Map Aktif Adiperkasa Tbk.



(MAPA). Price closed rebounding and has the opportunity to test the trendline resistance for transition. The strengthening is supported by the Stochastic indicator moving bullish, MACD line potential golden cross (histogram moving toward positive) and volume increasing again.

ADVICE: Accumulate buy or trading buy.

| Entry Buy | Target Price | Support | Cut Loss |
|-----------|--------------|-----------|----------|
| 700 – 720 | 745 – 770 | 690 – 700 | 680 |



PTRO

Petrosea Tbk.



(PTRO). Price broke out resistance again and has the opportunity to continue the uptrend. The strengthening is supported by the Stochastic indicator potential golden cross, MACD line potential golden cross (histogram moving toward positive) and volume increasing again.

ADVICE: Hold or trading buy.

| Entry Buy | Target Price | Support | Cut Loss |
|-----------------|-----------------|-----------------|----------|
| 10,650 – 11,025 | 11,475 – 11,925 | 10,450 – 10,650 | 10,400 |

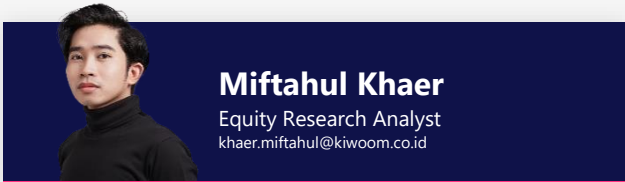


Forecast – Technical Analysis

| Ticker | MA5 | RSI Rec | MACD Trend | Recomm. | Pivot Point | Support 1 | Support 2 | Resistance 1 | Resistance 2 | Stop Loss Level |
|--------|----------|-------------|------------|-----------|-------------|-----------|-----------|--------------|--------------|-----------------|
| JCI | Negative | Trading | Negative | Sell | 8,675 | 8,575 | 8,475 | 8,800 | 8,900 | 8,325 |
| AADI | Positive | Oversold | Negative | Spec. Buy | 7,225 | 7,050 | 6,825 | 7,450 | 7,625 | 6,725 |
| ACES | Positive | Oversold | Positive | Buy | 418 | 413 | 410 | 421 | 426 | 403 |
| ADMIR | Negative | Trading | Positive | Hold | 1,400 | 1,305 | 1,225 | 1,480 | 1,575 | 1,205 |
| ADRO | Negative | Trading | Negative | Sell | 1,815 | 1,760 | 1,715 | 1,860 | 1,915 | 1,685 |
| AKRA | Positive | Trading | Negative | Hold | 1,255 | 1,230 | 1,200 | 1,285 | 1,310 | 1,180 |
| AMMN | Positive | Trading | Negative | Hold | 6,275 | 6,175 | 5,975 | 6,475 | 6,575 | 5,875 |
| AMRT | Negative | Trading | Positive | Hold | 1,910 | 1,890 | 1,855 | 1,945 | 1,965 | 1,825 |
| ANTM | Negative | Trading | Positive | Hold | 2,925 | 2,865 | 2,815 | 2,975 | 3,035 | 2,770 |
| ASII | Positive | Trading | Negative | Hold | 6,525 | 6,400 | 6,200 | 6,725 | 6,850 | 6,125 |
| BBCA | Positive | Oversold | Negative | Spec. Buy | 8,075 | 7,950 | 7,775 | 8,250 | 8,375 | 7,650 |
| BBNI | Positive | Trading | Negative | Hold | 4,290 | 4,190 | 4,090 | 4,390 | 4,490 | 4,030 |
| BBRI | Positive | Oversold | Negative | Spec. Buy | 3,645 | 3,590 | 3,525 | 3,710 | 3,765 | 3,470 |
| BBTN | Positive | Oversold | Negative | Spec. Buy | 1,105 | 1,085 | 1,065 | 1,125 | 1,145 | 1,050 |
| BMRI | Negative | Trading | Negative | Sell | 4,960 | 4,865 | 4,740 | 5,075 | 5,175 | 4,665 |
| BRPT | Negative | Trading | Positive | Hold | 3,720 | 3,615 | 3,500 | 3,835 | 3,940 | 3,445 |
| BUMI | Negative | Strong Sell | Positive | Sell | 349 | 320 | 297 | 372 | 401 | 293 |
| CPIN | Positive | Oversold | Negative | Spec. Buy | 4,550 | 4,450 | 4,350 | 4,650 | 4,750 | 4,285 |
| CTRA | Positive | Trading | Positive | Spec. Buy | 860 | 850 | 835 | 875 | 885 | 820 |
| DSSA | Positive | Trading | Negative | Hold | 109,825 | 108,550 | 106,225 | 112,150 | 113,425 | 104,625 |
| EMTK | Negative | Trading | Positive | Hold | 1,415 | 1,345 | 1,285 | 1,475 | 1,545 | 1,265 |
| EXCL | Negative | Strong Sell | Positive | Sell | 3,745 | 3,580 | 3,455 | 3,870 | 4,035 | 3,405 |
| GOTO | Negative | Trading | Positive | Hold | 69 | 68 | 67 | 70 | 71 | 66 |
| HEAL | Positive | Trading | Positive | Spec. Buy | 1,440 | 1,430 | 1,420 | 1,450 | 1,460 | 1,400 |
| ICBP | Positive | Oversold | Negative | Spec. Buy | 8,050 | 7,950 | 7,850 | 8,150 | 8,250 | 7,725 |
| INCO | Negative | Trading | Positive | Hold | 3,870 | 3,820 | 3,750 | 3,940 | 3,990 | 3,695 |
| INDF | Positive | Oversold | Negative | Spec. Buy | 6,750 | 6,550 | 6,350 | 6,950 | 7,150 | 6,250 |
| INKP | Positive | Trading | Negative | Hold | 7,925 | 7,650 | 7,425 | 8,150 | 8,425 | 7,325 |
| ISAT | Negative | Overbought | Positive | Sell | 2,380 | 2,340 | 2,280 | 2,440 | 2,480 | 2,245 |
| ITMG | Positive | Oversold | Negative | Spec. Buy | 21,825 | 21,750 | 21,650 | 21,925 | 22,000 | 21,325 |
| JPFA | Positive | Trading | Positive | Spec. Buy | 2,620 | 2,560 | 2,510 | 2,670 | 2,730 | 2,470 |
| KLBF | Positive | Trading | Negative | Hold | 1,150 | 1,130 | 1,115 | 1,165 | 1,185 | 1,100 |
| MAPI | Positive | Oversold | Negative | Spec. Buy | 1,175 | 1,155 | 1,120 | 1,210 | 1,230 | 1,105 |
| MBMA | Negative | Trading | Negative | Sell | 550 | 530 | 505 | 575 | 595 | 496 |
| MDKA | Positive | Trading | Negative | Hold | 2,245 | 2,160 | 2,065 | 2,340 | 2,425 | 2,035 |
| MEDC | Positive | Oversold | Negative | Spec. Buy | 1,255 | 1,220 | 1,190 | 1,285 | 1,320 | 1,170 |
| NCKL | Positive | Oversold | Positive | Buy | 990 | 960 | 920 | 1,030 | 1,060 | 905 |
| PGAS | Positive | Trading | Positive | Spec. Buy | 1,840 | 1,810 | 1,775 | 1,875 | 1,905 | 1,745 |
| PGEO | Negative | Oversold | Positive | Spec. Buy | 1,170 | 1,145 | 1,125 | 1,190 | 1,215 | 1,110 |
| PTBA | Positive | Oversold | Negative | Spec. Buy | 2,270 | 2,250 | 2,230 | 2,290 | 2,310 | 2,195 |
| SCMA | Positive | Overbought | Positive | Hold | 420 | 385 | 364 | 441 | 476 | 358 |
| SMGR | Negative | Trading | Positive | Hold | 2,825 | 2,780 | 2,735 | 2,870 | 2,915 | 2,695 |
| TLKM | Positive | Trading | Negative | Hold | 3,610 | 3,525 | 3,420 | 3,715 | 3,800 | 3,365 |
| TOWR | Positive | Trading | Negative | Hold | 540 | 535 | 520 | 555 | 560 | 515 |
| UNTR | Positive | Trading | Positive | Spec. Buy | 29,600 | 29,375 | 29,125 | 29,850 | 30,075 | 28,675 |
| UNVR | Positive | Trading | Negative | Hold | 2,680 | 2,615 | 2,540 | 2,755 | 2,820 | 2,500 |



Kiwoom Research Team



HEAD OFFICE

Treasury Tower 27th Floor Unit A, District 8 Kawasan SCBD Lot 28,
Jl.Jend.Sudirman Kav 52-53, Jakarta Selatan 12190

Tel : (021) 5010 5800
Fax : (021) 5010 5820
Email : cs@kiwoom.co.id

PT Kiwoom Sekuritas Indonesia is licensed and supervised by the Financial Services Authority (OJK)

OTHER DISCLOSURES

All Kiwoom's research reports made available to clients are simultaneously available on our own website <http://www.kiwoom.co.id/>. Not all research content is redistributed, e-mailed or made available to third-party aggregators. For all research reports available on a particular stock, please contact your sales representative. Any data discrepancies in this report could be the result of different calculations and/or adjustments.

DISCLAIMER

This report has been prepared and issued by PT Kiwoom Sekuritas Indonesia. Information has been obtained from sources believed to be reliable but Kiwoom Securities do not warrant its completeness or accuracy. Forward-looking information or statements in this report contain information that is based on forecast of future results, estimates of amounts not yet determinable, assumptions, and therefore involve known and unknown risks and uncertainties which may cause the actual results, performance or achievements of their subject matter to be materially different from current expectations. To the fullest extent allowed by law, PT Kiwoom Sekuritas Indonesia shall not be liable for any direct, indirect or consequential losses, loss of profits, damages, costs or expenses incurred or suffered by any person or organization arising from reliance on or use of any information contained on this report. The information that we provide should not be construed in any manner whatsoever as, personalized advice. No mention of a particular security in this report constitutes a recommendation to buy, sell or hold that or any security, or that any particular security, portfolio of securities, transaction or investment strategy is suitable for any specific person. This report is being supplied to you solely for your information and may not be reproduced by, further distributed to or published in whole or in part by, any other person.