



GJTL

Gajah Tunggal Tbk.



(GJTL). Price breaks resistance and opportunity to return to uptrend. Strengthening is supported by Stochastic indicator moving bullish and MACD line golden cross (histogram moves back to positive) as well as significant volume increase.

ADVICE: Buy on weakness or trading buy.

Entry Buy	Target Price	Support	Cut Loss
1,055 – 1,090	1,135 – 1,180	1,035 – 1,055	1,025



NCKL

Trimegah Bangun Persada Tbk.



(NCKL). Price closed swing low and opportunity to form a double bottom pattern. Strengthening is supported by Stochastic indicator golden cross and MACD line moving bullish (histogram moving positive).

ADVICE: Accumulate buy or trading buy.

Entry Buy	Target Price	Support	Cut Loss
950 – 985	1,025 – 1,065	935 – 950	925



SCMA

Surya Citra Media Tbk.



(SCMA). Price rallies again and potential to continue uptrend to test the next resistance. Strengthening is supported by Stochastic indicator moving bullish and MACD line moving bullish (histogram moving positive).

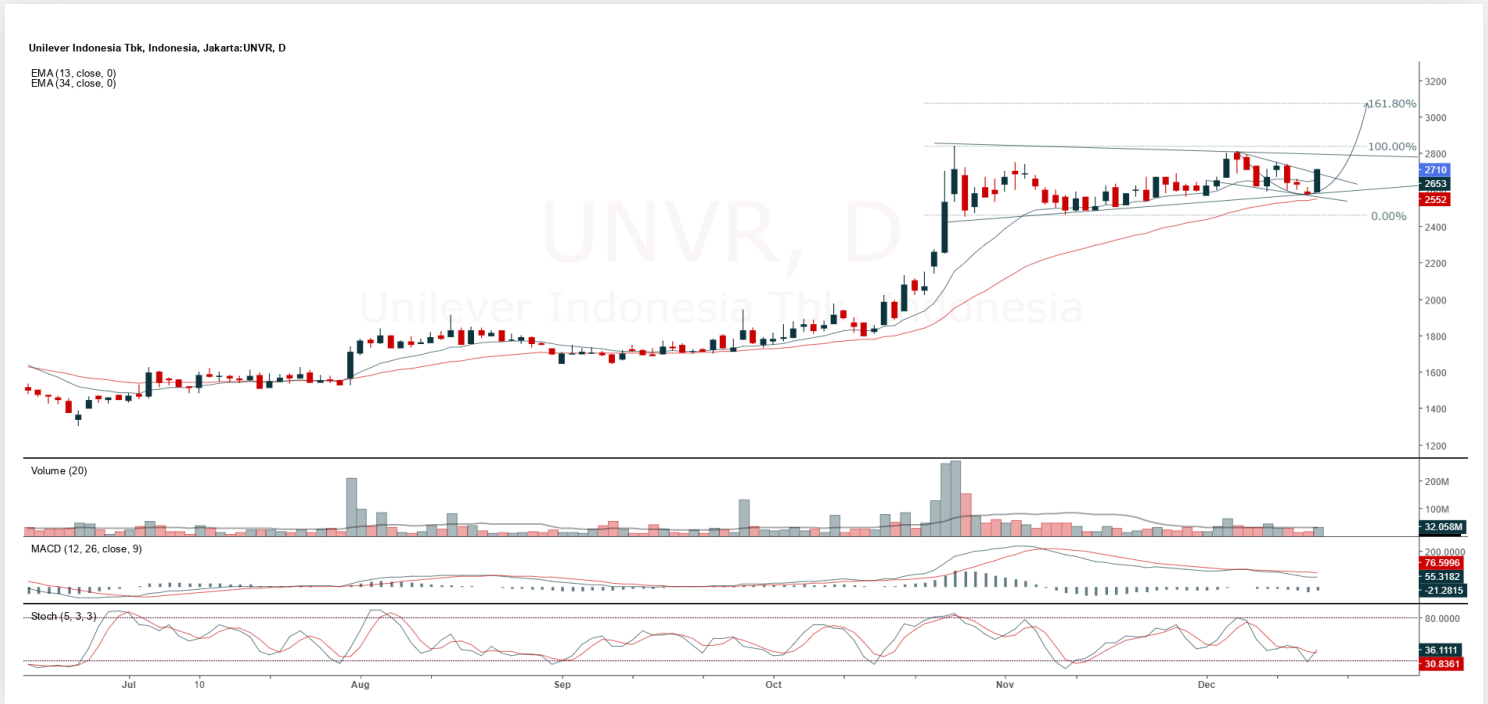
ADVICE: Hold or trading buy.

Entry Buy	Target Price	Support	Cut Loss
428 – 442	460 – 478	420 – 428	416



UNVR

Unilever Indonesia Tbk.



(UNVR). Price forms swing low again and opportunity to test the nearest resistance. Strengthening is supported by Stochastic indicator golden cross and MACD histogram starting to move towards positive as well as increasing volume.

ADVICE: Hold or trading buy.

Entry Buy	Target Price	Support	Cut Loss
2,620 – 2,710	2,820 – 2,930	2,570 – 2,620	2,550



Forecast – Technical Analysis

Ticker	MA5	RSI Rec	MACD Trend	Recomm.	Pivot Point	Support 1	Support 2	Resistance 1	Resistance 2	Stop Loss Level
JCI	Negative	Overbought	Negative	Strong Sell	8,675	8,650	8,575	8,725	8,775	8,450
AADI	Positive	Oversold	Negative	Spec. Buy	7,125	7,075	7,000	7,200	7,250	6,900
ACES	Positive	Oversold	Negative	Spec. Buy	410	406	402	414	418	396
ADMIR	Negative	Trading	Positive	Hold	1,385	1,365	1,330	1,420	1,440	1,310
ADRO	Positive	Trading	Negative	Hold	1,815	1,800	1,785	1,830	1,845	1,760
AKRA	Negative	Trading	Negative	Sell	1,235	1,225	1,215	1,245	1,255	1,195
AMMN	Negative	Trading	Positive	Hold	6,600	6,500	6,375	6,725	6,825	6,275
AMRT	Positive	Trading	Positive	Spec. Buy	1,905	1,890	1,880	1,915	1,930	1,850
ANTM	Negative	Trading	Positive	Hold	3,000	2,960	2,920	3,040	3,080	2,875
ASII	Positive	Trading	Negative	Hold	6,575	6,550	6,475	6,650	6,675	6,375
BBCA	Positive	Trading	Negative	Hold	8,225	8,050	7,875	8,400	8,575	7,750
BBNI	Negative	Trading	Positive	Hold	4,410	4,355	4,280	4,485	4,540	4,215
BBRI	Positive	Trading	Positive	Spec. Buy	3,745	3,680	3,615	3,810	3,875	3,560
BBTN	Positive	Trading	Negative	Hold	1,160	1,135	1,110	1,185	1,210	1,095
BMRI	Negative	Trading	Negative	Sell	5,000	4,950	4,870	5,075	5,125	4,795
BRPT	Negative	Trading	Positive	Hold	3,615	3,585	3,525	3,675	3,705	3,470
BUMI	Negative	Overbought	Positive	Sell	344	330	316	358	372	311
CPIN	Positive	Trading	Negative	Hold	4,575	4,535	4,485	4,625	4,665	4,415
CTRA	Negative	Trading	Positive	Hold	870	860	850	880	890	835
DSSA	Positive	Trading	Negative	Hold	105,575	103,375	99,825	109,125	111,325	98,325
EMTK	Negative	Overbought	Positive	Sell	1,420	1,365	1,310	1,475	1,530	1,290
EXCL	Negative	Overbought	Positive	Sell	3,735	3,620	3,565	3,790	3,905	3,510
GOTO	Positive	Trading	Negative	Hold	67	64	62	69	72	61
HEAL	Positive	Trading	Positive	Spec. Buy	1,400	1,390	1,370	1,420	1,430	1,350
ICBP	Negative	Trading	Positive	Hold	8,325	8,250	8,150	8,425	8,500	8,025
INCO	Negative	Trading	Positive	Hold	3,865	3,825	3,795	3,895	3,935	3,735
INDF	Positive	Oversold	Negative	Spec. Buy	6,800	6,750	6,725	6,825	6,875	6,600
INKP	Positive	Trading	Negative	Hold	7,975	7,925	7,825	8,075	8,125	7,700
ISAT	Positive	Overbought	Negative	Sell	2,385	2,290	2,195	2,480	2,575	2,160
ITMG	Positive	Oversold	Negative	Spec. Buy	21,350	21,150	20,925	21,575	21,775	20,625
JPFA	Positive	Trading	Negative	Hold	2,705	2,575	2,525	2,755	2,885	2,485
KLBF	Negative	Trading	Positive	Hold	1,205	1,190	1,155	1,240	1,255	1,140
MAPI	Positive	Oversold	Negative	Spec. Buy	1,165	1,150	1,135	1,180	1,195	1,120
MBMA	Positive	Oversold	Negative	Spec. Buy	535	525	520	540	550	510
MDKA	Negative	Trading	Positive	Hold	2,325	2,285	2,235	2,375	2,415	2,200
MEDC	Positive	Trading	Negative	Hold	1,265	1,245	1,230	1,280	1,300	1,210
NCKL	Positive	Trading	Positive	Spec. Buy	975	955	935	995	1,015	920
PGAS	Negative	Trading	Negative	Sell	1,820	1,800	1,785	1,835	1,855	1,755
PGEO	Negative	Trading	Positive	Hold	1,175	1,165	1,155	1,185	1,195	1,135
PTBA	Positive	Trading	Negative	Hold	2,270	2,260	2,250	2,280	2,290	2,215
SCMA	Negative	Overbought	Positive	Sell	438	429	420	447	456	413
SMGR	Positive	Trading	Negative	Hold	2,775	2,720	2,685	2,810	2,865	2,645
TLKM	Positive	Trading	Negative	Hold	3,510	3,465	3,430	3,545	3,590	3,375
TOWR	Positive	Trading	Positive	Spec. Buy	560	540	525	575	595	515
UNTR	Positive	Trading	Negative	Hold	28,275	28,100	27,975	28,400	28,575	27,550
UNVR	Positive	Trading	Negative	Hold	2,645	2,580	2,515	2,710	2,775	2,475



Kiwoom Research Team



HEAD OFFICE

Treasury Tower 27th Floor Unit A, District 8 Kawasan SCBD Lot 28,
Jl.Jend.Sudirman Kav 52-53, Jakarta Selatan 12190

Tel : (021) 5010 5800
Fax : (021) 5010 5820
Email : cs@kiwoom.co.id

PT Kiwoom Sekuritas Indonesia is licensed and supervised by the Financial Services Authority (OJK)

OTHER DISCLOSURES

All Kiwoom's research reports made available to clients are simultaneously available on our own website <http://www.kiwoom.co.id/>. Not all research content is redistributed, e-mailed or made available to third-party aggregators. For all research reports available on a particular stock, please contact your sales representative. Any data discrepancies in this report could be the result of different calculations and/or adjustments.

DISCLAIMER

This report has been prepared and issued by PT Kiwoom Sekuritas Indonesia. Information has been obtained from sources believed to be reliable but Kiwoom Securities do not warrant its completeness or accuracy. Forward-looking information or statements in this report contain information that is based on forecast of future results, estimates of amounts not yet determinable, assumptions, and therefore involve known and unknown risks and uncertainties which may cause the actual results, performance or achievements of their subject matter to be materially different from current expectations. To the fullest extent allowed by law, PT Kiwoom Sekuritas Indonesia shall not be liable for any direct, indirect or consequential losses, loss of profits, damages, costs or expenses incurred or suffered by any person or organization arising from reliance on or use of any information contained on this report. The information that we provide should not be construed in any manner whatsoever as, personalized advice. No mention of a particular security in this report constitutes a recommendation to buy, sell or hold that or any security, or that any particular security, portfolio of securities, transaction or investment strategy is suitable for any specific person. This report is being supplied to you solely for your information and may not be reproduced by, further distributed to or published in whole or in part by, any other person.