



ADMR

Alamtri Minerals Indonesia Tbk.



(ADMR). Price has formed a swing low and has the potential to test a bullish pennant pattern. Strengthening is supported by a Stochastic golden cross and the MACD line moving bullish (histogram moving positive) along with increasing volume.

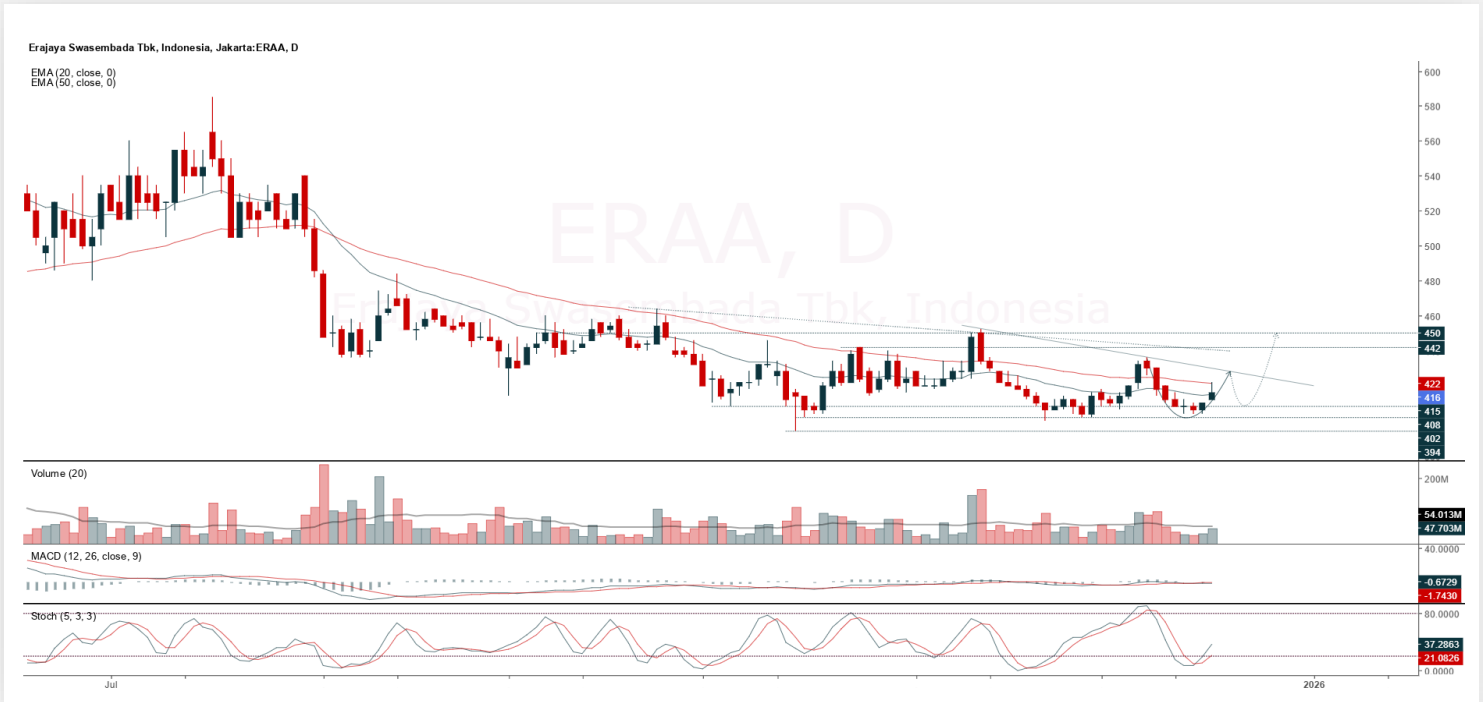
ADVICE: Accumulate buy or trading buy.

Entry Buy	Target Price	Support	Cut Loss
1,375 – 1,425	1,485 – 1,540	1,350 – 1,375	1,340



ERAA

Erajaya Swasembada Tbk.



(ERAA). Price has formed a swing low and has the potential to test the nearest resistance. Strengthening is supported by the Stochastic indicator moving bullish and the MACD line's potential for a golden cross (histogram moving in a positive direction) along with increasing volume.

ADVICE: Accumulate buy or trading buy.

Entry Buy	Target Price	Support	Cut Loss
402 – 416	434 – 450	394 – 402	390



MAPI

Mitra Adiperkasa Tbk.



(MAPI). Price has formed a swing low and breakout of the trendline resistance. Strengthening is supported by the Stochastic indicator moving bullish and the MACD line's potential for a golden cross (histogram moving in a positive direction) along with increasing volume.

ADVICE: Accumulate buy or trading buy.

Entry Buy	Target Price	Support	Cut Loss
1,180 – 1,225	1,275 – 1,325	1,160 – 1,180	1,150



PGAS

Perusahaan Gas Negara Tbk.



(PGAS). Price has rallied again and breakout of a bullish flag pattern. Strengthening is supported by a Stochastic golden cross and the MACD line's potential for a golden cross (histogram moving in a positive direction) along with increasing volume.

ADVICE: Hold or trading buy.

Entry Buy	Target Price	Support	Cut Loss
1,800 – 1,865	1,940 – 2,020	1,770 – 1,800	1,760

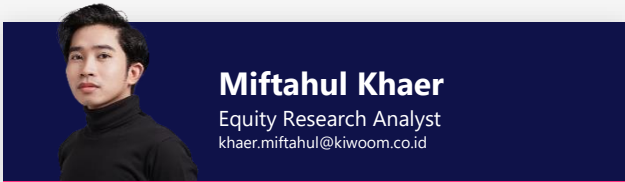


Forecast – Technical Analysis

Ticker	MA5	RSI Rec	MACD Trend	Recomm.	Pivot Point	Support 1	Support 2	Resistance 1	Resistance 2	Stop Loss Level
JCI	Positive	Overbought	Negative	Sell	8,700	8,650	8,625	8,725	8,775	8,500
AADI	Positive	Oversold	Negative	Spec. Buy	7,100	7,025	6,975	7,150	7,225	6,850
ACES	Positive	Oversold	Negative	Spec. Buy	411	406	403	414	419	397
ADMIR	Positive	Trading	Positive	Spec. Buy	1,415	1,370	1,335	1,450	1,495	1,315
ADRO	Positive	Trading	Negative	Hold	1,820	1,800	1,780	1,840	1,860	1,755
AKRA	Positive	Trading	Negative	Hold	1,245	1,230	1,220	1,255	1,270	1,200
AMMN	Negative	Trading	Positive	Hold	6,650	6,500	6,375	6,775	6,925	6,275
AMRT	Positive	Trading	Positive	Spec. Buy	1,910	1,900	1,890	1,920	1,930	1,860
ANTM	Negative	Trading	Positive	Hold	3,025	2,955	2,925	3,055	3,125	2,880
ASII	Positive	Trading	Negative	Hold	6,575	6,525	6,475	6,625	6,675	6,375
BBCA	Positive	Trading	Negative	Hold	8,025	7,950	7,875	8,100	8,175	7,775
BBNI	Negative	Trading	Positive	Hold	4,385	4,345	4,305	4,425	4,465	4,240
BBRI	Negative	Trading	Positive	Hold	3,725	3,670	3,625	3,770	3,825	3,570
BBTN	Negative	Trading	Positive	Hold	1,150	1,140	1,120	1,170	1,180	1,105
BMRI	Positive	Trading	Negative	Hold	5,000	4,975	4,935	5,050	5,075	4,860
BRPT	Positive	Trading	Positive	Spec. Buy	3,580	3,505	3,440	3,645	3,720	3,385
BUMI	Negative	Overbought	Positive	Sell	352	344	338	358	366	333
CPIN	Positive	Trading	Negative	Hold	4,550	4,525	4,510	4,565	4,590	4,440
CTRA	Negative	Trading	Positive	Hold	865	860	850	875	880	835
DSSA	Positive	Trading	Negative	Hold	106,700	105,425	104,225	107,900	109,175	102,650
EMTK	Positive	Trading	Positive	Spec. Buy	1,415	1,325	1,250	1,490	1,580	1,230
EXCL	Negative	Strong Sell	Positive	Sell	3,760	3,670	3,550	3,880	3,970	3,495
GOTO	Positive	Trading	Negative	Hold	67	66	64	69	70	63
HEAL	Positive	Oversold	Positive	Buy	1,405	1,400	1,395	1,410	1,415	1,375
ICBP	Negative	Trading	Positive	Hold	8,350	8,300	8,250	8,400	8,450	8,125
INCO	Positive	Trading	Positive	Spec. Buy	3,900	3,840	3,800	3,940	4,000	3,745
INDF	Positive	Oversold	Negative	Spec. Buy	6,800	6,750	6,700	6,850	6,900	6,600
INKP	Negative	Trading	Negative	Sell	8,050	7,925	7,800	8,175	8,300	7,675
ISAT	Negative	Overbought	Negative	Strong Sell	2,430	2,390	2,340	2,480	2,520	2,305
ITMG	Positive	Oversold	Negative	Spec. Buy	21,300	21,100	20,925	21,475	21,675	20,600
JPFA	Negative	Overbought	Positive	Sell	2,730	2,660	2,600	2,790	2,860	2,560
KLBF	Negative	Trading	Positive	Hold	1,215	1,205	1,190	1,230	1,240	1,170
MAPI	Positive	Trading	Negative	Hold	1,195	1,170	1,135	1,230	1,255	1,120
MBMA	Positive	Trading	Negative	Hold	535	525	520	540	550	510
MDKA	Negative	Trading	Positive	Hold	2,310	2,275	2,250	2,335	2,370	2,215
MEDC	Positive	Trading	Negative	Hold	1,280	1,240	1,215	1,305	1,345	1,195
NCKL	Positive	Trading	Positive	Spec. Buy	1,005	980	965	1,020	1,045	950
PGAS	Positive	Trading	Negative	Hold	1,845	1,805	1,770	1,880	1,920	1,740
PGEO	Positive	Trading	Positive	Spec. Buy	1,170	1,150	1,135	1,185	1,205	1,115
PTBA	Positive	Oversold	Negative	Spec. Buy	2,270	2,250	2,220	2,300	2,320	2,185
SCMA	Negative	Trading	Positive	Hold	429	410	391	448	467	385
SMGR	Positive	Trading	Negative	Hold	2,770	2,725	2,700	2,795	2,840	2,655
TLKM	Positive	Trading	Negative	Hold	3,530	3,470	3,430	3,570	3,630	3,380
TOWR	Negative	Trading	Positive	Hold	560	535	525	570	595	515
UNTR	Positive	Trading	Negative	Hold	28,075	27,925	27,725	28,275	28,425	27,300
UNVR	Positive	Trading	Negative	Hold	2,665	2,630	2,595	2,700	2,735	2,555



Kiwoom Research Team



HEAD OFFICE

Treasury Tower 27th Floor Unit A, District 8 Kawasan SCBD Lot 28,
Jl.Jend.Sudirman Kav 52-53, Jakarta Selatan 12190

Tel : (021) 5010 5800
Fax : (021) 5010 5820
Email : cs@kiwoom.co.id

PT Kiwoom Sekuritas Indonesia is licensed and supervised by the Financial Services Authority (OJK)

OTHER DISCLOSURES

All Kiwoom's research reports made available to clients are simultaneously available on our own website <http://www.kiwoom.co.id/>. Not all research content is redistributed, e-mailed or made available to third-party aggregators. For all research reports available on a particular stock, please contact your sales representative. Any data discrepancies in this report could be the result of different calculations and/or adjustments.

DISCLAIMER

This report has been prepared and issued by PT Kiwoom Sekuritas Indonesia. Information has been obtained from sources believed to be reliable but Kiwoom Securities do not warrant its completeness or accuracy. Forward-looking information or statements in this report contain information that is based on forecast of future results, estimates of amounts not yet determinable, assumptions, and therefore involve known and unknown risks and uncertainties which may cause the actual results, performance or achievements of their subject matter to be materially different from current expectations. To the fullest extent allowed by law, PT Kiwoom Sekuritas Indonesia shall not be liable for any direct, indirect or consequential losses, loss of profits, damages, costs or expenses incurred or suffered by any person or organization arising from reliance on or use of any information contained on this report. The information that we provide should not be construed in any manner whatsoever as, personalized advice. No mention of a particular security in this report constitutes a recommendation to buy, sell or hold that or any security, or that any particular security, portfolio of securities, transaction or investment strategy is suitable for any specific person. This report is being supplied to you solely for your information and may not be reproduced by, further distributed to or published in whole or in part by, any other person.