



Technical Recommendation

Jakarta Composite Index Range Today

6,920 **7,000 / 7,100 / 7,270**
Support Resistance

Published on 08 April 2026



Jakarta Composite Index

JCI is still unable to close above the psychological level of 7,000 although the intraday High briefly touched 7,022, finally finishing at 6,971.03, eroded by 18.4 pts / -0.26%, weighed down by Foreign Net Sell of IDR 1.78T and most significantly dragged down by the Industrial sector -2.63%. RUPIAH exchange rate position is the worst since the 1998 monetary crisis, having touched 17,105/USD, thus contributing gloomy sentiment to market movements even though regional sentiment and global geopolitical tensions have eased slightly.

KIWOOM RESEARCH suggests waiting for the critical 7,000 area to be broken before considering a Speculative Buy, and only Average Up if the MA10 / 7,100 can be broken firmly.

ADVISE: WAIT & SEE, Average Up / Buy On Break >7,000.



AKRA

AKR Corporindo Tbk.



(AKRA). Price successfully rebound and potential to test the nearest resistance. Strengthening supported by Stochastic indicator golden cross, MACD line moving bullish (histogram moving positive) and volume increasing.

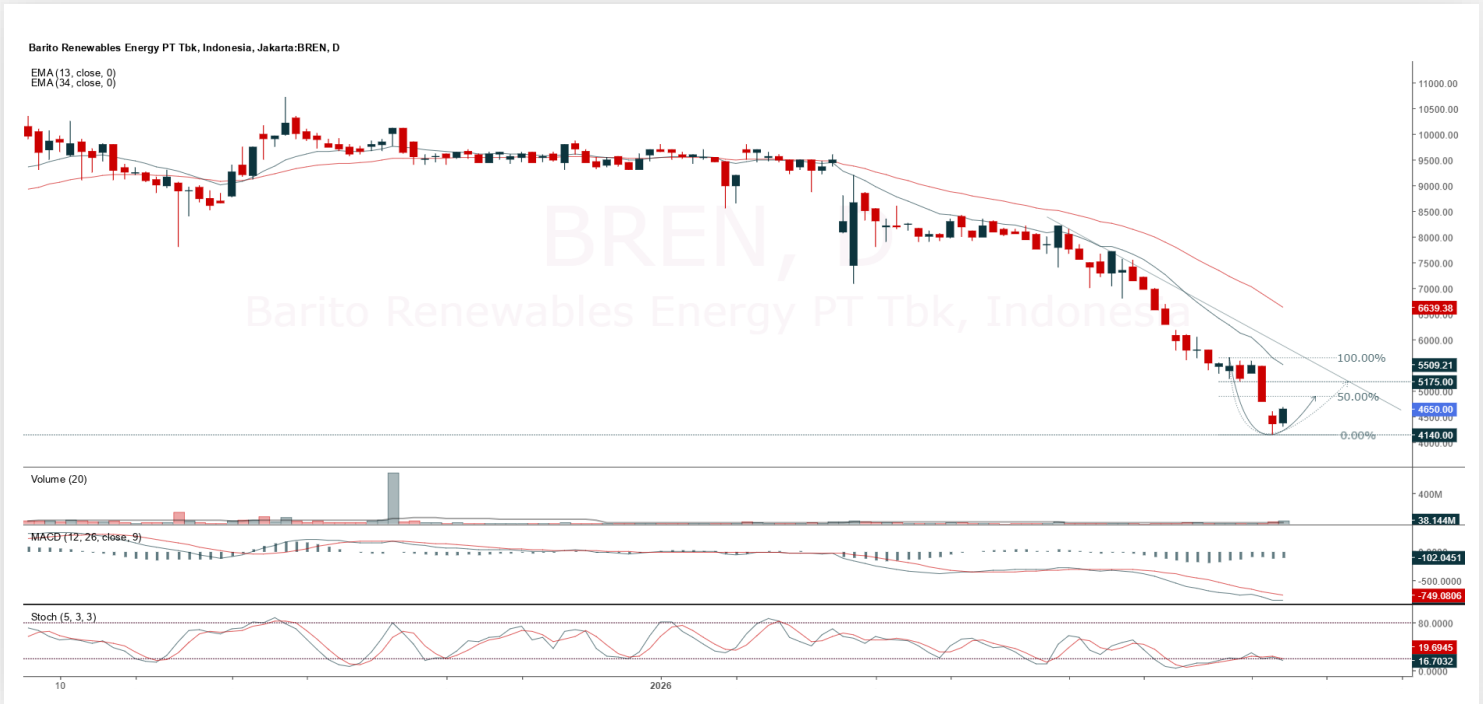
ADVICE: Hold or trading buy.

Entry Buy	Target Price	Support	Cut Loss
1,365 – 1,400	1,445 – 1,485	1,345 – 1,365	1,335



BREN

Barito Renewables Energy Tbk.



(BREN). Price successfully rebound after touching its medium-term support area. Strengthening supported by Stochastic indicator moving in the oversold area, MACD line still bearish crossover but downward momentum starting to weaken (histogram starting to move to positive direction) and increasing volume trend.

ADVICE: Accumulation buy or buy on weakness.

Entry Buy	Target Price	Support	Cut Loss
4,530 – 4,650	4,800 – 4,940	4,460 – 4,530	4,440



INCO

Vale Indonesia Tbk.



(INCO). Price successfully closed positive and potential to continue rally. Strengthening supported by Stochastic indicator still moving bullish, MACD line potential golden cross (histogram moving to positive direction) and volume increasing.

ADVICE: Hold or trading buy.

Entry Buy	Target Price	Support	Cut Loss
5,575 – 5,725	5,900 – 6,075	5,500 – 5,575	5,450



NCKL

Trimegah Bangun Persada Tbk.



(NCKL). Price successfully rebound and back to swing low. Strengthening supported by Stochastic indicator potential to move bullish again (bullish convergence), MACD line potential golden cross (histogram moving to positive direction) and volume slightly increasing.

ADVICE: Accumulation buy or trading buy.

Entry Buy	Target Price	Support	Cut Loss
1,095 – 1,125	1,160 – 1,195	1,080 – 1,095	1,070



Forecast – Technical Analysis

Ticker	MA5	RSI Rec	MACD Trend	Recomm.	Pivot Point	Support 1	Support 2	Resistance 1	Resistance 2	Stop Loss Level
JCI	Positive	Oversold	Positive	Buy	6,975	6,950	6,900	7,025	7,075	6,800
AADI	Positive	Trading	Negative	Hold	10,750	10,500	10,225	11,025	11,275	10,075
ADMR	Positive	Oversold	Negative	Spec. Buy	1,770	1,710	1,650	1,830	1,890	1,625
ADRO	Positive	Trading	Negative	Hold	2,470	2,385	2,320	2,535	2,620	2,285
AKRA	Positive	Trading	Positive	Spec. Buy	1,370	1,330	1,290	1,410	1,450	1,270
AMMN	Negative	Oversold	Positive	Spec. Buy	4,920	4,840	4,750	5,000	5,100	4,680
AMRT	Negative	Oversold	Positive	Spec. Buy	1,430	1,405	1,375	1,460	1,485	1,355
ANTM	Negative	Oversold	Negative	Spec. Buy	3,545	3,455	3,365	3,635	3,725	3,310
ASII	Positive	Trading	Positive	Spec. Buy	5,975	5,900	5,775	6,100	6,175	5,700
BBCA	Negative	Oversold	Negative	Spec. Buy	6,500	6,475	6,425	6,550	6,575	6,325
BBNI	Positive	Strong Buy	Negative	Buy	3,580	3,500	3,430	3,650	3,730	3,380
BBRI	Positive	Oversold	Negative	Spec. Buy	3,270	3,220	3,170	3,320	3,370	3,120
BBTN	Positive	Trading	Negative	Hold	1,260	1,255	1,240	1,275	1,280	1,220
BMRI	Positive	Oversold	Negative	Spec. Buy	4,555	4,500	4,445	4,610	4,665	4,380
BREN	Positive	Oversold	Negative	Spec. Buy	4,495	4,310	4,105	4,700	4,885	4,045
BRPT	Negative	Trading	Positive	Hold	1,395	1,330	1,255	1,470	1,535	1,235
BUMI	Negative	Trading	Positive	Hold	240	233	228	245	252	224
CPIN	Negative	Trading	Positive	Hold	4,160	4,090	4,000	4,250	4,320	3,940
CTRA	Negative	Oversold	Positive	Spec. Buy	695	690	675	710	715	665
DSSA	Positive	Oversold	Positive	Buy	65,200	62,425	60,000	67,625	70,400	59,100
EMTK	Positive	Oversold	Positive	Buy	730	715	695	750	765	685
EXCL	Negative	Trading	Positive	Hold	2,875	2,825	2,785	2,915	2,965	2,740
GOTO	Positive	Oversold	Positive	Buy	52	51	51	52	53	50
HEAL	Positive	Oversold	Negative	Spec. Buy	1,205	1,195	1,165	1,235	1,245	1,150
ICBP	Negative	Trading	Positive	Hold	7,375	7,325	7,250	7,450	7,500	7,125
INCO	Negative	Trading	Negative	Sell	5,700	5,550	5,325	5,925	6,075	5,250
INDF	Negative	Trading	Positive	Hold	6,600	6,525	6,475	6,650	6,725	6,375
INKP	Positive	Trading	Positive	Spec. Buy	9,800	9,675	9,625	9,850	9,975	9,475
ISAT	Positive	Trading	Negative	Hold	2,060	2,020	1,970	2,110	2,150	1,940
ITMG	Positive	Trading	Negative	Hold	26,850	26,400	25,700	27,550	28,000	25,325
JPFA	Positive	Trading	Positive	Spec. Buy	2,440	2,415	2,370	2,485	2,510	2,330
KLBF	Negative	Oversold	Positive	Spec. Buy	955	945	930	970	980	915
MAPI	Negative	Trading	Positive	Hold	1,265	1,245	1,215	1,295	1,315	1,195
MBMA	Negative	Trading	Negative	Sell	705	685	670	720	740	655
MDKA	Negative	Trading	Negative	Sell	3,220	3,140	3,080	3,280	3,360	3,035
MEDC	Positive	Trading	Negative	Hold	1,625	1,585	1,565	1,645	1,685	1,540
NCKL	Negative	Trading	Negative	Sell	1,115	1,100	1,065	1,150	1,165	1,050
PGAS	Positive	Oversold	Negative	Spec. Buy	1,785	1,745	1,715	1,815	1,855	1,690
PGEO	Negative	Trading	Positive	Hold	1,010	1,005	990	1,025	1,030	975
PTBA	Positive	Trading	Negative	Hold	2,955	2,895	2,815	3,035	3,095	2,770
SCMA	Negative	Trading	Positive	Hold	259	256	253	262	265	249
SMGR	Positive	Oversold	Negative	Spec. Buy	2,400	2,355	2,320	2,435	2,480	2,285
TLKM	Negative	Trading	Positive	Hold	3,120	3,075	3,020	3,175	3,220	2,970
TOWR	Negative	Trading	Positive	Hold	490	484	480	494	500	473
UNTR	Positive	Trading	Negative	Hold	30,275	29,825	29,300	30,800	31,250	28,850
UNVR	Negative	Trading	Positive	Hold	1,910	1,895	1,880	1,925	1,940	1,850



Kiwoom Research Team



HEAD OFFICE

Treasury Tower 27th Floor Unit A, District 8 Kawasan SCBD Lot 28,
Jl.Jend.Sudirman Kav 52-53, Jakarta Selatan 12190

Tel : (021) 5010 5800
Fax : (021) 5010 5820
Email : cs@kiwoom.co.id

PT Kiwoom Sekuritas Indonesia is licensed and supervised by the Financial Services Authority (OJK)

OTHER DISCLOSURES

All Kiwoom's research reports made available to clients are simultaneously available on our own website <http://www.kiwoom.co.id/>. Not all research content is redistributed, e-mailed or made available to third-party aggregators. For all research reports available on a particular stock, please contact your sales representative. Any data discrepancies in this report could be the result of different calculations and/or adjustments.

DISCLAIMER

This report has been prepared and issued by PT Kiwoom Sekuritas Indonesia. Information has been obtained from sources believed to be reliable but Kiwoom Securities do not warrant its completeness or accuracy. Forward-looking information or statements in this report contain information that is based on forecast of future results, estimates of amounts not yet determinable, assumptions, and therefore involve known and unknown risks and uncertainties which may cause the actual results, performance or achievements of their subject matter to be materially different from current expectations. To the fullest extent allowed by law, PT Kiwoom Sekuritas Indonesia shall not be liable for any direct, indirect or consequential losses, loss of profits, damages, costs or expenses incurred or suffered by any person or organization arising from reliance on or use of any information contained on this report. The information that we provide should not be construed in any manner whatsoever as, personalized advice. No mention of a particular security in this report constitutes a recommendation to buy, sell or hold that or any security, or that any particular security, portfolio of securities, transaction or investment strategy is suitable for any specific person. This report is being supplied to you solely for your information and may not be reproduced by, further distributed to or published in whole or in part by, any other person.