



ARCI

Archi Indonesia Tbk.



(ARCI). Price successfully breakout sideways area and potential to continue uptrend. Strengthening supported by Stochastic indicator golden cross, MACD line moving bullish (histogram moving positive) and increasing volume trend.

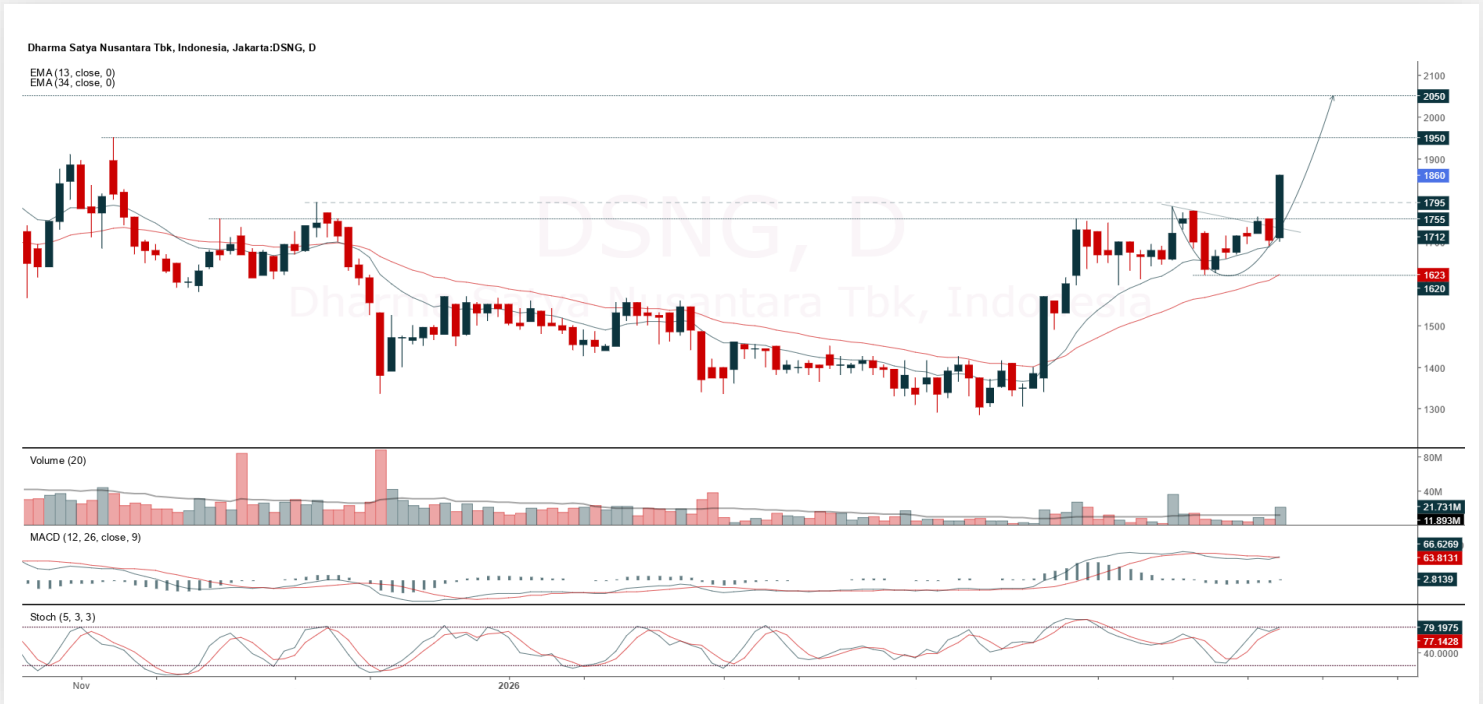
ADVICE: Averaging up or trading buy.

Entry Buy	Target Price	Support	Cut Loss
1,635 – 1,680	1,735 – 1,790	1,610 – 1,635	1,600



DSNG

Dharma Satya Nusantara Tbk.



(DSNG). Price increases significantly and potential to continue toward the next resistance. Strengthening supported by Stochastic indicator moving bullish, MACD line golden cross (histogram moving positive again) and volume increasing.

ADVICE: Averaging up or buy on support.

Entry Buy	Target Price	Support	Cut Loss
1,795 – 1,860	1,935 – 2,010	1,765 – 1,795	1,755



ERAA

Erajaya Swasembada Tbk.



(ERAA). Price returns to swing low and continues uptrend. Strengthening supported by Stochastic indicator golden cross, MACD line moving bullish (histogram moving positive) and increasing volume trend.

ADVICE: Averaging up or trading buy.

Entry Buy	Target Price	Support	Cut Loss
404 – 414	428 – 440	398 – 404	394



MAPI

Mitra Adiperkasa Tbk.



(MAPI). Price is testing the nearest resistance and potential to continue uptrend. Strengthening supported by Stochastic indicator tending bullish, MACD line moving bullish (histogram moving positive) and volume is strong enough.

ADVICE: Hold or trading buy.

Entry Buy	Target Price	Support	Cut Loss
1,300 – 1,330	1,370 – 1,410	1,280 – 1,300	1,270



Forecast – Technical Analysis

Ticker	MA5	RSI Rec	MACD Trend	Recomm.	Pivot Point	Support 1	Support 2	Resistance 1	Resistance 2	Stop Loss Level
JCI	Positive	Oversold	Negative	Spec. Buy	7,150	7,075	7,025	7,200	7,275	6,925
AADI	Positive	Trading	Negative	Hold	11,025	10,800	10,575	11,250	11,475	10,400
ADMR	Positive	Trading	Positive	Spec. Buy	1,900	1,880	1,865	1,915	1,935	1,835
ADRO	Positive	Trading	Negative	Hold	2,520	2,505	2,490	2,535	2,550	2,450
AKRA	Negative	Overbought	Positive	Sell	1,515	1,450	1,375	1,590	1,655	1,355
AMMN	Positive	Trading	Positive	Spec. Buy	5,250	5,000	4,775	5,475	5,725	4,705
AMRT	Positive	Oversold	Negative	Spec. Buy	1,415	1,385	1,370	1,430	1,460	1,345
ANTM	Negative	Trading	Positive	Hold	4,115	4,050	3,995	4,170	4,235	3,935
ASII	Positive	Trading	Positive	Spec. Buy	6,250	6,125	6,000	6,375	6,500	5,900
BBCA	Positive	Oversold	Negative	Spec. Buy	6,000	5,950	5,900	6,050	6,100	5,800
BBNI	Negative	Trading	Positive	Hold	3,760	3,715	3,680	3,795	3,840	3,620
BBRI	Positive	Oversold	Negative	Spec. Buy	3,065	3,030	3,015	3,080	3,115	2,970
BBTN	Negative	Trading	Positive	Hold	1,385	1,365	1,335	1,415	1,435	1,315
BMRI	Positive	Oversold	Negative	Spec. Buy	4,445	4,375	4,295	4,525	4,595	4,230
BREN	Positive	Oversold	Negative	Spec. Buy	4,695	4,535	4,475	4,755	4,915	4,405
BRPT	Positive	Trading	Positive	Spec. Buy	2,050	1,940	1,875	2,115	2,225	1,845
BUMI	Positive	Trading	Negative	Hold	223	216	211	228	235	208
CPIN	Positive	Trading	Negative	Hold	4,100	4,045	3,980	4,165	4,220	3,920
CTRA	Positive	Trading	Negative	Hold	700	690	685	705	715	670
DSSA	Positive	Oversold	Negative	Spec. Buy	1,955	1,800	1,685	2,070	2,225	1,660
EMTK	Positive	Trading	Negative	Hold	850	815	800	865	900	785
EXCL	Positive	Trading	Positive	Spec. Buy	3,110	3,065	3,030	3,145	3,190	2,980
GOTO	Negative	Trading	Positive	Hold	53	52	51	54	55	50
HEAL	Negative	Trading	Positive	Hold	1,205	1,155	1,115	1,245	1,295	1,095
ICBP	Positive	Oversold	Negative	Spec. Buy	6,850	6,775	6,675	6,950	7,025	6,575
INCO	Negative	Trading	Positive	Hold	6,950	6,675	6,550	7,075	7,350	6,450
INDF	Negative	Overbought	Positive	Sell	6,900	6,850	6,800	6,950	7,000	6,675
INKP	Positive	Trading	Negative	Hold	9,850	9,775	9,675	9,950	10,025	9,525
ISAT	Positive	Trading	Negative	Hold	1,985	1,955	1,910	2,030	2,060	1,885
ITMG	Negative	Trading	Negative	Sell	25,950	25,375	24,775	26,550	27,125	24,400
JPFA	Positive	Trading	Negative	Hold	2,575	2,515	2,445	2,645	2,705	2,405
KLBF	Positive	Oversold	Negative	Spec. Buy	875	860	840	895	910	830
MAPI	Negative	Trading	Positive	Hold	1,310	1,275	1,245	1,340	1,375	1,225
MBMA	Positive	Trading	Negative	Hold	675	665	645	695	705	635
MDKA	Negative	Trading	Positive	Hold	3,430	3,380	3,330	3,480	3,530	3,280
MEDC	Negative	Trading	Positive	Hold	1,725	1,695	1,645	1,775	1,805	1,620
NCKL	Positive	Trading	Positive	Spec. Buy	1,135	1,110	1,095	1,150	1,175	1,075
PGAS	Negative	Trading	Positive	Hold	1,915	1,880	1,840	1,955	1,990	1,815
PGEO	Positive	Trading	Negative	Hold	1,010	990	975	1,025	1,045	960
PTBA	Negative	Trading	Negative	Sell	2,900	2,870	2,830	2,940	2,970	2,790
SCMA	Positive	Trading	Negative	Hold	260	253	250	263	270	246
SMGR	Positive	Oversold	Negative	Spec. Buy	2,100	2,050	2,010	2,140	2,190	1,980
TLKM	Positive	Oversold	Negative	Spec. Buy	2,835	2,820	2,795	2,860	2,875	2,755
TOWR	Positive	Trading	Negative	Hold	485	479	475	489	495	467
UNTR	Negative	Trading	Negative	Sell	30,925	30,450	29,700	31,675	32,150	29,250
UNVR	Positive	Oversold	Negative	Spec. Buy	1,545	1,515	1,480	1,580	1,610	1,460



Kiwoom Research Team



Liza Camelia Suryanata
Head of Equity Research
liza.camelia@kiwoom.co.id



Sukarno Alatas
Senior Equity Research Analyst
sukarno@kiwoom.co.id



Abdul Azis Setyo W.
Equity Research Analyst
azis@kiwoom.co.id



Wahyu Saputra
Equity Research Associate
wahyu.saputra@kiwoom.co.id



HEAD OFFICE

Treasury Tower 27th Floor Unit A, District 8 Kawasan SCBD Lot 28,
Jl.Jend.Sudirman Kav 52-53, Jakarta Selatan 12190

Tel : (021) 5010 5800
Fax : (021) 5010 5820
Email : cs@kiwoom.co.id

PT Kiwoom Sekuritas Indonesia is licensed and supervised by the Financial Services Authority (OJK)

OTHER DISCLOSURES

All Kiwoom's research reports made available to clients are simultaneously available on our own website <http://www.kiwoom.co.id/>. Not all research content is redistributed, e-mailed or made available to third-party aggregators. For all research reports available on a particular stock, please contact your sales representative. Any data discrepancies in this report could be the result of different calculations and/or adjustments.

DISCLAIMER

This report has been prepared and issued by PT Kiwoom Sekuritas Indonesia. Information has been obtained from sources believed to be reliable but Kiwoom Securities do not warrant its completeness or accuracy. Forward-looking information or statements in this report contain information that is based on forecast of future results, estimates of amounts not yet determinable, assumptions, and therefore involve known and unknown risks and uncertainties which may cause the actual results, performance or achievements of their subject matter to be materially different from current expectations. To the fullest extent allowed by law, PT Kiwoom Sekuritas Indonesia shall not be liable for any direct, indirect or consequential losses, loss of profits, damages, costs or expenses incurred or suffered by any person or organization arising from reliance on or use of any information contained on this report. The information that we provide should not be construed in any manner whatsoever as, personalized advice. No mention of a particular security in this report constitutes a recommendation to buy, sell or hold that or any security, or that any particular security, portfolio of securities, transaction or investment strategy is suitable for any specific person. This report is being supplied to you solely for your information and may not be reproduced by, further distributed to or published in whole or in part by, any other person.