



Jakarta Composite Index Range Today

**6,300 – 6,148 / 5,949**

Support

**6,600 – 6,700 / 7,000**

Resistance

Published on 20 May 2026



## **Jakarta Composite Index**

JCI weakened sharply and closed at the 6,370.68 level (-3.46%), continuing its selling pressure and extending its movement in a bearish trend. Technically, JCI is still moving within a bearish channel and is trading below EMA10, EMA20, and EMA50, which indicates that the downward trend remains dominant in the short to medium term. The RSI (14) indicator is around 22.8 or has entered the oversold area, reflecting very strong selling pressure but at the same time opening up an opportunity for a short-term technical rebound.

From the price movement pattern, JCI is currently testing the lower support area of the bearish channel with a potential rebound toward the nearest resistance in the 6,812 – 6,900 area. However, the upside room remains limited as long as JCI is unable to break back above the psychological resistance area of 7,000 and exit the bearish channel pattern. On the other hand, there is potential for testing further support toward the gap area of 5,949 – 6,148 if the selling pressure continues.

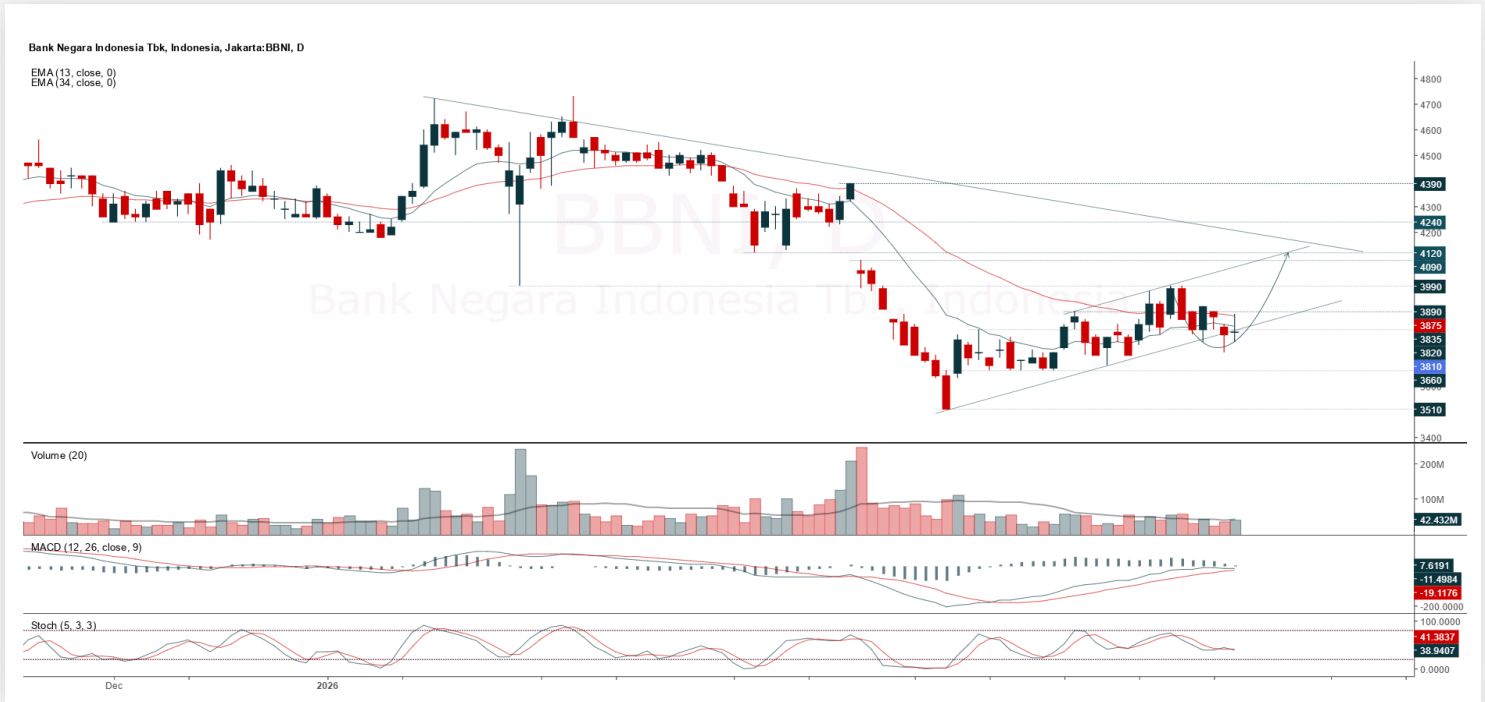
**KIWOOM RESEARCH** expects JCI to still move volatile with a bearish bias, with the support area in the range of 6,300 – 6,148 / 5,949, while the nearest resistance is in the area of 6,600 – 6,700 / 7,000.

**ADVISE:** HOLD; WAIT & SEE.



## BBNI

Bank Negara Indonesia (Persero) Tbk.



**(BBNI).** Price holds and tries to test the nearest resistance. The opportunity to strengthen is supported by the MACD line still moving bullish with the histogram moving positive and transaction volume increasing.

**ADVICE:** Accumulation buy or buy on support.

Entry Buy	Target Price	Support	Cut Loss
3,710 – 3,810	3,930 – 4,040	3,660 – 3,710	3,640



## BRIS

Bank Syariah Indonesia (Persero) Tbk.



**(BRIS).** Price successfully rebounded or formed a false breakdown support. The opportunity to strengthen is supported by the Stochastic potential golden cross, MACD line potential golden cross with the histogram moving to the positive direction and transaction volume increasing.

**ADVICE:** Accumulation buy or buy on support.

Entry Buy	Target Price	Support	Cut Loss
1,725 – 1,770	1,825 – 1,880	1,700 – 1,725	1,690



## MIKA

Mitra Keluarga Karyasehat Tbk.



**(MIKA).** Price is still moving in a downtrend and is currently testing the nearest support area at the 1,710 level. An opportunity for a technical rebound is open if the price can hold above that area. However, if the support fails to be maintained, the price has the potential to continue its weakening toward the target at 1,570 before a technical rebound opportunity appears. On the other hand, trading volume that is starting to increase indicates gradual accumulation in the lower area.

**ADVICE:** Accumulation buy or buy on weakness.

Entry Buy	Target Price	Support	Cut Loss
1,665 – 1,710	1,765 – 1,815	1,640 – 1,665	1,630



## MYOR

Mayora Indah Tbk.



**(MYOR).** Price strengthens again and is testing the nearest resistance. The opportunity to strengthen is supported by a Stochastic golden cross and the MACD line moving bullish with the histogram moving positive.

**ADVICE:** Accumulation buy or buy on support.

Entry Buy	Target Price	Support	Cut Loss
1,770 – 1,815	1,870 – 1,925	1,745 – 1,770	1,735

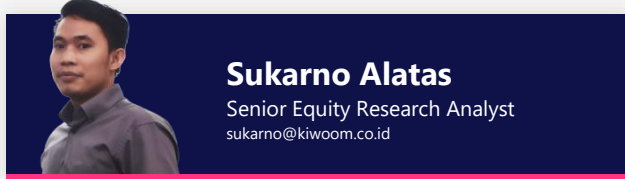


## Forecast – Technical Analysis

Ticker	MA5	RSI Rec	MACD Trend	Recomm.	Pivot Point	Support 1	Support 2	Resistance 1	Resistance 2	Stop Loss Level
JCI	Positive	Oversold	Negative	Spec. Buy	6,475	6,325	6,175	6,650	6,800	6,075
AADI	Positive	Oversold	Negative	Spec. Buy	8,525	7,950	7,250	9,225	9,800	7,125
ADMR	Positive	Oversold	Negative	Spec. Buy	1,590	1,485	1,340	1,735	1,840	1,320
ADRO	Positive	Oversold	Negative	Spec. Buy	2,385	2,300	2,195	2,490	2,575	2,160
AKRA	Positive	Trading	Negative	Hold	1,425	1,375	1,310	1,490	1,540	1,290
AMMN	Positive	Oversold	Negative	Spec. Buy	3,215	3,045	2,805	3,455	3,625	2,760
AMRT	Positive	Trading	Positive	Spec. Buy	1,430	1,380	1,330	1,480	1,530	1,310
ANTM	Positive	Oversold	Negative	Spec. Buy	3,110	2,990	2,800	3,300	3,420	2,760
ASII	Negative	Trading	Negative	Sell	5,975	5,925	5,850	6,050	6,100	5,775
BBCA	Positive	Oversold	Positive	Buy	6,050	5,875	5,800	6,125	6,300	5,700
BBNI	Positive	Trading	Positive	Spec. Buy	3,820	3,755	3,710	3,865	3,930	3,650
BBRI	Positive	Oversold	Positive	Buy	3,070	3,000	2,970	3,100	3,170	2,925
BBTN	Positive	Trading	Negative	Hold	1,280	1,255	1,235	1,300	1,325	1,215
BMRI	Positive	Oversold	Negative	Spec. Buy	4,155	4,050	3,995	4,210	4,315	3,935
BRPT	Positive	Trading	Negative	Hold	2,000	1,855	1,700	2,155	2,300	1,675
BUMI	Positive	Oversold	Negative	Spec. Buy	196	180	162	214	230	160
CPIN	Negative	Trading	Negative	Sell	4,130	4,060	3,990	4,200	4,270	3,930
CUAN	Positive	Oversold	Negative	Spec. Buy	710	645	575	780	845	565
DEWA	Positive	Oversold	Negative	Spec. Buy	415	380	339	456	491	334
EMTK	Positive	Oversold	Negative	Spec. Buy	715	670	650	735	780	640
ESSA	Positive	Oversold	Negative	Spec. Buy	740	705	655	790	825	645
EXCL	Positive	Trading	Negative	Hold	2,935	2,830	2,705	3,060	3,165	2,665
GOTO	Negative	Oversold	Negative	Spec. Buy	50	50	50	50	50	49
HRTA	Positive	Oversold	Negative	Spec. Buy	2,260	2,150	2,010	2,400	2,510	1,980
ICBP	Positive	Oversold	Positive	Buy	6,775	6,700	6,625	6,850	6,925	6,525
INCO	Negative	Oversold	Negative	Spec. Buy	5,075	4,760	4,300	5,550	5,850	4,235
INDF	Positive	Trading	Negative	Hold	6,700	6,625	6,550	6,775	6,850	6,450
INKP	Positive	Oversold	Negative	Spec. Buy	8,400	8,175	7,825	8,750	8,975	7,700
ISAT	Negative	Trading	Positive	Hold	2,270	2,155	2,070	2,355	2,470	2,035
ITMG	Positive	Oversold	Negative	Spec. Buy	24,050	23,075	22,025	25,100	26,075	21,675
JPFA	Positive	Trading	Negative	Hold	2,520	2,470	2,420	2,570	2,620	2,385
KLBF	Positive	Oversold	Negative	Spec. Buy	835	825	810	850	860	800
MAPI	Negative	Overbought	Positive	Sell	1,485	1,470	1,455	1,500	1,515	1,435
MBMA	Positive	Oversold	Negative	Spec. Buy	510	470	424	555	595	418
MDKA	Positive	Oversold	Negative	Spec. Buy	2,575	2,370	2,135	2,810	3,015	2,105
MEDC	Positive	Oversold	Negative	Spec. Buy	1,535	1,460	1,385	1,610	1,685	1,365
PGAS	Positive	Oversold	Negative	Spec. Buy	1,830	1,795	1,725	1,900	1,935	1,700
PGEO	Negative	Trading	Negative	Sell	995	980	955	1,020	1,035	940
PTBA	Positive	Oversold	Negative	Spec. Buy	2,755	2,635	2,525	2,865	2,985	2,485
SCMA	Positive	Oversold	Negative	Spec. Buy	242	229	218	253	266	214
SMGR	Positive	Oversold	Negative	Spec. Buy	1,965	1,900	1,840	2,025	2,090	1,810
TLKM	Negative	Trading	Positive	Hold	3,080	3,030	2,980	3,130	3,180	2,935
TOWR	Positive	Oversold	Negative	Spec. Buy	438	427	416	449	460	409
UNTR	Positive	Oversold	Negative	Spec. Buy	26,050	25,425	24,800	26,675	27,300	24,425
UNVR	Positive	Trading	Positive	Spec. Buy	1,755	1,735	1,700	1,790	1,810	1,675
WIFI	Positive	Oversold	Negative	Spec. Buy	2,085	2,005	1,915	2,175	2,255	1,885



## Kiwoom Research Team



### HEAD OFFICE

Treasury Tower 27th Floor Unit A, District 8 Kawasan SCBD Lot 28,  
Jl.Jend.Sudirman Kav 52-53, Jakarta Selatan 12190

Tel : (021) 5010 5800  
Fax : (021) 5010 5820  
Email : [cs@kiwoom.co.id](mailto:cs@kiwoom.co.id)

PT Kiwoom Sekuritas Indonesia is licensed and supervised by the Financial Services Authority (OJK)

### OTHER DISCLOSURES

All Kiwoom's research reports made available to clients are simultaneously available on our own website <http://www.kiwoom.co.id/>. Not all research content is redistributed, e-mailed or made available to third-party aggregators. For all research reports available on a particular stock, please contact your sales representative. Any data discrepancies in this report could be the result of different calculations and/or adjustments.

### DISCLAIMER

This report has been prepared and issued by PT Kiwoom Sekuritas Indonesia. Information has been obtained from sources believed to be reliable but Kiwoom Securities do not warrant its completeness or accuracy. Forward-looking information or statements in this report contain information that is based on forecast of future results, estimates of amounts not yet determinable, assumptions, and therefore involve known and unknown risks and uncertainties which may cause the actual results, performance or achievements of their subject matter to be materially different from current expectations. To the fullest extent allowed by law, PT Kiwoom Sekuritas Indonesia shall not be liable for any direct, indirect or consequential losses, loss of profits, damages, costs or expenses incurred or suffered by any person or organization arising from reliance on or use of any information contained on this report. The information that we provide should not be construed in any manner whatsoever as, personalized advice. No mention of a particular security in this report constitutes a recommendation to buy, sell or hold that or any security, or that any particular security, portfolio of securities, transaction or investment strategy is suitable for any specific person. This report is being supplied to you solely for your information and may not be reproduced by, further distributed to or published in whole or in part by, any other person.